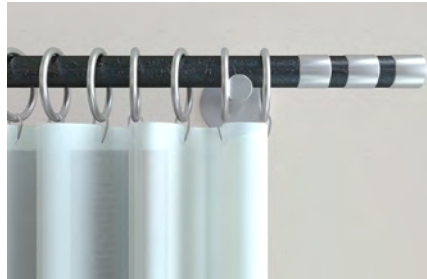


# Metal cavity fixing HM

The versatile metal cavity fixing with metric screws.



Curtain rails



Shelves

7

## Applications

- Pictures
- Lighting
- Light shelves
- Towel rails
- Mirror cabinets
- Curtain rails
- Sub-structures

## Advantages

- Due to the extensive range, the HM is suitable for board building materials with a thickness of 3-50 mm and thus suitable for a number of different applications.
- The metric internal thread allows the attachment to be removed and refitted several times, thus offering the best possible flexibility.

- The HM's expanding arms ensure a large supporting surface, thus allowing a high load-bearing capacity.
- The claws around the edge of the fixing penetrate the board building material, preventing the fixing from rotating, thus ensuring a secure installation.

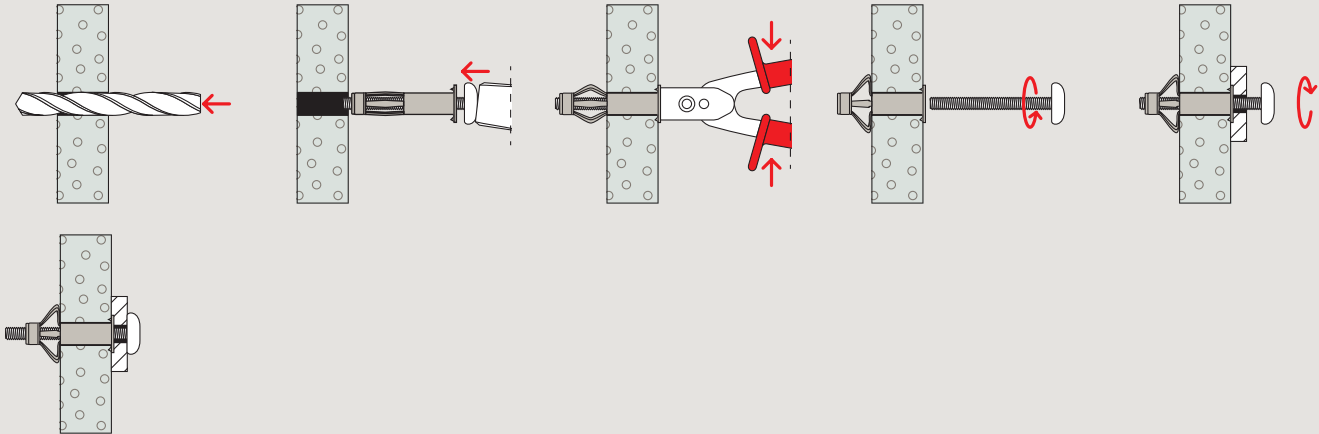
## Building materials

- Gypsum plasterboard and gypsum fibreboards
- Cavity floor slabs
- Light building boards made of wood wool
- Chipboard
- Plywood boards

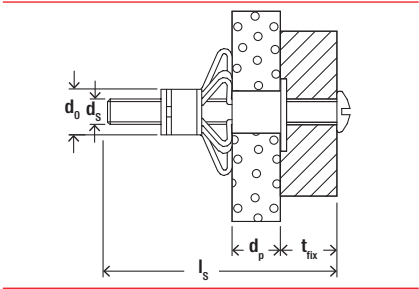
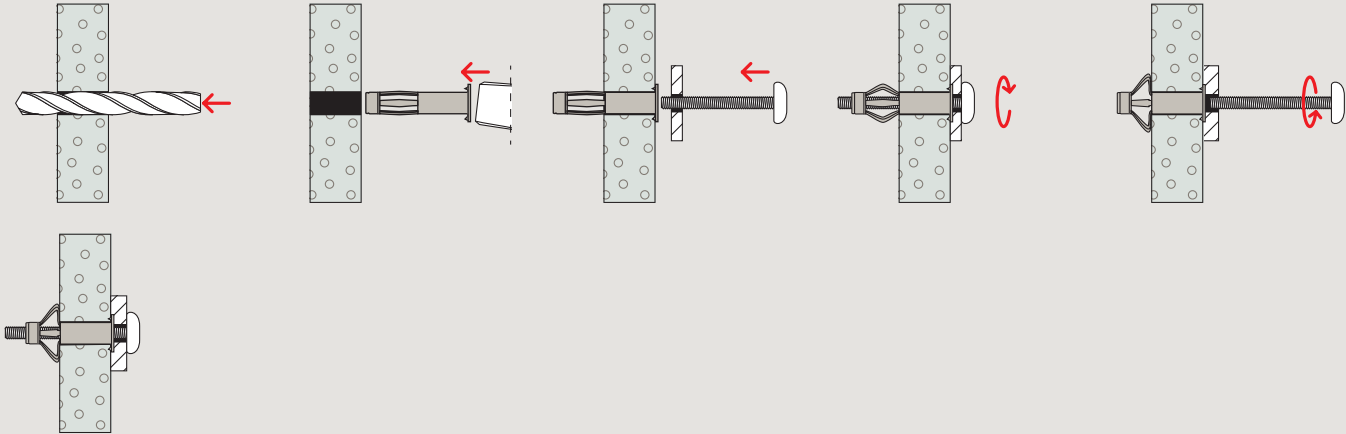
## Functioning

- The metal cavity fixing HM is suitable for pre-positioned installation.
- The fixing should be selected based on the thickness of the board building material, to allow the very best expansion in the cavity.
- During installation, the expanding arms swing open and press onto the reverse side of the board.
- The HM can be installed using installation pliers. If using a battery operated screwdriver or screwdriver for installation, the pre-assembled screws must be removed first. When screwing in and expanding the fixing, the attachment, or a max. 6 mm plate, needs to be used as a turning stop.

Installation HM



Installation HM



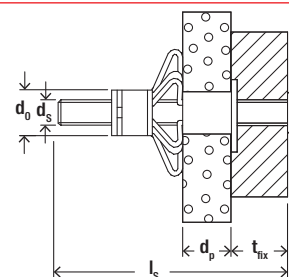
Technical data

Metal cavity fixing HM



		HM S		HM SS		HM H				
Item	Item no.	Drill diameter		Min. drill hole depth		Anchor length		Screw dimension		Sales unit
		d <sub>0</sub>	[mm]	h <sub>1</sub>	[mm]	l	[mm]	d <sub>s</sub> x l <sub>s</sub>	[mm]	
HM 4 x 32 S	519769	8		40		32		M4 x 40		50
HM 4 x 45 S	519770	8		52		45		M4 x 52		50
HM 4 x 60 S	519771	8		65		60		M4 x 65		50

<sup>1)</sup> with hexagon headed screw, assembly only by using the professional installation tool HM Z 1



## Technical data

### Metal cavity fixing HM



		Drill diameter	Min. drill hole depth	Anchor length	Screw dimension	Panel thickness	Fixture thickness	Drive	Sales unit
	Item no.	$d_0$ [mm]	$h_1$ [mm]	$l$ [mm]	$d_s \times l_s$ [mm]	$d_p$ [mm]	$t_{fix}$ [mm]		[pcs]
Item									
HM 5 x 37 S	519772	10	45	37	M5 x 45	6 - 15	$\leq 8 - 17$	PH2	50
HM 5 x 52 S	519774	10	58	52	M5 x 58	7 - 21	$\leq 10 - 24$	PH2	50
HM 5 x 65 S	519775	10	71	65	M5 x 71	20 - 34	$\leq 12 - 26$	PH2	50
HM 6 x 37 S	519777	12	45	37	M6 x 45	6 - 15	$\leq 12 - 21$	PH3	50
HM 6 x 52 S	519778	12	58	52	M6 x 58	7 - 21	$\leq 14 - 28$	PH3	50
HM 6 x 65 S	519782	12	71	65	M6 x 71	17 - 34	$\leq 13 - 30$	PH2	50
HM 6 x 80 S	519779	12	88	80	M6 x 88	32 - 50	$\leq 16 - 34$	PH3	50
HM 8 x 54 SS	519783 <sup>1)</sup>	12	60	54	M8 x 60	7 - 21	$\leq 16 - 30$	SW 13	50
HM 4 x 32 H	519780	8	45	32	–	3 - 13	–	–	50
HM 5 x 65 H	519781	10	71	65	–	20 - 34	–	–	50

<sup>1)</sup> with hexagon headed screw, assembly only by using the professional installation tool HM Z 1

## Technical data

### Installation pliers HMZ



		Adapted for	Sales unit
	Item no.		[pcs]
Item			
HM Z 1	062320	HM 4 - HM 8	1
HM Z 2	062321	HM 4 - HM 6	1
HM Z 3	539723	HM 4 - HM 6	1

## Loads

Metal cavity fixing HM											
Recommended loads <sup>1)</sup> for a single anchor.											
Type			HM 4 x 32 S	HM 4 x 46 S	HM 5 x 37 S	HM 5 x 52 S	HM 5 x 65 S	HM 6 x 37 S	HM 6 x 52 S	HM 6 x 65 S	HM 8 x 55 SS
Thread size			M4	M4	M5	M5	M5	M6	M6	M6	M8
Recommended loads in the respective base material F <sub>RC</sub> <sup>2)</sup>											
Gypsum plasterboard	9.5 mm	[kN]	0.15	0.15	0.15	0.15	-	0.15	-	-	-
Gypsum plasterboard	12.5 mm	[kN]	0.20	0.20	0.20	0.20	-	0.20	0.20	-	0.20
Gypsum plasterboard	19 mm (2 x 9.5 mm)	[kN]	-	-	-	0.25	-	-	0.25	0.25	0.25
Gypsum plasterboard	25 mm (2 x 12.5 mm)	[kN]	-	-	-	-	0.30	-	-	0.30	-
Chipboard	10 mm	[kN]	0.25	0.25	0.25	0.25	-	0.25	0.25	-	0.25
Chipboard	13 mm	[kN]	0.25	0.25	0.25	0.25	-	0.25	0.25	-	0.25
Chipboard	28 mm	[kN]	-	-	-	-	0.50	-	-	0.50	-
Plywood	4 mm	[kN]	0.10	-	-	-	-	-	-	-	-
Hardboard	3 mm	[kN]	0.10	-	-	-	-	-	-	-	-
Wood wool slab	16 mm	[kN]	-	0.05	-	0.05	-	-	0.05	-	0.05
Wood wool slab	25 mm	[kN]	-	-	-	-	0.05	-	-	0.05	-
Fibre cement board	8 mm	[kN]	0.25	0.25	0.25	0.25	-	0.25	-	-	-
Gypsum fibreboard	10 mm	[kN]	0.25	0.25	0.25	0.25	-	0.25	0.25	-	0.25
Gypsum fibreboard	15 mm	[kN]	-	0.25	0.25	0.25	-	0.25	0.25	-	0.25

<sup>1)</sup> Required safety factors are considered.<sup>2)</sup> Valid for tensile load, shear load and oblique load under any angle.