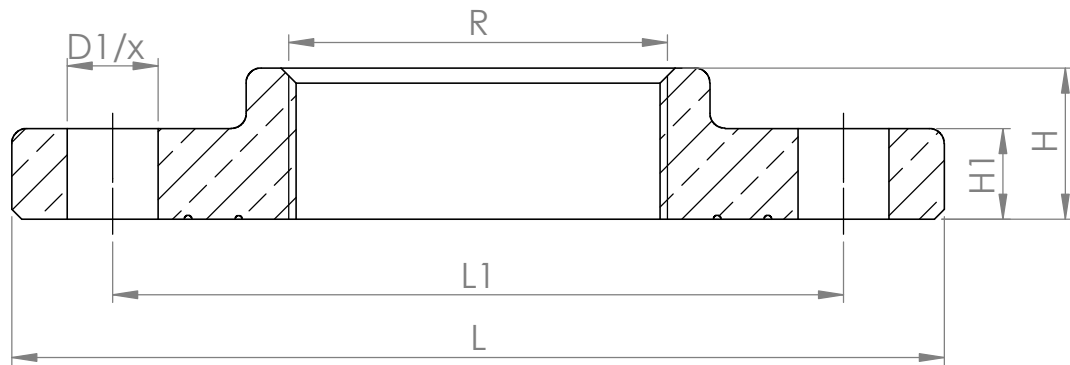
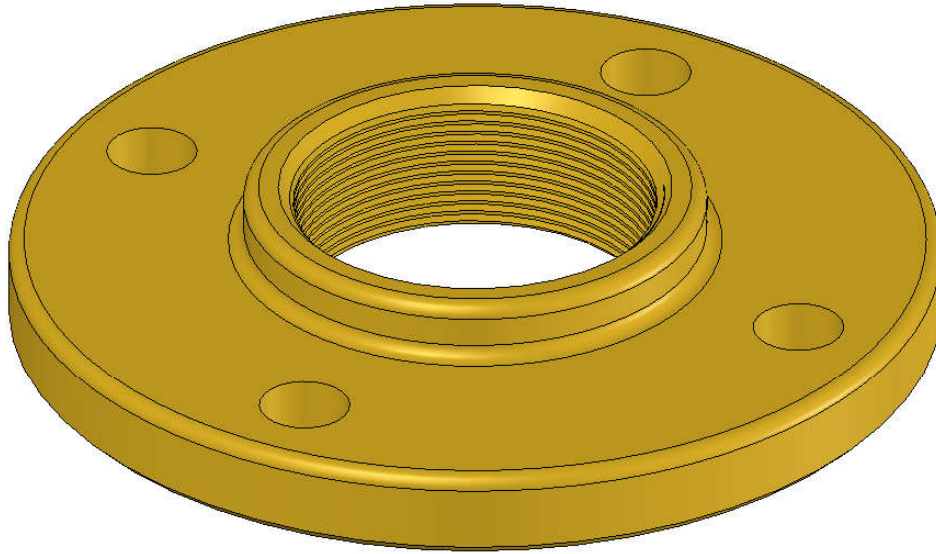


6200 Thread flange



Item No.	R	D1/x	L	L1	H	H1	Material	Weight (kg)
36200 15	1/2"	15/4	94	65	19	13	CC770S	0.750
36200 20	3/4"	15/4	104	75	18	13	CC770S	0.900
36200 25	1"	15/4	115	85	22	13	CC770S	1.090
36200 32	1 1/4"	18/4	140	100	20	13	CC770S	1.500
36200 40	1 1/2"	18/4	151	110	24	15	CC770S	2.040
36200 501	2"	18/4	165	125	25	12	CC770S	1.940
36200 65	2 1/2"	18/4	185	145	30	18	CC770S	3.560
36200 80	3"	18/4	200	160	30	20	CC770S	4.390
36200 90	4"	18/8	220	180	28	18	CC770S	4.230