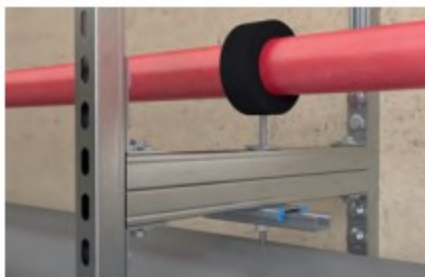


# Bracket PFAF

Construction elements - Brackets PFAF



Frame constructions



Leightweight installation on cantilever

## Applications

- Arrangement of simple channel constructions in the push-through system

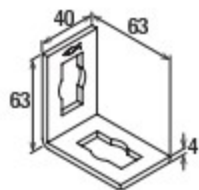
## Advantages/benefits

- The holes in the connecting elements make them compatible with the push-through connector PFCN.

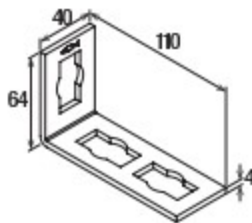
## Properties

- Material: steel DD11 (material no. 1.0332) acc. to DIN EN 10111
- Zinc plating: electro zinc-plated acc. to DIN 50979, min. 8 µm

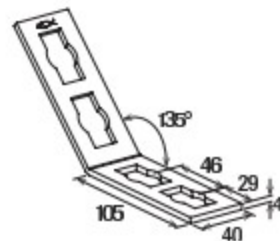
## Technical data



PFAF 2



PFAF 3



PFAF 4/135°

Item	Item No.	Sales unit
		[pcs]
PFAF 2	533735	25
PFAF 3	533736	25
PFAF 4/135°	533737	20