

Transshipment Crane Barge 6324

HARVEST DANUBE



GENERAL

Reference	522006
Delivery date	December 2017
Basic functions	Transshipment of bulk cargoes from river barges to bulk vessels
Classification	Lloyd's Register of Shipping: * 100 AT, Pontoon, *IWS
Descriptive note	Crane Pontoon, manned working up to 20 nm offshore, unmanned towing
Flag (at delivery)	St. Vincent and the Grenadines

DIMENSIONS

Length moulded	63,00 m
Beam moulded	23,50 m
Depth at sides	4,50 m
Draught scantling	3,50 m
Draught design	2,50 m
Deadweight max.	1.905 ton (excl. grabs)
Working deck	880 m ² (10 ton/m ²)

TANK CAPACITIES

Fuel oil	238 m ³
Fresh water	87 m ³
Sewage & Grey water	80 m ³
Lub. oil	5 m ³
Dirty oil / Sludge	10 m ³
Bilge water	5 m ³
Water ballast	1.756 m ³

CRANE PERFORMANCE

Make and type	Liebherr CBG 350
Operation	Prepared for Grab, Containers or hook
SWL sheltered water	45 ton @ 12-36 m (excl. attachments)
SWL open sea operation	35 ton @ 12-36 m (excl. attachments)
Hoisting speed (35 T)	0-60 m/min
Hoisting speed (45 T)	0-46 m/min
Luffing time 12-36 M	63 sec.
Simultaneous speed with 2 Full load and speed motions	
Simultaneous speed with 3 Slewing and Luffing at full load and motions speed, hoisting 60% (after acceleration)	
Optimized high	1 x 38.0 m ³
Performance grabs	1 x 29.5 m ³ 1 x 12.5 m ³

AUXILIARY EQUIPMENT

Main generator set	2 x Caterpillar C18
Back-up generator	1 x Caterpillar C18
Power each	545 kVA / 436 kW (1800 rpm),
	440 V, 60 Hz
Harbor generator set	1 x Caterpillar C4.4
Power	95 kVA / 76 kW (1800 rpm), 440 V, 60 Hz

DECK LAY-OUT

Anchor mooring system	4 DMT Electric double
drum winches	3 Anchors
Anchors	3 Towing brackets
Towing brackets	Slim design, with positioning system
JIB rest	440 m ² fir wood
Deck covering	For 28 TEU or 14 FEU locations or a combination
Container fittings	With a stack load of 50 ton
	1/3 steel pipe fenders, Tyre fenders
Fender system	2 inflatable liferafts for 6 persons
Life rafts	Dinghy with davit on aft deck
Workboat	For easy access to the barge on the aft and front of
Boat landing	the barge boat landing with stairs are provided

ACCOMMODATION

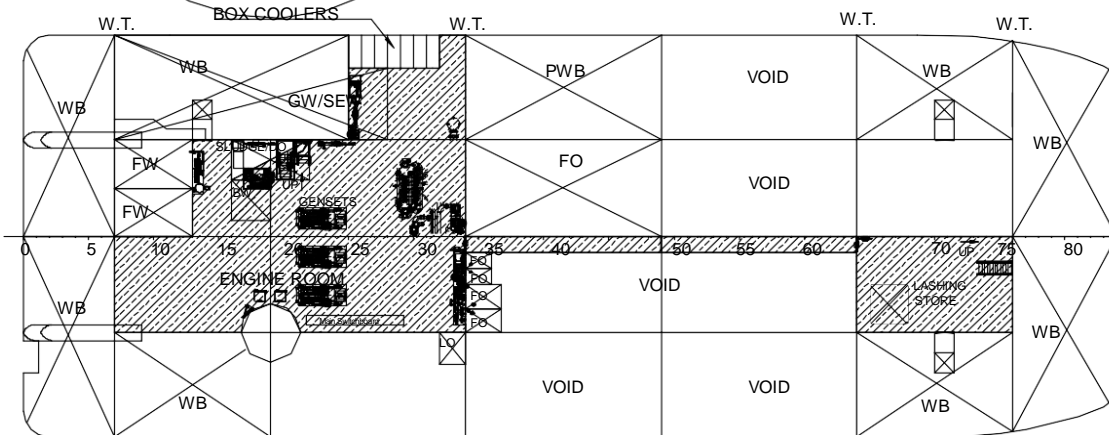
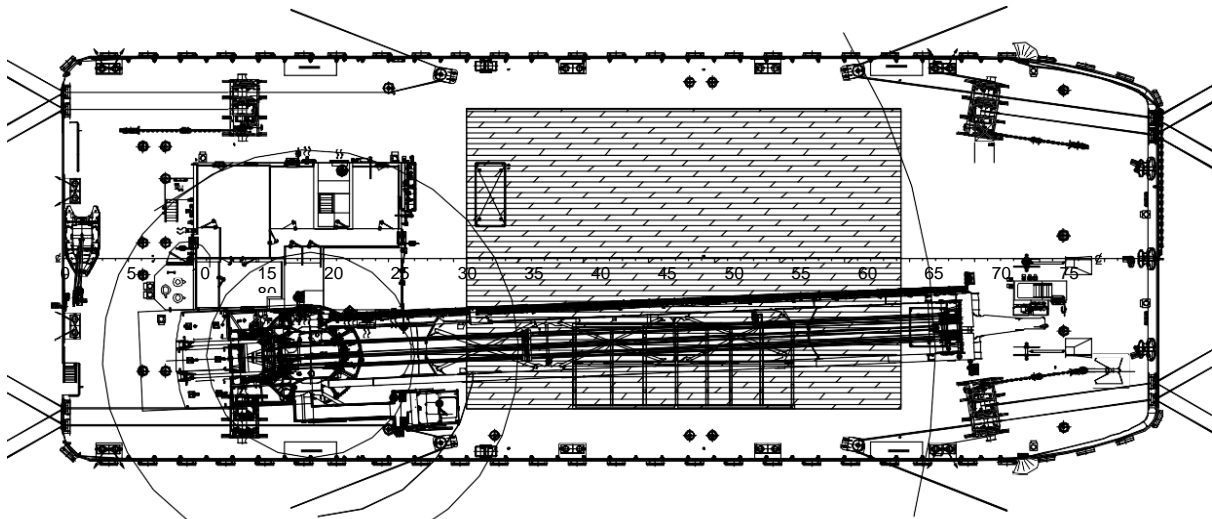
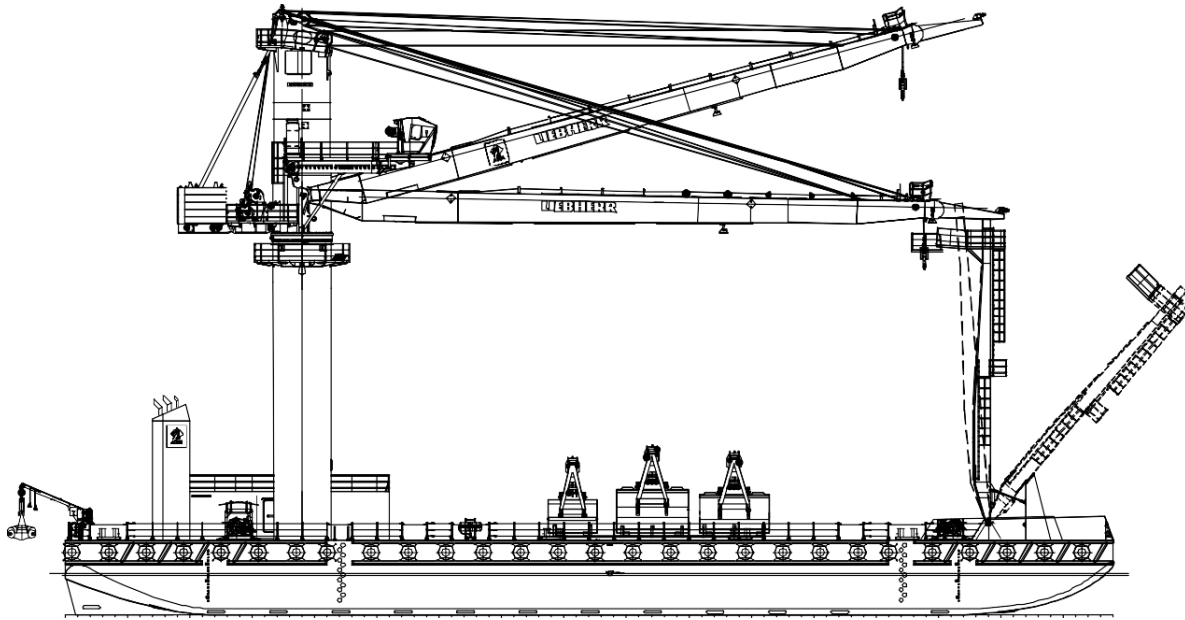
Day accommodation with pantry, change room and office for a maximum of 12 persons, provided with ventilation, air conditioning and heating.

NAUTICAL AND COMMUNICATION EQUIPMENT

Navigation lighting and communication system according Classification

Transshipment Crane Barge 6324

HARVEST DANUBE



DAMEN

Damen.com

©No part of the leaflet may be reproduced in any form, by print, photo print, microfilm, or any other means, without written permission from Damen Shipyards Group