

ALBWARDY DAMEN NEWS

NUMBER 5 - MAY 2019



In this edition:

- *Playa de Anzoras* – Special survey and modifications
- Super Shallow Draft Shoalbuster 3815
- In-House 3D scanning

ALBWARDY DAMEN



Voice of MD

Ramadan Kareem, hope you will all enjoy the spirit of the Holy Month of Ramadan.

From start 2019 we have seen some interesting repair projects going our way, one is the tuna boat Playa De Anzoras on the front page another one is an MR tanker for IS including 3D scanning and +300 meters of new piping. Also in the new building department we see interesting projects taking shape including the all new shallow draft Shoal Buster 3815, which is very well suited for the Gulf market.

Otherwise Q1 has been a bit shaky on the repair side, but with strong activity here in the early days of May. Looking ahead it's always difficult to foresee the repair loading, especially during the coming summer time. For newbuilding we have a few very interesting projects in the pipeline which will create new bench marks for what we do at Albwardy Damen.

I wish you all Ramadan Kareem and a joyful summer.

Please take good care of yourself in the summer heat!

*Lars Seistrup
Managing Director*

COLOFON

Editing and text:

Albwardy Damen, Emil Akumah
Design: Olena Tsukanova (MDEM)

Contributed to this issue:

Emil Akumah, Shehzad Bismi, Marcel vd Kreke,
Ajith Kumar, Willem Moelker, Mark Pearson,
Mohamad S. Zaaier, Pradip Saudagar, Lars Seistrup,
Shihabudeen (Shibu), Pascal Slingerland,
Alok Kumar Singh, Dileesh Viswanath

Albwardy Damen is the copyright owner of this brochure -
© Albwardy Damen 2019. All rights reserved.

Except with the prior express written permission of Albwardy Damen,
this magazine and its content may not be distributed and/or
commercially exploited.

CONTENT

- Voice of MD 2
- MV Elyon delivered to Jeruzeth, Nigeria 4
- Super shallow draft Shoalbuster 3815 construction update 5
- In-House 3D scanning 6
- MR tanker project 6
- Allied Marine Services 7
- Medical insurance 8
- Twenty-five years of adult life at Albwardy Damen 8
- Employees Day Out 2019 9
- Safety culture 10
- Training for team leaders 11
- DnV-GL Maritime Academy training 11
- Afloat refit of the *Moonlight II* completed 12
- Unit overhauls in Fujairah 13
- Playa de Anzoras Special survey & modifications 14
- Safeen prepares for the future 15



4 MV ELYON DELIVERED TO JERUZETH, NIGERIA



8 MEDICAL INSURANCE



11 TRAINING FOR TEAM LEADERS



13 UNIT OVERHAULS IN FUJAIRAH



MV Elyon delivered to Jeruzeth, Nigeria

The Sea Axe FCS 3307 Security Patrol Vessel was built in Albwardy Damen for the first time.

As per our normal procedures this aluminum vessel was constructed in our covered shed isolated from steel building areas by our dedicated and skilled team. She is one of the most successful security patrol vessel designs of Damen and well known for her high sea keeping, performance and high fuel efficiency by having a long and slender sea axe hull shape.

To carry out her security duties the wheel house and main deck mess room area is 360 degree bullet proof including wheel house windows and further she is equipped with a night vision camera, 7xCCTV cameras, 2 fire fighting monitors and a high speed rescue boat.

The vessel was delivered to Jeruzeth, Lagos Nigeria in the first quarter of 2019 and she will be serving customers of Jeruzeth with security related services. The vessel was extensively inspected and tested by the customer representatives before her maiden voyage to Lagos, Nigeria and our newcon department was praised for the performance, the quality and finishing of the vessels.

A special word of thanks goes to the High speed department of Damen Shipyards in Gorinchem who gave their full support and were a great help to complete these vessel in the planned time with the right quality.



Super shallow draft Shoalbuster 3815 construction update

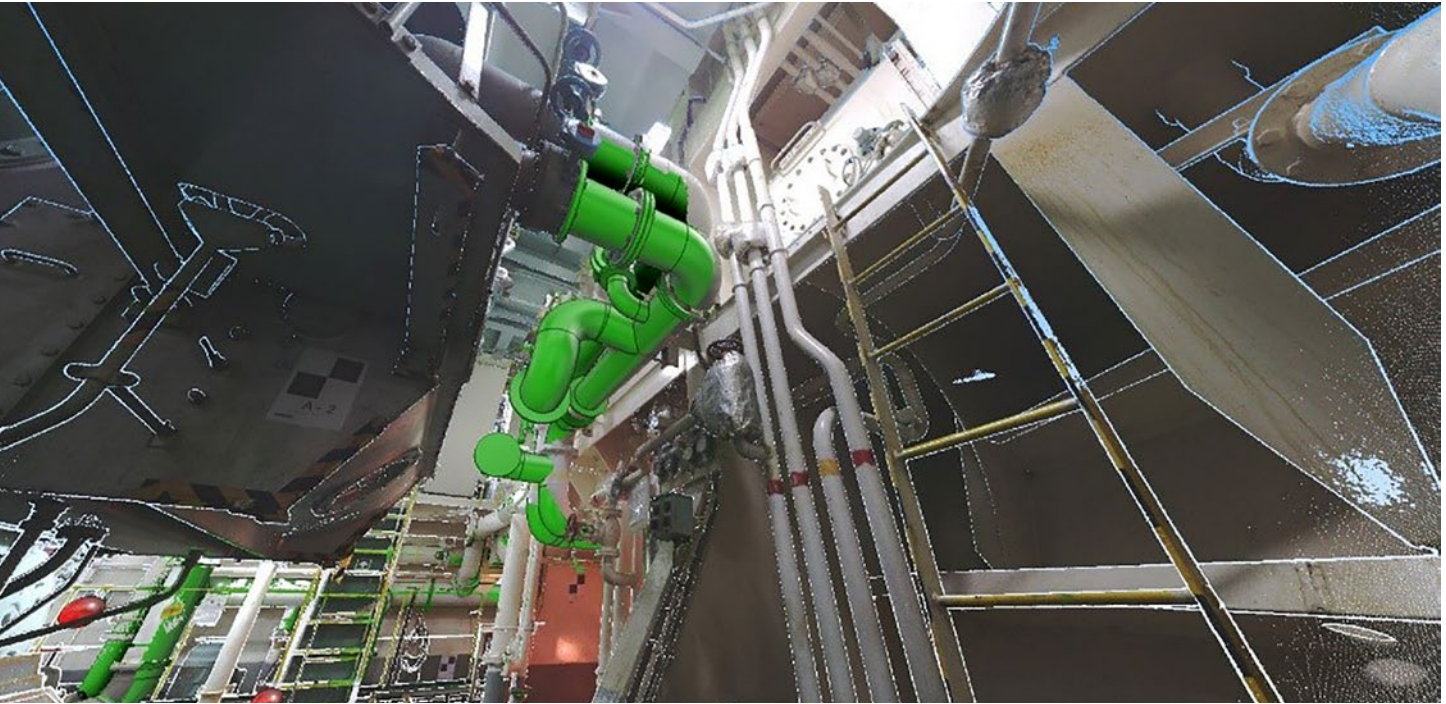
The idea behind this design is to equip a vessel for multi-functions such as towing, pushing, anchor handling, mooring, dredge support etc. independently in Ports, Coastal waters and Offshore Oilfields.

Designed with super shallow draft, she has a draft of only 1.2 meters. The vessel is equipped with a large

crane (capacity 15.6T at 7.64 meters), a large deck area, 38 ton bollard pull, push bow and 11 crew accommodation. She is ideally suited to support the civil and offshore dredging projects now planned in the GCC area as well as maintenance works in the O&G industry.

Construction in Albwardy Damen Sharjah started in November 2018. The planning is that the vessel will be launched in September 2019 followed by commissioning and sea trials in October-November 2019. The vessel is being built on speculation and is available for sale. She will be ready for delivery in November 2019.





In-House 3D scanning

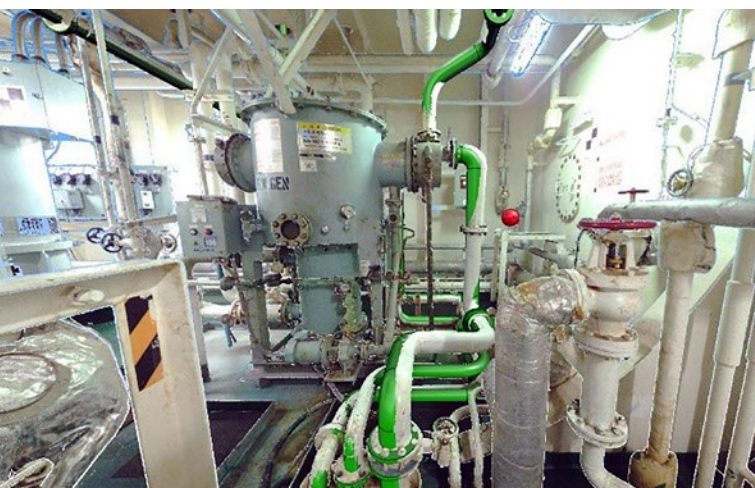
Albwardy Damen has procured Laser Scanner 'FARO Focus S70' for 3D scanning. With the ratification of long due Ballast Water Convention and IMO global sulphur limitation from 1st January 2020, a substantial number of ships are installing Ballast Water Treatment Systems and Scrubbers. A retrofit of these systems inside an already congested engine room is a big challenge for owners and 3D scanning method is widely used to scan the area for feasibility study and complete engineering for installation. Besides these jobs, 3D scanning is also used for general scanning on board, anywhere in the Vessel for any specific work in the area like pipe routings and renewal, modifications, new equipment installations etc.

MR tanker project

One of our largest projects to date is the scanning on board an MR tanker. A team of 3 engineers were onboard for three days to capture images in the vessels engine room. Approximately 200 meter pipe lines with fittings were scanned and routed. 3D Model and drawings were completed. Pipes were prefabricated in house, to reduce the time onboard.

Following the vessels arrival all pipes were fitted during the scheduled repair period of 12 days. The pipe routings were precise without collisions, the prefabricated spools fitted perfectly and the jobs were completed on time, with the required quality and within budget. Thanks to the scanning, the onboard time was reduced significantly. The short repair period was one of the major factors for Albwardy Damen to win this project.

This is another step towards our "ALL IN-HOUSE" strategy and makes the yard a "ONE STOP SHOP" for Clients, for New-building, Conversion and Repair business streams.





CAPTAIN SHAMSHER MANHAS, GENERAL MANAGER OF ALLIED MARINE SERVICES TOGETHER WITH GUIMO GONZALEZ, ALBWARDY DAMEN HEAD OF DIVING

Allied Marine Services

Allied Marine Services LLC is a regional ship owner operating bulk carriers. Based in Fujairah, established in September 2016, Allied Marine owns and operates 7 vessels worldwide and one crew boat in Fujairah.

Since 2017 we have been rendering services to Allied Marine vessels for Underwater hull cleaning and inspection on regular basis at Fujairah port. Captain Shamsheer Manhas, general manager of Allied Marine Services LLC explains: "Since last 2 years, we have been utilizing Albwardy Damen's services. The way jobs are handled and executed, been found excellent. We find the local team very friendly, which makes us very easy to communicate with them.

I would say, they always work in the interest of customers considering all the cost and time constraints. Sometimes we even gave them short notice and we found that jobs were performed with full satisfaction and with positive attitude.

Overall I am pleased to say, Albwardy Damen's services are the 1st choice for us. Even, if any other vessel owners ask for any services, my first preference would be to recommend Albwardy Damen.



Twenty-five years of adult life at Albwardy Damen

It has never been so easy waking up and joining the staff bus, going to the same place, seeing almost the same faces for over twenty years. But, yes, it takes a rare spirit of “belonging” to continue giving dedicated service to the same employer for twenty-five years.

It is in line with this commitment to human capital management that the Albwardy Damen leaders recently honoured these dedicated gents.

Pictured here below are these special colleagues with managing director Lars Seistrup (middle) and Mark J. Pearson – Dubai-Fujairah operations director. They are, from left:

- SOHAIL TARIQ – mechanic general, Damen Sharjah
- SEBASTIAO REBELO – senior supervisor, Fabrication, Fujairah
- JAHANGIR ALAM – mechanical supervisor, Dubai
- DINESH SHANTARAM NAIK – fabrication supervisor, Damen Sharjah
- THOMAS FRANCISCO FERNANDES – senior fabrication Supervisor, Dubai
- SANTOSH BALSU DESAI – junior welding supervisor, Damen Sharjah
- ARSHAD MEHMOOD AZIZ UR REHMAN – blasting/painting coordinator, Damen Sharjah
- RAMAKRISHNA PILLAI SREEKUMAR – mechanic general, Damen Sharjah

Medical insurance

In UAE the temperature can go up to 50 Degrees Celsius. Our employees work under these extreme weather conditions and Ship repairs/ship building industry is labour-intensive where most of the work is manual as well. Under these difficult circumstances employee health is of great concern and needs to be taken care of. Therefore, Dubai Health Authorities made it mandatory to have medical insurance.

As a company, we have already provided insurance cover to all our employees. Instead of providing basic medical cover as prescribed by the Government, we have provided enhanced medical cover. As a result, employees can have access to better Clinics, faster service and increased limits for medicines and medical tests.

One needs to understand that Companies have to make money in order to run their business, hence Insurance Companies always monitor how much premium they have collected from our company and how much money is spent by employees by using these cards. This is called Claim Ratio. Last three years our Claim Ratio is more than 150%. This means if they collected premium of AED100, they have to pay AED150 to settle our medical expenses. Therefore, every year they keep increasing insurance premium to recover the loss they make.

Last few years our medical insurance cost has increased considerably and is still going up. This is unsustainable. Ultimately, we will be forced to go for the basic insurance plan suggested by the authorities to control the costs. However, this will affect all of us as service is generally slow, access to better clinics may not be available, co-pay will be higher and there will be further restrictions on the medical expenses.

So how can we control medical costs? First of all we need to use this card only when medically necessary. For normal treatment such as fever, cold, backache, etc. we could first avail services of GP Clinics instead of going directly to hospitals. For major health issues, with prior permission from Insurance Company, in-patient treatment can be arranged in the home country where medical costs are generally very low. All these measures can help us to control our medical costs to a reasonable level.



To our colleagues, the editorial team of the newsletter salutes you!!



Employees Day Out 2019

On 1st March 2019, the management organized Employees Day Out 2019 at the wonderful Dubai Bollywood Park.

This was a complete new experience for the seven hundred workers who attended, compared to the previous year's Fun Day at the Iceland Water Park at Ras Al Khaimah.

Said coating QC engineer Himanshu: "It was a good entertaining place. We enjoyed the dance performances on different songs, 3D view rides such as Sholay and Krish, Indian culture music, songs and stunts shows at the park.

The shows were incredible! The complexity of the dance shows was mind blowing and we loved it from start to end. There were some dummy Bollywood Heroes also entertaining the audience with dance and acting, such as THE BOLLYWOOD SUPERSTAR Amitabh Bachchan, Shahrukh Khan and Salman Khan."

"Everything was lovely; the ambience, the shows and the stations. The weather was also amazing there to enjoy the park and enjoy the colourful night there. I think all age groups did enjoy it. Such nice shows, nice actors who were performing and at clean place. The food was delicious at the restaurants though."

"Thanks to HR-Admin team who did the organizing for the Bollywood Park. They assisted us with Location Map, Program schedule, Entry ticket, Food passes and amazing Parking facilities".



Safety culture at Albwardy Damen



At Albwardy Damen, safety is a core value and the basis of our strategy. Our drive is to be recognized as the benchmark for safety in our industry. To achieve this, we have taken steps to ensure that safety is an integral part of our processes and guides our everyday actions.

Safety is a core value that we want everyone to share, from managers, employees and other stakeholders.

WHY IT MATTERS?

We are fully committed to operating in a competitive environment and having safety as a core value of what we do. This is recognized and reflected in the company 'Values' – a job is only well done if done safely.

For the last six years, the number of total recordable injury cases have continued to decline (67% reduction) and we are now on the lowest injury rates achievement, which is recognized by customers as well. We want to go even further and be recognized as the benchmark for safety in our industry.

GET EVERYONE INVOLVED

To operate in a truly safe environment, everyone must fully embrace the safety values of the company and make the related behaviors a natural part of their daily work. With this in mind, we focus on two key levels.

Our employees' commitment: Employees involvement and experience are essential since safety starts with their responsibility. We encourage employees to systematically report any incidents or hazards that they come across. Personal recognitions and incentive schemes are in place to encourage employees.

Our management commitment: Our managers have a key role to play in reminding everyone about the everyday importance of safety and in organizing training and awareness sessions on safe system of work (SSOW).

BEHAVIORAL SAFETY INTERVENTIONS – GIVING EVERY EMPLOYEE A WAY TO TAKE ACTION

Launched in 2014 across the board, the first stage of this system is available to all supervising staff and above. This gives an opportunity to intervene at any time if an action or a situation appears to endanger personnel, property or environment. The intervention is a structured way of asking questions enabling the employees to come up with solutions to the problem.

Behavior Based Safety believes in No Blame culture. The objective of the behavioral intervention is to engage employees in a constructive conversation so that we can move forward together.



Training for team leaders

Newly-promoted team leaders were recently taken through nine days of various topics which were moderated by the managing director Mr Lars Seistrup as well as each member of the management team, plus the HSEQ manager.



The topics were:

- Internal/External Stakeholder Interests
- Root Cause & Failure Analysis
- Team Leadership Requirements
- Competency & Management of Risk
- Achieving HSE Goals: Team Leader's Roles
- Customer Focus
- Cost Control
- Reports & Communication Clarity
- The Company Identity: Ethics/Code of Conduct; Mission-Vision-Values.

At the closing ceremony, the Management Team held the course evaluation in the form of open-door "improvement ideas" session with the entire trainees. The company awarded each participant the Damen Training Certificate.

DnV-GL Maritime Academy training

As part of management efforts to improve performance through "cross-functional audits" within the company, eighteen (18) selected staff recently attended the 3-day DnV-GL Maritime Academy training in Marine Companies IMS Internal Auditing as per ISO 9001, 14001, 45001.

Opening the course, the managing director Lars Seistrup exhorted the participants to 'focus and use internal audits as a management tool for improving the system as well as the economics of our business'.



Afloat refit of the *Moonlight II* completed



In Q1 2019 we were awarded the afloat refit of the Burgess managed yacht *Moonlight II*. Motor yacht *Moonlight II* is one of the world's largest charter vessels at over 90 metres and her towering profile and sleek hull make this superyacht an unforgettable presence within the industry. She was built in 2005, has a cruising speed of 17 knots and can carry over 35 guests.

Workscope carried out on board included:

- Stern door hydraulic overhaul
- Side door teak works and electrical overhaul
- Generator silencer modifications
- RO plant overhaul
- Pipeworks
- Exhaust blower overhauling
- Capstain overhauling
- Anchor windlass overhauling
- Galley equipment servicing
- FW pump installation
- Jetski servicing
- OWS calibration
- A/C condenser overhauling
- Elevator annual servicing
- Cabin modifications / refurbishment

All this work was completed to the owners representatives satisfaction in the allocated time period around 45 days in Port Rashid. Albwardy Damen Dubai frequently undertakes work on the growing superyacht presence that we see coming to UAE waters.





Unit overhauls in Fujairah

As usual, Fujairah Workshop most of time gets jobs on short notice.

One Friday afternoon, we received a call from one of the technical superintendents of Mideast Ship Management Ltd about his one vessel's main engine's problems. His vessel was facing issues with her engine and requiring urgent overhauling for 5 Nos units.

We mobilized a team the same evening, but as the vessel had only a short time on the anchorage we mobilised two teams.

Much before the expected time, we completed the overhauling job very satisfactorily. Vessel superintendent was quite satisfied with Albwardy Damen's strategy of two teams and their performance.





Playa de Anzorás Special survey & modifications

Playa De Anzorás, a 1999 year built fishing vessel was brought to Albwardy Damen by her Spanish owner, PEVASA to carry out her special survey under BV class, a full maintenance program and modifications to vessels equipment and machinery.

All maintenance and modification jobs were carried out in house in close cooperation between the engineering and the various departments to full satisfaction of the owners.

Following are the main jobs carried out as part of Special survey & modifications:

- Retrofit 1750 KW Shaft generator coupled to the main engine – Engineering & FEA analysis of the foundation, Fabrication of foundation, Installation & alignment of the shaft generator and routing of all the associated cabling, termination and commissioning.
- Installation of new RIM thruster – Remove the conventional fixed pitch bow thruster, Fabricate new tunnel and install new RIM thruster together with the associated cabling and termination.
- Replace the Hydraulic pump drive auxiliary engine with electric motors – Associated modifications on the foundations, electrical, piping side and commissioning.
- Extension of the electrical control room and installation of new switch board for the retrofit shaft generator.
- Installation of Stern thruster drive motor & frequency drive.
- Replacement of the existing sewage treatment plant and associated piping modifications.
- Installation of new compressor and bilge separator.
- Extension of the existing platform over main deck.
- Fabricate and install new platform over the main engine.
- Fabricate and erect new storage spaces in the cargo conveyor space.
- Blasting & painting of 14 Nos. of Fish cargo tanks.
- Conversion of toilet to bedroom in the accommodation.
- Various jobs related to special survey – Hull blasting and painting, Tail shaft survey jobs, Steel renewal as per the UT gauging, Sea valves & over board valves, etc.



ASD TUG 2411 AL MARYAH 1

Safeen prepares for the future

For many centuries Abu Dhabi has played a central role in the flow of people and goods not only in the Arabian Gulf but across the Indian Ocean. Its pivotal position between Europe and Asia makes it a natural transshipment point as well as a gateway into the Middle East. At the heart of its modern economic success lies Abu Dhabi Ports and its subsidiary Safeen, formerly known as Abu Dhabi Marine Services.

“Abu Dhabi Ports owns and operates the emirate’s eleven ports and so handles between 15,000 and 25,000 vessels each year,” explains Captain Adil Ahmed Banihammad, chief marine services officer at Safeen. “At its core lies our flagship deep-water Khalifa Port and the adjacent Kizad, the Khalifa Industrial Zone Abu Dhabi, which between them are currently investing billions of dollars in the next phase of their expansion.”

DOUBLING CONTAINER CAPACITY

As part of that programme, Abu Dhabi Ports has partnered with China’s Cosco Shipping to double the container capacity of Khalifa Port to five million containers a year by extending the quay wall and dredging the harbour to allow it to accept the largest container ships. The increasing shipping activity is expected in turn to encourage foreign companies to set up in the industrial zone. All this additional activity will in turn create demand for Safeen’s services.

“Safeen came into existence in 2014,” says Captain Banihammad, “with the intention of becoming the preferred provider of world-class integrated marine and ports services. As a marine services provider our focus is on delivering all the port and marine services to Abu Dhabi Ports. These include towage, pilotage, salvage, mooring, emergency response including oil recovery, rescue, bathymetric services and buoy maintenance. We also operate a sophisticated vessel tracking system monitoring all vessels using Abu Dhabi’s ports and waterways so as to maximise efficiency and safety.

“However, we are not limited to Abu Dhabi Ports. We serve other customers both within the region and beyond. Recently we have become involved in transshipment in Africa as well as in the UAE. So we are working on a number of fronts in the marine domain.”

In January 2019, Safeen took delivery of two Damen ASD Tugs 2411, following the signing of a contract just three months earlier at the Abu Dhabi

Boat Show 2018 by Captain Banihammad and Pascal Slingerland, regional sales director for Damen Shipyards Group. “With Khalifa Port now one of the world’s fastest growing container, bulk cargo and roll-on, roll off vehicle transport ports,” continues Captain Banihammad. “Of the many thousands of vessel movements that occur at our ports, around six thousand require pilotage and towage services. These are generally for the largest vessels at our three largest ports.

HANDLING THE LARGEST VESSELS

“Safeen has a big fleet of vessels, made up of speed boats, pilot boats, survey boats, a buoy maintenance vessel and two oil spill recovery vessels, as well as our tugs. However, we need to have the resources in place to manage the very large container ships that will berth at the ADT and Cosco terminals, as well as the bulk carriers bringing in bauxite for Emirates Global Aluminium.

“We have a plan to be ahead of Abu Dhabi Ports so that we are ready from day one to meet their needs as their service provider. The 70-tonnes of pulling power delivered by the ASD Tugs 2411 will enable us to handle our new visitors to Khalifa Port efficiently and safely. In particular, they need to be capable of bow-to-bow operations, something that we haven’t done before. Additionally, in some areas of the port we will need to deploy a small number of powerful tugs, whereas in others we can use a larger number of less powerful tugs.”

The two ASD Tugs 2411 will join three other Damen vessels already in the Safeen fleet; a Stan Tug 1907, named Ghayathi, delivered in 2018 and the Shoalbuster 2609 *Al Maqtaa*, delivered in 2016. The *Al Shahama*, a Damen Buoy Maintenance Vessel, built in 1994 in Abu Dhabi under the Damen Technical Cooperation programme, is also an active member of the Safeen fleet.

The three-month delivery timetable was made possible by Damen’s policy of building its most popular vessels for stock. The final outfitting of the ASD Tugs 2411 was done nearby at Damen Albwardy, in Sharjah, and so just needed to be finished to meet the requirements of Safeen before sailing for Khalifa Port. Albwardy Damen will continue to support the vessels with warranty and after-sales services. The ASD Tug 2411 is one of Damen’s most popular designs, with over 100 in operation around the world.

“We’re very pleased that Abu Dhabi Ports has opted for our proven ASD Tug 2411 to support the Abu Dhabi Ports container terminals,” said Damen’s Pascal Slingerland.



SHIP REPAIR

Since 1978, Albwardy Damen has been providing a complete package of professional ship repair, shipbuilding and marine engineering services.



AFLOAT REPAIRS

CDC & BOSIET Certified Riding squads are available to meet customer requirements on board vessels.



DIVING SERVICES

Albwardy Diving Services is headquartered in Fujairah from where it serves the UAE Ports, Anchorages and beyond.



NEW BUILDING

Supported by Damen quality building technology we build Damen as well as non-Damen designs in steel and aluminum up to 120 metres.

ALBWARDY DAMEN

SHARJAH - MAIN OFFICE

Hamriyah Free Zone, plot HD 22
P.O. Box 52125
Sharjah
United Arab Emirates

DUBAI

Dubai Maritime City, plot SR-4A
P.O. Box 6515
Dubai
United Arab Emirates

FUJAIRAH WORKSHOPS AND DIVING SERVICES

Inside the port of Fujairah
P.O. Box 966
Fujairah
United Arab Emirates

phone +971 6 506 5300
e-mail sales@albwardydamen.com

phone +971 4 324 1001
e-mail sales@albwardydamen.com

phone +971 9 222 8040
e-mail sales@albwardydamen.com
e-mail diving@albwardydamen.com