

M A R K

CURRYER

L I F E I N T H E C I T Y

K
R
A
M



Mark Curryer's bold, atmospheric cityscapes are inspired by distinctive architecture and the day to day trappings of urban life. He is fascinated by the effect of rain on the city, particularly at night, and the way the multiple light sources play in the reflections.

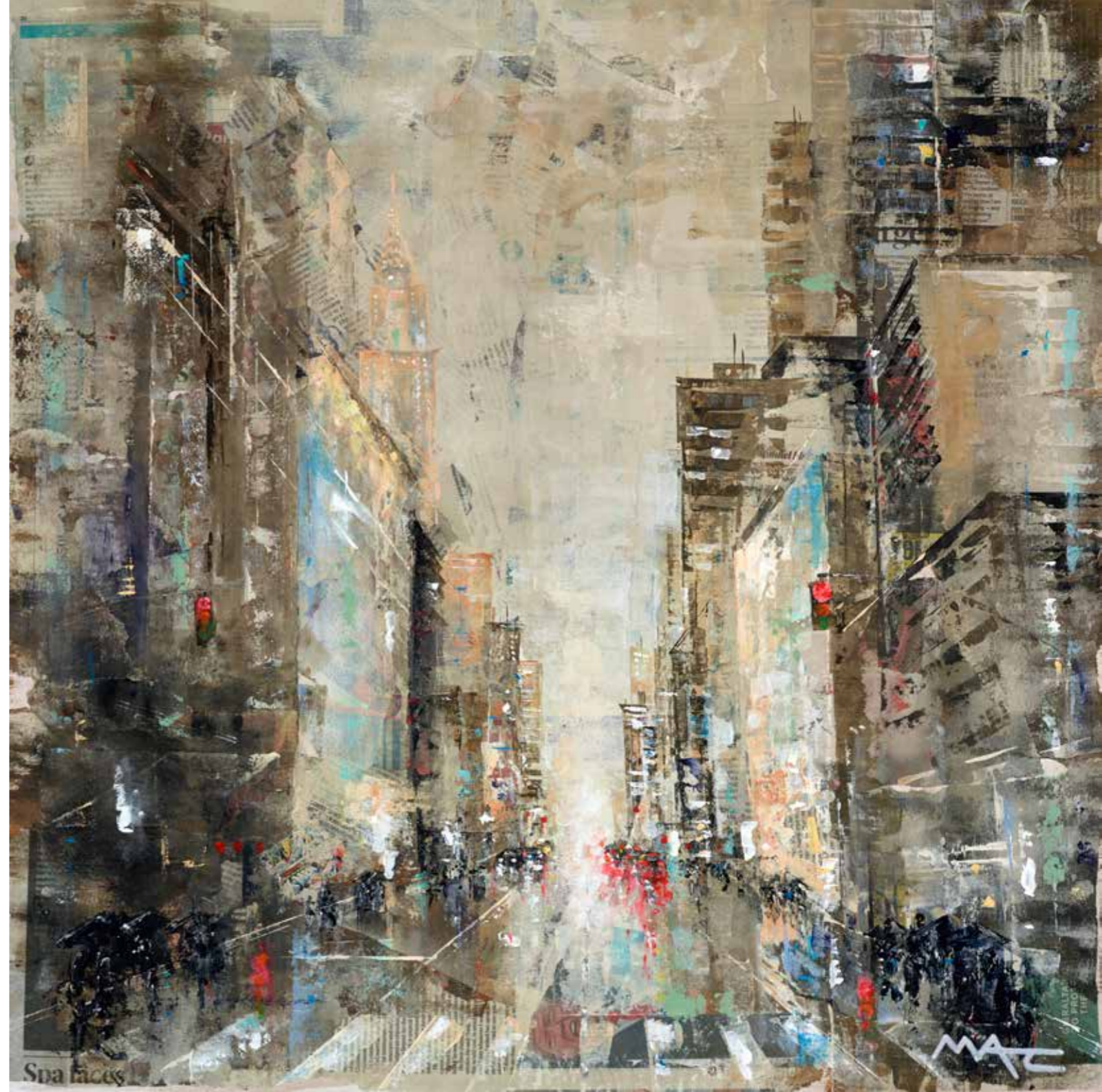
Mark's stunning images are created with little conventional brush work. Instead he uses a wide range of alternative tools including rollers and scrapers to achieve the textures and effects which are characteristic of his work. His use of newsprint adds a further layer of texture to each piece; while some of the exposed newsprint is by design, other parts occur naturally which reflects the unexpected and unpredictable nature of life lived at speed in the city.

Born in Eastbourne, Mark had always had a keen interest in drawing and painting and at an early age, he won a number of competitions for his drawings. He studied three-dimensional design at Eastbourne Art College and built a successful career, but despite the attraction of working in the city, the draw towards art was ever present and Mark finally returned to his first love, painting.

MARK HAS EXHIBITED ALL OVER THE UK WITH HIS WORK SELLING WORLDWIDE. ASIDE FROM A SUCCESSFUL SERIES OF SELL-OUT SHOWS, SOME OF HIS RECENT ACHIEVEMENTS INCLUDE BEING NAMED AS A FINALIST FOR 'BEST UP AND COMING PUBLISHED ARTIST' OF 2018, AND A SUPERB LIVE PAINTING EXHIBITION AT THE EDINBURGH FRINGE.

HERE
COMES
THE
RAIN
AGAIN

ORIGINAL
24" x 24"
£995





IT'S
HOME
TIME,
LONDON

ORIGINAL
30" x 40"
£995

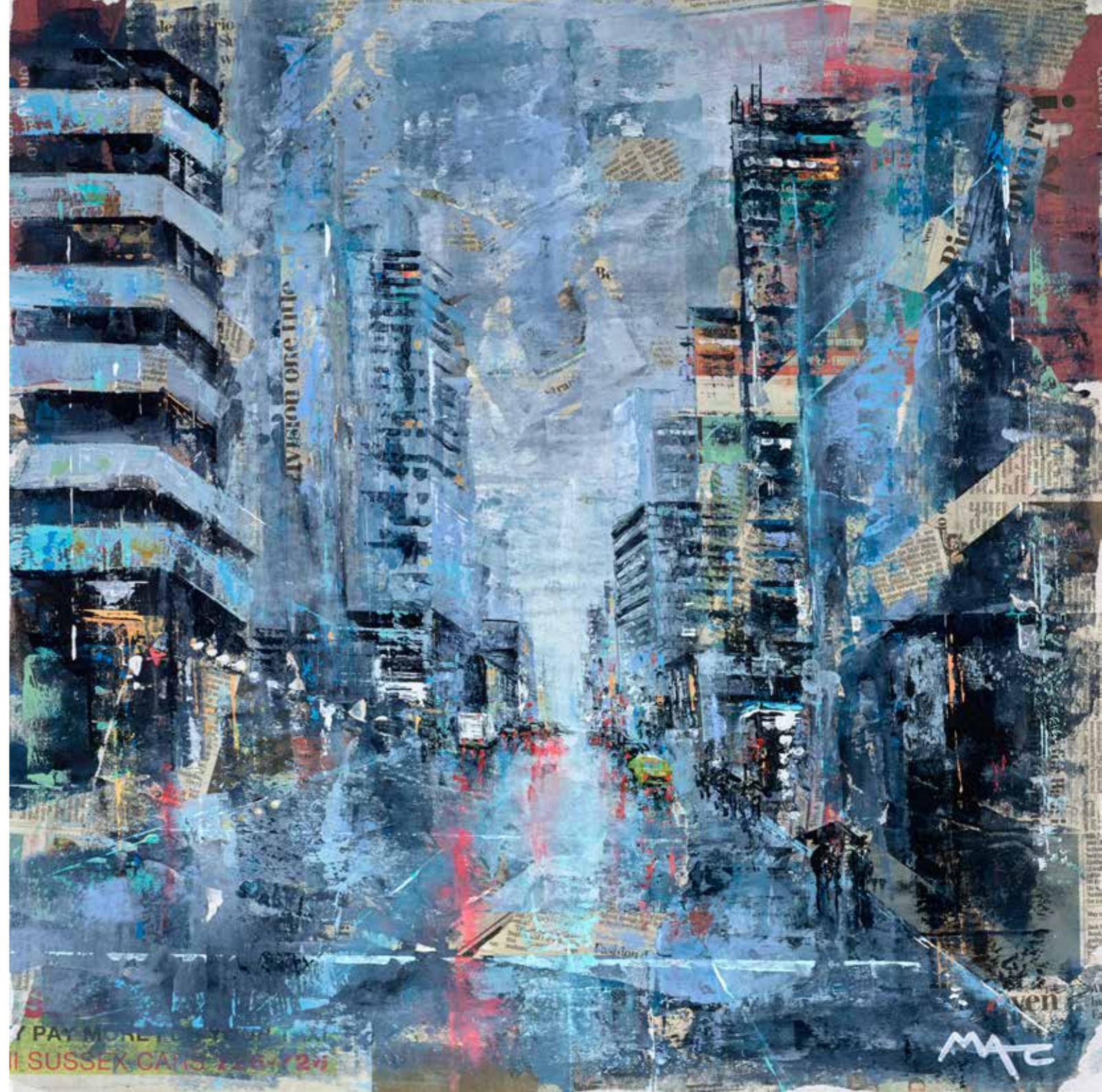


CAN

RAINSTORM,
NYC

ORIGINAL
24" x 24"
£995

NYC





DECEMBER,
ST. PAUL'S,
LONDON

ORIGINAL
48" x 24"
£1,495



N I A R

EVENING
RAIN
IN
LONDON

ORIGINAL
36" x 36"
£1,495

R A I N

L
O
N
D
O
N

ALL
ABOARD
THE
NIGHT BUS,
LONDON

ORIGINAL
40" x 30"
£1,495



M A R K
CURRYER