



*Come Alive In Nature*



3 BHK Luxurious Apartments  
**Bibwewadi**



### **Park Landmark- 3 BHK Luxurious Home- Bibwewadi**

In today's world of concrete jungle, living amidst 500 trees is bound to have a positive impact on your lifestyle - the way you think, the way you feel and the way you enjoy your life. Park Landmark offers an unadulterated green community and an opportunity to smile your way to green glory.

While the greenery at Park Landmark ensures a peaceful state of mind, our meticulously designed facilities guarantee a comfortable lifestyle. With every conceivable amenity at your disposal, living here will be like a long vacation on a hill station with 5 star luxuries.

# LAYOUT







## **Common Amenities and Features**

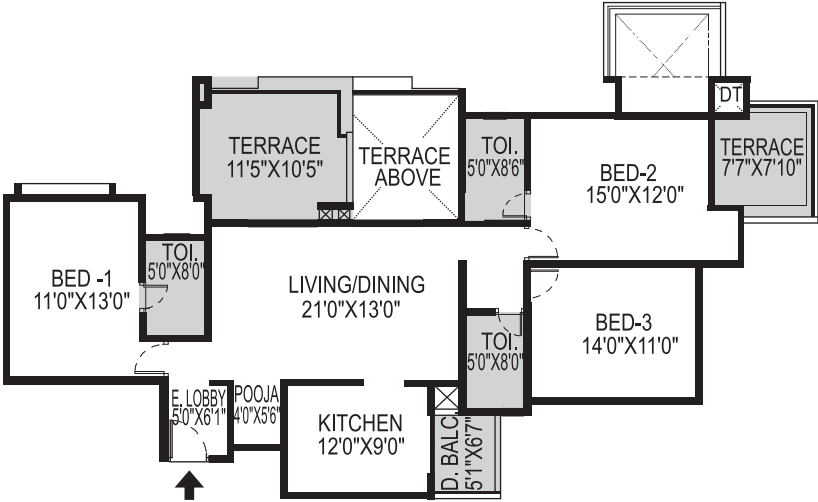
- Vehicle free Landscaped Garden
- Air conditioned Gymnasium
- Multipurpose Hall
- Swimming Pool
- Children's Play Area
- Piped Gas Connection
- LPG Reticulated Systems in kitchen
- Garbage Disposal
- Fire Fighting System
- Rain Water Harvesting
- Automatic Elevators
- Gen-set backup for common areas



## Specifications

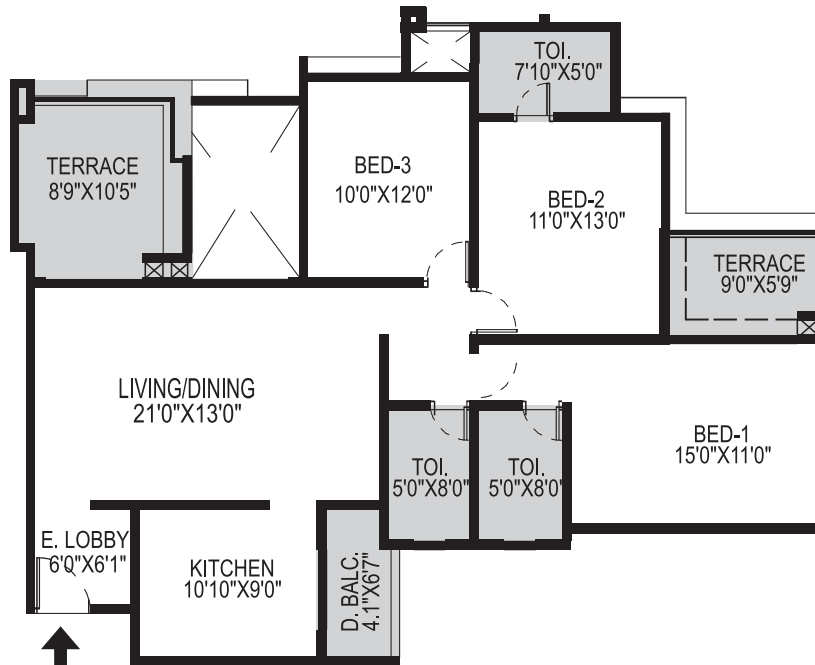
- 3'x3' vitrified flooring
- Aluminium sliding windows with mosquito mesh
- Modular kitchen with electric chimney and hob
- Exhaust fan in all toilets
- Legrand/equivalent make electrical switches
- Hindware/Kohler/equivalent make sanitary ware
- Jaquar/equivalent make bathroom fittings
- Specially designed doors
- Geyser and shower partition in bathroom
- Concealed plumbing, copper electrical wiring with conveniently placed adequate light & power points
- Electrical provision for AC in all bedrooms
- Anti-skid flooring in all attached terraces
- Internal OBD paint & internal acrylic paint
- Provision for inverter

3 BHK PLAN



3 BHK	3 BHK	SQ.FT	SQ.MTRS.
	CARPET	1338	124.21
	SALABLE	1806	167.78

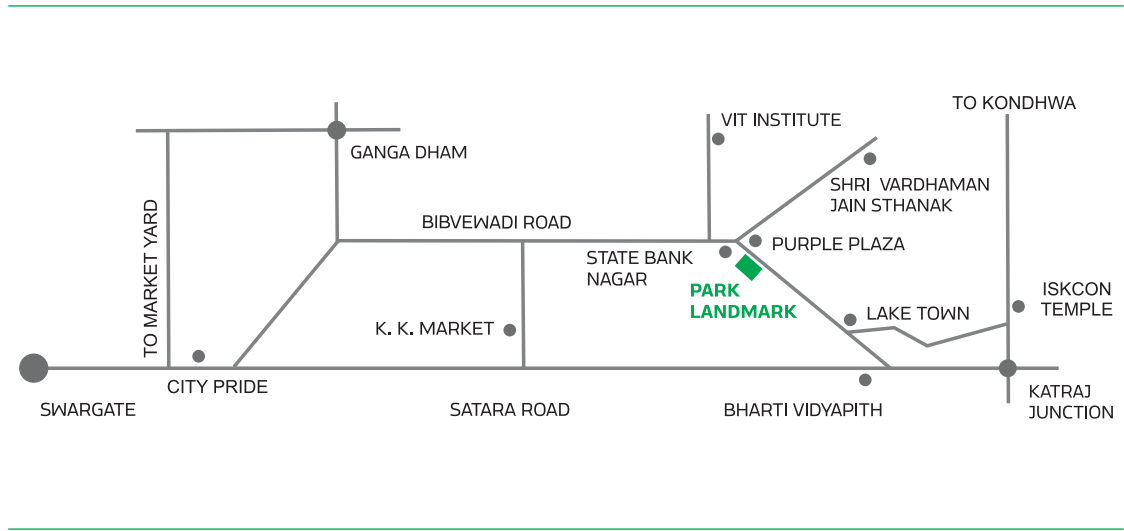
## 3 BHK PLAN



**3 BHK**

3 BHK	SQ.FT	SQ.MTRS.
CARPET	1201	111.57
SALABLE	1622	150.68

LOCATION MAP





## CREDITS

**Architect:**

Abhikalpan Architects  
and Planners

**Structural Consultant:**

G. A. Bhilare and Associates

**Electrical Consultant:**

Consulting Electrical  
Engineers Combine

**Landscape Consultant:**

Suman Shilp

**P H E Design Consultant:**

Ace Consultants

— A Project By —



Pride Purple Group

**Site Office:** Park Landmark, Sr. No. 665/ A, Near SBI Colony,  
Bibvewadi, Pune - 411037. Call: +91 - 98502 80000. [www.pridepurplegroup.com](http://www.pridepurplegroup.com)

**Corporate Office:** Pride Purple Group, 5<sup>th</sup> Floor, Pride House,  
University Road, Pune-16 • Tel: 020-66319100/01