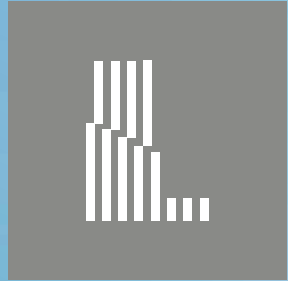




GREATNESS

is a feeling that you own in your heart and see in the eyes of
people who look up to you.



PRESIDENTIAL TOWER

PIMPLE SAUDAGAR

WHAT DO YOU EXPECT FROM
A PLACE YOU CALL HOME?

Well, even though it's a lot and not easy to put down in words, here are
a few expectations...

Happiness for you, wellness for your loved ones, togetherness for your
family, calmness in every day and goodness in every way. And then you
realise that it's all of this that actually adds up to greatness.

GREATNESS IS
NOW YOURS.



PRESIDENTIAL
TOWER



GREATNESS AT EVERY STEP.

So, what do you expect from an address that promises to make greatness your everyday companion?

Well, we believe you should expect a lot.

And so, we at Raviraj Realty and Govind Group have crafted Presidential Tower at Pimple Saudagar, with everything possible to flatter you, so that you can flaunt it to celebrate your greatness.

- **A 2-ACRE WELL-PLANNED PROJECT**
- **3 AND 4 BEDROOM RESIDENCES**
- **24-STOREY HIGH-RISE TOWER**
- **30+ LIFESTYLE AMENITIES ACROSS GROUND, PODIUM & ROOFTOP LEVELS**
- **UNOBSTRUCTED GREEN VIEW FOREVER**
- **CHOICEST SPECIFICATIONS FOR AN ULTRA-PREMIUM LIVING**



WELCOME HOME TO GREATNESS

What happens when you first step into Presidential Tower? Well, you are greeted by a luxurious grand entrance lobby that will give you a glimpse of the greatness inside.

With a reception desk, comfortable seating and an ultra-premium ambience, your guests will feel the grandeur, even before entering your residence.





INDOORS THAT MAKE YOU FEEL GREAT

What's it like to call Presidential Tower your address? Well, there are a lot of privileges that come with it. And none better than what its residences have to offer.

Every residence here is designed with a lot of thought and crafted with attention to detail to make sure you own nothing less than greatness.

- 1401-1891 SQ. FT. GRAND RESIDENCES
- MAXIMUM PRIVACY FOR EACH RESIDENCE
- EXCELLENT CROSS-VENTILATION & NATURAL LIGHT
- CLEAR VIEW OF SKYLINE & GREENS

30+ AMENITIES THAT BEFIT GREATNESS

Beyond the location and the indoors, is a desire for comfort and leisure that seeks both exclusivity and excellence.

Here, the choicest lifestyle amenities are spread across 3 levels to gift you an experience that soothes your senses while fostering the perfect balance of me-time and we-time.



GROUND LEVEL: RECREATION ZONE

Presidential Tower offers amenities at the ground level that provide avenues for everyday recreation.

From kids enjoying outdoor games to conversations at the gazebo and performances at the amphitheatre, the vibe is refreshing and positive.

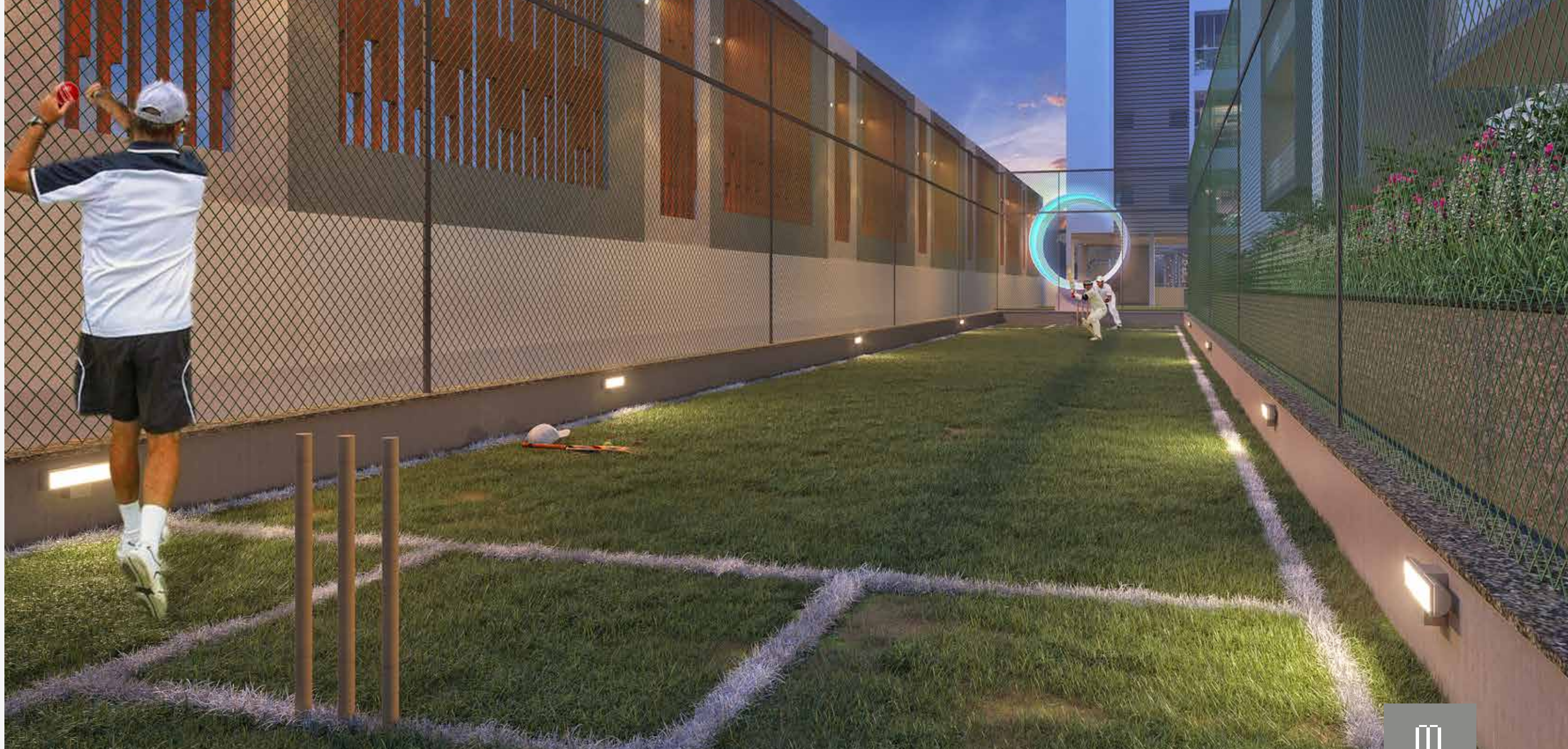
- AMPHITHEATRE
- GAZEBO
- KIDS' PLAY AREA
- MULTIPURPOSE COURT





MORNING

JUST DO IT



PODIUM FLOOR: ACTIVITY ZONE

The podium at Presidential Tower is one of the most premium and stand out features- something noone in the neighbourhood offers.

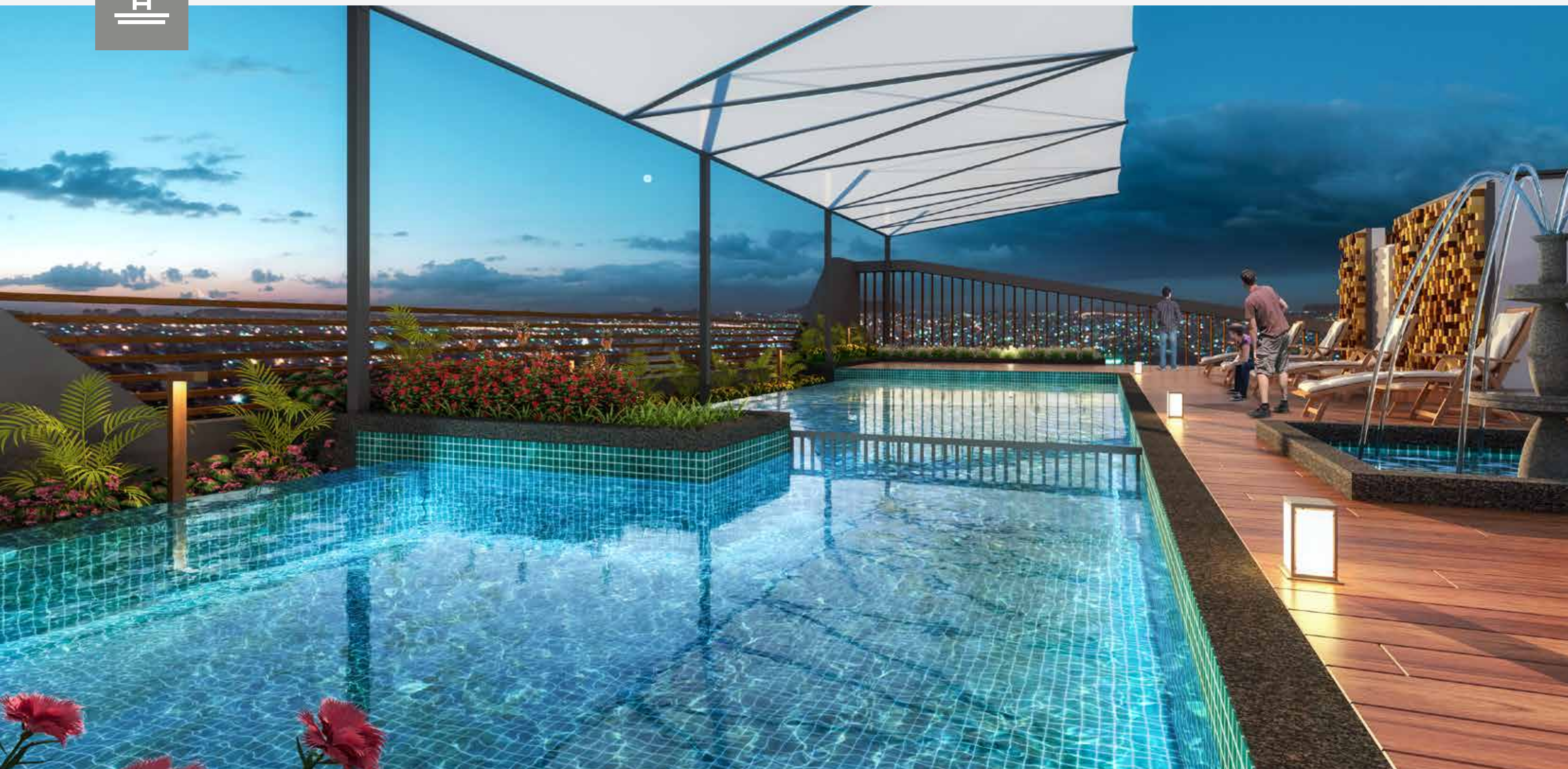
It is full of sports and games spaces that allow you to sweat it out and break away from the mundane routine.

- PADDLE COURT
- MINI - GOLF COURT
- GAZEBO
- OPEN AEROBICS
- TUBE TABLE TENNIS
- CRICKET COURT
- GYMNASIUM
- GAMING ZONE
- CARD ROOM / LIBRARY

TERRACE FLOOR - COMMUNITY ZONE

Right at the top, Presidential Tower opens you to not only the skyline and the stars, but to spaces that have a fine mix of rejuvenation & relaxation. From a pool to take a dip in to spaces for special celebrations, everything is here, right at the top. All you need to do is reach the top, literally, to indulge in some exclusive lifestyle refreshment.

- SWIMMING POOL
- KIDS' POOL
- FOUNTAIN
- PERGOLA WITH SEATING
- SHOWER WITH TOILETS
- MULTIPURPOSE AREA
- CONFERENCE
- CAFETERIA WITH SERVING COUNTER
- MUSICAL GARDEN AND SEATING
- STAR GAZING DECK
- GAZEBO WITH SEATING









SPECIFICATIONS

STRUCTURE

- Earthquake-resistant RCC frame structure
- External RCC/ 6 AAC & internal wall 5" light-weight AAC blocks/bricks

PAINTING

- Emulation paint for all internal walls
- Superior quality apex / texture / protective paints for exterior

SMART HOME FEATURES

- Digital Lock
- Automation
- Three-tier security
- Alexa* voice command
- Advanced security system with video door phone connected to your smart phone

FLOORING

- Large sized marble-finish glazed vitrified tiles in living, dining, kitchen & bedrooms
- Anti-skid tiles in dry balcony
- Anti-skid tiles in terraces

WINDOWS

- System windows with mosquito net
- Granite sill at the bottom of the windows

DOORS

- Attractive main entrance door with premium quality fittings & fixtures
- Attractive finish for main door
- Internal doors with laminated flush door
- Laminated flush doors in washrooms

KITCHEN

- Granite/Quartz kitchen platform
- SS Sink
- Ceramic/glazed tiles up to 6 feet above kitchen platform
- Provision for water purifier & gas line

BATHROOMS/ TOILETS

- CP fittings – Grohe/ American Standard or Equivalent
- Flooring – Anti-skid tiles
- Designer decorative dado tiles up to 8 feet
- Geysers in all bathrooms
- Toilet door frames in granite
- Glass partitioning in master toilet

ELECTRIFICATION

- World-class modular switches
- Concealed copper wiring with MCB
- Adequate electric points with TV & telephone points in living & master bedroom
- AC in all bedrooms

POWER

- DG backup in common areas & for light & fan points in the flat

GREATNESS WITH EXCLUSIVE ACCESS

While Presidential Tower and its every aspect, add up to the greatness you experience every day, it also needs an access to a lifestyle that is unhindered and uncluttered.

Standing tall at Pimple Saudagar, Presidential Tower gives you an express connection to every space of urban importance from Aundh to Hinjawadi & beyond. From learning to celebrating, everything has a sense of greatness about it.

JAGTAP DAIRY CHOWK - 1.1 KM

AUNDH - 6.2 KM

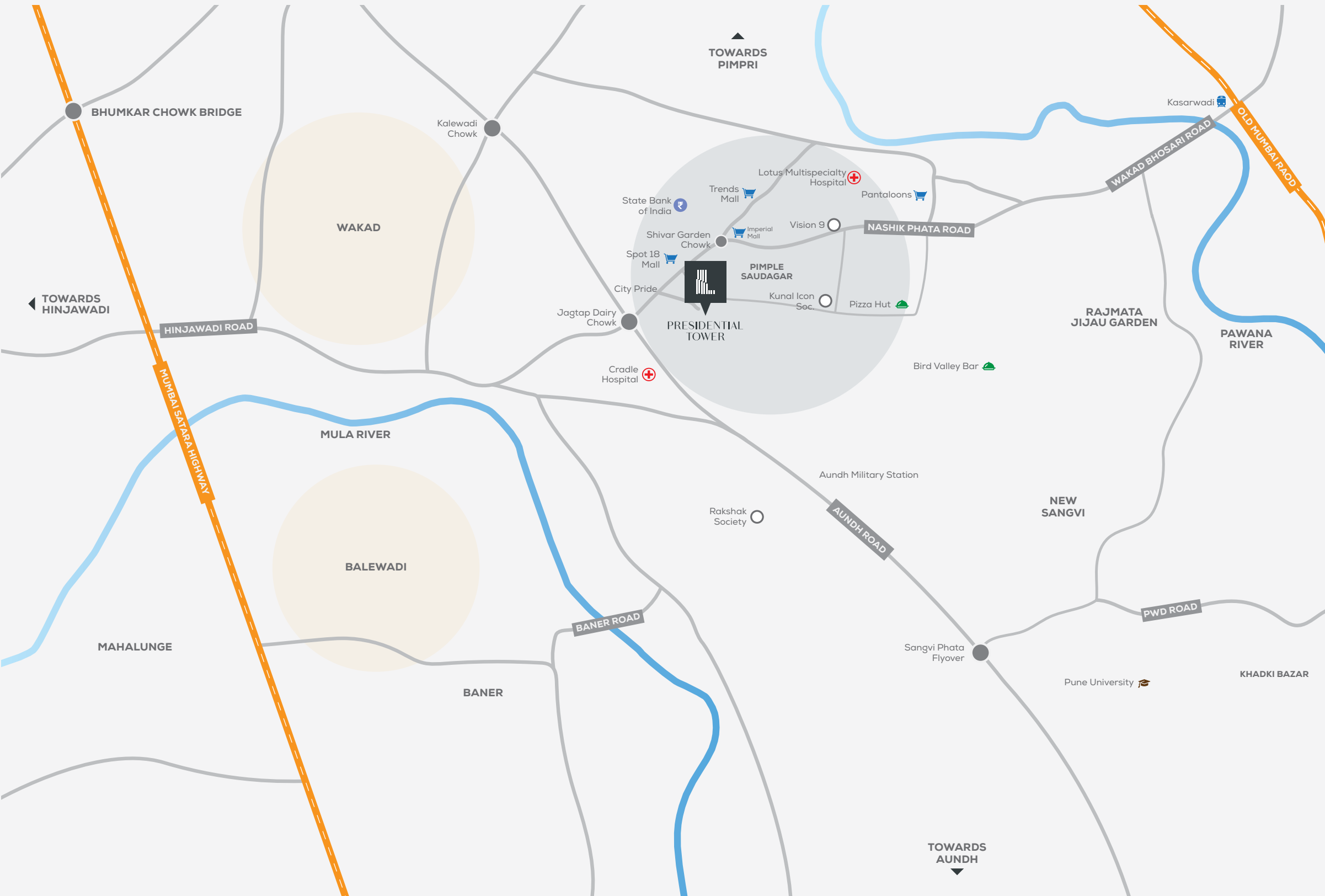
HINJAWADI PHASE I - 8.3 KM

PUNE UNIVERSITY - 9.7 KM

MUMBAI-PUNE EXPRESSWAY - 12.0 KM



PRESIDENTIAL TOWER: THE EPICENTRE OF GREATNESS



SCHOOLS & COLLEGES

- GK Gurukul – 2.3 Km
- Delhi Public International School- 2.4 Km
- Vibgyor Roots & Rise School- 2.5 Km
- The Orchids International School- 5.5 Km
- Vibgyor International School, Balewadi – 6.8 Km
- Symbiosis Skills & Professional University – 13 Km

HOSPITALS

- JeevanJyoti Super Speciality Hospital, Pimple Saudagar – 1.1 Km
- Lotus Hospital – 2.1 Km
- Jupiter Hospital, Baner – 5.7 Km
- Aditya Birla Hospital – 6.5 Km

MALLS & MARKET

- Spot 18 – 900 Mtr
- Vision 9, Pimple Saudagar – 2.6 Km
- Imperial Mall, Pimple Saudagar – 2.5 km
- Phoenix Market City, Wakad – 5.5 km
- Westend mall , Aundh – 5.7 Km

HOSPITALITY

- 18 Degrees, Pimple Saudagar – 750 mm
- Balewadi Highstreet – 4.1 Km
- Sayaji Hotel, Wakad- 5 Km
- Area 51, Baner – 7 Km



THE MAKERS OF PRESIDENTIAL TOWER

ABOUT GOVIND GROUP

Focusing on creating a unique client experience at each project, Govind Group has reimagined community living through its residential landmarks in and around PCMC. While timely delivery and great quality are the Group's non-negotiable values, the Group's emphasis is on expanding its possibilities to deliver additional benefits to the clients, every single time.

ABOUT RAVIRAJ REALTY

Raviraj Realty started its journey in construction and land development in the year 1994. Ever since, the company has grown from strength to strength. Today, Raviraj Realty stands as a trusted name in Pune's construction industry with numerous successful projects behind them.

The success mantra that we have adopted over the years has been – "Value for Money". Backed by a highly futuristic vision, Raviraj Realty has delivered households based on customer requirements at reasonable and reality based prices.

With a track record of delivering homes on time without compromising on quality, Raviraj Realty has become a reliable and bankable brand. Till now, the brand has successfully completed 51+ residential as well as commercial projects. While doing so, the company has completed 15 million sq.ft. of construction.



RAVIRAJ REALTY
We Build Benchmark



GOVIND
- GROUP -

Corporate Address

Office No. 1-5, Second Floor, Millennium Star,
Dhole Patil Road, Next to Ruby Hall, Pune-411001.


Site Address

Near Match Point,
Pimple Saudagar

Contact us: 9922404120 / 30

sales@presidentialetower.in

www.presidentialetower.in

 MahaRERA No.: P52100047282 | www.maharera.mahaonline.gov.in

DISCLAIMER : The materials contained in this brochure should not be considered an offer and are solely of an informational nature. The references, images, advertising or declarations made herein are informational only, and not to be interpreted in any other manner. The developer (Govind Raviraj Developers LLP and/or its allies and/or its subsidiaries) reserves the right to make any modifications to the materials, specifications, plans, designs and delivery of the residences advertised here without any prior notice. All of the specifications contained herein, including technical, promotional, related to images or of any other nature are the property of Govind Raviraj Developers LLP and/or its allies and/or its subsidiaries and such specifications may not be used by any person, including an individual entity, without the prior written consent of Govind Raviraj Developers LLP and/or its allies and/or its subsidiaries.