

Serenity
is not a visitor, but a
**FOREVER
-FRIEND-**



2 & 3 BHK EXOTIC HOMES
PUNAWALE

RERA NO.-
P52100020135

2 BHK



Odd Floor Terrace

Even Floor Terrace

Siyona THE HOME OF HAPPINESS!

3 BHK



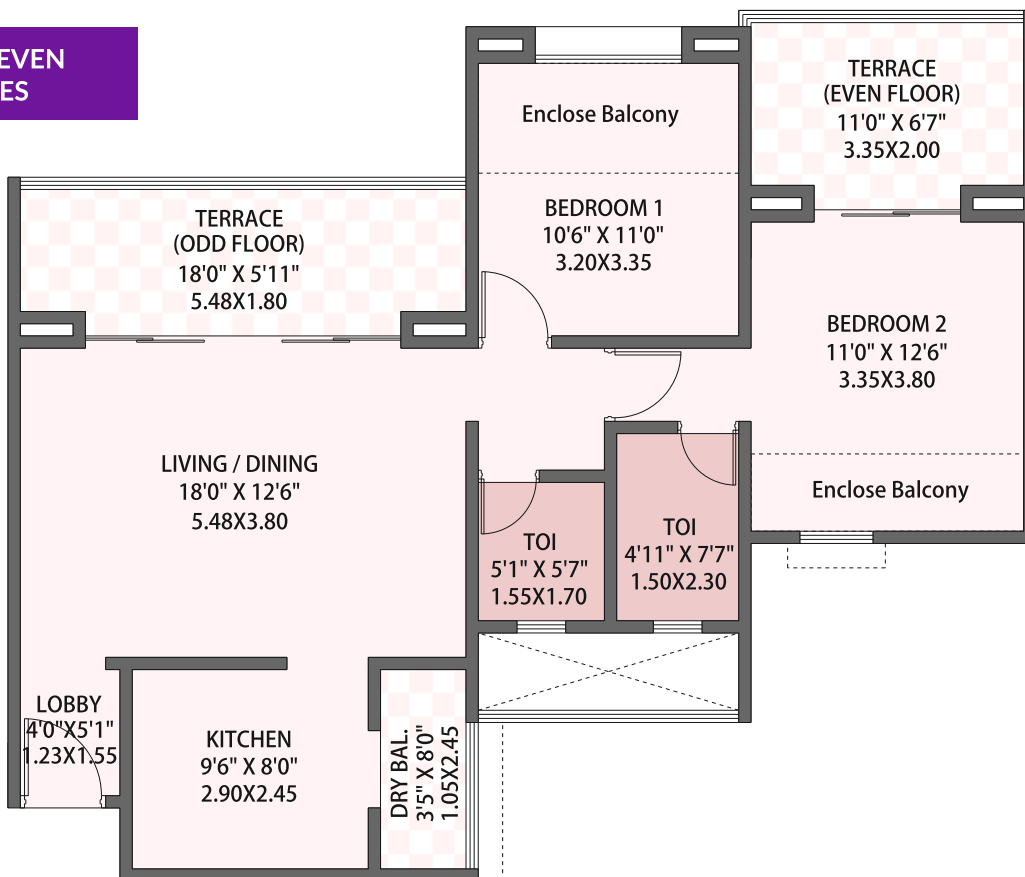
Even Floor Terrace

Odd Floor Terrace

SPECIFICATIONS

- ❖ Total vitrified flooring all over the flat
- ❖ Anti-skid flooring at terrace and toilets
- ❖ Concealed plumbing and wiring with quality fittings
- ❖ Main door, Safety door with milk and newspaper rack
- ❖ Dado tiles up to ceiling in all toilets
- ❖ Generator backup for the lighting load all over the flat
- ❖ Parallel platform with modular kitchen
- ❖ Solar Hot water for bathing in each toilet
- ❖ Intercom facility in each flat
- ❖ TV points in living room, master bedroom along with AC points in all bedrooms
- ❖ Telephone points in all bedrooms and living room
- ❖ Wall hung European water closet (commode) in all toilets
- ❖ Video door phone with bell
- ❖ SS railing with toughened glass for terrace
- ❖ Aluminum powder coated sliding/openable windows with safety grills
- ❖ Mosquito net for all windows and doors

2 BHK ODD/EVEN FLOOR HOMES



LIFESTYLE AMENITIES

- ❖ Ample open space
- ❖ Children play area
- ❖ Club house
- ❖ Guest waiting lobby
- ❖ Half basketball court
- ❖ Jogging track
- ❖ Landscaped garden
- ❖ Multipurpose hall
- ❖ Open-air amphitheatre
- ❖ Party lawn
- ❖ Skating area
- ❖ Special area for senior citizens
- ❖ Swimming pool
- ❖ Well-equipped gymnasium
- ❖ Yoga and meditation area
- ❖ Well equipped indoor play area
- ❖ Separate toddler zone with senior citizen sitting area
- ❖ 24 x 7 CCTV surveillance in parking & common areas
- ❖ Well equipped fire protection & fire alarm system for common areas

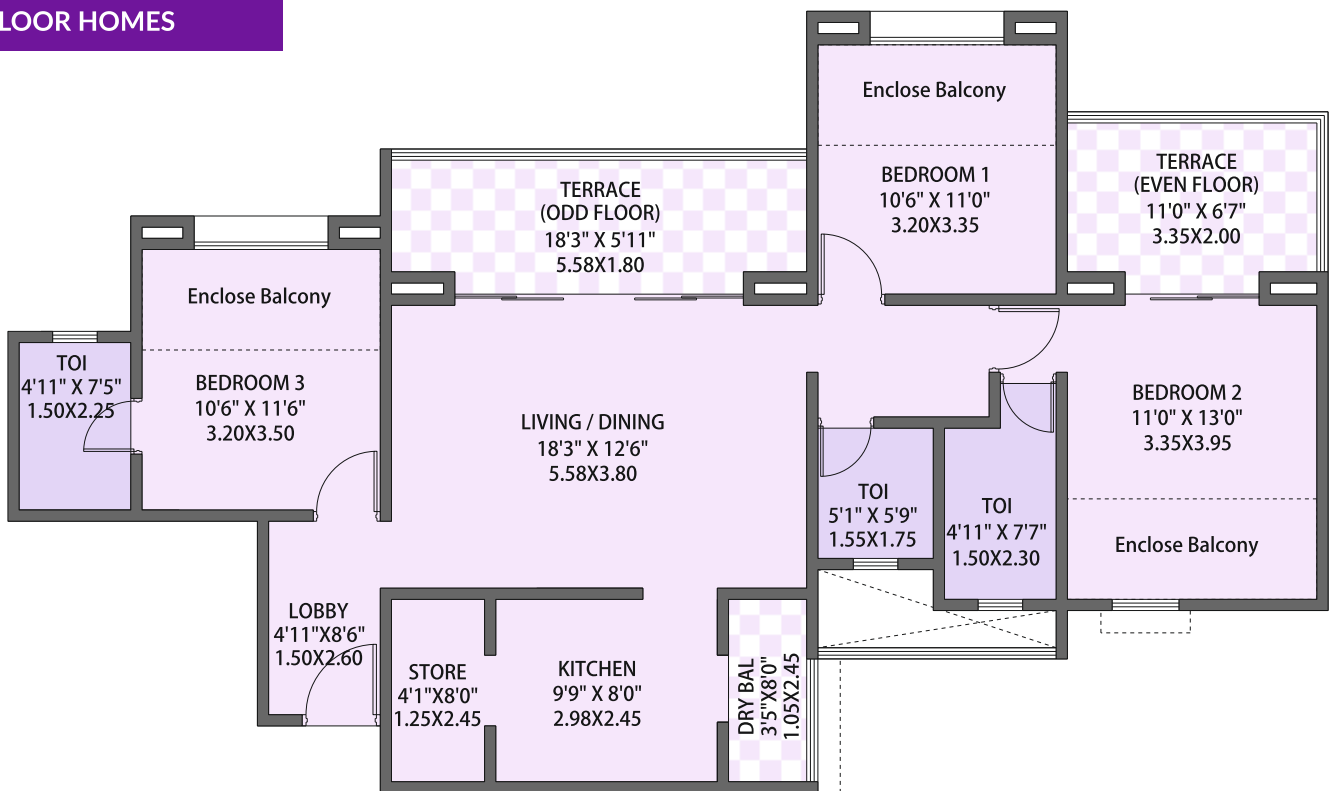
All dimensions are from unfinished to unfinished. | Currently sanctioned till 10th floor, Proposed for 22 floors.

Explore YOUR LUXURY HOME IN THE **REAL BALI** SETTING.

To the self motivated, upwardly mobile, 'always -on-the-move' urban family, true peacefulness comes only in the midst of nature's calm. The occasional weekend at the beach or in the forest or an annual vacation in the mountains barely suffice and the soul asks for more. That is why we decided to bring in a rare piece of nature's beauty right into your home. We made Siyona.

This exclusive group of residences just off Mumbai-Bengaluru highway is an oasis of the Bali ambiance. Enter Siyona and you are surrounded by majestic palms lining the roads and colourful shrubs blossoming along the pathways. The air is filled with calm and the exotic scent of the sunny tropics.

3 BHK ODD/EVEN FLOOR HOMES



SO COME, EXPLORE
A 9 ACRE TOWNSHIP OF
600+ PREMIUM HOMES!



SIYONA

2 & 3 BHK EXOTIC HOMES
PUNAWALE



ULTRA MODERN RESIDENCES





2 & 3 BHK EXOTIC HOMES PUNAWALE



RERA NO.-
P52100020135



maharera.mahaonline.gov.in

Pethkar Projects, 'SIYONA', S.No. 47, 48 & 50, Punawale, On Mumbai-Bengaluru Highway, Near Bharat Petrol Pump, PCMC - 411 033, Pune, Maharashtra, India
Call : 9764 99 5555 | mail@pethkarprojects.com | www.pethkarprojects.com

Member of :



CREDAI
PUNE METRO