



LOCATION MAP

Educational institute

Railway station

Retail

Hospital

Office

Hotel & restaurant

Airport

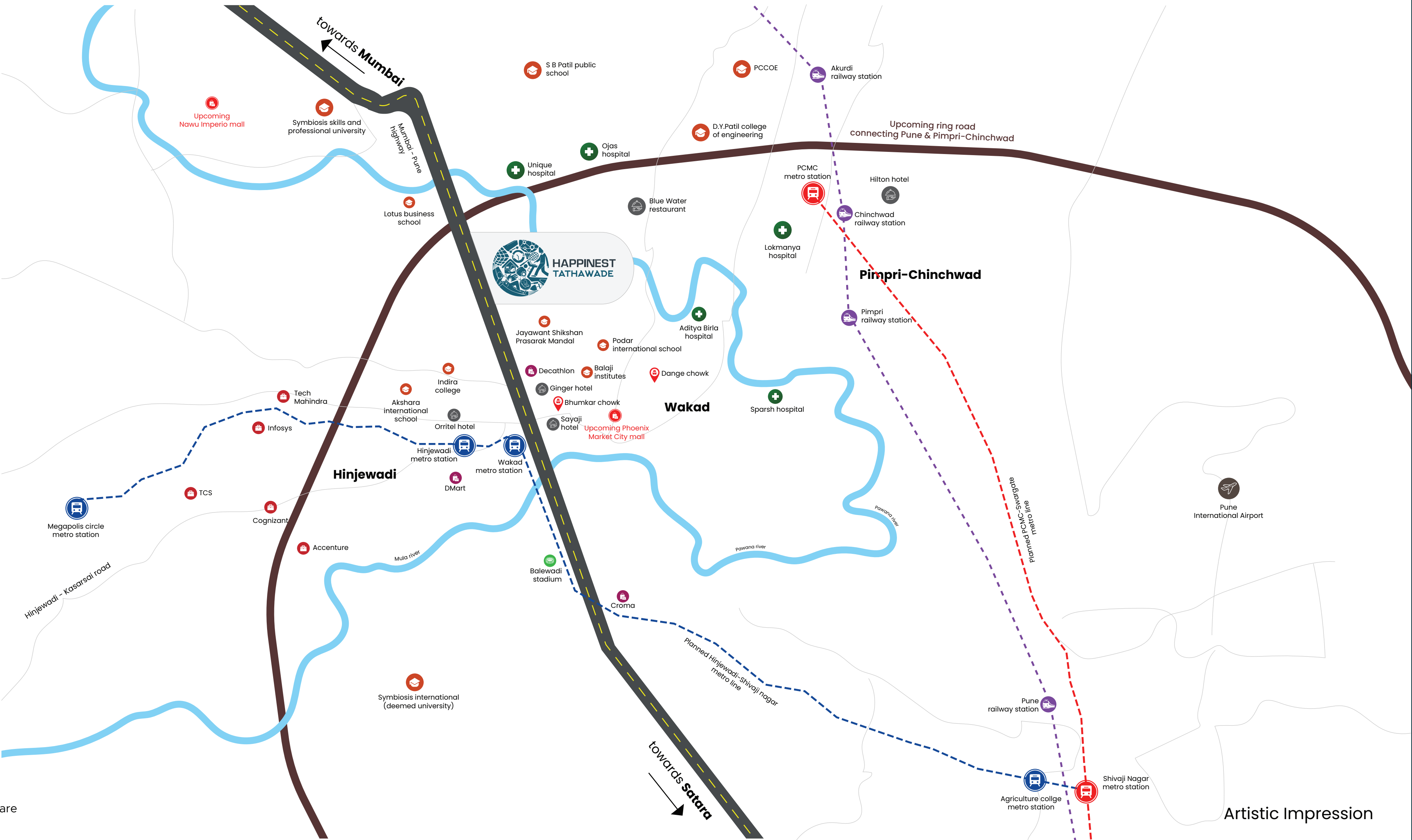
Stadium

Planned Hinjewadi-Shivaji nagar metro line

Planned PCMC-Swargate metro line

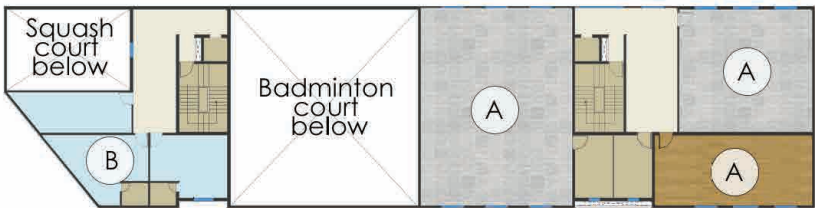
Upcoming infrastructure :

- 170 km ring road encircling Pune & Pimpri-Chinchwad
- Upcoming Phoenix mall
- Upcoming Nawu mall



[‡]Map not to scale. Landmarks and upcoming developments are indicative and as per data available in the public domain

MASTER PLAN



1st FLOOR OF FITNESS CENTER
(CLUB HOUSE) IN MLCP BUILDING



1st FLOOR OF CLUB HOUSE
IN OPEN SPACE

1. CLUB HOUSE IN OPEN SPACE

Ground Floor

- (a) Multipurpose hall with options for Party Hall, Yoga & Meditation

First Floor

- (b) Indoor games room with Table tennis table, Carrom Area cum Library, Pool game, Putting green

2. FITNESS CENTER (CLUB HOUSE) IN MLCP BUILDING

Ground Floor

- (a) Badminton court
- (b) Indoor games area
- (c) Squash court
- (d) Gym

3. GROUND RG OPEN SPACE

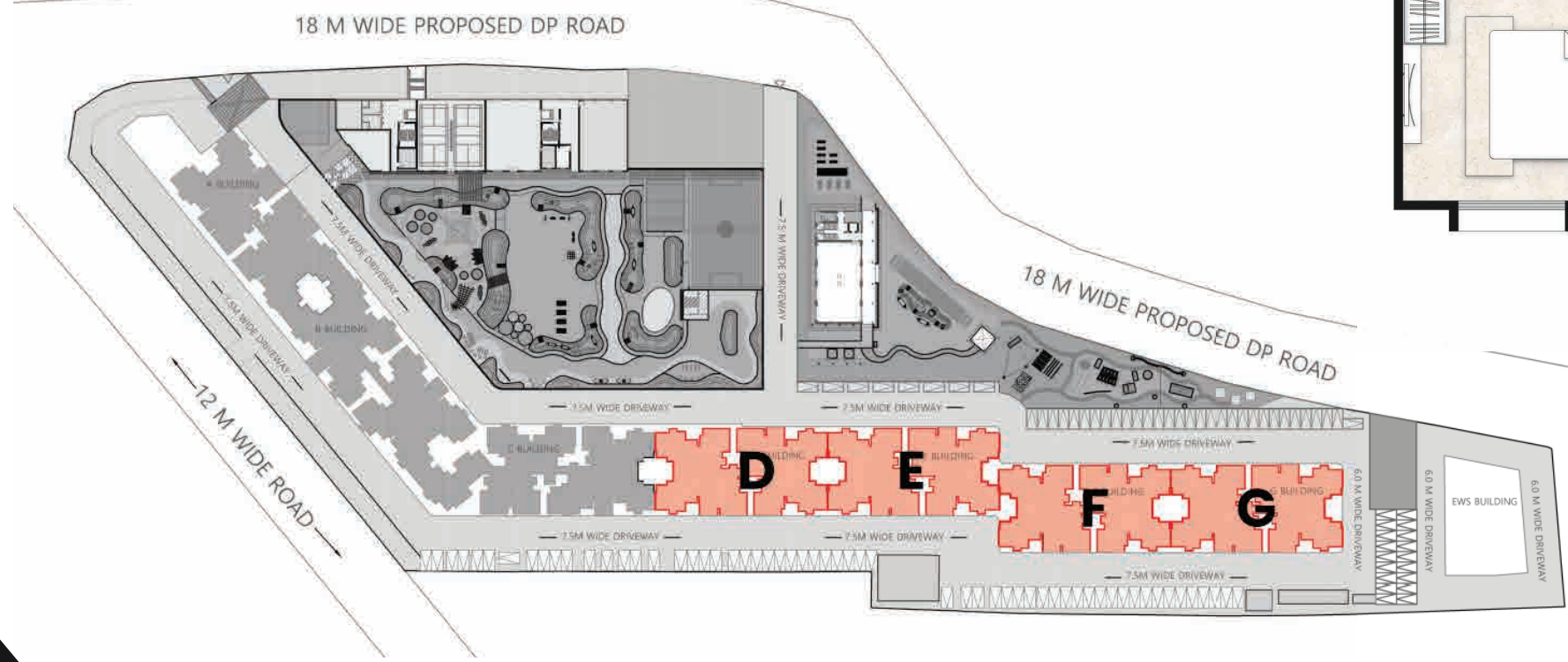
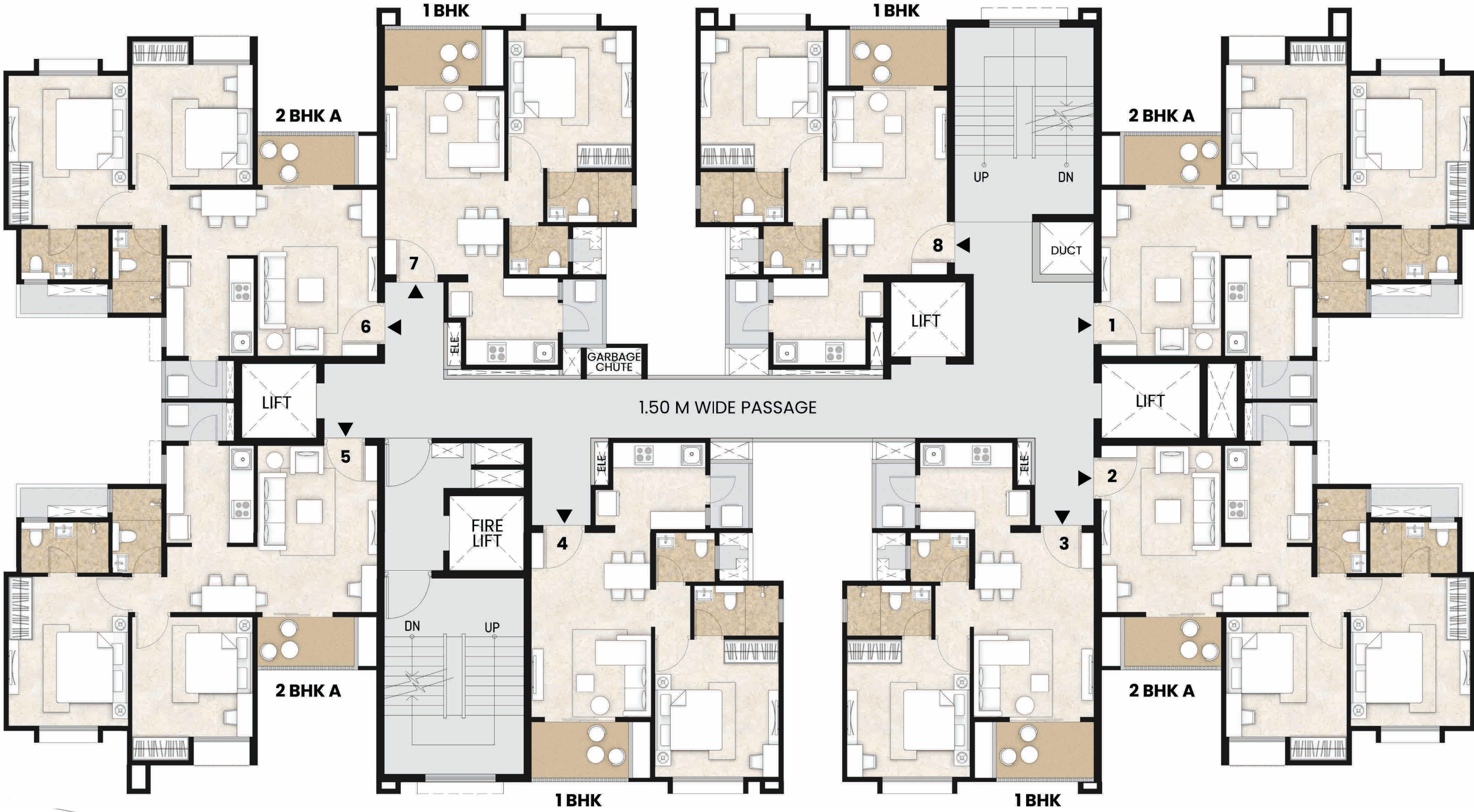
- | | |
|-------------------------------|---------------------|
| (a) Organic farm | (n) Obstacle course |
| (b) Fruit orchard | (o) Rope walk |
| (c) Pavilion seating | (p) Ladder walk |
| (d) Forest trail | (q) Swing bridge |
| (e) Clubhouse spill over lawn | (r) Tarzan poles |
| (f) Cricket pitch | (s) Climbing planks |
| (g) Medicinal grove walk | (t) Adventure walk |
| (h) Reflexology path | (u) Balance walk |
| (i) Butterfly garden | (v) Mud walk |
| (j) Pet walk | (w) Rope bridge |
| (k) Fragrance garden | (x) Obstacle run |
| (l) Tent & camping arena | (y) Running course |
| (m) Floral walk | |

4. MLCP TOP

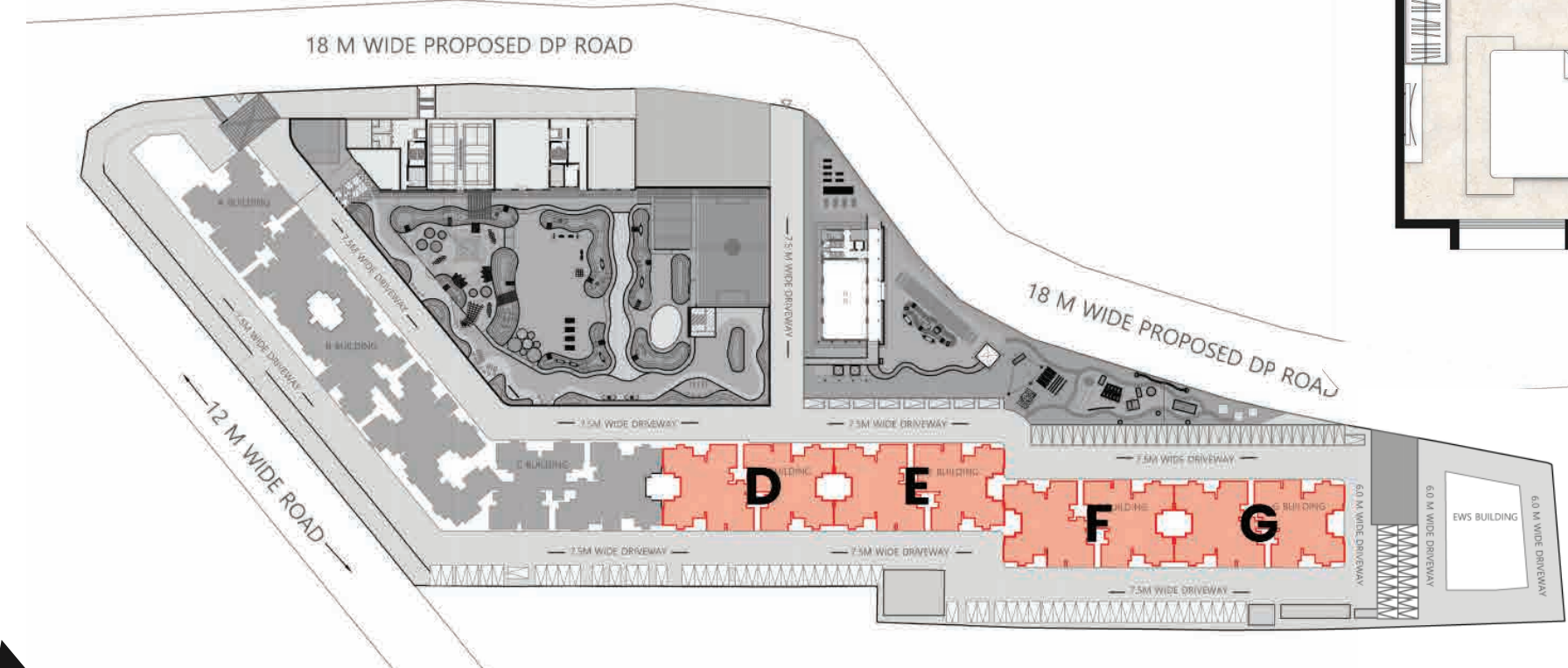
- | | | |
|-----------------------------|-------------------------------------|--------------------------------------|
| (a) Multipurpose court | (n) Skating rink | (aa) Climbing rings |
| (b) Party lawn | (o) Obstacle course | (bb) Amphitheatre |
| (c) Kids play area | (p) Meeting and event zone | (cc) Open theatre |
| (d) Meditation lawn | (q) Climbing pyramid with rope | (dd) Kids climbing & graffiti wall |
| (e) Fragrance garden | (r) Slide & wooden plank with holds | |
| (f) Informal working pods | (s) Climbing net | (A) External service provider spaces |
| (g) Active - Passive ribbon | (t) Hola hoops | (B) My Series rooms |
| (h) Leisure lawn | (u) Play wall with rings | |
| (i) Outdoor gym | (v) Trampoline | |
| (j) Reflexology path | (w) Barrel walk | |
| (k) Futsal court | (x) Wave bar with rope net | |
| (l) Kabbadi court | (y) Xylophone | |
| (m) Fitness activity wall | (z) Human-sized Rubik cube | |



TYPICAL FLOOR PLAN TOWER D, E, F & G



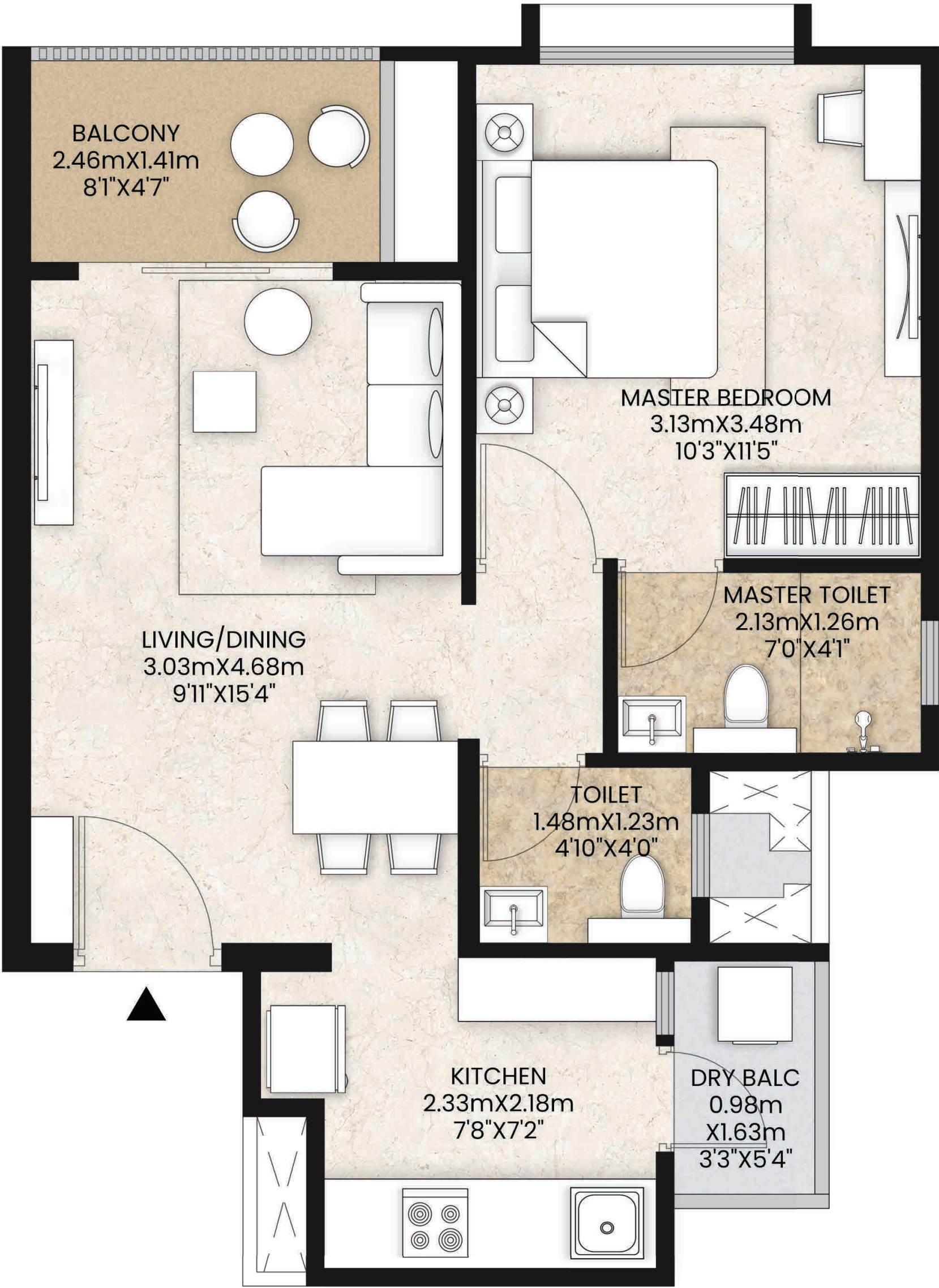
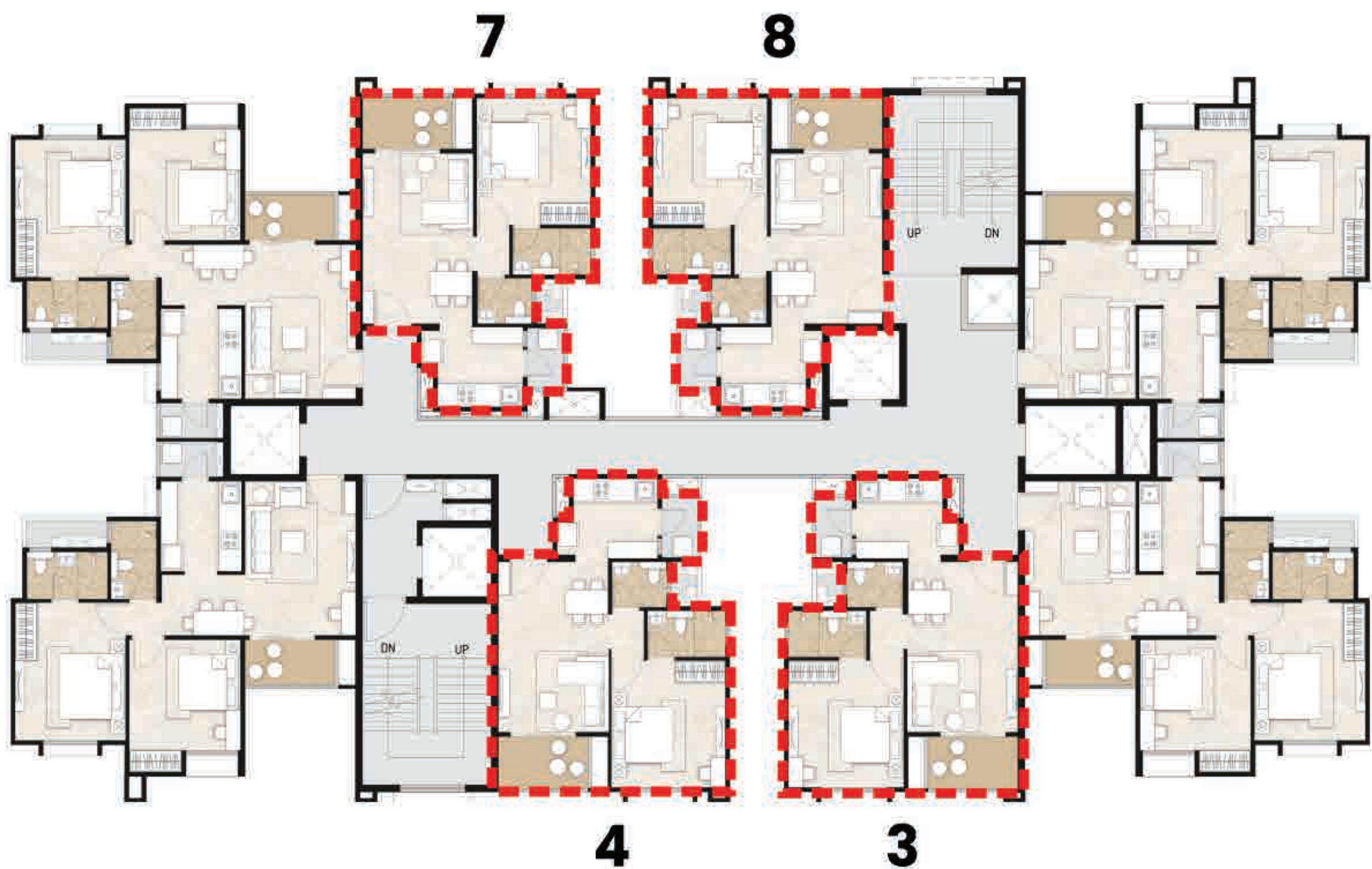
REFUGE FLOOR PLAN TOWER D, E, F & G



1 BHK

	Sq.mt.	Sq.ft.
RERA Carpet Area	38.62	415.71
Balcony	3.45	37.13
Dry Balcony	1.60	17.19
Aggregate Area^{>}	43.67	470.02

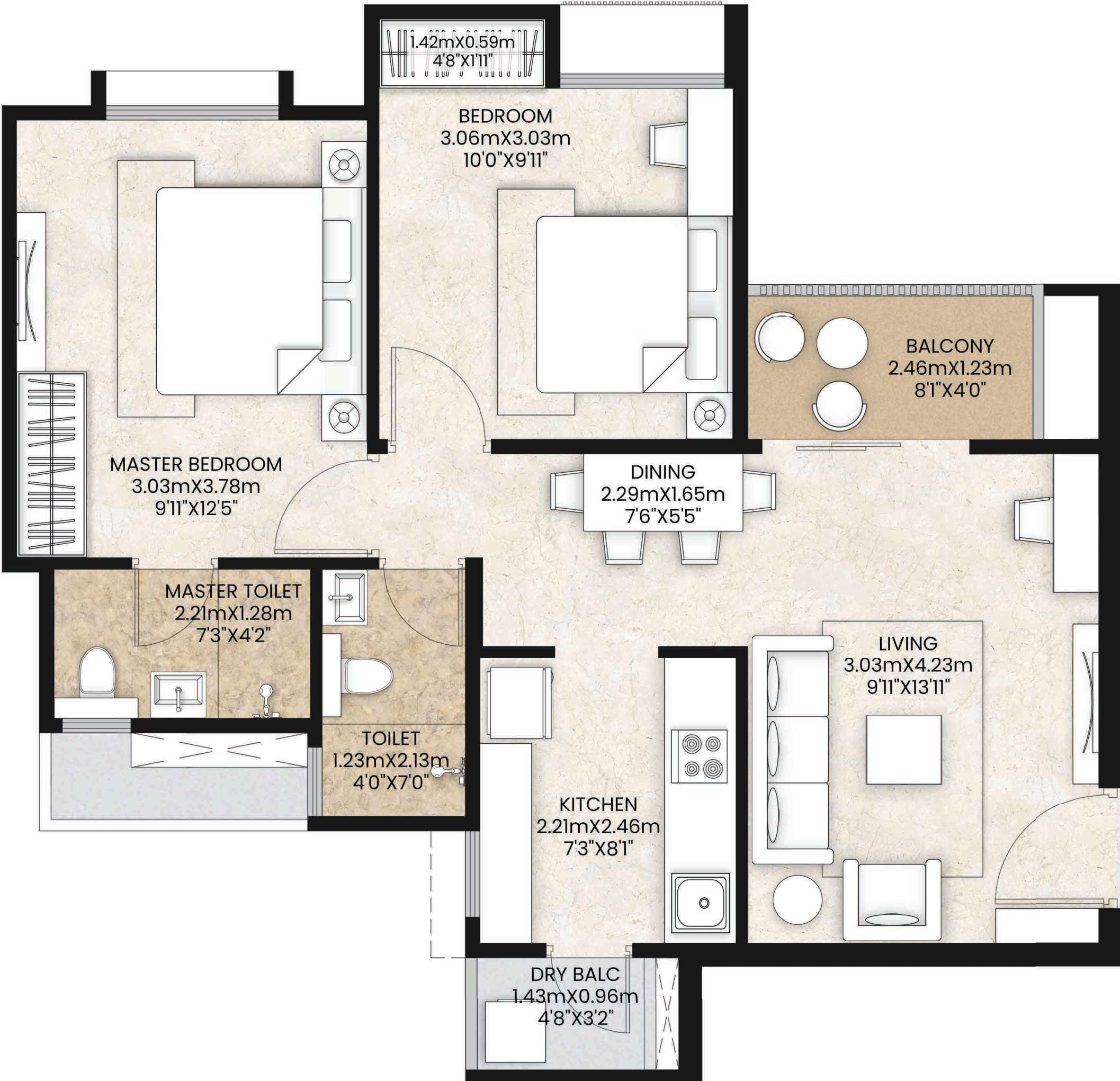
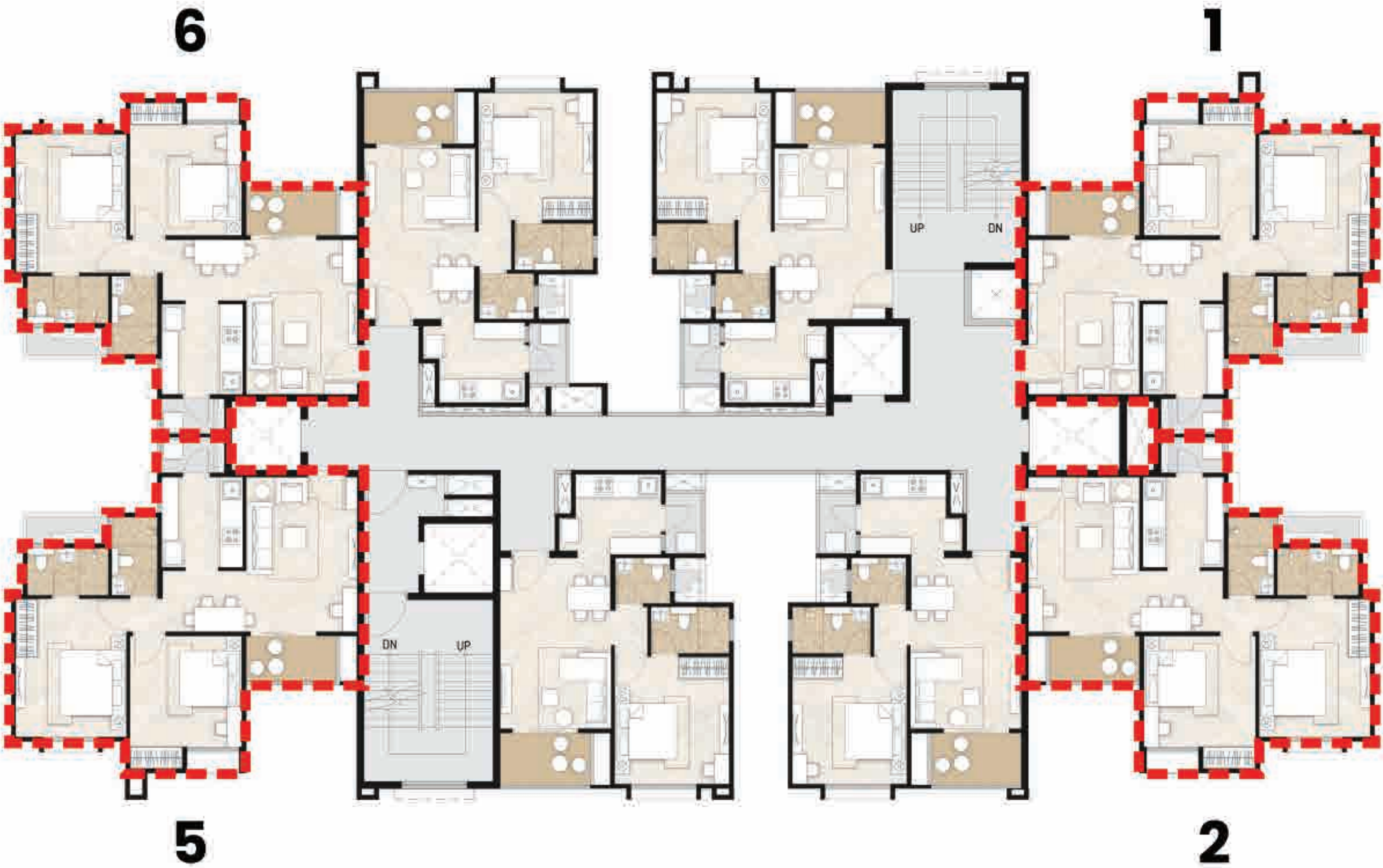
[>]Aggregate Area includes RERA Carpet Area, Balcony and Dry Balcony



2 BHK A

	Sq.mt.	Sq.ft.
RERA Carpet Area	53.15	572.11
Balcony	3.02	32.51
Dry Balcony	1.37	14.70
Aggregate Area^{>}	57.54	619.32

[>]Aggregate Area includes RERA Carpet Area, Balcony and Dry Balcony





TOWER D



14th Floor
(Typical)



13th Floor
(Refuge)



12th Floor
(Typical)



11th Floor
(Typical)



10th Floor
(Typical)



9th Floor
(Typical)



8th Floor
(Refuge)

- Blue Band
- Green Band
- Yellow Band



TOWER D



7th Floor
(Typical)



6th Floor
(Typical)



5th Floor
(Typical)



4th Floor
(Typical)



3rd Floor
(Typical)



2nd Floor
(Typical)



1st Floor
(Typical)

- Blue Band
- Green Band
- Yellow Band



TOWER E



14th Floor
(Typical)



13th Floor
(Refuge)



12th Floor
(Typical)



11th Floor
(Typical)



10th Floor
(Typical)



9th Floor
(Typical)



8th Floor
(Refuge)

- Blue Band
- Green Band
- Yellow Band



TOWER E



7th Floor
(Typical)



6th Floor
(Typical)



5th Floor
(Typical)



4th Floor
(Typical)



3rd Floor
(Typical)



2nd Floor
(Typical)



1st Floor
(Typical)

- Blue Band
- Green Band
- Yellow Band



TOWER F



14th Floor
(Typical)



13th Floor
(Refuge)



12th Floor
(Typical)



11th Floor
(Typical)



10th Floor
(Typical)



9th Floor
(Typical)



8th Floor
(Refuge)

- Blue Band
- Green Band
- Yellow Band



TOWER F



7th Floor
(Typical)



6th Floor
(Typical)



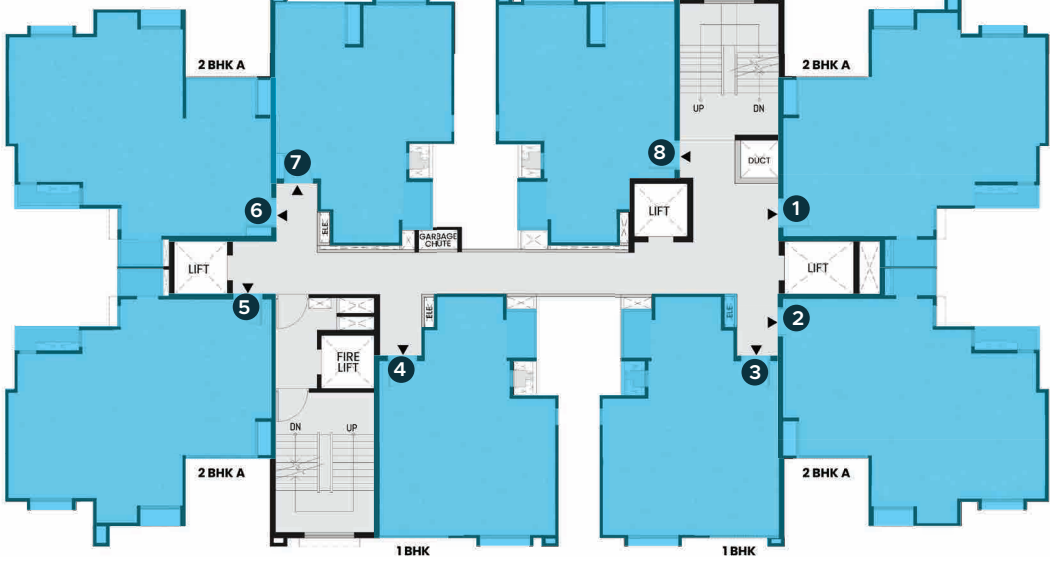
5th Floor
(Typical)



4th Floor
(Typical)





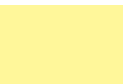
3rd Floor
(Typical)



2nd Floor
(Typical)



1st Floor
(Typical)

-  Blue Band
-  Green Band
-  Yellow Band



TOWER G



14th Floor
(Typical)



13th Floor
(Refuge)



12th Floor
(Typical)



11th Floor
(Typical)



10th Floor
(Typical)



9th Floor
(Typical)



8th Floor
(Refuge)

- Blue Band
- Green Band
- Yellow Band



TOWER G



7th Floor
(Typical)



6th Floor
(Typical)



5th Floor
(Typical)



4th Floor
(Typical)



3rd Floor
(Typical)



2nd Floor
(Typical)



1st Floor
(Typical)

- Blue Band
- Green Band
- Yellow Band



Artistic Impression



Artistic Impression



Artistic Impression



Mahindra[®] LIFESPACES

MAHARERA registration No. **P52100028049**.
For more details visit <http://maharera.mahaonline.gov.in>.

Site address: Happinest Tathawade, Besides MTU, Opposite HP Petrol Pump,
Pune-Mumbai Highway, Jeevan Nagar, Tathawade, Pune-411033

Corporate Office:
Mahindra Towers, 5th Floor, Dr. G. M. Bhosale Marg,
Worli, Mumbai 400 018, India

*T&Cs apply. The Project "Happinest Tathawade Phase-1" is registered under the provisions of the RERA Act and Rules thereunder having MahaRERA registration No. **P52100028049** dated 27/01/2021 valid up to 31/07/2026 available on <http://maharera.mahaonline.gov.in>. The Project is being developed by Mahindra Lifespace Developers Limited ("MLDL") in a phase-wise manner. The above images shown are artist's impressions and stock images for representation purpose only. The official website of the company is <https://www.mahindralifespaces.com/>*