

apostrophe^o
HINJAWADI



Intuitively designed around just one thing
sublime experiences



apostrophe^o
HINJAWADI

A beautiful minimalist lifestyle awaits

A lifestyle cultivated with detailed perfection in grace and style, refined with distinct experiences. Live a lifestyle that embraces beauty with ease and elegance.

We bring the finest to you. Where the foundation lay in excellence and the architecture is bred from modernism. Discover a lifetime of opulence that embodies the true essence of a contemporary lifestyle.





Architectural rendition



A dream and a passion. A unique story.



Stride into an extraordinary city-centred verdant escapade and watch your fantasies come to life. Let the chic debonair of Apostrophe Hinjawadi inspire your daydreams and pamper your spirits. Welcome, a paramount of modern indulgence in a burgeoning neighbourhood.

Positioned at a prime location in Hinjawadi, Apostrophe Hinjawadi is your home base for your daily excursions to everything of your need.

Sitting at the threshold of Hinjawadi, a truly cosmopolitan neighbourhood. Apostrophe Hinjawadi exudes a sense of intimate community setting in an ideal location, wherein intuitive design converges upon modern convenience.

Designed astutely, these 2 BHK apartments offer a stunning and outstanding lifestyle in the vivacious setting of Hinjawadi. Here, life is impeccably moulded by great taste, graceful aesthetics, and supreme specifications.

apostrophe
HINJAWADI



Iconic details, transparencies and lights,
grey, white, a harmony of forms.



Invitingly striking, with and elegant,
versatile linear design
that gives this project its
true uniqueness.

apostrophe^o
HINJAWADI

Apostrophe Legacy

Driven by the passion for delivering boutique residences of exceptional standards, Apostrophe is an address that redefines modern-day living standards. A mid-segment development in Moshi, Wakad and Hinjawadi, brand Apostrophe is well-known for its astounding smart city homes, contemporary architectural design, with world-class facilities.

With Apostrophe Hinjawadi, we have successfully espoused an innovative way of living without compromising on the tranquillity of the living space.

With residences that offer an unmatched lifestyle in the city's beating metropolitan hubs, we aim to make an exclusive lifestyle statement where contemporary living beckons.

Designed to uphold the legacy of Kasturi's award-winning space-planning, path-breaking technology and exclusivity for details, Apostrophe is pristine in every way.

apostrophe

HINJAWADI

● CLUBHOUSE
(FUTURE DEVELOPMENT)

● TOWER-A
(FUTURE DEVELOPMENT)

● TOWER-B
(FUTURE DEVELOPMENT)

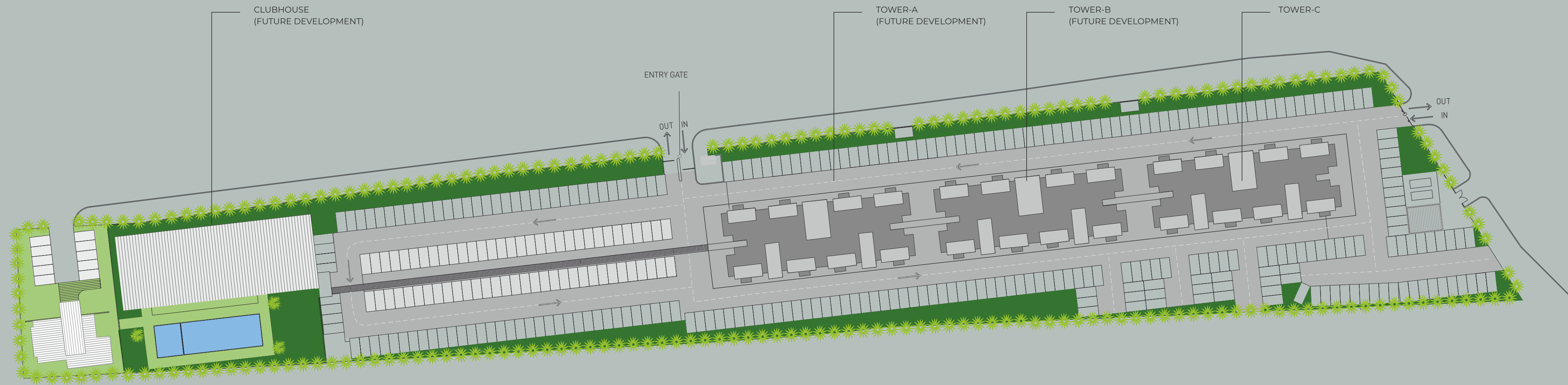
● TOWER-C



Architectural rendition.

apostrophe^o

HINJAWADI



Project layout not scale. For representational purpose only.

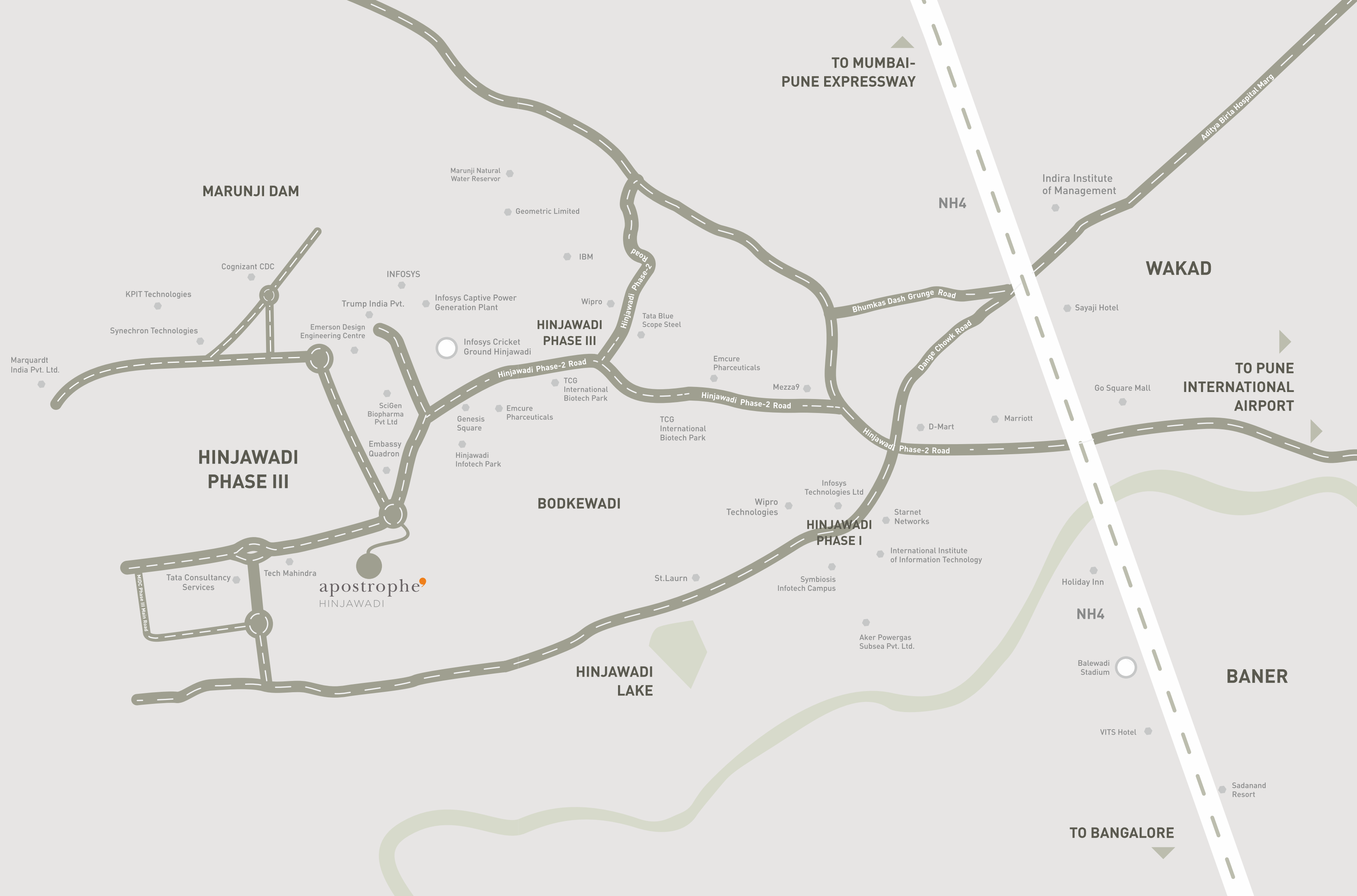
apostrophe

HINJAWADI

Apostrophe Hinjawadi is strategically positioned in the most prominent western suburb of Pune - Hinjawadi Phase -III, best suited for the corporate ascent.

Comfortably nestled within proximity to global IT Giants offers its discerning residents a life resplendent like none other.

A self-sufficient community complete with essential amenities and services such as offices, schools, hospitals, entertainment centres, all within a short distance of your home at Apostrophe Hinjawadi, ensures you lead a perfectly balanced life, at work and home.





Distinct sophistication yet simple design.

apostrophe

HINJAWADI



Architectural renditions.

It is derived from an inclination to provide the perfect balance between an intelligent lifestyle and elegant living spaces.

Modern amenities abound, Apostrophe heralds an array of unprecedented extravagance. Come home to a life that offers a contemporary urban sanctuary within Hinjawadi's most distinguished neighbourhood.

Experience an elaborate affair of sumptuousness in a wonderfully curated lifestyle.

An architectural rendering of a modern living and dining area. The living room features a large wooden TV unit with a white base, a dark wood sideboard, and a yellow armchair. The dining area has a wooden table with four chairs, a black pendant light, and a mirror. The space is lit with warm, ambient lighting.

Not the where, but the how,
It's how you live. That's what's here.

apostrophe^o
HINJAWADI

Elevated glamour and distinction are within your reach at the modern living space of Apostrophe. Spaces built around you and just for you. Heighten your senses within the comfort of a spacious interior, and demand a lifestyle that reflects the very essence of your personality and not the other way around.

Designed inspired by possibilities and manifested along with a passion for difference across the globe. The elegant layout of Apostrophe accentuates the contemporary living space not just by how it looks but also by how it makes you feel.

Hours were spent meticulously simplifying the design of each space created. Beautifully considered open plan spaces designed with simple, clean lines and minimum walls ensure free-flowing spaces without compromising privacy. We adhere to a simple philosophy – Good design is about making a connection. Following this ideology, every element is built to personalise while making your experience more comfortable, joyous, fulfilling, and above all, inspiring you to make a difference.



Architectural rendition.

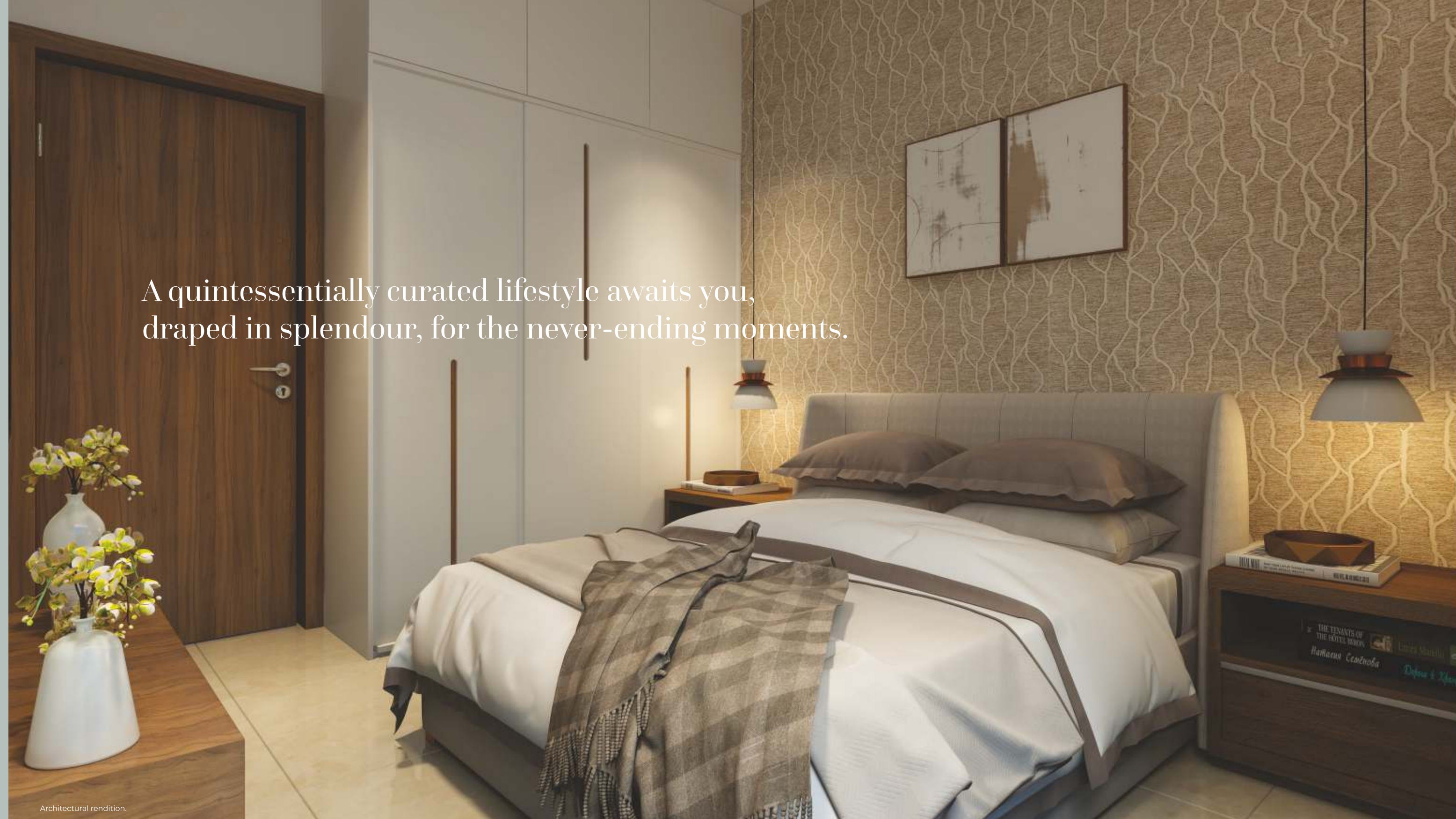
apostrophe^o

HINJAWADI

Details are fundamental to the character and personality of a space. The clever use of space and light means coming home to Apostrophe, indeed coming home - relax, recharge and rejuvenate in your haven from the outside world. The apartments have been designed to encourage an elegant harmony, with stairs that are always comfortable to climb, louvred bathroom doors that allow for ventilation, all the while lending a unique character to your home.

Every detail at Apostrophe Hinjawadi has been designed with utmost perfection, whether it is the admirable design of the three majestic towers or the refined and elegant 2 BHK homes that are open from three sides.

The top-notch apartment specifications such as VRV air-conditioning and the inclusion of innovatively designed amenities accentuate the residence's appeal and the comfort it provides, delivering a sophisticated yet inspiring living experience.



A quintessentially curated lifestyle awaits you,
draped in splendour, for the never-ending moments.

Architectural rendition.

apostrophe^o
HINJAWADI

A straightforward yet fundamentally powerful philosophy drives us; to improve the quality of life by delivering a space that most resembles you.

To inspire & impress, to encourage you to bring together the different elements that best reflects a unique personality: the one you have in you.

apostrophe^o

HINJAWADI

An elegant space in itself, the Apostrophe Hinjawadi makes a bold statement, highlighting your taste and style. Every home is designed to make intuitive use of space. These residences are privy to an exquisite panoramic view of the city.

The apartment's full height windows with the Panoramic view seamlessly stirs the aesthetic finesse in the natural setup, offering an extraordinary modern lifestyle.



apostrophe^o

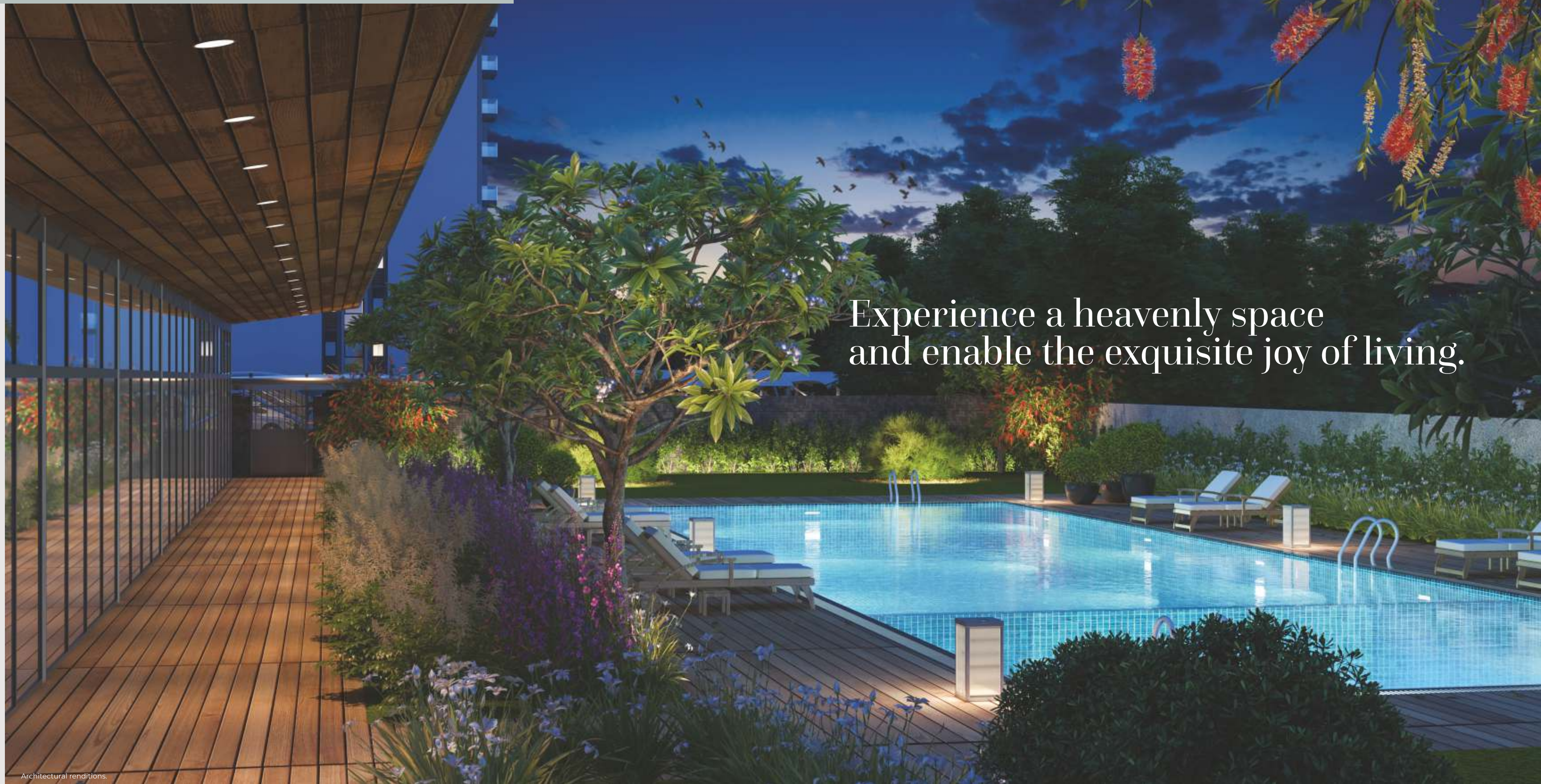
HINJAWADI

Come home to Apostrophe Hinjawadi to bask in tranquillity reminiscent of an exotic adventure. As you venture across the many activity areas, you will discover myriad amenities that imbue everyday life with a touch of the extraordinary.

Revel in expansive grounds with luxuriant gardens and a wealth of facilities providing recreation for all in the family, whether quiet contemplation or active pursuits you seek.

Designed to surpass expectations, The Recreational Club offers a haven of soulful relaxation with a playful energy twist.

Be it family time or me-time; good times await at Apostrophe Hinjawadi.



Experience a heavenly space
and enable the exquisite joy of living.

Architectural renditions.



apostrophe^o

HINJAWADI

THOUGHTFULLY CURATED AMENITIES

CLUB HOUSE WITH RECREATIONAL FACILITIES

STATE OF THE ART GYMNASIUM AND SWIMMING POOL

RECREATION ZONE - TABLE TENNIS, CAROM TABLE AND FUSS BALL

CHILDREN'S PLAY AREA WITH CHILD-FRIENDLY EQUIPMENT

CO-WORKING SPACES FOR WORK FROM HOME CONVENIENCE

COMMUNITY HALL FOR GET TOGETHER AND PARTIES

apostrophe^o

HINJAWADI

Get ready to transform your lifestyle in a way you had always desired. Apostrophe Hinjawadi boasts advanced design and specifications, better amenities, and a chance to upgrade your lifestyle tenfold.

Images for representational purpose only.

INSIDE THE HOME

- False ceiling with concealed lighting
- Furnished modular kitchens with hob, chimney and water purifier Piped gas
- Well designed utility areas for washing machines and storage
- Polished porcelain flooring
- Centrally Air-conditioned homes
- High quality anti-fungal internal paints and UV Resistant acrylic external paints
- Floor to ceiling aluminium windows for superior light and ventilation
- Veneer laminated pre-fabricated doors

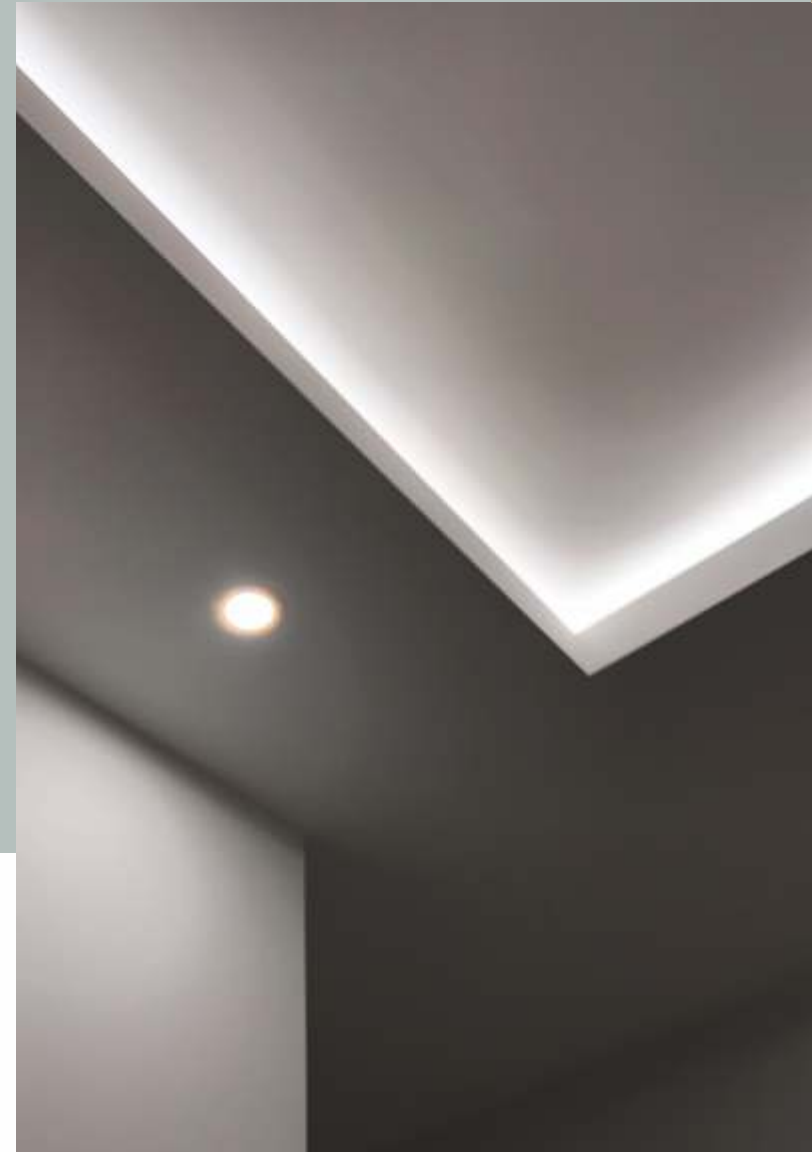


SAFETY AND SECURITY

- Access controls for each building lobby
- Video security door phone in each apartment
- Surveillance cameras in the entire project
- Fire fighting system - fireman's lift and separate fire escape staircase

COMMON SPECS

- Dry and wet garbage chute
- Two high-speed auto elevators
- Ramps for specially-abled
- Drivers and service staff washroom



INSIDE THE HOME

- False ceiling with concealed lighting
- Furnished modular kitchens with hob, chimney and water purifier Piped gas
- Well designed utility areas for washing machines and storage
- Polished porcelain flooring
- Centrally Air-conditioned homes
- High quality anti-fungal internal paints and UV Resistant acrylic external paints
- Floor to ceiling aluminium windows for

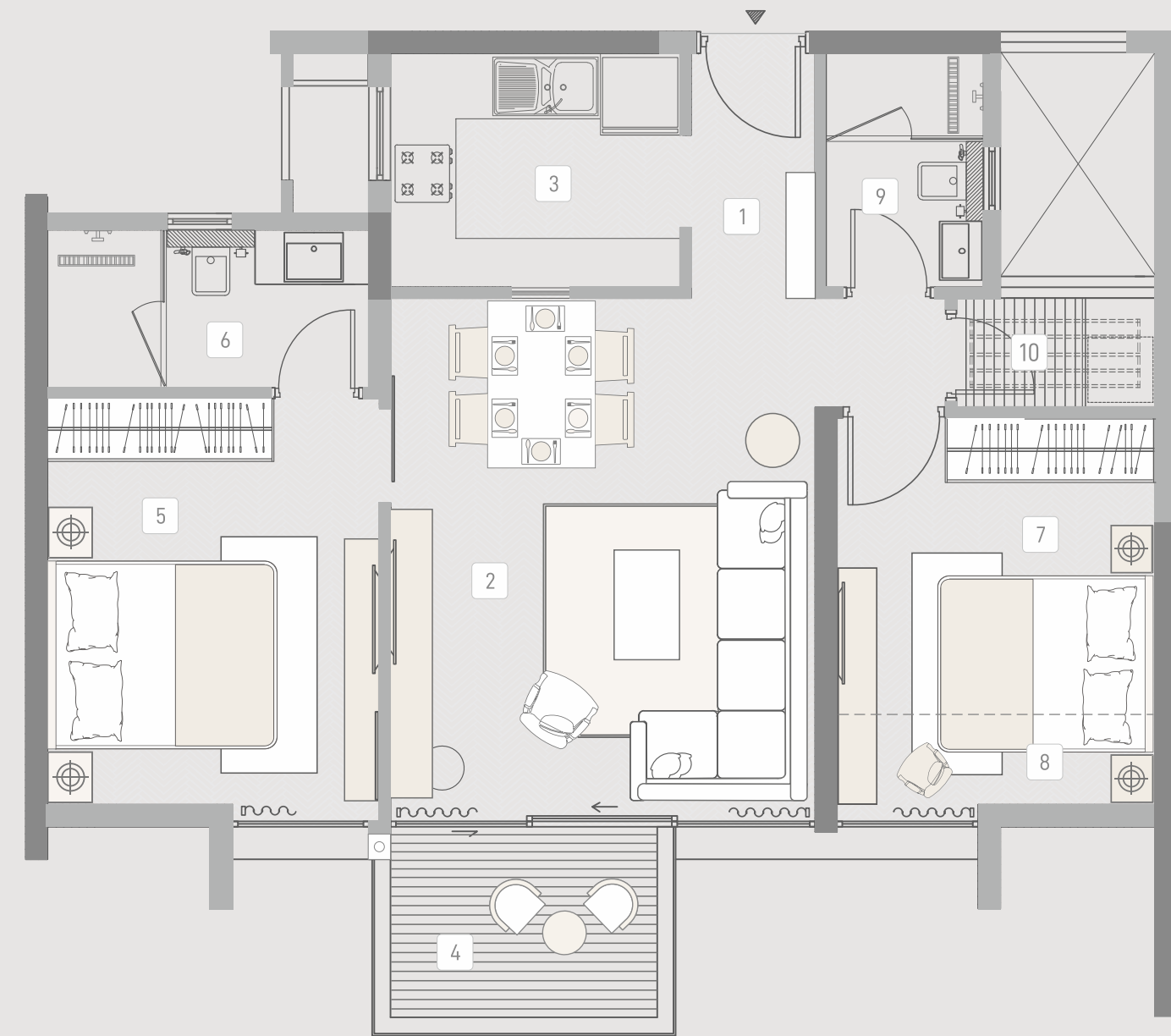


Specifications

apostrophe^o

HINJAWADI

TYPICAL APARTMENT PLAN

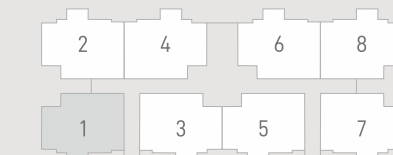


- 1 Lobby 1.14 x 2.25 meter
- 2 Living/Dinning 3.90 x 4.75 meter
- 3 Kitchen 2.66 x 2.15 meter
- 4 Balcony 2.45 x 1.50 meter
- 5 Master Bedroom 3.05 x 3.73 meter

- 6 Master Toilet 2.95 x 1.45 meter
- 7 Bedroom Two 2.90 x 2.75 meter
- 8 Enclosed Balcony 3.10 x 1.00 meter
- 9 Toilet Two 1.45 x 2.15 meter
- 10 Dry Balcony 1.80 x 1.00 meter

Carpent Area (in Sq.Mtr.)

Flat Area	Balcony / Terrace
59.65	6.24



*Area mentioned above is approximate carpet area as per RERA





Often deemed as one of the finest luxury real estate brands in Pune, Kasturi Housing is a name that promises nothing but the very best. Founded in 1999, it has successfully delivered over 2 million square feet of prime real estate and is currently developing another 2 million square feet for residential purposes. Our portfolio comprises highly luxurious and mid-segment living spaces and commercial developments such as IT buildings and built-to-suit workspaces.

Our landmark projects include:

THE BALMORAL ESTATE

Tucked amidst the swanky and sophisticated location of Baner, Pune, The Balmoral Estate is a collection of high-end luxury residences that now command the highest rate in western Pune and the highest rent per square foot in Pune.

ZERO-ONE

Home to Pune's passport office, leading IT companies, and numerous select F&B outlets – Zero-one is the one-stop destination that allows you to enjoy the benefits of an exclusive commercial & IT zone.

APOSTROPHE

A mid-segment residential development in Wakad, Pune, Apostrophe is well-known for its futuristic and international lifestyle. Decked with superior detailing and high-quality finishes, Apostrophe is pristine in every way.

EON HOMES

Absolute Best in Hinjawadi, Now Awarded India's Best. Set on a verdant 22-acre campus at one of the most scenic locations in Hinjawadi, Phase III. This is a well-planned community of 12 towers, with spacious and contemporarily designed apartments on each floor.



AWARDS & RECOGNITION

Celebrating our noteworthy accomplishments in the real estate sector, the Realty Plus Conclave and Excellence Awards and the International Property Awards honoured Kasturi's capability and competence of providing the finest properties to our customers in the years 2017 and 2018, respectively. These awards are the testimonials of our hard work and our aim to always be the best.





www.kasturi.com | T : +91-20-4077 9999

SITE ADDRESS

R/3/2 PART, NEAR TECH MAHINDRA, HINJAWADI PHASE III,
PUNE – 411 057

This project has been registered via MahaRERA registration number P52100031595 (TOWER-C)
and the details are available on the website <https://maharera.mahaonline.gov.in> under registered projects.