

FOR CHARTER

NURI



A FRESH TAKE ON EXPLORATION

Nuri is the first model in a new generation of the RJ range, and it is the innovation in her refreshing and spacious design by Francesco Paszkowski that sets her apart.

Nuri proposes a modern spin on the explorer vessel. Her name means 'world' in Korean; suggestive of the adventures she promises. Nuri offers several social hubs, throughout, both indoors and outdoors. While Nuri can certainly take you away from it all, with her state-of-the-art Starlink internet you can stay connected wherever you are in the world. Guests will find entertainment and adventure split across all three decks; from the Jacuzzi and bar on the sun deck, to two separate al-fresco dining areas and the swim platform with direct access to the sea."





KEY FEATURES

- LUXURIOUS EXPLORER YACHT
- DESIGN BY FRANCESCO PASZKOWSKI
- STABLE STEEL HULL
- VAST SUN DECK WITH JACUZZI, BAR, DINING AREA, TV AND EXERCISE EQUIPMENT
- ECO-FRIENDLY WITH CARBON OFFSETS
- AT-ANCHOR STABILIZERS
- EXTENSIVE WATER AND LAND TOYS
- STARLINK HIGH SPEED INTERNET
- 12M, 800HP CHASE BOAT
- 6M WILLIAMS JET TENDER

SPECIFICATION

BUILDER	GUESTS	LENGTH	BEAM
CANTIERE DELLE MARCHE	12 IN 5 CABINS	40.5M (132' 11")	8M (26' 3")
BUILT	CREW	DRAFT	MAX SPEED
2021	9	2.52M (8' 2")	14.5 KNOTS



ECO-CONSCIOUS CRUISING

Nuri is a pioneer in offsetting all of its carbon fuel emissions, at no extra cost to the charter, by making carbon offset payments for clean energy projects supported by RMI.



ELEGANT INTERIORS

The interiors and exteriors were designed by Francesco Paszkowski who adds a contemporary twist. Open spaces and large windows allow natural light to pour in while framing the scenic views.

Nuri's neutral furnishings create a calming atmosphere that is elegant, sophisticated and modern. Alcoves in the main salon and dining room are decorated with ornaments that reflect Nuri's story.





MAIN SALON



NURI







SKY LOUNGE



NURI



PEACE OF MIND

Up to twelve guests are accommodated in five fabulous cabins including the master suite which is on the main deck.

The master suite is bright, spacious and fitted with a king-sized bed, multiple armchairs, a daybed, a walk-in wardrobe and ensuite bathroom. The lower deck is home to the four guest cabins. The double cabins have a vanity unit, vast closet space and ensuite bathrooms. Both of the twin cabins convert to a double, offering the flexibility to suit all kinds of groups on board.







MASTER SUITE



NURI





DOUBLE GUEST CABINS

NURI



TWIN GUEST CABINS

NURI

OPEN SPACES

There's variety and choice at every turn. Nuri's outdoor spaces provide multiple areas to relax, dine and entertain.

The sun deck offers ample lounging spaces and sheltered dining as well as a newly installed Jacuzzi. Underwater exploration is made easy with direct access to the water from the large swim platform, which is where you'll start the on-water fun too, with the great selection of toys at your disposal.

If you're looking to start the day with a sun deck yoga session, spend the afternoon riding the waves, or the evening savouring the last of the rays with sundowners, Nuri offers it all for a charter experience to remember.





SUN DECK



NURI





UPPER DECK

NURI



UPPER DECK



NURI



UPPER DECK

NURI



MAIN DECK AFT



SWIM PLATFORM



NURI

FUN AND FLEXIBILITY



FJORD 41XL CHASE BOAT

More than just a tender, the Fjord 41XL chase boat is a state-of-the-art day boat offering luxury, fun and flexibility. Explore nearby shores and shallow waters in total comfort, and get where you need to be quickly too, at an impressive 38 knots.

With plenty of sunbathing space on board for relaxation the chase tender extends the opportunity for total enjoyment and exploration available as part of a Nuri yacht charter.



FJORD 41XL CHASE BOAT

NURI

“NURI’S CHASE BOAT
OPENED UP WHOLE
NEW OPPORTUNITIES
FOR US TO EXPLORE
NEARBY TOWNS AND
ISLANDS IN STYLE”





FJORD 41XL CHASE BOAT

KEY FEATURES

SEAKEEPER 3 GYROSTABILISER FOR ENHANCED COMFORT AND STABILITY AT ANCHOR

LITHIUM ION BATTERY PACK FOR PROLONGED ENJOYMENT WITHOUT POLLUTING AT ANCHOR

800HP

HYDRAULIC BATHING PLATFORM FOR EASY ACCESS TO THE WATER

LARGE DAY BED

HEAD WITH SHOWER ON BOARD





FJORD 41XL CHASE BOAT

NURI

THE TOYBOX

Whether you are a thrill seeker or a gentle cruiser, you can take to the seas to explore however suits you best. The yacht is loaded with a variety of toys for fun on and under the water.

Nuri's toys, ranging from specialist wakeboards to kids' water skis, invite all guests to share the experience. With bicycles and electric scooters on board, you can explore on land too. The adventures are limitless.

WATER TOYS

Fliteboard
2x F5s Seabobs
Sroka Wing Foil and Board
Inflatable Wing Surf Foil Board Gear
Windsurf Board and Gear
Jobe Pace Wakesurfer Board
Professional Mono Ski
Adult and Child Water Ski
2x Two Person Aquamarine Kayaks
2x Stand Up Paddle Boards
Inflatable Jobe 4 Persons Sofa
Inflatable Disc 1 Person
Inflatable Disc 3 Person
Inflatable Teak Look Custom Platform / Docking for Toys
3x Jobe Air Force Flyer
Fishing Rods for Trolling or Casting
2x SUP Red Paddle Co
Jobe Vanity Wakeboard
Jobe Knox wakeboard
Jobe Elite Wake Combo
Jobe Helmets Wetsuits and life vests assorted sizes
4x Bravo KWB 220 Paddle
Jobe Logo Series Wakeboard & Unit Bindings Sets
3x Jobe Perth
20x Sets of Snorkels and Goggles Combination
Inflatable Flamingo

TENDERS

Fjord 41xl 2023 12.15m
Williams Jet 625 - 2023

LAND TOYS & GYM EQUIPMENT

Golf Clubs, biodegradable balls, tee off matt and Inflatable Green
4x Electric Scooters
3x Trek Bicycles
Concept 2 Rowing Machine
Exercise Equipment / Free Weights





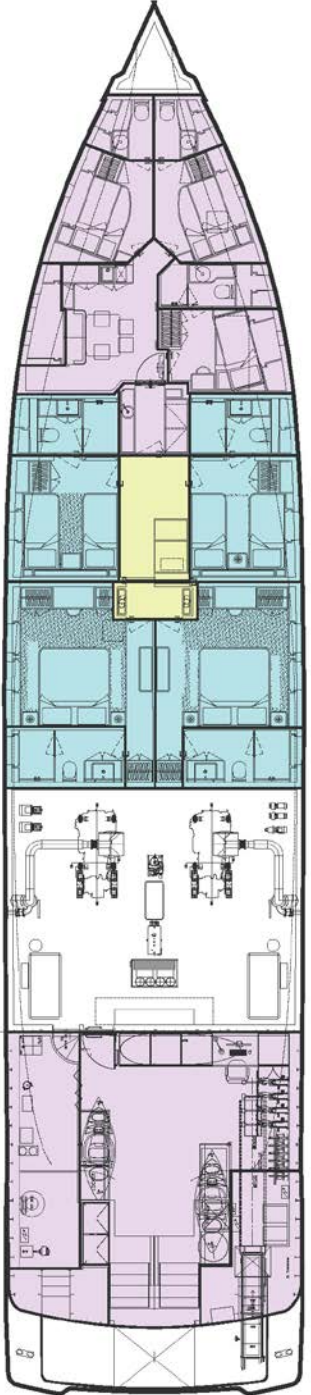
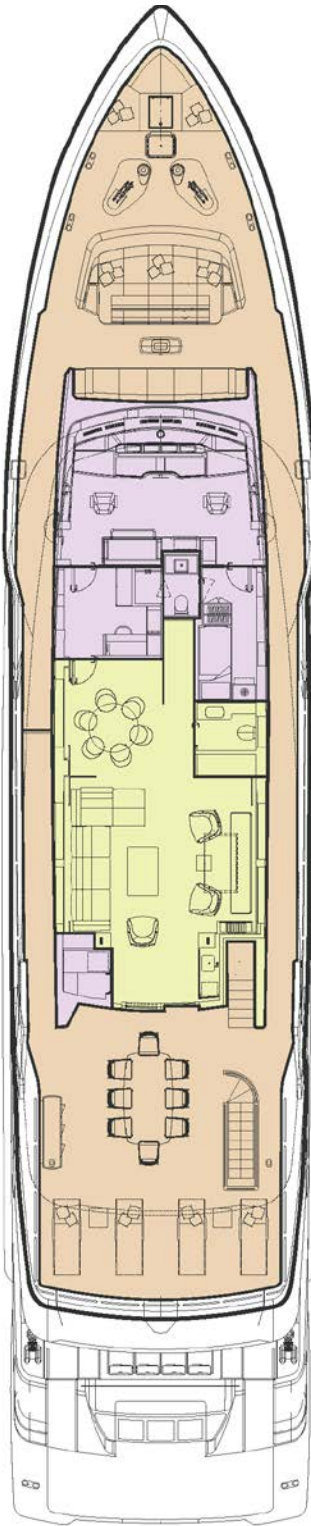
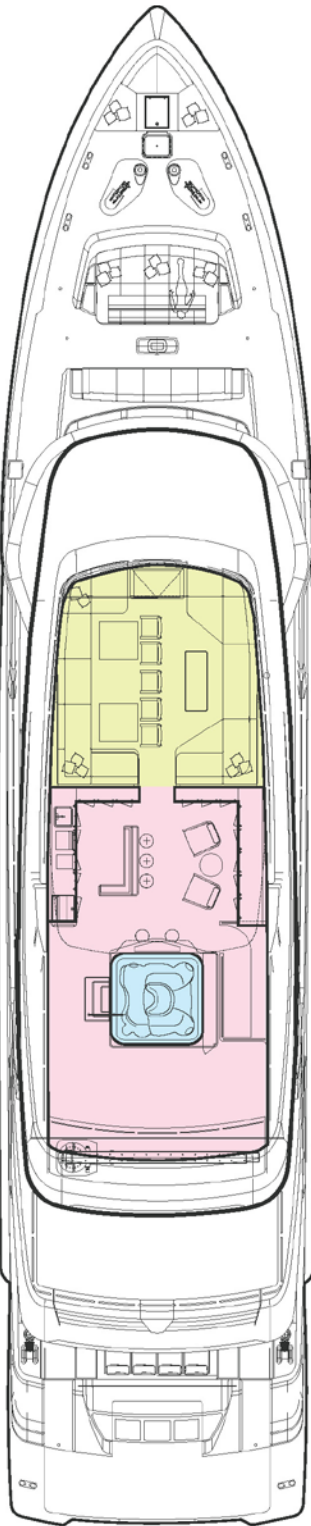


FLY DECK & UPPER DECK

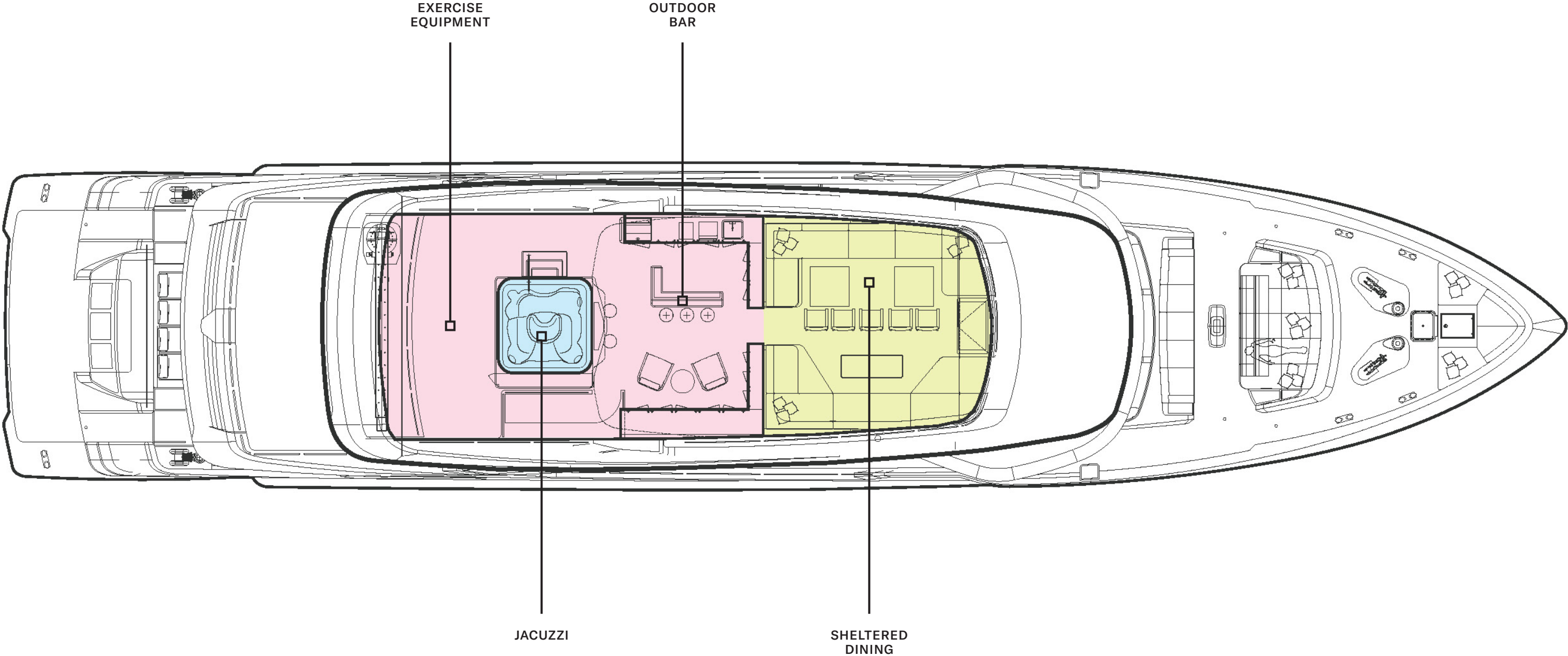
MAIN DECK & LOWER DECK

KEY

- DECK
- GUEST AREAS
- PRINCIPAL CABIN
- GUEST CABINS
- SUN DECK
- CREW AREAS

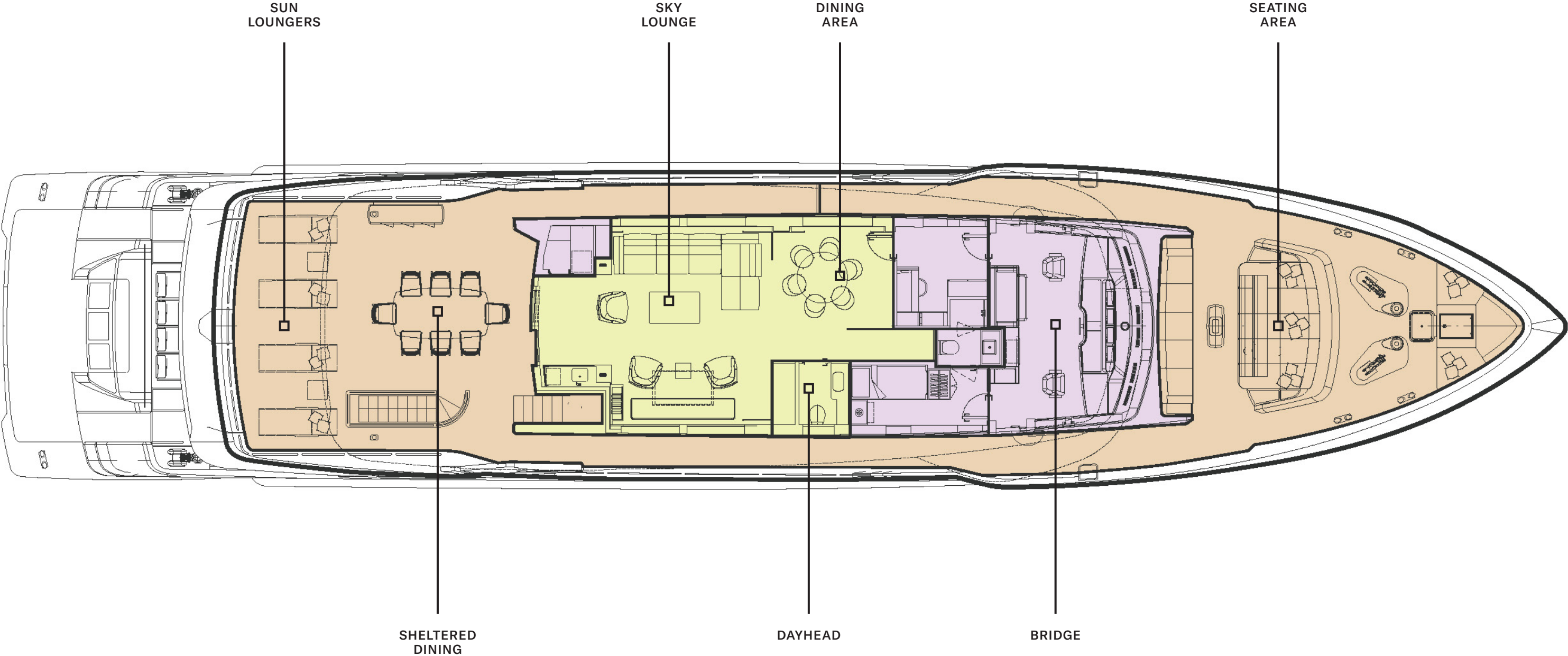


FLY DECK



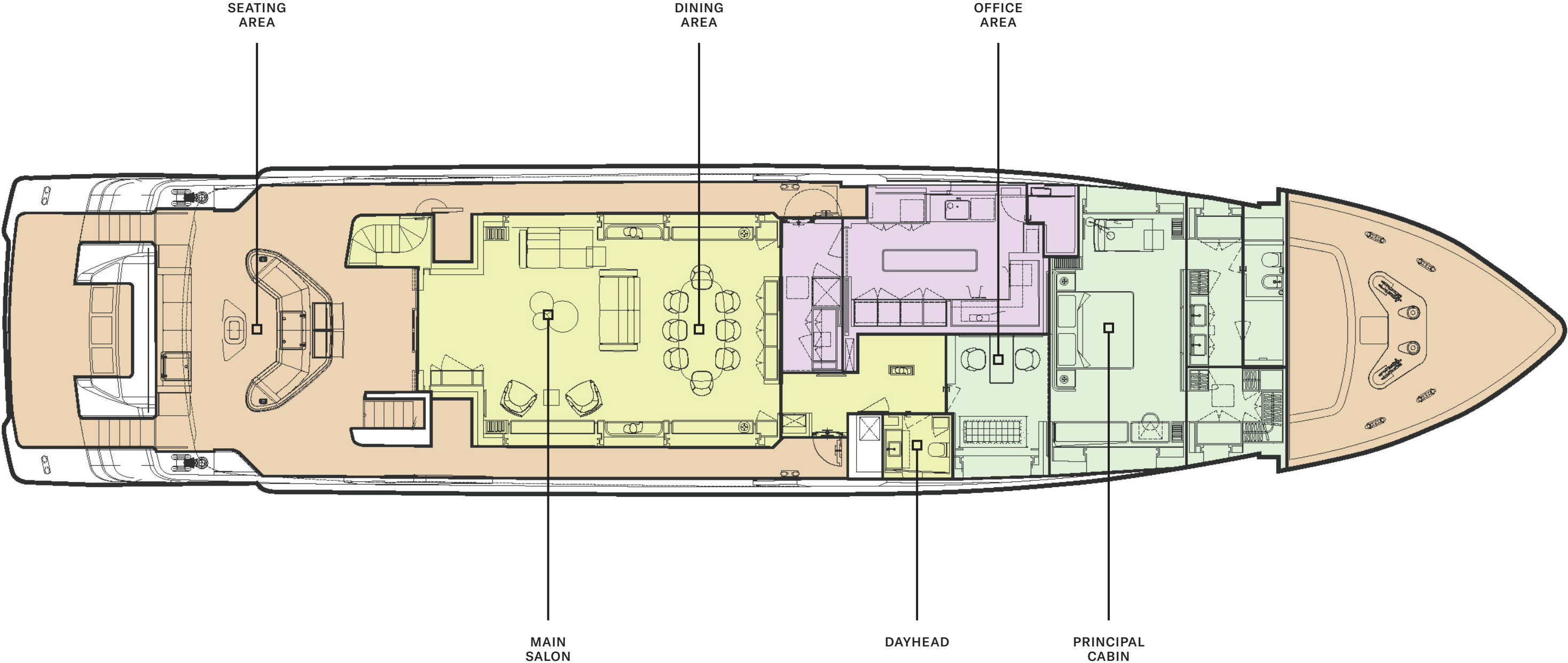
- KEY
- DECK
 - GUEST AREAS
 - PRINCIPAL CABIN
 - GUEST CABINS
 - SUN DECK
 - CREW AREAS

UPPER DECK



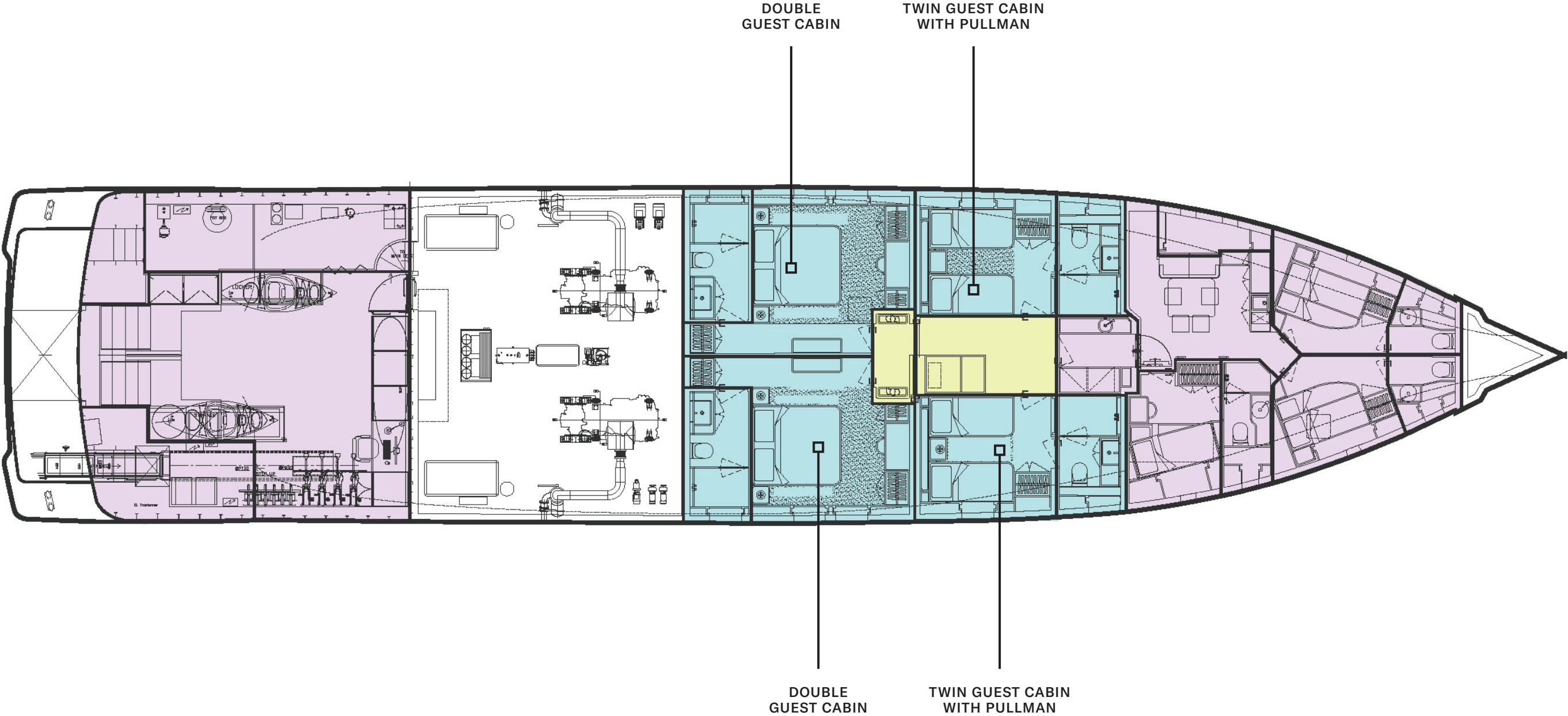
- KEY
- DECK
 - GUEST AREAS
 - PRINCIPAL CABIN
 - GUEST CABINS
 - SUN DECK
 - CREW AREAS

MAIN DECK



- KEY
- DECK
 - GUEST AREAS
 - PRINCIPAL CABIN
 - GUEST CABINS
 - SUN DECK
 - CREW AREAS

LOWER DECK



- KEY
- DECK
 - GUEST AREAS
 - PRINCIPAL CABIN
 - GUEST CABINS
 - SUN DECK
 - CREW AREAS

FOR CHARTER

NURI

