

### Specifications

Partner	Guilford of Maine
Contents	100% polyester (22% recycled)
Repeat	12.5" W, 25" L
Weight	11 ± 1 oz.
Width	54"

### Performance

Abrasion	100,000 double rubs
Flammability	NFPA 260-2003 passed, California Technical Bulletin 117-2013 Section 1 passed
Lightfastness	Class 4
Crocking	Dry and wet: Class 4
Breaking Strength	Warp: 283 lbs. Weft: 232 lbs.

### Sustainability

Gold Facts Rated and manufactured at an ISO 14001 certified facility. Designed and manufactured for recyclability. This fabric may contribute to LEED certification.

For more information including application options, please visit [inscapesolutions.com](https://inscapesolutions.com).

# Punch Card



ABYSS  
U2072



ALABASTER  
U2060



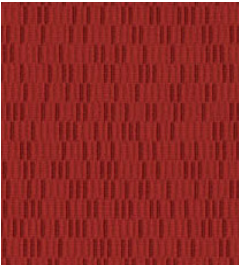
BURGUNDY  
U2070



CADET  
U2069



CARBON  
U2061



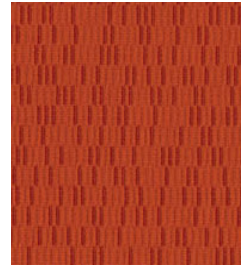
CRIMSON  
U2066



CRISP  
U2064



NAVY  
U2068



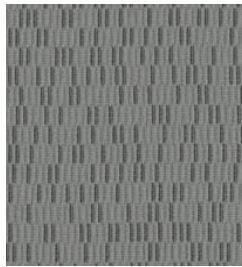
ORANGE  
U2067



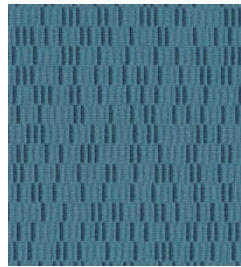
PEAT  
U2071



PUTTY  
U2062



SILVER LINING  
U2063



SKY  
U2065