

Specifications

Partner	Mayer
Contents	100% polyester
Repeat	None
Weight	13.06 oz./lin. yd.
Width	54"

Performance

Abrasion	237,000 double rubs
Flammability	NFPA 260/UFAC Class 1, ASTM E84 (unadhered) Class 1 or A, IMO A.652(16) 8.2, California Technical Bulletin 117-2013
Lightfastness	40 hours, Grade 4.5 minimum
Crocking	Dry and wet: Class 4 minimum
Breaking Strength	Warp: 377 lbs. Weft: 116 lbs.

Sustainability

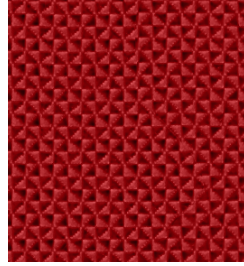
GREENGUARD Gold Certified for low chemical and particle emissions to UL standard UL 2818. This fabric may contribute to LEED certification.

For more information including application options, please visit inscapesolutions.com.

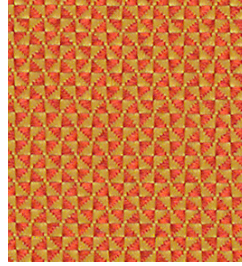
Quattro



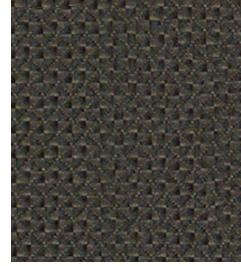
CHALK
U1889



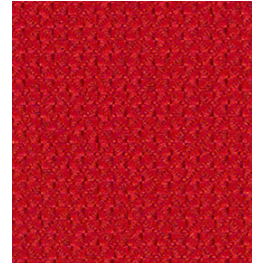
DEEP CRIMSON
U1890



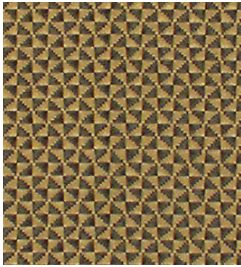
GOLDEN ORANGE
U1891



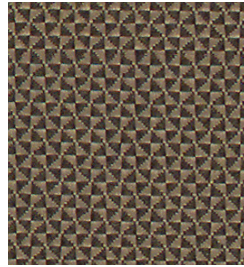
GRANITE
U1892



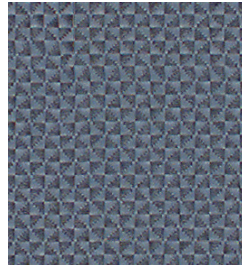
HIBISCUS
U1893



HONEYCOMB
U1894



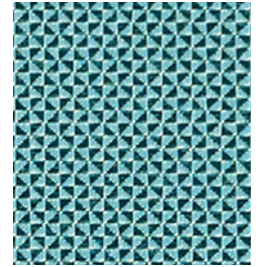
KHAKI
U1895



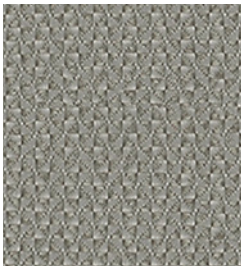
LAGUNA
U1896



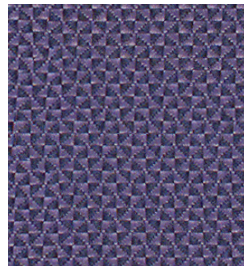
LEAF
U1897



MALLARD
U1898



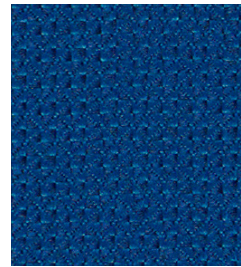
MERCURY
U1899



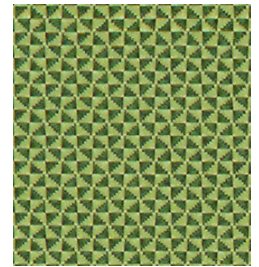
MIDNIGHT BLUE
U1900



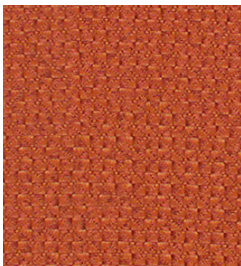
PUMICE
U1901



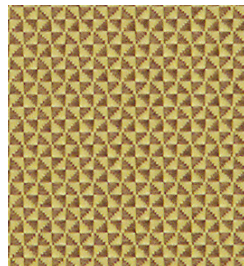
SKYWAY
U1902



SPRING GREEN
U1903



UMBER
U1904



WHEAT
U1905