

Specifications

Partner	Momentum
Contents	72% post-consumer recycled polyester, 28% polyester
Repeat	0.125" L, 0.125" W
Weight	1.00 lb.
Width	56"

Performance

Abrasion	200,000 double rubs
Flammability	UFAC Class 1, NFPA 260 Class 1, ASTM E84, California Technical Bulletin 117-2013
Lightfastness	Class 4 at 40 hours
Crocking	Dry: 5.0 Wet: 5.0
Breaking Strength	Warp: 438 lbs. Weft: 311 lbs.

Sustainability

Recycled fiber content, GREENGUARD Gold Certified, NSF 336 Compliant.

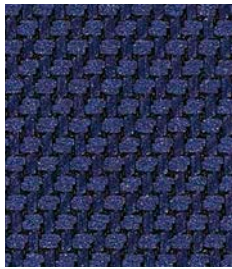
For more information including application options, please visit [inscapesolutions.com](https://www.inscapesolutions.com).



ASH
U1795



BRANCH
U1796



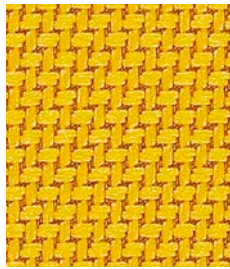
CLASS
U1797



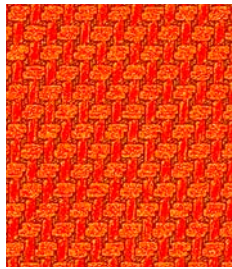
DISTANT
U1798



FLIRT
U1799



SUN
U1820



TANGO
U1821



THEATER
U1822



WASH
U1823



WELD
U1824



FROND
U1800



GRAIN
U1801



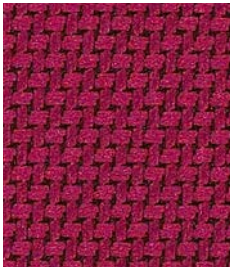
HEDGE
U1802



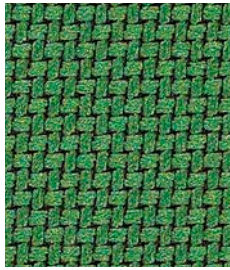
HIDDEN
U1803



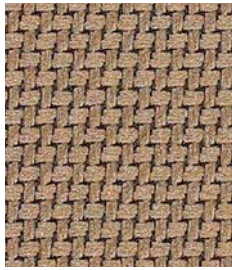
ISLE
U1804



JAZZ
U1805



KELLY
U1806



LATTE
U1807



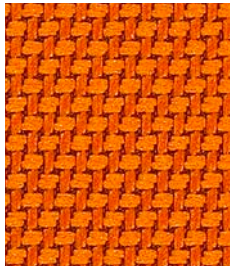
MALBEC
U1808



MILLER
U1809



MIST
U1810



PEEL
U1811



PLATED
U1812



REGAL
U1813



SLY
U1814



SOAR
U1815



SOY
U1816



SPICED
U1817



SPROUT
U1818



STERLING
U1819