**Specifications**

Partner	Mayer
Contents	100% polyester
Repeat	None
Weight	10.71 oz./lin. yd.
Width	54"

Performance

Abrasion	258,000 double rubs
Flammability	NFPA 260/UFAC Class 1, ASTM E84 (adhered) Class 2 or B, California Technical Bulletin 117-2013
Lightfastness	40 hours, Grade 4 minimum
Crocking	Dry and wet: Class 4 minimum
Breaking Strength	Warp: 201 lbs. Weft: 172 lbs.

Sustainability

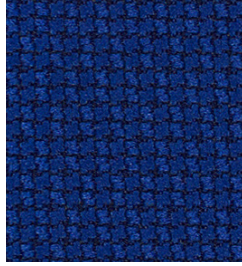
GREENGUARD Gold Certified for low chemical and particle emissions to UL standard UL 2818. This fabric may contribute to LEED certification.

For more information including application options, please visit [inscapesolutions.com](https://www.inscapesolutions.com).

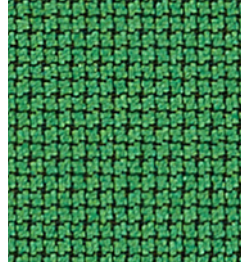
Cross Check



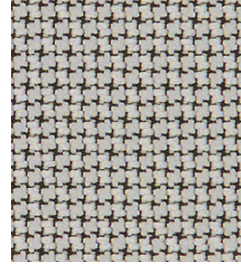
BISCUIT
U1552



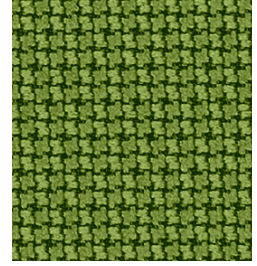
BLUE RIBBON
U1553



BOTTLE
U1554



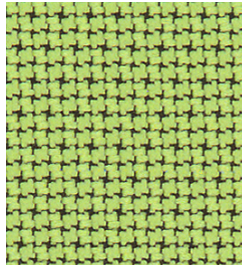
DOVE
U1555



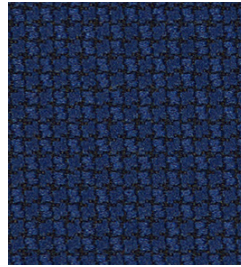
EVERGREEN
U1556



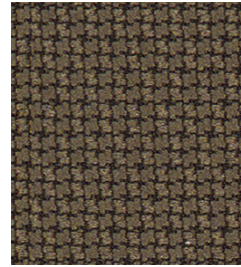
IMPERIAL
U1557



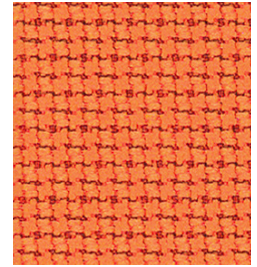
LIME
U1558



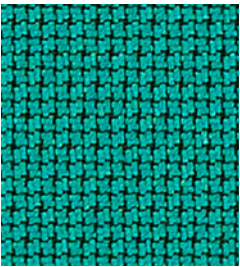
MARINE
U1559



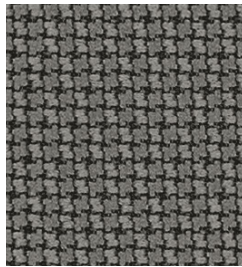
OTTER
U1560



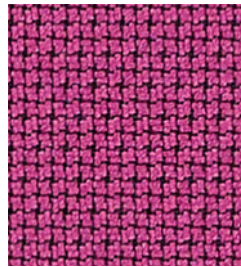
PARADISE
U1561



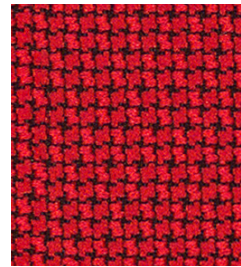
PEACOCK
U1562



PLATINUM
U1563



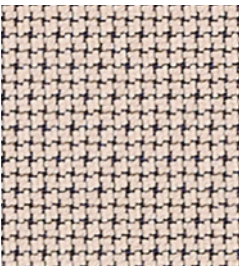
PLUMBERRY
U1564



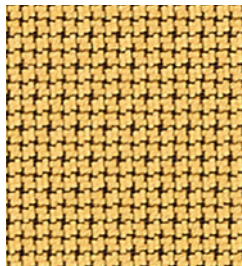
RED BARON
U1565



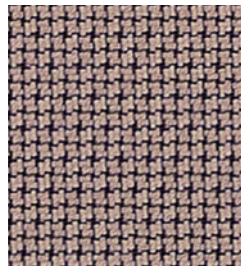
SLATE BLACK
U1566



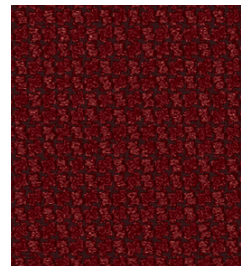
STONE
U1567



SUNSHINE
U1568



TAUPE
U1569



VERMILLION
U1570