

### Specifications

Partner	Momentum
Contents	85% post-consumer recycled polyester, 15% polyester
Repeat	0.125" L, 0.125" W
Weight	0.82 lb.
Width	56"

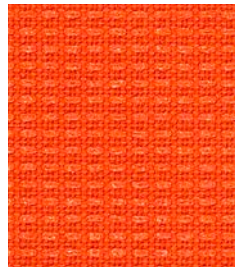
### Performance

Abrasion	200,000 double rubs
Flammability	UFAC Class 1, NFPA 260 Class 1, ASTM E84, California Technical Bulletin 117-2013
Lightfastness	Class 4 at 40 hours
Crocking	Dry and wet: 5.0
Breaking Strength	Warp: 336 lbs. Weft 279 lbs.

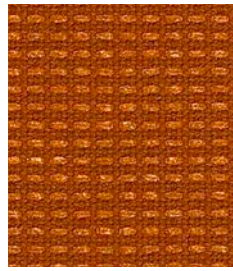
### Sustainability

Recycled fiber content, GREENGUARD Gold Certified,  
NSF 336 Compliant.

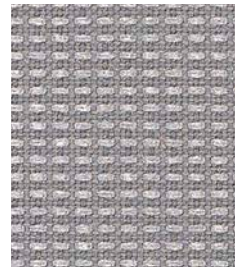
For more information including application options,  
please visit [inscapesolutions.com](https://inscapesolutions.com).



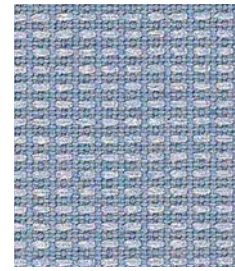
AGLOW  
U1628



AMBER  
U1629



ANCHOR  
U1630



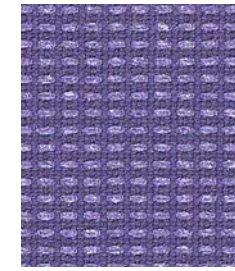
CASCADE  
U1631



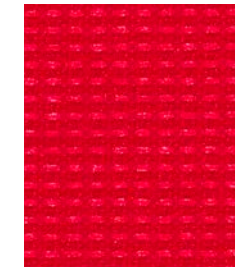
CAVERN  
U1632



STEEL  
U1653



TANZANITE  
U1654



THRILL  
U1655



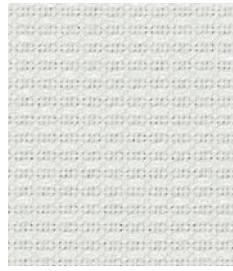
VOYAGE  
U1656



ZINC  
U1657



CERISE  
U1633



CLEAN  
U1634



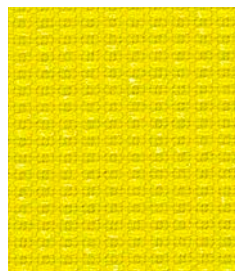
COASTAL  
U1635



COPPER  
U1636



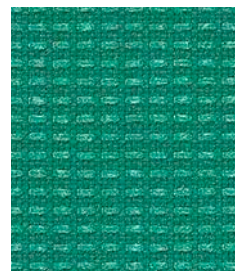
CRISP  
U1637



ELECTRIC  
U1638



GEODE  
U1639



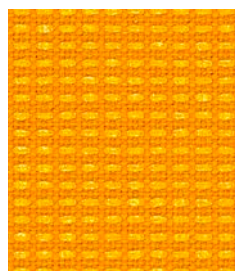
LUSH  
U1640



MOCHA  
U1641



MONUMENT  
U1642



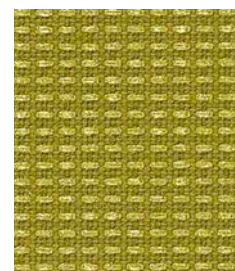
NECTOR  
U1643



ONYX  
U1644



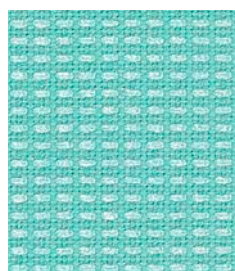
ORCHID  
U1645



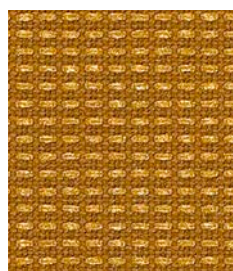
PERIDOT  
U1646



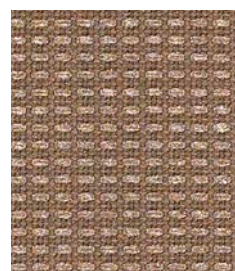
PLATEAU  
U1647



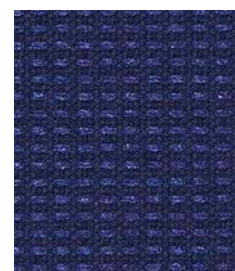
POOL  
U1648



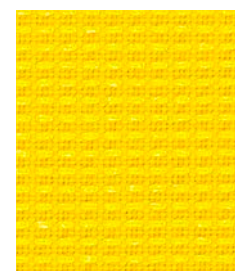
PYRITE  
U1649



SAFARI  
U1650



SAPPHIRE  
U1651



SPARK  
U1652