**Specifications**

Partner	Guilford of Maine
Contents	35% post-consumer recycled polyester, 65% pre-consumer recycled polyester
Repeat	none
Weight	13.1 ± 1.0 oz./lin. yd.
Width	54"

Performance

Abrasion	250,000 double rubs minimum
Flammability	ASTM E84 Class I or A, NFPA 260/UFAC Class I, California Technical Bulletin 117-2013 section 1
Lightfastness	Grade 4 minimum at 40 hours
Crocking	Dry: Grade 4 minimum, Wet: Grade 3 minimum
Breaking Strength	Warp and weft: 275 lbs. minimum

Sustainability	Terratex 100% recycled material and recyclable at end of life
-----------------------	---

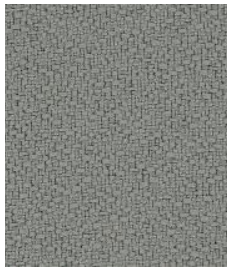
For more information including application options, please visit inscapesolutions.com.

Open House

Open House



ANGORA
U1407



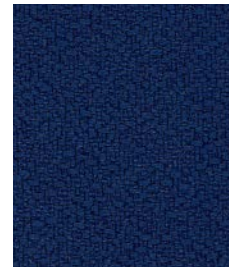
ASTEROID
U1421



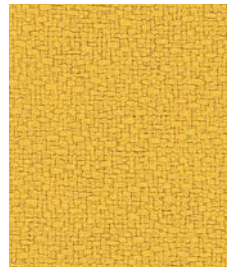
AUBERGINE
UC2096



BIRCH
UC2086



COBALT
UC2091



SUNSHINE
U1419



THISTLE
U1427



VANILLA
U1434



WILLOW
U1405



WOLF
U1436



COFFEE BEAN
U1425



CUMIN
U1414



DEEP WATER
U1415



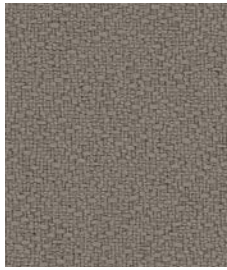
EUCALYPTUS
UC2088



FOSSIL
U1431



GERANIUM
U1426



GOOSE
U1413



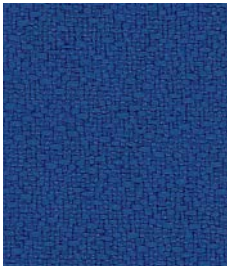
GRAPHITE
UC2090



GREEN APPLE
U1400



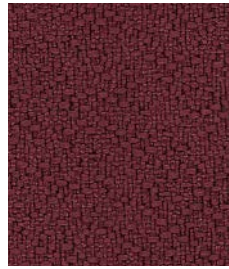
GREEN OLIVE
U1412



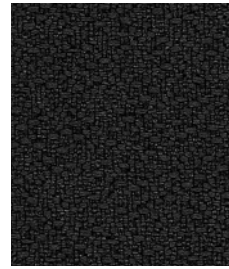
LAPIS
U1432



MIDNIGHT
U1417



MULBERRY
UC2092



ONYX
U1402



PINE NEEDLE
UC2095



PUMPKIN
U1435



QUARRY BLUE
U1416



RED DELICIOUS
U1401



SLATE
U1403



STRAW
U1406