**Specifications**

Partner	Guilford of Maine
Contents	100% polyester (10.3% recycled)
Repeat	12.75" W 15" L
Weight	10.8 ± 1 oz.
Width	54"

**Performance**

Abrasion	100,000 double rubs
Flammability	NFPA 260-2003 passed, California Technical Bulletin 117-2013 Section 1 passed
Lightfastness	Class 4.5
Crocking	Dry and wet: Class 5
Breaking Strength	Warp: 257 lbs. Weft: 131 lbs.

**Sustainability**

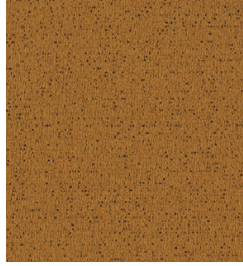
Silver Facts Rated and manufactured at an ISO 14001 certified facility. Designed and manufactured for recyclability. This fabric may contribute to LEED certification.

For more information including application options, please visit [inscapesolutions.com](https://inscapesolutions.com).

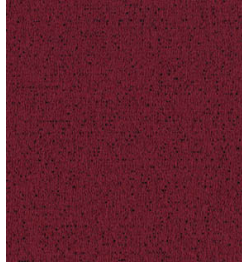
# Pebble



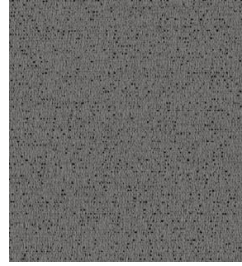
CAPE COD  
U1544



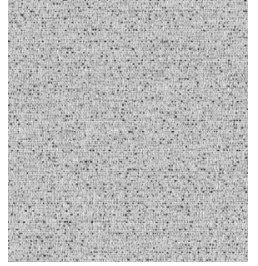
CHESIL  
U1549



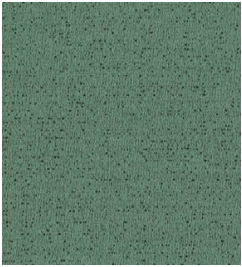
COPACABANA  
U1551



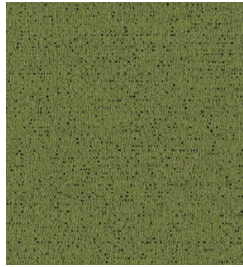
LANGKAWI  
U1542



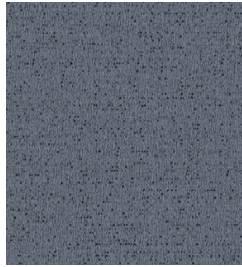
MABUA  
U1541



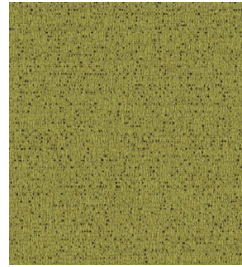
MAYBAY  
U1545



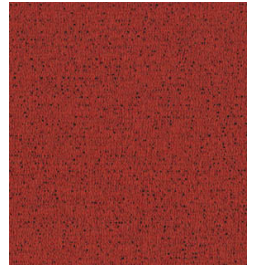
NEGRIL  
U1547



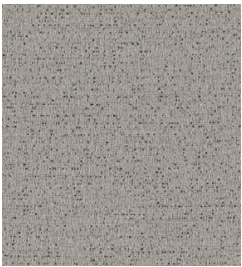
NICE  
U1536



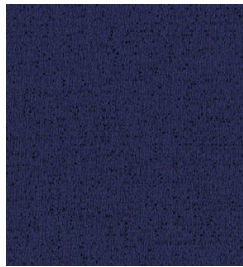
PAPAKOLEA  
U1548



RED BEACH  
U1550



SCHOOLHOUSE  
U1540



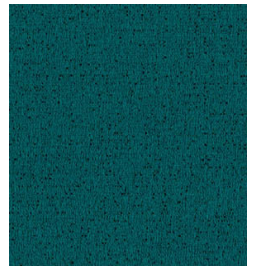
SIESTA  
U1538



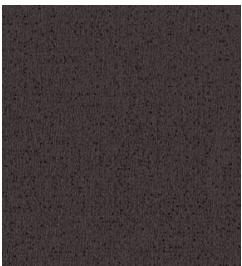
SINDARI  
U1535



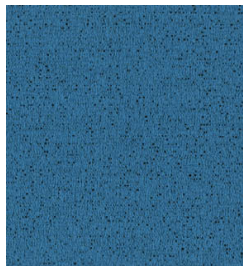
SOUTH BEACH  
U1539



SURFERS PARADISE  
U1546



TENERIFE  
U1543



WAIKIKI  
U1537