

# Fixfast Fastener Selector Guide

Fastener Selector Guide

---

## Steel Framing Systems



**H A D L E Y**  
**G R O U P**

**Hadley Steel Framing**

# Contents

Products for Specific Applications	3 - 5
Accessories	6
Technical Data	7 - 8
Technical Notes	9

## Introduction to Fixfast

Fixfast design, manufacture and supply specialist building fasteners and components for the walls and roofs of industrial, commercial and larger residential buildings. We collaborate with major building envelope system manufacturers, such as Hadley Group, to provide them and their clients with engineered fastening solutions.

This selector guide has been created as an easy to use reference document, identifying the most common fasteners and components for use when installing Hadley Steel Framing Systems.

Full technical data for these products along with application uses can be found on our website at [www.fixfast.com](http://www.fixfast.com) by searching for the product.

Our specification team can assist in providing NBS specifications for specific projects, whilst our customer services team can answer questions regarding the usage or ordering of Fixfast products.

If you have any queries regarding our products or services then please do contact our customer services team on 0800 304 7616 or by emailing [sales@fixfast.com](mailto:sales@fixfast.com).

## Fixing Hadley SFS to hot rolled steel 4.0 - 12.0mm thick

Use DrillFast® carbon steel fasteners (with low profile head)

Use M490-2 bit holder and 3 PZD bit.



### Fastener

DF12-CF-5.5 x 38

## Fixing Hadley SFS to hot rolled steel 4.0 - 12.0mm thick

Use DrillFast® carbon steel fasteners

Use YellowDrive.



### Fastener

DF12-5.5 x 38

## Fixing Hadley SFS to hot rolled steel 8.0 - 25.0mm thick

Use DrillFast® carbon steel fasteners

Use YellowDrive.



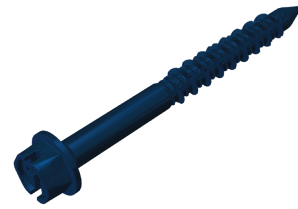
### Fastener

DF25-6.3 x 65

## Fixing Hadley SFS to concrete

### Use TufFast

8m Hex head - use YellowDrive.



#### Fastener

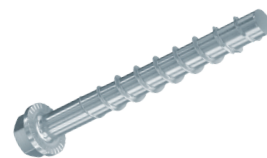
HTF-6.3 x 32

## Fixing Hadley SFS to concrete

### Use Fischer concrete anchors

(ETA approval for concrete C20/25 to C50/60, cracked and non-cracked)

Use Torque wrench & socket.



#### Fastener

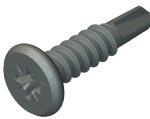
FBS-11-10-60-US - max. fixture thickness 5mm

FBS-11-10-70-US - max. fixture thickness 15mm

# Fixing Hadley SFS to SFS

## Use DrillFast® carbon steel fasteners

Use M490-2 bit holder with 2PZD bit.



Fastener
DF5-CF-5.5 x 22

# Fixing sheathing board to Hadley SFS

## Use DrillFast® carbon steel fasteners

Use M490-2 bit holder with 2PZD bit.



Fastener	Build up (mm)
DF3-W-4.8 x 38	5 - 19

### YellowDrive

One-piece drive socket for DrillFast® carbon fasteners, supports the head for easy accurate driving.

**Product Code:** YELLOWDRIVE



### PZD Drive

Bit holder and bit for installing countersunk head wing tip and pan head screws.

**Product Code:** M490 / 2PZD / 3PZD



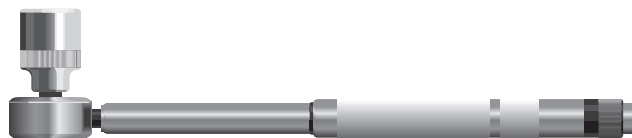
### Socket system

Socket for 15mm hex nut, 9.5mm drive

**Product Code:** 9.5-SOCKET-15

Torque wrench 9.5mm drive

**Product Code:** WRENCH-9.5



Many other tools and accessories are available.

Please see the current Fixfast Product Directory, go to [www.fixfast.com](http://www.fixfast.com), or ask the Fixfast customer service team.

### DF3 Range

Material	Steel SAE1022 case hardened
Coating	Organic
Drilling Capacity	1.2mm - 3.0mm steel
Pull-out Values (axial load resistance)	
Substrate	Characteristic value
1.2mm Steel	1.52kN
2.0mm Steel	3.01kN
3.0mm Steel	5.42kN
Softwood 35mm Embedment	3.57kN

### DF12 Range

Material	Steel SAE1022 case hardened
Coating	Organic
Drilling Capacity	4.0mm - 12.0mm steel
Pull-out Values (axial load resistance)	
Substrate	Characteristic value
4.0mm Steel	5.44kN
6.0mm Steel	12.75kN
8.0mm Steel	13.92kN
12.0mm Steel	13.92kN

### DF25 Range

Material	SAE1022 steel case hardened
Coating	Organic
Drilling Capacity	8.0mm - 25.0mm Steel
Pull-out Values (axial load resistance)	
Substrate	Characteristic value
8.0mm Steel	15.63kN
12.0mm Steel	15.63kN

## Technical Data

### DF5-CF-5.5 range

Material	SAE1022 steel case hardened
Coating	Multiple layer organic
Drilling Capacity	1.2mm - 5.0mm steel
Pull-out Values (axial load resistance)	
Substrate	Characteristic value
1.2mm Steel	1.52kN
2.0mm Steel	5.42 kN
5.0mm Steel	10.76 kN

### DF12-CF Range

Material	SAE1022 steel case hardened
Coating	Organic
Drilling Capacity	4.0mm - 12.0mm steel
Pull-out Values (axial load resistance)	
Substrate	Characteristic value
4.0mm Steel	7.94kN
6.0mm Steel	9.84kN
8.0mm Steel	9.84kN
12.0mm Steel	9.84kN

### DF3-W Range

Material	Steel SAE1022 case hardened
Coating	Organic
Drilling Capacity	1.5 - 3.0 mm steel
Pull-out Values (axial load resistance)	
Substrate	Characteristic value
1.5mm Steel	2.27kN
2.0mm Steel	3.28kN
3.0mm Steel	6.53kN



### Fastener Data

- + All dimensions are subject to manufacturing tolerances.
- + Performance values are tested and calculated according to Eurocode procedures and appropriate safety factors should be applied in any calculations using these values.

### Fastener Selection

- + Recommended fastener lengths are calculated using standard tolerances for the fasteners and the combination of materials in the build-up.
- + If there is distortion in the supporting construction, or other non-standard application detail, longer fasteners may be necessary than those shown. Always check the actual circumstances before deciding on a particular length.

### Further Assistance

- + For any enquiry, or to discuss your requirements with someone knowledgeable, call the Fixfast customer service team on **0800 304 7616**.
- + Full literature is available for the Fixfast range, or visit **[www.fixfast.com](http://www.fixfast.com)**
- + Other performance data may be available on request. For more unusual applications, tests can be carried out in our in-house technical centre to provide the necessary data.
- + Site visits are also possible, particularly for pull-out performance into concrete, masonry or other variable substrates. Please ask for a Site Visit Request form if you think this service would be useful.
- + CAD files of fasteners are available on request for inclusion in drawings.

The information contained in this document is based on the specification of the Hadley system and Fixfast's product data. It is provided in good faith but Fixfast cannot be held liable for any errors. Performance is dependent on adherence to the conditions and instructions contained in Fixfast's Technical Data Sheets for the products shown. Performance values should be approved by a qualified engineer, and Fixfast recommend preliminary tests for any application where variation is possible in the materials or substrates involved.

[illegible]





Merlin House  
Seven Mile Lane  
Borough Green  
Sevenoaks  
Kent  
TN15 8QY

**Enquiries**

0800 304 7616

**International**

+44 (0) 1732 882387

**Fax**

0845 450 7486

**Email**

info@fixfast.com



Certificate number 10905  
ISO 9001, ISO 14001  
ISO 45001