

Protex Insulated System Fastener and Sealant Selector Guide

Contents

Products for specific applications	Page 3-9
Fastener data	Page 10-11
Technical Notes	Page 12
Accessories	Page 13
General Notes	Page 14-15

All A2 / 304 stainless steel fasteners are warranted for up to 25 years.
For projects in marine environments (up to 2km from the coast), please
enquire for details.

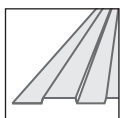
Maximum reliability. Minimum fuss.

Main outer fixing to cold rolled steel.

Use MatchFast® stainless steel fasteners.

Use A15 washer for wall application and A19 washer for roof application.

11mm bi-hex head, use Fixfast MF1165 drive.



Fastener Code

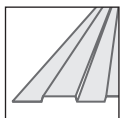
MF3-SS-A19-5.5 x 35 (roof application)

MF3-SS-A15-5.5 x 35 (wall application)

Outer fixing - stitcher.

Use MatchFast® stainless steel fasteners.

11mm bi-hex head, use Fixfast MF1165 drive.



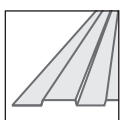
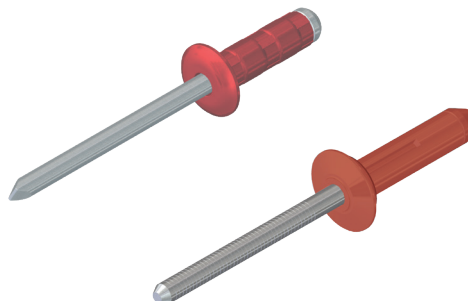
Fastener Code

MF2-SS-A15-6.3 x 25

Outer fixing - rivets.

Use TriGrip rivets and standard rivets.

Use powered riveting gun for installation.



Fastener Code

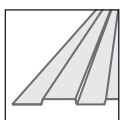
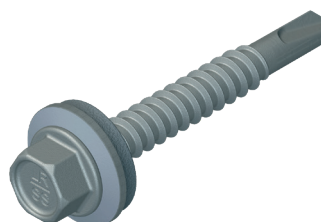
RTG-AA-LAC-5.2 x 19

RSS-LAC-4.8 x 10

Main inner fixing to cold rolled steel.

Use DrillFast® stainless steel fasteners.

8mm hex head, use Fixfast GreenDrive.



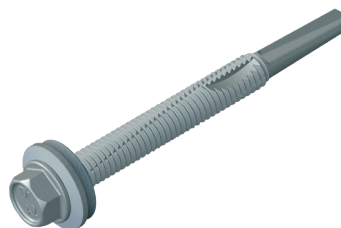
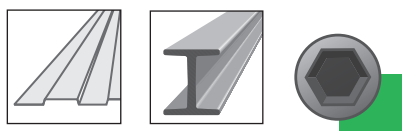
Fastener Code

DF3-SS-A15-5.5 x 35

Main inner fixing to hot rolled steel.

Use DrillFast® stainless steel fasteners.

8mm hex head, use Fixfast GreenDrive.



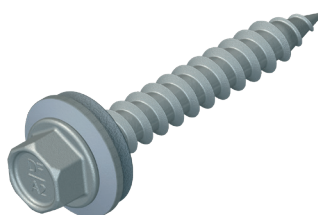
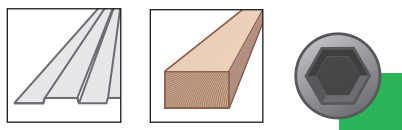
Fastener Code

DF12-SS-A15-5.5 x 40

Main inner fixing to timber.

Use DrillFast® stainless steel fasteners.

8mm hex head, use Fixfast GreenDrive.



Fastener Code

DFT-SS-A15-6.0 x 50

Inner fixing - stitcher.

Use DrillFast® stainless steel fasteners.

8mm hex head, use Fixfast GreenDrive.



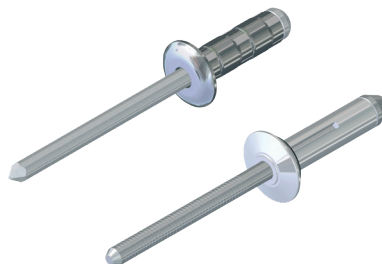
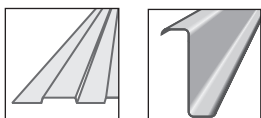
Fastener Code

DF2-SS-LS-A15-6.3 x 25

Inner fixing - rivets.

Use TriGrip rivets and standard rivets.

Use powered riveting gun for installation.



Fastener Code

RTG-AA-5.2 x 19

R-AC-4.8 x 10

Butyl strip sealant for end and side lap application on top sheet.

Also use for end lap application on liner sheet.

Use A Class butyl strip sealant



Sealant Code	Thickness x width (mm)	Roll length (m)	Box Quantity
A-5 x 6 x 9.6	5 x 6	9.6	30

Polyband butyl tape for side laps in a liner application.

Use PB-50 butyl tape



Sealant Code	Thickness x width (mm)	Roll length (m)	Box Quantity
PB-50	1.5 x 50	35	6

Bedding sealant for filler blocks at ridges and hips.

Use Seelex BR gun grade solvent release bedding sealant



Sealant Code

SEELEX BR

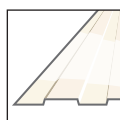
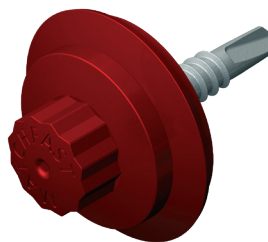


25 year warranty - rooflight fixings

Main outer sheet fixing to cold rolled steel.

Use MatchFast® stainless steel fasteners.

11mm bi-hex head, use Fixfast MF1165 drive.



Fastener Code

MF3-SS-L29-5.5 x 35

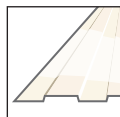
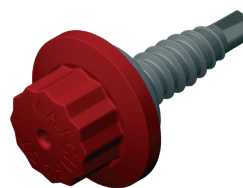


25 year warranty - rooflight fixings

Outer fixing - stitcher.

Use MatchFast® stainless steel fasteners.

11mm bi-hex head, use Fixfast MF1165 drive.



Fastener Code

MF2-SS-A15-6.3 x 25

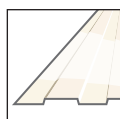
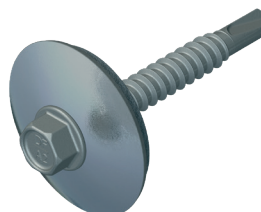


25 year warranty - rooflight fixings

Main liner sheet fixing to cold rolled steel.

Use DrillFast® stainless steel fasteners.

8mm hex head, use Fixfast GreenDrive.



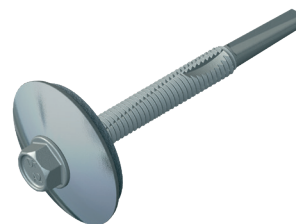
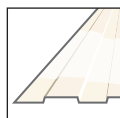
Fastener Code

DF3-SS-A29-5.5 x 35

Main liner sheet fixing to hot rolled steel.

Use DrillFast® stainless steel fasteners.

8mm hex head, use Fixfast GreenDrive.



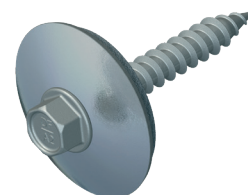
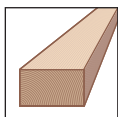
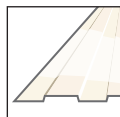
Fastener Code

DF12-SS-L29-5.5 x 40

Main liner sheet fixing to timber.

Use DrillFast® stainless steel fasteners.

8mm hex head, use Fixfast GreenDrive.



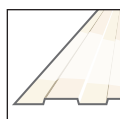
Fastener Code

DFT-SS-L29-6.0 x 50

Liner sheet fixing - stitcher.

Use DrillFast® stainless steel fasteners.

8mm hex head, use Fixfast GreenDrive.



Fastener Code

DF2-SS-A15-6.3 x 25

Fastener Data

MF3-SS-5.5 / DF3-SS-5.5

Material	A2 stainless steel, with SAE1022 steel case hardened welded point MF fasteners have nylon moulded head		
Coating	Organic		
Drilling capacity	1.2mm — 3.6mm S275 steel		
Characteristic pull-out value (axial load resistance)	1.2mm S275 steel	2.0mm S275 steel	3.0mm S275 steel
	2.07 kN	4.22 kN	4.76 kN
Characteristic pull-through value (axial load resistance) 0.5mm steel / A15 washer	3.38 kN		
Characteristic pull-through value (axial load resistance) 0.7mm steel / A15 washer	4.97 kN		
Characteristic shear value (lateral load resistance) Fastener through material (i) into material (ii) Material (i) = metal sheeting Material (ii) = 1.2mm steel	1.95 kN		

MF12-SS-5.5 / DF12-SS-5.5

Material	A2 stainless steel, with SAE1022 steel case hardened welded point MF fasteners have nylon moulded head			
Coating	Organic			
Drilling capacity	4.0mm — 12.0mm S275 steel			
Characteristic pull-out value (axial load resistance)	4.0mm S275 steel	6.0mm S275 steel	8.0mm S275 steel	12.0mm S275 steel
	4.99 kN	9.88 kN	11.87 kN	11.87 kN
Characteristic pull-through value (axial load resistance) 0.5mm steel / A15 washer	3.38 kN			
Characteristic shear value (lateral load resistance) Fastener through material (i) into material (ii) Material (i) = metal sheeting Material (ii) = 4.0mm steel	2.11 kN			

Fastener Data

MF2-SS-6.3 / DF2-SS-6.3

Material	A2 stainless steel, with SAE1022 steel case hardened welded point MF fasteners have nylon moulded head
Coating	Organic
Drilling capacity	2 sheets of S275 steel up to 1.0mm thickness each
Characteristic pull-out value (axial load resistance)	0.5mm S275 steel
	0.60 kN
Characteristic pull-through value (axial load resistance) 0.5mm steel / A15 washer	3.38 kN
Characteristic shear value (lateral load resistance) Fastener through material (i) into material (ii) Material (i) = metal sheeting Material (ii) = 0.5mm steel	1.25 kN

MFT-SS-6.0 / DFT-SS-6.0

Material	A2 stainless steel, with SAE1022 steel case hardened welded point MF fasteners have nylon moulded head
Coating	Organic
Characteristic pull-out value (axial load resistance)	Softwood 35mm embedment
	6.36 kN
Characteristic pull-through value (axial load resistance) 0.5mm steel / A15 washer	3.38 kN
Characteristic pull-through value (axial load resistance) 0.7mm steel / A15 washer	4.97 kN
Characteristic shear value (lateral load resistance) Fastener through material (i) into material (ii) Material (i) = metal sheeting Material (ii) = 1.2mm steel	1.94 kN

Technical Notes

Fastener Data

- All dimensions are subject to manufacturing tolerances.
- Performance values are characteristic failure values and appropriate safety factors should be applied in any calculations using these values.
- Build-up figures are for the specific fastener variant shown, into the maximum thickness of standard substrate. These figures may be increased by the thickness difference for thinner substrates and may not apply for different uses.

Fastener Selection

- Recommended fastener lengths are calculated using standard tolerances for the fasteners and the combination of materials in the build-up.
- If there is distortion in the supporting construction, or other non-standard application detail, longer fasteners may be necessary than those shown. Always check the actual circumstances before deciding on a particular length.

Further Assistance

- For any enquiry, or to discuss your requirements with someone knowledgeable, call the Fixfast customer service team on 0800 304 7616.
- Full literature is available for the Fixfast range, or visit www.fixfast.com.
- Other performance data may be available on request. For more unusual applications, tests can be carried out in our in-house technical centre to provide the necessary data.
- Site visits are also possible, particularly for pull-out performance into concrete, masonry or other variable substrates. Please ask for a Site Visit Request form if you think this service would be useful.
- CAD files of fasteners are available on request for inclusion in drawings.

The information contained in this document is based on the specification of the Firth Steels system and Fixfast's product data. It is provided in good faith but Fixfast cannot be held liable for any errors. Performance is dependent on adherence to the conditions and instructions contained in Fixfast's Technical Data Sheets for the products shown. Performance values should be approved by a qualified engineer, and Fixfast recommend preliminary tests for any application where variation is possible in the materials or substrates involved.

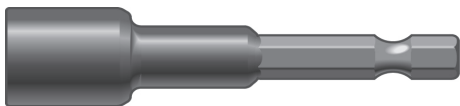
Accessories

GreenDrive



One-piece drive socket with retaining clip for 8mm hex-head DrillFast stainless steel fasteners.
Product Code GREENDRIVE

MF1165 Drive



One-piece recess drive socket - 11mm bi-hex for MatchFast fasteners, supports the head for easy accurate driving.
Product Code MF1165

Many other tools and accessories are available. Please see the current Fixfast Product Directory, go to www.fixfast.com, or ask the Fixfast customer service team.

General Notes

General Notes



Firth Steels Ltd
Calderbank
River Street
Brighouse
West Yorkshire
HD6 1LU
United Kingdom

T: +44 (0) 1484 405940
F: +44 (0) 1484 405941
E: info@firth-steels.co.uk
W: www.firth-steels.co.uk