

Maximum reliability. Minimum fuss.



Selector Guide

# R-MER Metal Roof System

**R-MER**

Fastener Systems and Sealing Products

# Contents

Products for Specific Applications	3 - 6
Accessories	7
Technical Data	8 - 9
Technical Notes	10

## Introduction to Fixfast

Fixfast design, manufacture and supply specialist building fasteners and components for the walls and roofs of industrial, commercial and larger residential buildings. We collaborate with major building envelope system manufacturers, such as R-MER, to provide them and their clients with engineered fastening and sealing solutions.

This selector guide has been created as an easy to use reference document, identifying the most common fasteners and components for use when installing the R-MER standing seam system.

Full technical data for these products along with application uses can be found on our website at [www.fixfast.com](http://www.fixfast.com) by searching for the product.

Our specification team can assist in providing NBS specifications for specific projects, whilst our customer services team can answer questions regarding the usage or ordering of Fixfast products.

If you have any queries regarding our products or services then please do contact our customer services team on 0800 304 7616 or by emailing [sales@fixfast.com](mailto:sales@fixfast.com).

## Clip application

### Fixing clips to timber boarding 24mm thick



#### **Drillfast® Stainless**

A2 Stainless steel self drilling fastener  
Code DFT-SS-6.0 x 32

### Fixing clips to timber sub-frame (min. dimensions 60 x 40mm)



#### **Drillfast® Stainless**

A2 Stainless steel self drilling fastener  
Code DFT-SS-6.0 x 40

### Fixing clips to steel Z profiles or liners up to 1.6mm thick



#### **Drillfast® Stainless**

A2 Stainless steel self drilling fastener  
Code DF3-SS-5.5 x 25

### Fixing clips to steel 4mm - 12mm thick



#### **Drillfast® Stainless**

A2 Stainless steel self drilling fastener  
Code DF12-SS-5.5 x 40

### Fixing clips through rigid insulation to steel sub-structure



#### **Drillfast® Stainless**

A2 Stainless steel self drilling fastener  
Code DF3-SS-5.5 x 55



#### **Drillfast® Stainless**

A2 Stainless steel self drilling fastener  
Code DF3-SS-HT-A15-5.5 x length

Sizes available:

85mm  
110mm  
130mm  
150mm  
180mm  
225mm  
275mm

## Supporting sub-frame application

### Fixing timber lathing to timber lathing



#### **Stainless steel countersunk woodscrew**

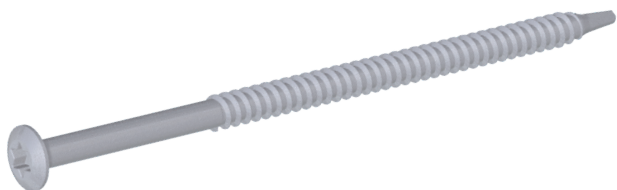
Codes:

CWS-SS-5.0 x 70

CWS-SS-6.0 x 120

CWS-SS-6.0 x 200

### Fixing wooden lathing to steel 0.75 - 1.20mm thick



#### **SureFast®**

A4 Stainless oval head self drilling fastener

Codes:

SF-RS-SSA4-4.8 x 60

SF-RS-SSA4-4.8 x 80

### Fixing wooden lathing to steel 1.5 - 3.0mm thick



#### **Drillfast® Stainless**

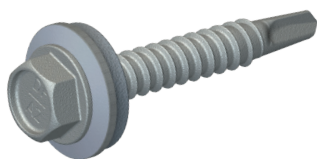
A4 Stainless steel countersunk head self drilling fastener

Codes:

DF3-SS-W-5.5 x 60

DF3-SS-W-5.5 x 80

### Fixing steel Z profiles to Z profile or liners up to 2.5mm thick



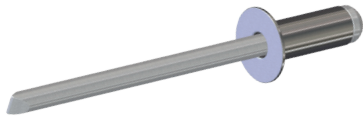
#### **Drillfast® Stainless**

A2 Stainless steel self drilling fastener

Code DF3-SS-A15-5.5 x 25

## Fixed point application

Fixing to sheet, trapezoidal sheet, ridge closure etc.

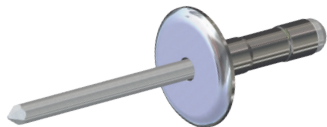


### Concealed rivet

Code: R-AC-CSK-4.8 x 12

## Ridge Closure application

Ridge closure to seam



### Large flange rivet

Code: R-AS-LF-4.8 x 17

## Flashing application

Fixing suspended profiles to seam



### Large flange rivet

Code: R-AS-LF-4.8 x 17

### GreenDrive

One-piece drive socket for DrillFast® stainless fasteners, supports the head for easy accurate driving.

**Product Code:** GREENDRIVE



### RedDrive

One-piece drive socket for DrillFast® low profile fasteners, supports the head for easy accurate driving.

**Product Code:** REDDRIVE



Many other tools and accessories are available.

Please see the current Fixfast Product Directory, go to **[www.fixfast.com](http://www.fixfast.com)**, or ask the Fixfast customer service team.

### DF3-SS-HT-5.5 Range

Material	1.4301 stainless steel (304M), with steel case hardened welded point
Coating	Organic
Drilling Capacity	1.2mm - 3.0mm steel
Pull-out Values (axial load resistance)	
Substrate	Characteristic value
1.2mm Steel	1.30kN
2.0mm Steel	2.62kN
3.0mm Steel	4.76kN
Softwood 35mm Embedment	3.57kN

### DF3-SS-5.5 Range

Material	1.4301 Stainless steel (304M), with steel case hardened welded point
Coating	Organic
Drilling Capacity	1.2mm - 3.0mm steel
Pull-out Values (axial load resistance)	
Substrate	Characteristic value
1.2mm Steel	1.30kN
2.0mm Steel	2.62kN
3.0mm Steel	4.76kN
Softwood 35mm Embedment	3.57kN

### DF12-SS-5.5 Range

Material	1.4301 Stainless steel (304M), with steel case hardened welded point
Coating	Organic
Drilling Capacity	4.0mm - 12.0mm steel
Pull-out Values (axial load resistance)	
Substrate	Characteristic value
4.0mm Steel	2.80kN
6.0mm Steel	3.09kN
8.0mm Steel	6.89kN
12.0mm Steel	6.89kN



### DFT-SS-6.0 Range

Material	A2 stainless steel
Coating	Organic
Drilling Capacity	0.7mm steel
Pull-out Values (axial load resistance)	
Substrate	Characteristic value
Softwood 35mm embedment	6.36kN

### SF-RS-SSA4-4.8

Material	1.4401 stainless steel (316M) with carbon steel hardened welded point
Coating	Organic
Drilling Capacity	2 sheets 1.0mm thickness
Pull-out Values (axial load resistance)	
Substrate	Characteristic value
0.7mm Steel	1.08 kN
0.9mm Steel	1.45 kN
1.2mm Steel	2.24 kN
18mm Plywood	1.77 kN
18mm OSB	1.37 kN
Softwood 35mm embedment	3.89 kN

### DF3-SSA4-W-5.5 Range

Material	1.4401 stainless steel (316M), with carbon steel case hardened welded point
Coating	Organic
Drilling Capacity	1.5mm - 3.0mm steel
Pull-out Values (axial load resistance)	
Substrate	Characteristic value
1.5mm Steel	1.80kN
2.0mm Steel	3.64kN
3.0mm Steel	6.24kN

### Fastener Data

- + All dimensions are subject to manufacturing tolerances.
- + Performance values are tested and calculated according to Eurocode procedures and appropriate safety factors should be applied in any calculations using these values.

### Fastener Selection

- + Recommended fastener lengths are calculated using standard tolerances for the fasteners and the combination of materials in the build-up.
- + If there is distortion in the supporting construction, or other non-standard application detail, longer fasteners may be necessary than those shown. Always check the actual circumstances before deciding on a particular length.

### Further Assistance

- + For any enquiry, or to discuss your requirements with someone knowledgeable, call the Fixfast customer service team on **0800 304 7616**.
- + Full literature is available for the Fixfast range, or visit **[www.fixfast.com](http://www.fixfast.com)**
- + Other performance data may be available on request. For more unusual applications, tests can be carried out in our in-house technical centre to provide the necessary data.
- + Site visits are also possible, particularly for pull-out performance into concrete, masonry or other variable substrates. Please ask for a Site Visit Request form if you think this service would be useful.
- + CAD files of fasteners are available on request for inclusion in drawings.

The information contained in this document is based on the specification of the R-MER standing seam system and Fixfast's product data. It is provided in good faith but Fixfast cannot be held liable for any errors. Performance is dependent on adherence to the conditions and instructions contained in Fixfast's Technical Data Sheets for the products shown. Performance values should be approved by a qualified engineer, and Fixfast recommend preliminary tests for any application where variation is possible in the materials or substrates involved.





Merlin House  
Seven Mile Lane  
Borough Green  
Sevenoaks  
Kent  
TN15 8QY

**Enquiries**  
0800 304 7616  
**International**  
+44 (0) 1732 882387  
**Fax**  
0845 450 7486  
**Email**  
info@fixfast.com



Certificate number 10905  
ISO 9001, ISO 14001  
OHSAS 18001