

Maximum reliability. Minimum fuss.



Selector Guide

Quadcore Karrier

Kingspan

Fastener Systems and Sealing Products

Contents

Products for Specific Applications	3 - 7
Accessories	8
Technical Data	9 - 10
Technical Notes	11

Introduction to Fixfast

Fixfast design, manufacture and supply specialist building fasteners and components for the walls and roofs of industrial, commercial and larger residential buildings. We collaborate with major building envelope system manufacturers, such as Kingspan, to provide them and their clients with engineered fastening and sealing solutions.

This selector guide has been created as an easy to use reference document, identifying the most common fasteners and components for use when installing the Kingspan Quadcore Karrier panel system.

Full technical data for these products along with application uses can be found on our website at www.fixfast.com by searching for the product.

Our specification team can assist in providing NBS specifications for specific projects, whilst our customer services team can answer questions regarding the usage or ordering of Fixfast products.

If you have any queries regarding our products or services then please do contact our customer services team on 0800 304 7616 or by emailing sales@fixfast.com.

Quadcore Karrier primary fixing to cold rolled steel 1.2 - 3.0mm

Use DrillFast® Stainless steel low profile high thread fasteners

Low profile TX25 head, use Fixfast RedDrive.



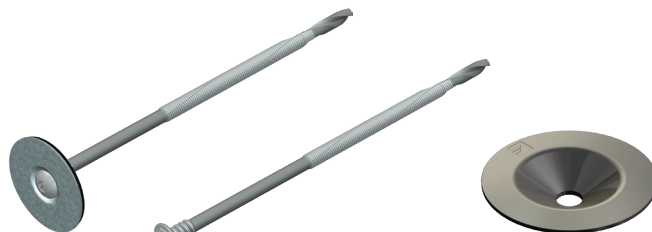
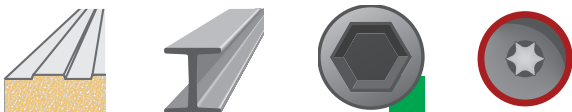
Panel Thickness	Fastener Code
80mm	DF3-SSA4-P-HT-SFW-5.5 x 115
100mm	DF3-SSA4-P-HT-SFW-5.5 x 155
125mm	DF3-SSA4-P-HT-SFW-5.5 x 155
150mm	DF3-SSA4-P-HT-SFW-5.5 x 240
175mm	DF3-SSA4-P-HT-SFW-5.5 x 240
200mm	DF3-SSA4-P-HT-SFW-5.5 x 240
220mm	DF3-SS-HT-5.5 x 275 (with SP-40-DD plate)

For fixing panels to timber, please contact Fixfast Customer Service team on **0800 304 7616**

Quadcore Karrier primary fixing to hot rolled steel 4.0 - 12.0mm

Use DrillFast® Stainless fasteners and deep dish washer or DrillFast® stainless low profile fastening system

8mm hex head, use Fixfast GreenDrive
Low profile head, TX drive - use Fixfast RedDrive
Cut out for deep dish washer; 25mm

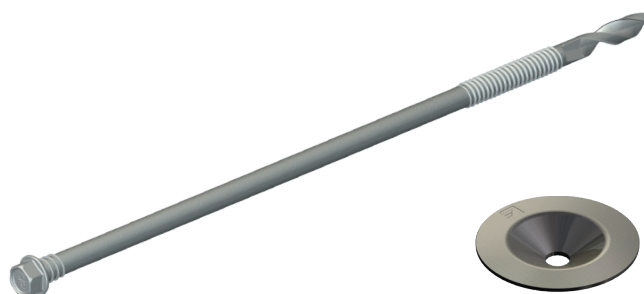


Panel Thickness	Fastener Code
50	DF12-SS-HT-5.5 x 95 (with SP-40-DD plate)
60	DF12-SSA4-P-HT-SFW-5.5 x 165
80	DF12-SSA4-P-HT-SFW-5.5 x 165
100	DF12-SSA4-P-HT-SFW-5.5 x 165
125	DF12-SSA4-P-HT-SFW-5.5 x 165
150	DF12-SSA4-P-HT-SFW-5.5 x 230
175	DF12-SSA4-P-HT-SFW-5.5 x 230
200	DF12-SSA4-P-HT-SFW-5.5 x 230
220	DF12-SS-HT-5.5 x 300 (with SP-40-DD plate)

Quadcore Karrier primary fixing to hot rolled steel 8.0 - 25.0mm

Use DrillFast® stainless steel high thread fasteners with deep dish washer

8mm hex head, use Fixfast GreenDrive.
Cut out for deep dish washer : 25mm

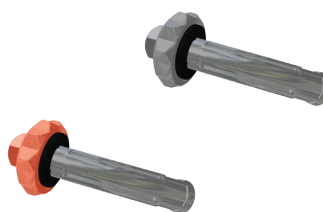


Panel Thickness	Fastener Code
80mm	<i>Please enquire for details</i>
100mm	DF25-SSA4-HT-5.5 x 225 (with SP-40-DD plate)
125mm	DF25-SSA4-HT-5.5 x 225 (with SP-40-DD plate)
150mm	DF25-SSA4-HT-5.5 x 225 (with SP-40-DD plate)
175mm	DF25-SSA4-HT-5.5 x 275 (with SP-40-DD plate)
200mm	DF25-SSA4-HT-5.5 x 275 (with SP-40-DD plate)
220mm	DF25-SSA4-HT-5.5 x 325 (with SP-40-DD plate)

Quadcore Karrier fixing facade support system to panel

Use SeamGrip

Tooling:
SG - installation tool



Fastener Code
SG-SS-8.0 x 34
SG-SS-8.0 x 41
SG-SS-LAC-8.0 x 34
SG-SS-LAC-8.0 x 41

Quadcore Karrier gasket sealing strip for vertical rails

Use Bubble Gasket

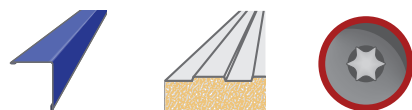


Code	Bubble height (mm)	Roll width (mm)	Roll length (m)
EPDM-BG-10 x 95 x 40	10	95	40

Quadcore Karrier fixing for metal flashing to panel

Use DrillFast® lacquered stitching fastener with bonded washer

Low profile TX25 head, use Fixfast RedDrive.



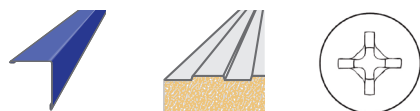
Fastener Code

DF2-SSA4-P-S15-6.3 x 25 + colour

Quadcore Karrier fixing for metal flashing to panel

Use DrillFast® lacquered pan head fastener

Pan head, 2-PP drive.



Fastener Code

DF3-SS-CF-L-4.8 x 25 + colour

Quadcore Karrier air/vapour sealant

Use Seelex BR gun grade butyl rubber sealant



Sealant Code	Cartridge Size (ml)	Colour
SEELEX-BR	380	Grey or White

Quadcore Karrier internal air sealing tape

Use PVC foam air sealing tape



Sealant Code	Thickness x Width (mm)	Roll Length (m)
AST-6 x 20 x 12	6 x 20	12

Quadcore Karrier external face sealant

Use Foilband foil faced strip sealant



Sealant Code	Roll length (m)	Roll width (mm)	Colour
FOILBAND-50	10	50	Silver foil on white butyl
FOILBAND-100	10	100	Silver foil on white butyl

Quadcore Karrier fire resistant construction foam for filling ridge and gable junctions

Use Firefoam B1



Sealant Code	Cartridge Size (ml)	Fitting
FIREFOAM-B1-GUN	750	Screwtop
FIREFOAM-B1-HAND	750	Manual

Accessories

GreenDrive

One-piece drive socket for DrillFast® stainless fasteners, supports the head for easy accurate driving.

Product Code: GREENDRIVE



RedDrive

One-piece drive socket for DrillFast® low profile fasteners, supports the head for easy accurate driving.

Product Code: REDDRIVE

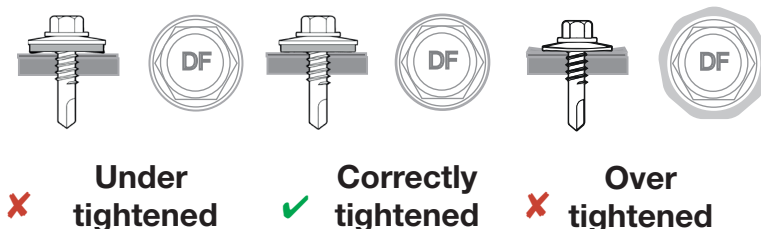


Many other tools and accessories are available.

Please see the current Fixfast Product Directory, go to www.fixfast.com, or ask the Fixfast customer service team.

Installation and handling

- **Installation tool**
Variable speed electric screwdriver
- **Installation drive**
Fixfast GreenDrive or Fixfast RedDrive depending on the fastener being used
- **Installation speed**
1500rpm
- **Correct Installation**
Fasteners should be driven within three degrees of perpendicular to the surface of the fastened material. Use a depth-setting nosepiece to avoid over-driving, and do not over-tighten. Variants with bonded washers should not have the rubber compressed to less than two-thirds of its uncompressed height. Care should be taken when engaging and disengaging from the fastener and to avoid damage to the protective coating.



- **Handling**
Fasteners may have sharp edges, and the use of power tools can be dangerous. Use personal protective equipment. Store fasteners in dry conditions. Inspect each fastener before use and do not use damaged fasteners. Replace any fasteners which appear to have been installed incorrectly.

DF3-SSA4-P-HT-SFW-5.5 Range

Material	1.4401 stainless steel (316M), with steel case hardened welded point, A4 stainless steel plate
Coating	Organic
Drilling Capacity	1.2mm - 3.0mm steel
Pull-out Values (axial load resistance)	
Substrate	Characteristic value
1.2mm Steel	1.30kN
2.0mm Steel	2.62kN
3.0mm Steel	4.76kN
Softwood 35mm Embedment	3.57kN

DF12-SSA4-P-HT-SFW-Range

Material	1.4401 stainless steel (316M), with steel case hardened welded point, A4 stainless steel plate
Coating	Organic
Head Type	Low profile
Drilling Capacity	4.0mm - 12.0mm steel
Pull-out Values (axial load resistance)	
Substrate	Characteristic value
4.0mm Steel	4.02kN
6.0mm Steel	5.44kN
8.0mm Steel	5.59kN
12.0mm Steel	5.59kN

DF12-SS-HT-5.5 Range

Material	1.4301 Stainless steel (304M), with steel case hardened welded point
Coating	Organic
Drilling Capacity	4.0mm - 12.0mm steel
Pull-out Values (axial load resistance)	
Substrate	Characteristic value
4.0mm Steel	2.80kN
6.0mm Steel	3.09kN
8.0mm Steel	6.89kN
12.0mm Steel	6.89kN

DF25-SSA4-HT-6.3 Range

Material	1.4401 stainless steel (316M), with case hardened welded point
Coating	Organic
Drilling Capacity	8.0mm - 25.0mm steel
Pull-out Values (axial load resistance)	
Substrate	Characteristic value
8.0mm Steel	10.82kN
12.0mm Steel	10.82kN
25mm Steel	10.82kN

DF2-SSA4-PL-6.3 x 25

Material	1.4401 stainless steel (316M), with steel case hardened welded point
Coating	Organic
Drilling Capacity	Max 2 x 1.0mm S275 steel
Pull-out Values (axial load resistance)	
Substrate	Characteristic value
0.5mm Steel	0.60kN

DF3-SS-CF-L-4.8 x 25

Material	1.4301 stainless steel (304M), with steel case hardened welded point
Coating	Organic
Drilling Capacity	1.2mm - 3.0mm steel
Pull-out Values (axial load resistance)	
Substrate	Characteristic value
1.2mm Steel	1.12kN
2.0mm Steel	2.19kN
3.0mm Steel	4.10kN

Fastener Data

- + All dimensions are subject to manufacturing tolerances.
- + Performance values are tested and calculated according to Eurocode procedures and appropriate safety factors should be applied in any calculations using these values.

Fastener Selection

- + Recommended fastener lengths are calculated using standard tolerances for the fasteners and the combination of materials in the build-up.
- + If there is distortion in the supporting construction, or other non-standard application detail, longer fasteners may be necessary than those shown. Always check the actual circumstances before deciding on a particular length.

Further Assistance

- + For any enquiry, or to discuss your requirements with someone knowledgeable, call the Fixfast customer service team on **0800 304 7616**
- + Full literature is available for the Fixfast range, or visit **www.fixfast.com**
- + Other performance data may be available on request. For more unusual applications, tests can be carried out in our in-house technical centre to provide the necessary data.
- + Site visits are also possible, particularly for pull-out performance into concrete, masonry or other variable substrates. Please ask for a Site Visit Request form if you think this service would be useful.
- + CAD files of fasteners are available on request for inclusion in drawings.

The information contained in this document is based on the specification of the Kingspan Quadcore Karrier system and Fixfast's product data. It is provided in good faith but Fixfast cannot be held liable for any errors. Performance is dependent on adherence to the conditions and instructions contained in Fixfast's Technical Data Sheets for the products shown. Performance values should be approved by a qualified engineer, and Fixfast recommend preliminary tests for any application where variation is possible in the materials or substrates involved.



Merlin House
Seven Mile Lane
Borough Green
Sevenoaks
Kent
TN15 8QY

Enquiries
0800 304 7616
International
+44 (0) 1732 882387
Fax
0845 450 7486
Email
info@fixfast.com



Certificate number 10905
ISO 9001, ISO 14001
OHSAS 18001