

DuraMet®

Sliding cleats

Application

- For fully supported metal roofing systems

Key Features

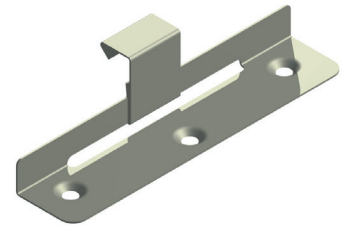
- Manufactured from A2/304 grade stainless steel for optimum corrosion resistance
- Supplied with prepunched flat or countersunk holes
- Available in 0.4mm or 0.6mm gauge stainless steel

Datasheet

Document Reference: DS-FS-DMS-7.17/01

DuraMet® Sliding cleats

Code	To suit seam height (mm)	Gauge (mm)	Hole type
DM-04-25-S	25	0.4	Flat
DM-04-25-S-CSK	25	0.4	Countersunk
DM-06-25-S	25	0.6	Flat
DM-06-25-S-CSK	25	0.6	Countersunk



DM-06-25-S-CSK

Code	Individual bearing load (kN)	Shared bearing load (kN)
SLIDING CLEAT	0.65	0.40

FIXFAST Ltd | Merlin House | Seven Mile Lane | Borough Green | Sevenoaks | Kent | TN15 8QY
T: 0845 450 7483 | F: 0845 450 7486 | E: info@fixfast.com | W: www.fixfast.com

*Fixfast is a trading name of FIXFAST Ltd which is a company registered in England & Wales with number 09481218.
 The registered office is Fixfast, Merlin House, Seven Mile Lane, Borough Green, Sevenoaks, Kent, United Kingdom TN15 8QY*

©Fixfast September 2017. All rights reserved. Due to a policy of continual development, Fixfast reserves the right to change product specification and descriptions without prior notice.



Certificate Number 10905
 ISO 9001: 2008
 ISO 14001: 2004
 BS OHSAS 18001: 2007