

Maximum reliability. Minimum fuss.



Technical Data Sheet

Screwdriving Accessories

Specialist Tools



Application

- + A variety of sockets and drive bars to suit every Fixfast fastener product

Key Features

- + Robust construction for longevity
- + Magnetic or non magnetic for carbon or stainless steel fasteners

Drive Systems options

Code	To install	Type	Drive	Magnetic
37582	6.35mm (1/4") Hex	Integral Socket	1/4" Hex	✓
37583	8mm (5/16") Hex	Integral Socket	1/4" Hex	✓
37586	8mm (5/16") Hex	Integral Socket	1/4" Hex	
37584	9.5mm (3/8") Hex	Integral Socket	1/4" Hex	✓
37587	9.5mm (3/8") Hex	Integral Socket	1/4" Hex	
VT 10065M	10.0mm Hex	Integral socket	1/4" Hex	✓
VT 13055M	13.0mm (1/2") Hex	Integral socket	1/4" Hex	✓
MF1165	11mm Bi-Hex	Integral socket	1/4" Hex	
MF11200	11mm Bi-Hex	Integral socket	1/4" Hex	
MF11285	11mm Bi-Hex	Integral socket	1/4" Hex	



Integral Sockets

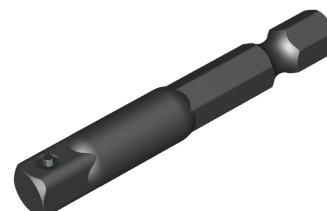
Code	To install	Type	Drive	Also needs	Magnetic
M1E08	6.35mm (1/4") Hex	Socket	1/4" Square	Drive Extension	✓
M1P10	8mm (5/16") Hex	Socket	1/4" Square	Drive Extension	✓
1P10	8mm (5/16") Hex	Socket	1/4" Square	Drive Extension	
M1P12	9.5mm (3/8") Hex	Socket	1/4" Square	Drive Extension	✓
1P12	9.5mm (3/8") Hex	Socket	1/4" Square	Drive Extension	



Sockets for drive extensions

Drive extensions

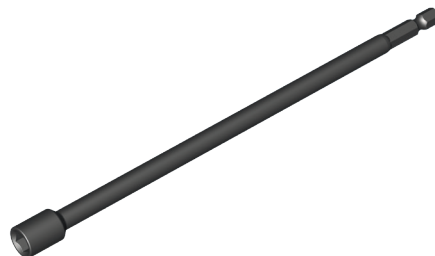
Code	Drive extension length (mm)	To fit	wDrive
EX250-2	50 (2")	1/4" Hex	1/4" Square
EX250-4	100 (4")		
EX250-6	150 (6")		
EX250-8	200 (8")		
EX250-12	300 (12")		
EX370-2	50 (2")		3/8" Square



Drive extensions

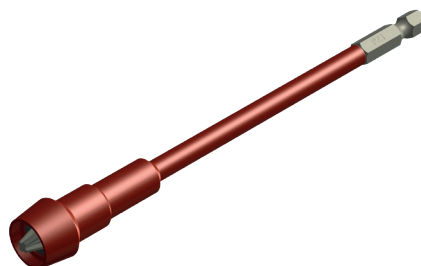
Extended integral sockets

Code	Length (mm)	To install
EIS-6	150	8mm hex
EIS-8	200	8mm hex
EIS-12	300	8mm hex



Topdek Installation tool

Product code	Description
TD - DRIVE BAR 150mm	For installation of Topdek fasteners 3-PZD drive
TD - DRIVE BAR 200mm	





Merlin House
Seven Mile Lane
Borough Green
Sevenoaks
Kent
TN15 8QY

Enquiries

0800 304 7616

International

+44 (0) 1732 882387

Fax

0845 450 7486

Email

info@fixfast.com



Certificate number 10905
ISO 9001, ISO 14001
ISO 45001