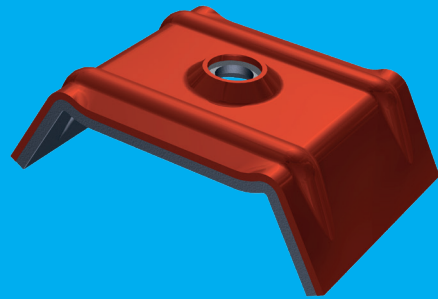


Maximum reliability. Minimum fuss.



Technical Data Sheet



Saddle Washer HS

Fastener Systems

For rooflight and roof sheeting systems

Application

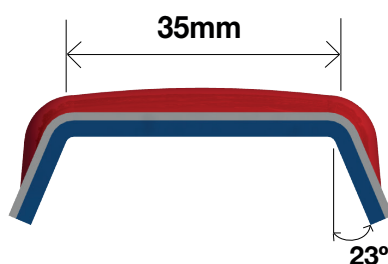
- + For use on rooflight and roof sheet systems where fixing through the crown profile is necessary

Key Features

- + Precisely engineered to fit snugly over profiles
- + Gives ultimate seal whilst reducing risk of crown spaying or crushing
- + Standard stock item listed overleaf

Dimensions

Code	To suite profile	Colour	Hole diameter (mm)
SDW - HSKS1000RW	Kingspan KS1000 RW	04E53 Poppy Red	7
SDW - HSKS1000RW	Kingspan KS1000 RW	10A05 Goosewing Grey	7
SDW - HSKS1000RW	Kingspan KS1000 RW	RAL9006 Metallic Silver	7



Specification

EPDM rubber bonded to 1.0mm polyester powder coated aluminium

Available with M7 hole for use with high thread fasteners

Recommended that a 19mm bonded washer is used in conjunction with saddle washer



Merlin House
Seven Mile Lane
Borough Green
Sevenoaks
Kent
TN15 8QY

Enquiries

0845 450 7483

International

+44 (0) 1732 882387

Fax

0845 450 7486

Email

info@fixfast.com



Certificate number 10905
ISO 9001, ISO 14001
OHSAS 18001