

Stainless steel hex set screws, nuts and washers

Application

- General construction

Key Features

- A2/304 stainless steel for durability
- Wide range of sizes
- Lock nuts with nylon inserts available
- All lengths are fully threaded to suit a wide variety of applications

Datasheet

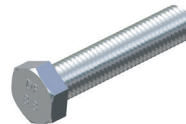
Document Reference: DS-FS-SSHS-04.24/02

01 FASTENER SYSTEMS
Stainless hex set screws, nuts and
washers

Stainless steel set screws nuts and washers

Stainless steel high tensile hex set screws		
Code	Socket size (mm)	Multiples of
SET-SS-M6 x 25	10	100
SET-SS-M6 x 30		
SET-SS-M6 x 40		
SET-SS-M8 x 25	13	100
SET-SS-M8 x 30		
SET-SS-M8 x 40		
SET-SS-M8 x 50		
SET-SS-M8 x 60		
SET-SS-M8 x 70		50
SET-SS-M8 x 80		
SET-SS-M8 x 90		
SET-SS-M8 x 100		
SET-SS-M8 x 110		
SET-SS-M8 x 120		
SET-SS-M8 x 130		
SET-SS-M8 x 140		
SET-SS-M8 x 150		
SET-SS-M8 x 160		
SET-SS-M8 x 170		
SET-SS-M8 x 180		
SET-SS-M8 x 190		
SET-SS-M8 x 200		20
SET-SS-M10 x 25		17
SET-SS-M10 x 30		
SET-SS-M10 x 40		
SET-SS-M10 x 50		
SET-SS-M10 x 60		
SET-SS-M10 x 70	50	
SET-SS-M10 x 80		
SET-SS-M10 x 90		
SET-SS-M10 x 100		
SET-SS-M10 x 110		
SET-SS-M10 x 120		
SET-SS-M10 x 130		
SET-SS-M10 x 140		
SET-SS-M10 x 150		
SET-SS-M10 x 160		
SET-SS-M10 x 170		
SET-SS-M10 x 180		
SET-SS-M10 x 190		
SET-SS-M10 x 200	20	
SET-SS-M10 x 210		
SET-SS-M10 x 220		
SET-SS-M10 x 230		

Stainless steel high tensile hex set screws		
Code	Socket size (mm)	Multiples of
SET-SS-M12 x 25	19	100
SET-SS-M12 x 30		
SET-SS-M12 x 40		
SET-SS-M12 x 50		
SET-SS-M12 x 60		
SET-SS-M12 x 70		50
SET-SS-M12 x 80		
SET-SS-M12 x 90		
SET-SS-M12 x 100		
SET-SS-M12 x 110		
SET-SS-M12 x 120		
SET-SS-M12 x 130		
SET-SS-M12 x 140		
SET-SS-M12 x 150		
SET-SS-M12 x 160		
SET-SS-M12 x 170		
SET-SS-M12 x 180		
SET-SS-M12 x 190		
SET-SS-M12 x 200		20

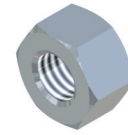


SET-SS

Stainless steel set screws nuts and washers

Stainless steel hex nuts

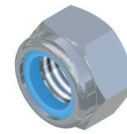
Code	Socket size (mm)	Multiples of
HEX NUTS-SS-M6	10	100
HEX NUTS-SS-M8	13	
HEX NUTS-SS-M10	17	
HEX NUTS-SS-M12	19	



HEX NUTS-SS

Stainless steel lock nuts

Code	Socket size (mm)	Multiples of
NYLOC NUTS-SS-M6	10	100
NYLOC NUTS-SS-M8	13	
NYLOC NUTS-SS-M10	17	
NYLOC NUTS-SS-M12	19	



NYLOC NUTS-SS

Stainless steel washers

Code	Inside diameter (mm)	Outside diameter (mm)	Multiples of
RFW-SS-M6 x 18	6.6	18	100
RFW-SS-M8 x 21	8.4	21	
RFW-SS-M10 x 21	10.5	21	
RFW-SS-M12 x 24	12.6	24	



RFW-SS

FIXFAST Ltd | Merlin House | Seven Mile Lane | Borough Green | Sevenoaks | Kent | TN15 8QY
 T: 0845 450 4783 | F: 0845 450 7486 | E: info@fixfast.com | W: www.fixfast.com

Fixfast is a trading name of FIXFAST Ltd which is a company registered in England & Wales with number 09481218.
 The registered office is Fixfast, Merlin House, Seven Mile Lane, Borough Green, Sevenoaks, Kent, United Kingdom TN15 8QY

© Fixfast July 2017. All rights reserved. Due to a policy of continual development, Fixfast reserves the right to change product specification and descriptions without prior notice



Certificate Number 10905
 ISO 9001:2008
 ISO 14001:2004
 BS OHSAS 18001:2007