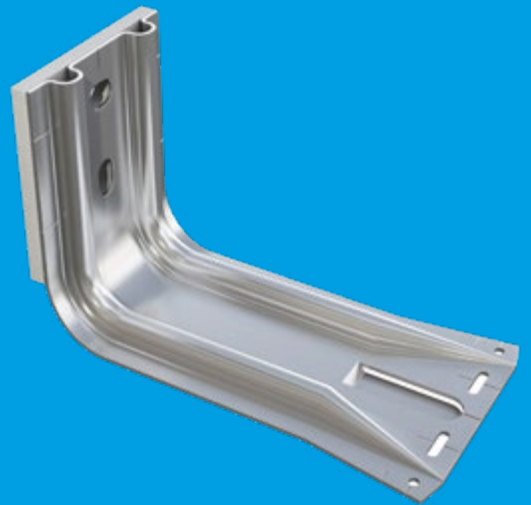


Maximum reliability. Minimum fuss.

 **FIXFAST**

Technical Data Sheet

Facade Support System



Fastener Systems

A complete system of brackets and rails.

Application

- + To support a wide variety of facade and rainscreen finishes
- + Long lengths available for soffit applications

Key Features

- + Low weight, high durability and mechanical strength
- + Thermal pad breaks the thermal path between aluminium structure and building
- + Manufactured from aluminium, A4 or A2 stainless steel
- + Helping hand brackets allow for free expansion

Technical data for aluminium

Material	EN AW-5052 H12
Thickness	2mm
Yield strength	210 N/mm ² / 160 N/mm ²
Modulus of elasticity	70.000 N/mm ²
Thermal Pad Thickness	6mm
ETA number	ETA-17/0461

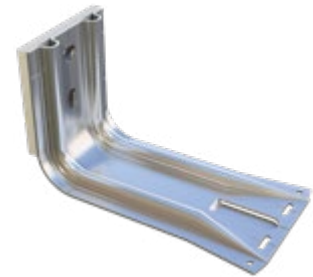
Code	Description	Clad zone min. (mm)	Clad zone max. (mm)
SP-MAX-A-80/40	40mm deep bracket with thermal break	58	85
SP-MAX-A-80/65	65mm deep bracket with thermal break	76	111
SP-MAX-A-80/85	85mm deep bracket with thermal break	96	131
SP-MAX-A-80/110	110mm deep bracket with thermal break	121	156
SP-MAX-A-80/135	135mm deep bracket with thermal break	146	181
SP-MAX-A-80/160	160mm deep bracket with thermal break	171	206
SP-MAX-A-80/170	170mm deep bracket with thermal break	181	216
SP-MAX-A-80/185	185mm deep bracket with thermal break	196	231
SP-MAX-A-80/210	210mm deep bracket with thermal break	221	256
SP-MAX-A-80/240	240mm deep bracket with thermal break	251	286
SP-MAX-A-80/270	270mm deep bracket with thermal break	281	316
SP-MAX-A-80/300	300mm deep bracket with thermal break	311	346
SP-MAX-A-80/330	330mm deep bracket with thermal break	341	376
SP-MAX-A-80/350	350mm deep bracket with thermal break	361	396
SP-MAX-A-80/360	360mm deep bracket with thermal break	371	406
SP-MAX-A-80/390	390mm deep bracket with thermal break	401	436
SP-MAX-A-80/420	420mm deep bracket with thermal break	431	466
SP-MAX-A-80/450	285mm deep bracket with thermal break	461	496
SP-MAX-A-80/480	480mm deep bracket with thermal break	491	526
SP-MAX-A-80/510	510mm deep bracket with thermal break	521	556
SP-MAX-A-80/540	540mm deep bracket with thermal break	551	586
SP-MAX-A-80/570	570mm deep bracket with thermal break	581	616
SP-MAX-A-80/600	600mm deep bracket with thermal break	611	646
SP-MAX-A-80/630	630mm deep bracket with thermal break	641	676
SP-MAX-A-80/660	660mm deep bracket with thermal break	671	706
SP-MAX-A-80/690	690mm deep bracket with thermal break	701	736
SP-MAX-A-80/720	720mm deep bracket with thermal break	731	766
SP-MAX-A-80/750	750mm deep bracket with thermal break	761	796
SP-MAX-A-80/780	780mm deep bracket with thermal break	791	826
SP-MAX-A-80/810	810mm deep bracket with thermal break	821	856
SP-MAX-A-80/840	840mm deep bracket with thermal break	851	886
SP-MAX-A-80/870	870mm deep bracket with thermal break	881	916
SP-MAX-A-80/900	900mm deep bracket with thermal break	911	946



Technical data for A4 stainless steel

Material	1.4404 stainless steel
Thickness	2mm
Modulus of elasticity	200.00 N/mm ²
Thermal Pad Thickness	6mm
ETA number	ETA-17/0461

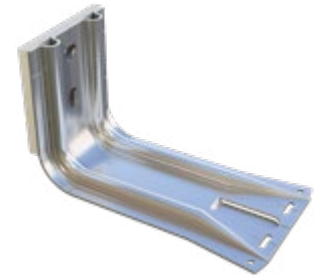
Code	Description	Clad zone min (mm)	Clad zone max. (mm)
SP-MAX-SSA4-80/85	85mm deep bracket with thermal break	96	131
SP-MAX-SSA4-80/110	110mm deep bracket with thermal break	121	156
SP-MAX-SSA4-80/125	125mm deep bracket with thermal break	136	171
SP-MAX-SSA4-80/135	135mm deep bracket with thermal break	146	181
SP-MAX-SSA4-80/160	160mm deep bracket with thermal break	171	206
SP-MAX-SSA4-80/170	170mm deep bracket with thermal break	181	216
SP-MAX-SSA4-80/185	185mm deep bracket with thermal break	196	231
SP-MAX-SSA4-80/210	210mm deep bracket with thermal break	221	256
SP-MAX-SSA4-80/225	225mm deep bracket with thermal break	236	301
SP-MAX-SSA4-80/240	240mm deep bracket with thermal break	251	286
SP-MAX-SSA4-80/255	255mm deep bracket with thermal break	266	301
SP-MAX-SSA4-80/270	270mm deep bracket with thermal break	281	316
SP-MAX-SSA4-80/285	285mm deep bracket with thermal break	296	331
SP-MAX-SSA4-80/300	300mm deep bracket with thermal break	311	346
SP-MAX-SSA4-80/330	330mm deep bracket with thermal break	341	376
SP-MAX-SSA4-80/360	360mm deep bracket with thermal break	371	406
SP-MAX-SSA4-80/390	390mm deep bracket with thermal break	401	436
SP-MAX-SSA4-80/420	420mm deep bracket with thermal break	431	466
SP-MAX-SSA4-80/450	450mm deep bracket with thermal break	461	496
SP-MAX-SSA4-80/480	480mm deep bracket with thermal break	491	526
SP-MAX-SSA4-80/510	510mm deep bracket with thermal break	521	556
SP-MAX-SSA4-80/540	540mm deep bracket with thermal break	551	586
SP-MAX-SSA4-80/570	570mm deep bracket with thermal break	581	616
SP-MAX-SSA4-80/600	600mm deep bracket with thermal break	611	646



Technical data for A2 stainless steel

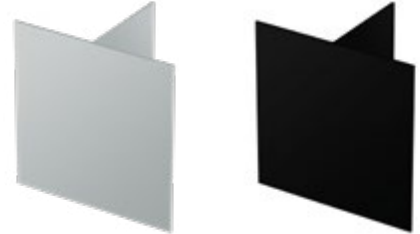
Material	1.4301 stainless steel
Thickness	2mm
Modulus of elasticity	200.00 N/mm ²
Thermal Pad Thickness	6mm
ETA number	ETA-17/0461

Code	Description	Clad zone min. (mm)	Clad zone max. (mm)
SP-MAX-SSA2-80/85	85mm deep bracket with thermal break	96	131
SP-MAX-SSA2-80/110	110mm deep bracket with thermal break	121	156
SP-MAX-SSA2-80/125	125mm deep bracket with thermal break	136	171
SP-MAX-SSA2-80/135	135mm deep bracket with thermal break	146	181
SP-MAX-SSA2-80/160	160mm deep bracket with thermal break	171	206
SP-MAX-SSA2-80/170	170mm deep bracket with thermal break	181	216
SP-MAX-SSA2-80/185	185mm deep bracket with thermal break	196	231
SP-MAX-SSA2-80/210	210mm deep bracket with thermal break	221	256
SP-MAX-SSA2-80/225	225mm deep bracket with thermal break	236	301
SP-MAX-SSA2-80/240	240mm deep bracket with thermal break	251	286
SP-MAX-SSA2-80/255	255mm deep bracket with thermal break	266	301
SP-MAX-SSA2-80/270	270mm deep bracket with thermal break	281	316
SP-MAX-SSA2-80/285	285mm deep bracket with thermal break	296	331
SP-MAX-SSA2-80/300	300mm deep bracket with thermal break	311	346
SP-MAX-SSA2-80/330	330mm deep bracket with thermal break	341	376
SP-MAX-SSA2-80/360	360mm deep bracket with thermal break	371	406
SP-MAX-SSA2-80/390	390mm deep bracket with thermal break	401	436
SP-MAX-SSA2-80/420	420mm deep bracket with thermal break	431	466
SP-MAX-SSA2-80/450	450mm deep bracket with thermal break	461	496
SP-MAX-SSA2-80/480	480mm deep bracket with thermal break	491	526
SP-MAX-SSA2-80/510	510mm deep bracket with thermal break	521	556
SP-MAX-SSA2-80/540	540mm deep bracket with thermal break	551	586
SP-MAX-SSA2-80/570	570mm deep bracket with thermal break	581	616
SP-MAX-SSA2-80/600	600mm deep bracket with thermal break	611	646



T bar 120mm x 60mm

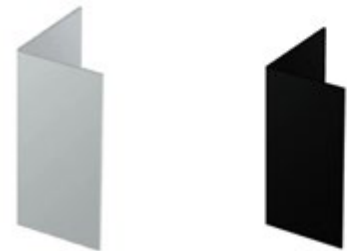
Product Code	Description	Material Grade	Length (m)
SP-PT-A-120/60/2.0/3	T profile 2.0mm thick (flat)	EN-AW6063 T66	3
SP-PT-A-120/60/2.0/6	T profile 2.0mm thick (flat)	EN-AW6063 T66	6
SP-PT-A-120/60/2.0/3 BLACK	Black anodised T profile 2.0mm thick (flat)	EN-AW6063 T66	3
SP-PT-A-120/60/2.0/6 BLACK	Black anodised T profile 2.0mm thick (flat)	EN-AW6063 T66	6



For the attachment of brackets to rails, we recommend the DF3-SS-4.8 x 25 fastener

L rail 40mm x 60mm

Product Code	Description	Material Grade	Length (m)
SP-PL-A-40/60/2.0/3	L profile 2.0mm thick (flat)	EN-AW6063 T66	3
SP-PL-A-40/60/2.0/6	L profile 2.0mm thick (flat)	EN-AW6063 T66	6
SP-PL-A-40/60/2.0/3 BLACK	Black anodised L profile 2.0mm thick (flat)	EN-AW6063 T66	3
SP-PL-A-40/60/2.0/6 BLACK	Black anodised L profile 2.0mm thick (flat)	EN-AW6063 T66	6



For the attachment of brackets to rails, we recommend the DF3-SS-4.8 x 25 fastener

Bracket adaptor plate

Product Code	Description
SP-MAX-ADAPTOR PLATE	Adaptor plate for increasing the strength of the bracket





Merlin House
Seven Mile Lane
Borough Green
Sevenoaks
Kent
TN15 8QY

Enquiries

0800 304 7616

International

+44 (0) 1732 882387

Fax

0845 450 7486

Email

info@fixfast.com

