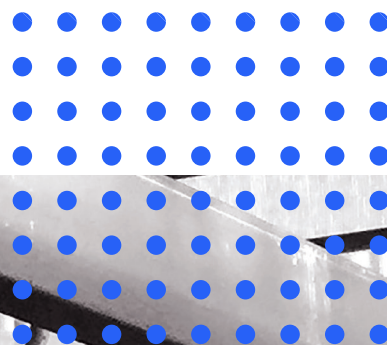


SELECTOR GUIDE

Maximum reliability. Minimum fuss.

Ayrshire Steel Framing



Fastener Systems and Sealing Products




Fixfast design, manufacture and supply specialist building fasteners and components for the walls and roofs of industrial, commercial and larger residential buildings. We collaborate with major building envelope system manufacturers, such as Ayrshire, to provide them and their clients with engineered fastening and sealing solutions.

This selector guide has been created as an easy to use reference document, identifying the most common fasteners and components for use when installing the Ayrshire Steel Framing system.

Full technical data for these products along with application uses can be found on our website at www.fixfast.com by searching for the product.

Our specification team can assist in providing NBS specifications for specific projects, whilst our customer services team can answer questions regarding the usage or ordering of Fixfast products.

If you have any queries regarding our products or services then please do contact our customer services team on +44 (0) 1732 882387 or by emailing sales@fixfast.com.



Full technical data for these products along with application uses can be found on our website at www.fixfast.com by searching for the product.



Contents

Products for specific applications	03
Accessories	08
Technical notes	09

Fixing Ayrshire Steel Framing to hot rolled steel with a flush finish 4.0 - 12mm

Use DrillFast® carbon steel fasteners

Use M490-2 bit holder and 3 PZD bit.



Fastener code carbon

DF12-CF-5.5 x 38

Fixing Ayrshire Steel Framing to hot rolled steel with a non-flush finish 4.0 - 12mm

Use DrillFast® carbon steel fasteners

Use YellowDrive.



Fastener code carbon

DF12-5.5 x 38

Fixing Ayrshire Steel Framing to hot rolled steel connections 8.0 - 25mm thick

Use DrillFast® carbon steel fasteners

Use YellowDrive.



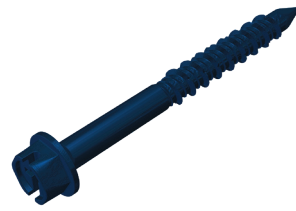
Fastener Carbon

DF25-6.3 x 65

Fixing Ayrshire Steel Framing to concrete

Use TuffFast

8mm Hex head - use YellowDrive.



Fastener code

HTF-6.3x32

Ayrshire Steel Framing to SFS connections with a flush finish 1.2 - 5mm

Use DrillFast® carbon steel fasteners

Use M490-2 bit holder with 2PZD bit.



Fastener code

DF5-CF-5.5x22

Ayrshire Steel Framing to SFS connections with a non flush finish 1.2 - 3.0mm

Use DrillFast® carbon steel fasteners

Use Fixfast YellowDrive.



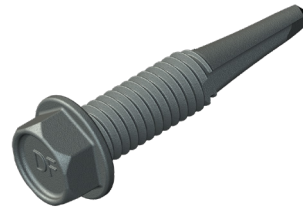
Fastener code

DF3-5.5x25

Ayrshire Steel Framing to SFS connections with a non flush finish 3.0 - 8.0mm

Use DrillFast® carbon steel fasteners

Use Fixfast YellowDrive.



Fastener code

DF8-5.5x28

Fixing sheathing board/timber to Ayrshire Steel Framing SFS 1.2 - 3.0 mm

Use DrillFast® carbon steel fasteners

Use M490-2 bit holder with 2PZD bit.



Build up (mm)

5 - 19

Fastener Code

DF3-W-4.8x38

Fixing internal lining to Ayrshire Steel Framing SFS 1.5 - 3.0mm

Use DrillFast® carbon steel fasteners

Use M490-2 bit holder with TX30 bit.



Build up (mm)	Fastener Code
8 - 28	DF3-W-5.5 x 50
8 - 38	DF3-W-5.5 x 60
23 - 58	DF3-W-5.5 x 80
43 - 78	DF3-W-5.5 x 100
63 - 98	DF3-W-5.5 x 120

Fixing internal lining to steel 4.0 - 12.0mm

Use DrillFast® carbon steel fasteners

Use M490-2 bit holder with TX30 bit.



Build up (mm)	Fastener Code
6 - 9	DF12-W-5.5 x 50
6 - 19	DF12-W-5.5 x 60
6 - 44	DF12-W-5.5 x 85
41 - 67	DF12-W-5.5 x 109
62 - 94	DF12-W-5.5 x 135

Fixing brick tie channels through insulation to Ayrshire SFS 1.2 - 3.0mm

Use DrillFast® stainless steel fasteners

Use Fixfast GreenDrive.



Build up thickness (mm)	Fastener Code
36 - 64	DF3-SS-HT-5.5 x 85
51 - 89	DF3-SS-HT-5.5 x 110
61 - 109	DF3-SS-HT-5.5 x 130
81 - 129	DF3-SS-HT-5.5 x 150
96 - 159	DF3-SS-HT-5.5 x 180
131 - 204	DF3-SS-HT-5.5 x 225
181 - 253	DF3-SS-HT-5.5 x 275

Fixing insulation to Ayrshire Steel Framing SFS 1.2 - 3mm

Use DrillFast® stainless steel fasteners

Use Fixfast GreenDrive.



Build up thickness (mm)	Fastener Code
36-64	DF3-SS-HT-5.5 x 85 (with SF-P-70)
51-89	DF3-SS-HT-5.5 x 110 (with SF-P-70)
61-109	DF3-SS-HT-5.5 x 130 (with SF-P-70)
81-129	DF3-SS-HT-5.5 x 150 (with SF-P-70)
96-159	DF3-SS-HT-5.5 x 180 (with SF-P-70)
131-204	DF3-SS-HT-5.5 x 225 (with SF-P-70)
181 - 253	DF3-SS-HT-5.5 x 275 (with SF-P-70)

Accessories

GreenDrive

One-piece drive socket for DrillFast® stainless fasteners, supports the head for easy accurate driving.

Product Code: GREENDRIVE



YellowDrive

One-piece drive socket for DrillFast® carbon fasteners, supports the head for easy accurate driving.

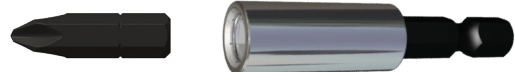
Product Code: YELLOWDRIVE



TX/PZD Drive

Bit holder and TX bit for installing countersunk head wing tip and pan head screws.

Product Code: M490 / TX30 / 2PZD / 3PZD



Socket system

Socket for 13mm hex nut, 9.5mm drive

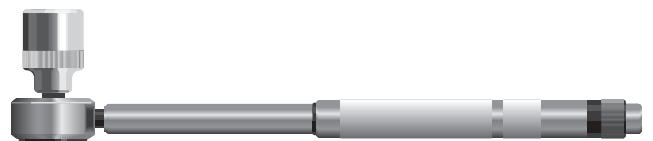
Product Code: 9.5-SOCKET-13

Socket for 17mm hex nut, 9.5mm drive

Product Code: 9.5-SOCKET-17

Torque wrench 9.5mm drive

Product Code: WRENCH-9.5



Many other tools and accessories are available.

Please see the current Fixfast Product Directory, go to **www.fixfast.com**, or ask the Fixfast customer service team.

Technical Notes

Fastener Data

- + All dimensions are subject to manufacturing tolerances.
- + Performance values are tested and calculated according to Eurocode procedures and appropriate safety factors should be applied in any calculations using these values.

Fastener Selection

- + Recommended fastener lengths are calculated using standard tolerances for the fasteners and the combination of materials in the build-up.
- + If there is distortion in the supporting construction, or other non-standard application detail, longer fasteners may be necessary than those shown. Always check the actual circumstances before deciding on a particular length.

Further Assistance

- + For any enquiry, or to discuss your requirements with someone knowledgeable, call the Fixfast customer service team on **+(44) 1732 822 387**
- + Full literature is available for the Fixfast range, visit **www.fixfast.com**
- + Other performance data may be available on request. For more unusual applications, tests can be carried out in our in-house technical centre to provide the necessary data.
- + CAD files of fasteners are available on request for inclusion in drawings.

The information contained in this document is based on the specification of the Kingspan KS1000 RW system and Fixfast's product data. It is provided in good faith but Fixfast cannot be held liable for any errors. Performance is dependent on adherence to the conditions and instructions contained in Fixfast's Technical Data Sheets for the products shown. Performance values should be approved by a qualified engineer, and Fixfast recommend preliminary tests for any application where variation is possible in the materials or substrates involved.



Contact Details:

T: +44 (0) 1732 882387

E: sales@fixfast.com

W: fixfast.com



©Fixfast | July 2024 | Ref: SG-S-ST-7.24/02

