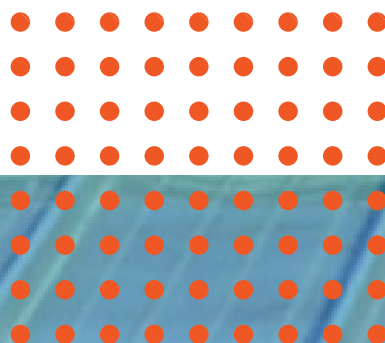


SELECTOR GUIDE

Maximum reliability. Minimum fuss.

R-MER Metal Roof System



Extract from MCRMA Guidance Document GD11

Fixfast design, manufacture and supply specialist building fasteners and components for the walls and roofs of industrial, commercial and larger residential buildings. We collaborate with major building envelope system manufacturers, such as R-MER, to provide them and their clients with engineered fastening and sealing solutions.

This selector guide has been created as an easy to use reference document, identifying the most common fasteners and components for use when installing the R-MER standing seam system.

Full technical data for these products along with application uses can be found on our website at www.fixfast.com by searching for the product.

Our specification team can assist in providing NBS specifications for specific projects, whilst our customer services team can answer questions regarding the usage or ordering of Fixfast products.

If you have any queries regarding our products or services then please do contact our customer services team on +44 (0) 1732 882387 or by emailing sales@fixfast.com.

Full technical data for these products along with application uses can be found on our website at www.fixfast.com by searching for the product.



Contents

Products for specific applications	03
Accessories	09
Technical notes	10

Fixing clips to timber boarding 24mm thick

Use Drillfast® Stainless A2 Stainless steel self drilling fastener



Fastener Code 304/A2 Stainless Steel

DFT-SS-6.0 x 32

Fixing clips to timber sub-frame (min. dimensions 60 x 40mm)

Use Drillfast® Stainless A2 Stainless steel self drilling fastener



Fastener Code 304/A2 Stainless Steel

DFT-SS-6.0 x 40

Fixing clips to steel Z profiles or liners up to 1.6mm thick

Use Drillfast® Stainless A2 Stainless steel self drilling fastener



Fastener Code 304/A2 Stainless Steel

DF3-SS-5.5 x 25

Fixing clips to steel 4mm - 12mm thick

Use Drillfast® Stainless A2 Stainless steel self drilling fastener



Fastener Code 304/A2 Stainless Steel

DF12-SS-5.5 x 40

Find product data
at [fixfast.com](https://www.fixfast.com)

Fixing clips through rigid insulation to steel sub-structure

Use Drillfast® Stainless A2 Stainless steel self drilling fastener

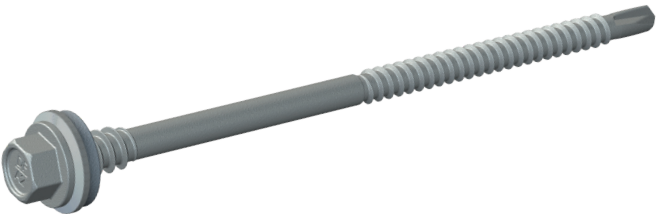


Fastener Code 304/A2 Stainless Steel

DF3-SS-5.5x55

Fixing clips through rigid insulation to steel sub-structure

Use Drillfast® Stainless A2 Stainless steel self drilling fastener



Sizes available	Fastener Code 304/A2 Stainless Steel
85mm	DF3-SS-HT-A15-5.5 x 85
110mm	DF3-SS-HT-A15-5.5 x 110
130mm	DF3-SS-HT-A15-5.5 x 130
150mm	DF3-SS-HT-A15-5.5 x 150
180mm	DF3-SS-HT-A15-5.5 x 180
225mm	DF3-SS-HT-A15-5.5 x 225
275mm	DF3-SS-HT-A15-5.5 x 275

Fixing timber lathing to timber lathing

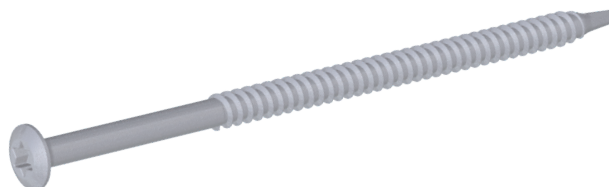
Stainless steel countersunk woodscrew



Fastener Code 304/A2 Stainless Steel
CWS-SS-5.0 x 70
CWS-SS-6.0 x 120
CWS-SS-6.0 x 200

Fixing wooden lathing to steel 0.75 - 1.20mm thick

Use Surefast® A4 Stainless oval head self drilling fastener



Fastener Code 316/A4 Stainless Steel
SF-RS-SSA4-4.8 x 60
SF-RS-SSA4-4.8 x 80

Find product data
at [fixfast.com](https://www.fixfast.com)

Fixing wooden lathing to steel 1.5 - 3.0mm thick

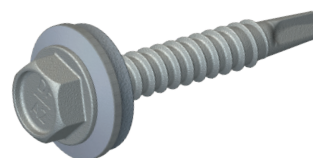
Use Drillfast® Stainless A4 Stainless steel countersunk head self drilling fastener



Fastener Code 304/A2 Stainless Steel
DF3-SS-W-5.5x60
DF3-SS-W-5.5x80

Fixing steel Z profiles to Z profile or liners up to 2.5mm thick

Use Drillfast® Stainless A2 Stainless steel self drilling fastener



Fastener Code 304/A2 Stainless Steel
DF3-SS-A15-5.5x25

Fixing to sheet, trapezoidal sheet, ridge closure etc.

Concealed rivet



Rivet Code

R-AC-CSK-4.8x12

Ridge closure to seam

Large flange rivet



Rivet Code

R-AS-LF-4.8x17

Fixing suspended profiles to seam

Large flange rivet



Rivet Code

R-AS-LF-4.8x17

Accessories

GreenDrive

One-piece drive socket for DrillFast® stainless fasteners, supports the head for easy accurate driving.

Product Code: GREENDRIVE



RedDrive

One-piece drive socket for DrillFast® low profile fasteners, supports the head for easy accurate driving.

Product Code: REDDRIVE



Many other tools and accessories are available.

Please see the current Fixfast Product Directory,
go to **www.fixfast.com**, or ask the Fixfast customer service team.

Technical Notes

Fastener Data

- + All dimensions are subject to manufacturing tolerances.
- + Performance values are tested and calculated according to Eurocode procedures and appropriate safety factors should be applied in any calculations using these values.

Fastener Selection

- + Recommended fastener lengths are calculated using standard tolerances for the fasteners and the combination of materials in the build-up.
- + If there is distortion in the supporting construction, or other non-standard application detail, longer fasteners may be necessary than those shown. Always check the actual circumstances before deciding on a particular length.

Further Assistance

- + For any enquiry, or to discuss your requirements with someone knowledgeable, call the Fixfast customer service team on **+44 (0) 1732 882387**
- + Full literature is available for the Fixfast range, or visit **www.fixfast.com**
- + Other performance data may be available on request. For more unusual applications, tests can be carried out in our in-house technical centre to provide the necessary data.
- + Site visits are also possible, particularly for pull-out performance into concrete, masonry or other variable substrates. Please ask for a Site Visit Request form if you think this service would be useful.
- + CAD files of fasteners are available on request for inclusion in drawings.

The information contained in this document is based on the specification of the R-MER standing seam system and Fixfast's product data. It is provided in good faith but Fixfast cannot be held liable for any errors. Performance is dependent on adherence to the conditions and instructions contained in Fixfast's Technical Data Sheets for the products shown. Performance values should be approved by a qualified engineer, and Fixfast recommend preliminary tests for any application where variation is possible in the materials or substrates involved.

Find product data
at fixfast.com



Contact Details:

T: +44 (0) 1732 882387

E: sales@fixfast.com

W: fixfast.com

