

DuraMet® Cleats



Fixed and shingle cleats

Application

For fully supported metal roofing systems

Key Features

Manufactured from A2/304 grade stainless steel for optimum corrosion resistance

Supplied with pre-punched flat or countersunk holes

Available to suit variety of seam heights

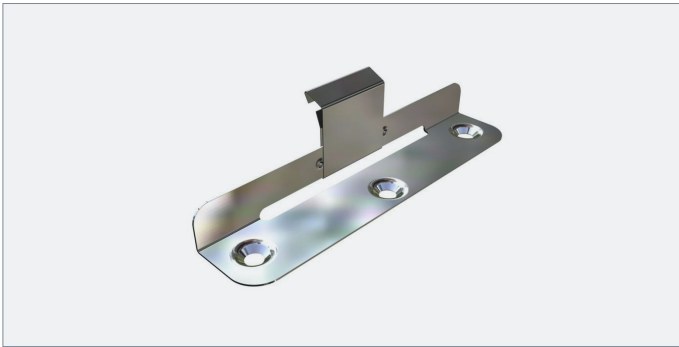
Fixed and Shingle Cleats

Code	To suit seam height (mm)	Gauge (mm)	Hole type
DM-04-25-F	25	0.4	Flat
DM-04-25-F-CSK	25	0.4	Countersunk

Code	Individual bearing load (kN)	Shared bearing load (kN)
FIXED CLEAT	0.65	0.40

Code	Gauge (mm)	Hole type
DM-04-SHINGLE	0.4	Flat

DuraMet® Cleats



Sliding cleats

Application

For fully supported metal roofing systems

Key Features

Manufactured from A2/304 grade stainless steel for optimum corrosion resistance

Supplied with pre-punched flat or countersunk holes

Available in 0.4mm or 0.6mm gauge stainless steel

Sliding Cleats

Code	To suit seam height (mm)	Gauge (mm)	Hole type
DM-04-25-S	25	0.4	Flat
DM-04-25-S-CSK	25	0.4	Countersunk
DM-06-25-S	25	0.6	Flat
DM-06-25-S-CSK	25	0.6	Countersunk

Code	Individual bearing load (kN)	Shared bearing load (kN)
SLIDING CLEAT	0.65	0.40