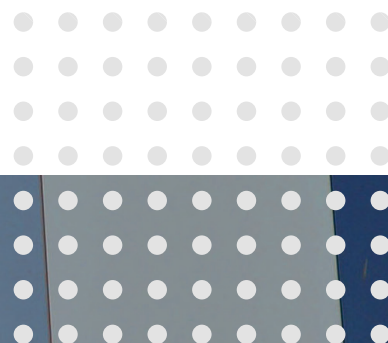


SELECTOR GUIDE

Confidence in every **Connection™**



EUROBOND Rockspan



Fastener Systems and Sealing Products




Fixfast design, manufacture and supply specialist building fasteners and components for the walls and roofs of industrial, commercial and larger residential buildings. We collaborate with major building envelope system manufacturers, such as Eurobond, to provide them and their clients with engineered fastening and sealing solutions.

This selector guide has been created as an easy to use reference document, identifying the most common fasteners and components for use when installing the Eurobond Rockspan system. Specific fastener durability information is available on our product datasheets.

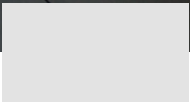

Full technical data for these products along with application uses can be found on our website at www.fixfast.com by searching for the product.

Our specification team can assist in providing NBS specifications for specific projects and our customer services team can answer questions regarding the usage or ordering of Fixfast products.

If you have any queries regarding our products or services then please do contact our customer services team on +44 (0) 1732 882387 or by emailing sales@fixfast.com.



Full technical data for these products along with application uses can be found on our website at www.fixfast.com by searching for the product.



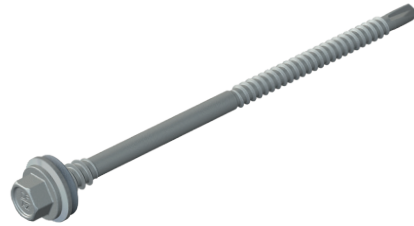
Contents

Products for specific applications	03
Accessories	06
Technical notes	07

Fixing Rockspan to cold rolled steel

Use DrillFast® Stainless DF5-SSA4-HT or DF3-SS-HT fasteners with 15mm bonded washer.

8mm hex head, use Fixfast GreenDrive.



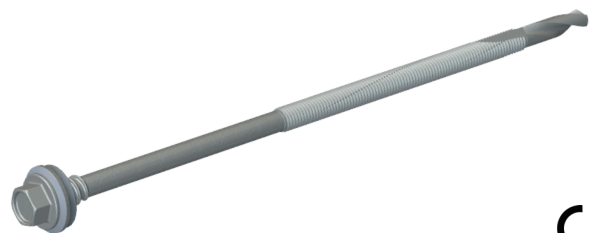
Panel Thickness	Fastener Code 316/A2 Stainless Steel 1.2 - 5mm	Fastener Code 304/A2 Stainless Steel 1.2 - 3mm
75mm	DF5-SSA4-HT-S16-6.3 x 115	DF3-SS-HT-A15-5.5 x 110
100mm	DF5-SSA4-HT-S16-6.3 x 135	DF3-SS-HT-A15-5.5 x 130
125mm	DF5-SSA4-HT-S16-6.3 x 155	DF3-SS-HT-A15-5.5 x 150
150mm	DF5-SSA4-HT-S16-6.3 x 185	DF3-SS-HT-A15-5.5 x 180
175mm	DF5-SSA4-HT-S16-6.3 x 230	DF3-SS-HT-A15-5.5 x 225
200mm	DF5-SSA4-HT-S16-6.3 x 225	DF3-SS-HT-A15-5.5 x 225
240mm	DF5-SSA4-HT-S16-6.3 x 275	DF3-SS-HT-A15-5.5 x 275
300mm	DF5-SSA4-HT-S16-6.3 x 350	-

For fixing panels to timber, please contact Fixfast Customer Service team on +44 (0) 1732 882387

Fixing Rockspan to hot rolled steel

Use DrillFast® Stainless DF15-SSA4-HT or DF12-SS-HT fasteners with 15mm bonded washer.

8mm hex head, use Fixfast GreenDrive.



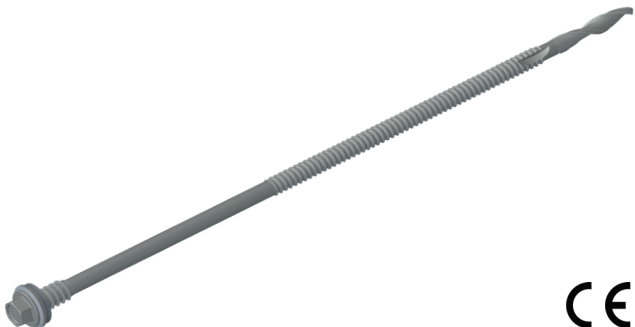
Panel Thickness	Fastener Code 316/A4 Stainless Steel 4mm - 15mm	Fastener Code 304/A2 Stainless Steel 4mm - 12mm
75mm	DF15-SSA4-HT-S16-6.3 x 150	DF12-SS-HT-A15-5.5 x 150
100mm	DF15-SSA4-HT-S16-6.3 x 150	DF12-SS-HT-A15-5.5 x 150
125mm	DF15-SSA4-HT-S16-6.3 x 200	DF12-SS-HT-A15-5.5 x 200
150mm	DF15-SSA4-HT-S16-6.3 x 200	DF12-SS-HT-A15-5.5 x 200
175mm	DF15-SSA4-HT-S16-6.3 x 250	DF12-SS-HT-A15-5.5 x 250
200mm	DF15-SSA4-HT-S16-6.3 x 250	DF12-SS-HT-A15-5.5 x 250
240mm	DF15-SSA4-HT-S16-6.3 x 300	DF12-SS-HT-A15-5.5 x 300
300mm	DF12-SSA4-HT-S16-6.3 x 355*	DF12-SS-HT-S15 6.3 x 355

*DF12 for steel 4mm-12mm

Fixing Rockspan to hot rolled steel

Use DrillFast® Stainless DF25-SSA4-HT fasteners with 15mm bonded washer.

8mm Hex head, use Fixfast GreenDrive.



Panel Thickness	Fastener Code 316/A4 Stainless Steel 8-25mm
100mm	DF25-SSA4-HT-S16-6.3 x 225
125mm	DF25-SSA4-HT-S16-6.3 x 225
150mm	DF25-SSA4-HT-S16-6.3 x 225
175mm	DF25-SSA4-HT-S16-6.3 x 275
200mm	DF25-SSA4-HT-S16-6.3 x 275
240mm	DF25-SSA4-HT-S16-6.3 x 325
300mm	Please consult our Technical team for a solution

Fixing steel angle to concrete

Use APA4 stainless steel expanding anchor.

13mm hex nut: use 13mm socket.



Fastener Code
APA4 -8 x75

Find product data
at [fixfast.com](https://www.fixfast.com)

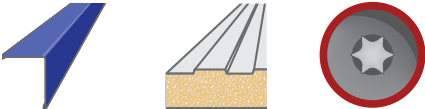
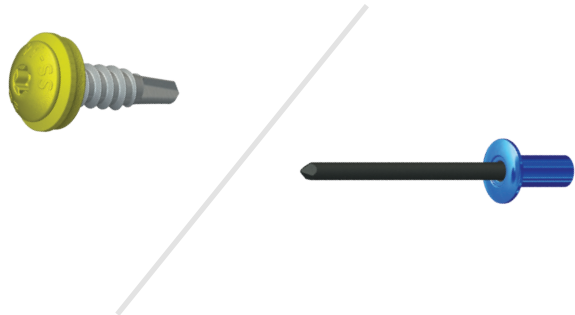
Fixing flashings and trims to Rockspan panel

Use DrillFast® Lacquered stitching fastener with bonded washer or lacquered stainless steel rivet.

Pan TX25 head, use Fixfast RedDrive.

Or:

Lacquered stainless steel rivet: use powered riveting tool.



Fastener Code
DF2-SSA4-PL-A15-6.3 x 25 + colour
R-SS-LAC-4.8 x 15 + colour

Accessories

GreenDrive

One-piece drive socket for 8mm hex-head stainless steel fasteners.

Product Code: GREENDRIVE



RedDrive

One-piece drive socket for DrillFast® low profile fasteners, supports the head for easy accurate driving.

Product Code: REDDRIVE



Many other tools and accessories are available.

Please see the current Fixfast Product Directory, go to **www.fixfast.com**, or ask the Fixfast customer service team.

Find product data
at **fixfast.com**

Technical Notes

Fastener Data

- + All dimensions are subject to manufacturing tolerances.
- + Performance values are tested and calculated according to Eurocode procedures and appropriate safety factors should be applied in any calculations using these values.

Fastener Selection

- + Recommended fastener lengths are calculated using standard tolerances for the fasteners and the combination of materials in the build-up.
- + If there is distortion in the supporting construction, or other non-standard application detail, longer fasteners may be necessary than those shown. Always check the actual circumstances before deciding on a particular length.
- + For details on how to select the correct product for the buildings environment please see our article at - <https://www.fixfast.com/skills-hub/what-fastener-material-should-i-use-for-what-environment>
- + All primary fastener codes shown are with 19mm diameter washers. 19mm is the minimum required for roof applications. Where panels are being fixed as a wall panel, washer diameters can be reduced to 15/16mm diameter. All these are in accordance with Euroclad Group specifications and industry standards such as MCRMA.

Further Assistance

- + For any enquiry, or to discuss your requirements with someone knowledgeable, call the Fixfast customer service team on **+(44) 1732 822 387**
- + Full literature is available for the Fixfast range, visit **www.fixfast.com**
- + Other performance data may be available on request. For more unusual applications, tests can be carried out in our in-house technical centre to provide the necessary data.
- + CAD files of fasteners are available on request for inclusion in drawings.

The information contained in this document is based on the specification of the Eurobond Rockspan system and Fixfast's product data. It is provided in good faith but Fixfast cannot be held liable for any errors. Performance is dependent on adherence to the conditions and instructions contained in Fixfast's Technical Data Sheets for the products shown. Performance values should be approved by a qualified engineer, and Fixfast recommend preliminary tests for any application where variation is possible in the materials or substrates involved.





Contact Details:

Fixfast Ltd
Unit 6
Frank Sando Way
Aylesford
Kent
ME20 7NY

T: +44 (0) 1732 882 387
E: sales@fixfast.com
W: fixfast.com

