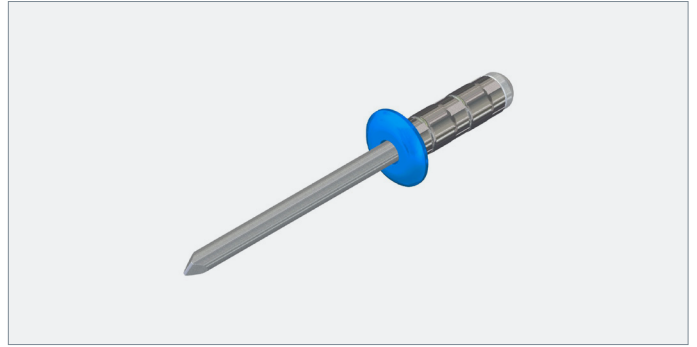
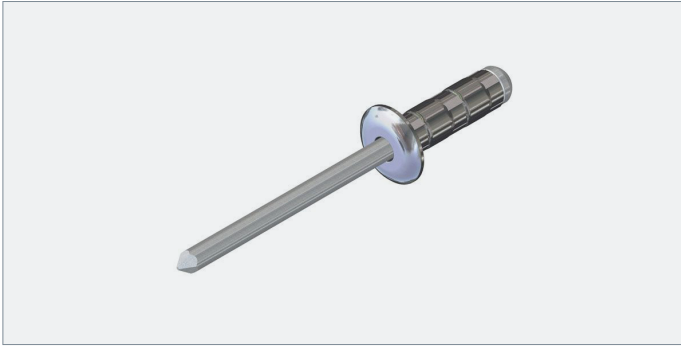


Multi-range Aluminium/Stainless Rivets

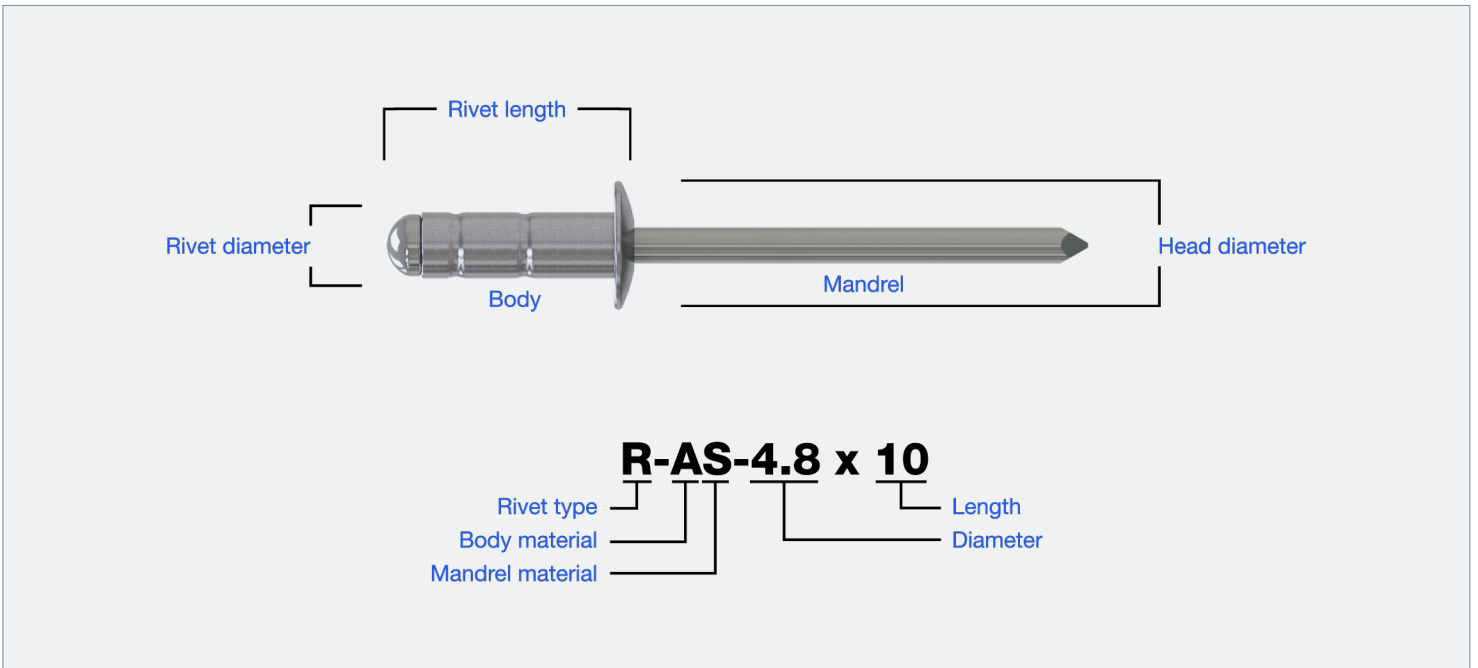


Application

- Sheeting & Cladding
- Facade and rainscreen
- General construction

Key Features

- Allows one rivet to fasten various thicknesses
- High grade aluminium with stainless steel mandrel
- Available in a wide range of RAL and BS colours and other panel colour brands



Multi-range Aluminium/Stainless Rivets

Specification

Code	Body dia. (mm)	Drill size (mm)	Head dia. (mm)	Rivet length (mm)	Mandrel dia. (mm)	Grip range (mm)	Shear (N)	Tensile (N)
R-AS-(LAC)-4.0 x 10				10		1.5 - 6.5		
R-AS-(LAC)-4.0 x 12	4.0	4.1	8.0	12	2.18	4.0 - 9.0	1150	1600
R-AS-(LAC)-4.0 x 17				17		8.5 - 13.5		
R-AS-(LAC)-4.8 x 10				10		1.0-6.0		
R-AS-(LAC)-4.8 x 15	4.8	4.9	9.5	15	2.8	4.5-11.0	1500	2350