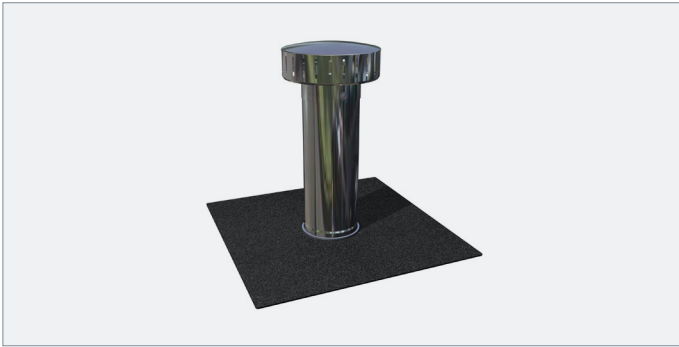


# RyMar® Vent Pipe Covers



## Application

For the weatherproofing of soil vent pipes on new build applications

## Key Features

A cover used in conjunction with vent pipes in flat roof systems

Factory bonded flange to match specific membrane material being used or plain flange for liquid applied systems

These twin skin stainless steel components conceal unsightly pipes

The internal pipe sits within the vent pipe with an 'O' ring seal

Adjustable cover suits pipes up to 600mm high supplied with stainless steel weather cowl

## Specification

Product Code	To suit vent pipe	Diameter of internal pipe (mm)	Diameter of outer pipe (mm)	O-ring seal diameter (mm)	Membrane attachment
RM-VENT-75-SBS	3"	58	95	10	Bituminous
RM-VENT-110-SBS	4"	87	125	8	Bituminous
RM-VENT-160-SBS	6"	145	182	5	Bituminous
RM-VENT-250-SBS*	4"	87	250	8	Bituminous
RM-VENT-75-PVC LT GREY	3"	58	95	10	Light grey PVC
RM-VENT-110-PVC LT GREY	4"	87	125	8	Light grey PVC
RM-VENT-160-PVC LT GREY	6"	145	182	5	Light grey PVC
RM-VENT-250-PVC LT GREY*	4"	87	250	8	Light grey PVC
RM-VENT-75-PVC DK GREY	3"	58	95	10	Dark grey PVC
RM-VENT-110-PVC DK GREY	4"	87	125	8	Dark grey PVC
RM-VENT-160-PVC DK GREY	6"	145	182	5	Dark grey PVC
RM-VENT-250-PVC DK GREY*	4"	87	250	8	Dark grey PVC

Date generated: 09/02/2026

© FIXFAST Ltd 2026. All information is non-binding and without guarantee. Before using the products, all specifications and calculations must be checked by a suitably qualified person and local regulations must be observed. All rights reserved. Due to a policy of continuous development, FIXFAST reserves the right to change product specification and descriptions without notice. Subject to Fixfast's Terms & Conditions.

# RyMar<sup>®</sup> Vent Pipe Covers

## Specification - Continued

Product Code	To suit vent pipe	Diameter of internal pipe (mm)	Diameter of outer pipe (mm)	O-ring seal diameter (mm)	Membrane attachment
RM-VENT-75-PF	3"	58	95	10	No membrane
RM-VENT-110-PF	4"	87	125	8	No membrane

\*Diameter of outerskin is greater to allow for knuckles and roof level obstructions.

Height of vent cover above membrane level: 335 - 600mm