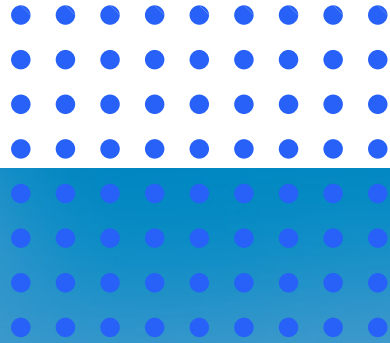


Confidence in every **Connection**[®]

SELECTOR GUIDE



Protex[®] Building Envelope System





Fixfast design, manufacture and supply specialist building fasteners and components for the walls and roofs of industrial, commercial and larger residential buildings. We collaborate with major building envelope system manufacturers, such as Firth Steels, to provide them and their clients with engineered fastening and sealing solutions.


This selector guide has been created as an easy to use reference document, identifying the most common fasteners and components for use when installing the Firth Steels Protex® Building Envelope system.

Full technical data for these products along with application uses can be found on our website at www.fixfast.com by searching for the product.

Our specification team can assist in providing NBS specifications for specific projects, whilst our customer services team can answer questions regarding the usage or ordering of Fixfast products.

Further details such as the technical drawings & installation guide for the Protex® Building Envelope System can be found on the Firth Steels Website at <https://www.firth-steels.co.uk/protex/>.

If you have any queries regarding our products or services then please do contact our customer services team on +44 (0) 1732 882387 or by emailing sales@fixfast.com.



Full technical data for these products along with application uses can be found on our website at www.fixfast.com by searching for the product.



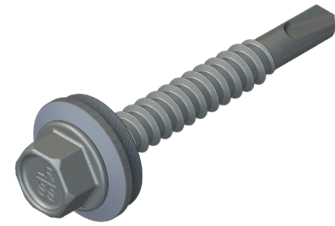
Contents

Products for specific applications	03
Accessories	11
Technical notes	12

Liner sheet fixing to cold rolled steel

Use DrillFast® stainless steel self drilling fasteners for fixing liner sheet roof profile to cold rolled steel.

8mm hex head, use Fixfast GreenDrive.



Fastener Code

DF3-SS-A15-5.5 x 25

Liner sheet fixing to hot rolled steel

Use DrillFast® stainless steel self drilling fasteners for fixing liner sheet roof profile to hot rolled steel.

8mm hex head, use Fixfast GreenDrive.



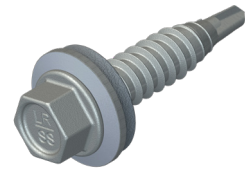
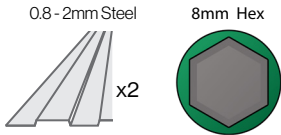
Fastener Code

DF15-SS-A15-5.5 x 40

Liner sheet Stitcher

Use DrillFast® stainless steel stitcher for stitching two metal sheets up to 1mm thick together.

8mm hex head, use Fixfast GreenDrive.



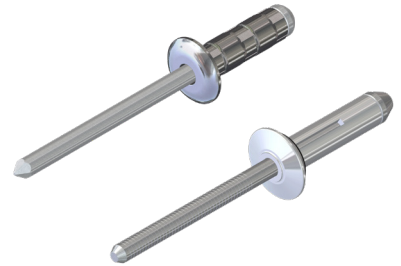
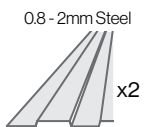
Fastener Code

DF2-SS-LS-A15-6.3 x 25

Liner sheet rivet - for stitching application

Use TriGrip rivets and standard rivets.

Use powered riveting gun for installation.



Fastener Code

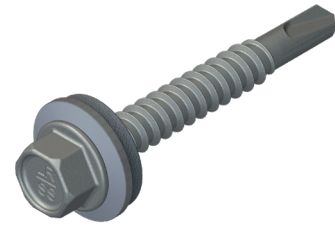
RTG-AA-5.2 x 19

R-SS-4.8 x 10

Bracket fixing to cold rolled steel

Use DrillFast® stainless steel self drilling fasteners for fixing spacer bracket to cold rolled steel.

8mm hex head, use Fixfast GreenDrive.



Fastener Code

DF3-SS-A15-5.5 x 25

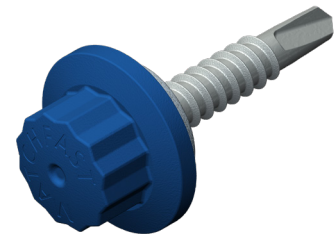
Main outer sheet fixing to cold rolled steel

Use MatchFast® stainless steel self drilling fasteners for fixing outer sheet roof profile to spacer rail.

Use A15 washer for wall application and A19 washer for roof application.

11mm bi-hex head, use Fixfast BlueDrive.

Colour matching available



Fastener Code

MF3-SS-A19-5.5 x 35 (roof application)

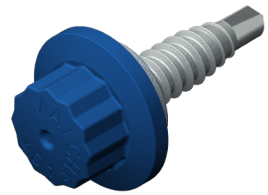
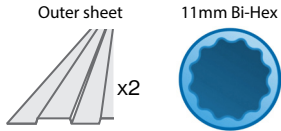
MF3-SS-A15-5.5 x 35 (wall application)

Outer sheet Stitcher

Use MatchFast® stainless steel stitcher for stitching two metal sheets up to 1mm thick together.

11mm bi-hex head, use Fixfast BlueDrive.

Colour matching available



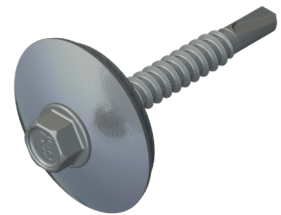
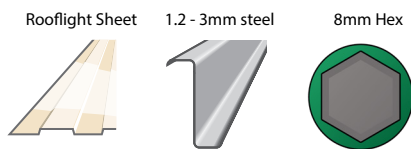
Fastener Code

MF2-SS-A15-6.3 x 25

Rooflight liner sheet fixing to cold rolled steel

Use DrillFast® stainless steel fasteners.

8mm hex head, use Fixfast GreenDrive.



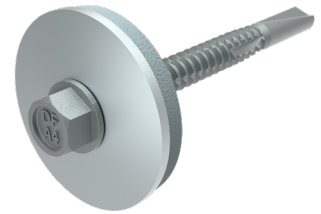
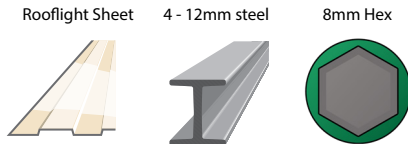
Fastener Code

DF3-SS-A29-5.5 x 35

Rooflight liner sheet fixing to hot rolled steel

Use DrillFast® stainless steel self drilling fasteners for fixing rooflight liner sheet to hot rolled steel.

8mm hex head, use Fixfast GreenDrive.



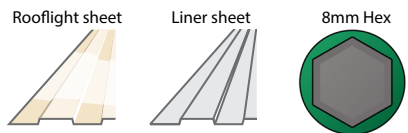
Fastener Code

DF15-SS-A29-5.5 X 40

Rooflight liner sheet Stitcher

Use DrillFast® stainless steel stitcher for stitching two sheets up to 1mm thick together.

8mm hex head, use Fixfast GreenDrive.



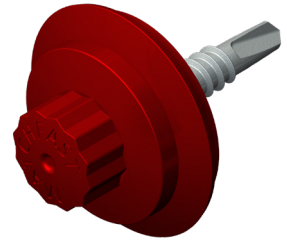
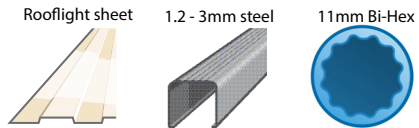
Fastener Code

DF2-SS-A15-6.3 x 25

Rooflight outer sheet fixing to cold rolled steel

Use MatchFast® stainless steel fasteners for fixing rooflight outer sheet to cold rolled steel.

11mm bi-hex head, use Fixfast BlueDrive.



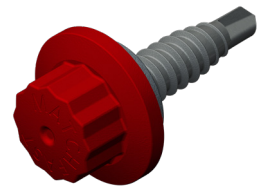
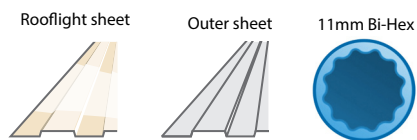
Fastener Code

MF3-SS-L29-5.5 x 35

Rooflight outer sheet Stitcher

Use MatchFast® stainless steel stitcher for stitching two metal sheets up to 1mm thick together.

11mm bi-hex head, use Fixfast BlueDrive.



Fastener Code

MF2-SS-A19-6.3 x 25

Butyl strip sealant for outer sheet end and side lap application. (Also use for end lap application on liner sheet)

Use A Class butyl strip sealant



Sealant Code	Thickness x width (mm)	Roll length (m)	Box Quantity
A-5 x 6 x 9.6	5 x 6	9.6	15 or 30

Polyband butyl tape for side laps in a liner application

Use PB-50 butyl tape



Sealant Code	Thickness x width (mm)	Roll length (m)	Box Quantity
PB-50	1.5 x 50	35	6

Bedding sealant for filler blocks at ridges and hips

Use Seelex BR gun grade solvent release bedding sealant



Fastener Code

SEELEX BR

Installation and Handling

Installation tool

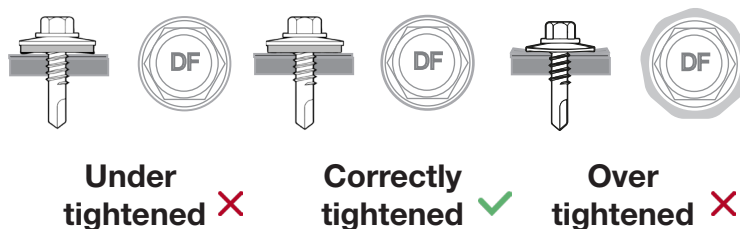
- Impact Drivers should not be used
- Variable speed electric screwdriver

Installation speed

- 1500rpm

Correct Installation

- Fasteners should be driven within three degrees of perpendicular to the surface of the fastened material. Use a depth-setting nosepiece to avoid over-driving, and do not over-tighten. Variants with bonded washers should not have the rubber compressed to less than two-thirds of its uncompressed height. Care should be taken when engaging and disengaging from the fastener to avoid damage to the protective coating.



Handling

- Fasteners may have sharp edges, and the use of power tools can be dangerous. Use personal protective equipment. Store fasteners in dry conditions. Inspect each fastener before use and do not use damaged fasteners. Replace any fasteners which appear to have been installed incorrectly.

Technical Notes

Fastener Data

- All dimensions are subject to manufacturing tolerances.
- Performance values are characteristic failure values and appropriate safety factors should be applied in any calculations using these values.
- Build-up figures are for the specific fastener variant shown, into the maximum thickness of standard substrate. These figures may be increased by the thickness difference for thinner substrates and may not apply for different uses.

Fastener Selection

- Recommended fastener lengths are calculated using standard tolerances for the fasteners and the combination of materials in the build-up.
- If there is distortion in the supporting construction, or other non-standard application detail, longer fasteners may be necessary than those shown. Always check the actual circumstances before deciding on a particular length.

Further Assistance

- For any enquiry, or to discuss your requirements with someone knowledgeable, call the Fixfast customer service team on 0800 304 7616.
- Full literature is available for the Fixfast range, or visit www.fixfast.com.
- Other performance data may be available on request. For more unusual applications, tests can be carried out in our in-house technical centre to provide the necessary data.
- Site visits are also possible, particularly for pull-out performance into concrete, masonry or other variable substrates. Please ask for a Site Visit Request form if you think this service would be useful.
- CAD files of fasteners are available on request for inclusion in drawings.

The information contained in this document is based on the specification of the Firth Steels Protex® Building system and Fixfast's product data. It is provided in good faith but Fixfast cannot be held liable for any errors. Performance is dependent on adherence to the conditions and instructions contained in Fixfast's Technical Data Sheets for the products shown. Performance values should be approved by a qualified engineer, and Fixfast recommend preliminary tests for any application where variation is possible in the materials or substrates involved.



All our technical data can be found on our website against the individual products - including certifications, performance values, and other relevant technical data.

Accessories

Green Drive

One-piece drive socket with retaining clip for 8mm hex head DrillFast stainless steel fasteners.

Product Code: BlueDrive



BlueDrive

One-piece recess drive socket - 11mm bi-hex for MatchFast fasteners, supports the head for easy accurate driving.

Product Code: BlueDrive



Screw Driver

Cordless Electric screw driver with variable torque setting suitable for selfdrilling DrillFast & MatchFast fasteners

Product Code: MAKITA-DFS251Z



Depth Setting Sleeve

Depth setting sleeve for makita electric screw driver to ensure correct installation of DrillFast & MatchFast fasteners.

Product Code: DSS-M-29





Contact Details:

T: +44 (0) 1732 882387

E: info@fixfast.com

W: fixfast.com



0026



0026



0026

