

PRODUCT BRIEF

BAT-X

Indoor/Outdoor Location and Environmental Condition Tracker

The BAT-X is a battery-operated global tracking device utilizing low power LTE CAT-M1 technology with embedded Bluetooth.



RELIABLE

BAT-X provides location data information from multiple on-board sources: GNSS for accurate outdoor location information, and Wi-Fi and Bluetooth for seamless indoor and multi-story location tracking.

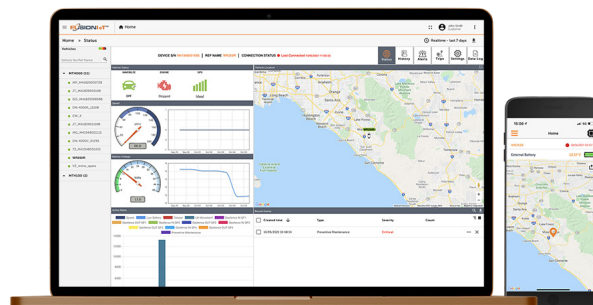
GATEWAY FUNCTIONALITY

BAT-X can act as a gateway solution for BTM250 series and other Bluetooth devices, capturing actionable location and condition data from multiple sources including its own internal sensors and antenna.

SMART

BAT-X is the optimum device for dynamic asset tracking over extended periods. Leveraging smart-logic and increased battery density, BAT-X provides enhanced tracking and data collection capacity between charges.

Pair BAT-X with Mobilogix FusionIoT™ Cloud Platform Plus Connectivity for a mobile and modular end-to-end solution to smart asset management.



PRODUCT DETAILS

BAT-X

Indoor/Outdoor Location and Environmental Condition Tracker



FEATURES AND BENEFITS

- Real-time and periodic reporting of sensor data
- Global deployment with a single SKU
- Bluetooth Beacons Gateway

SERVICES

- FOTA (firmware over the air) updates
- Fusion LaaS (indoor and outdoor location services)
- Indoor Location via BLE5 beacons

Technical Specifications

Antenna	Internal														
Cellular Service	LTE (CatM1), Global 2G GPRS Quad Band														
Location Services	GPS, Glonass WiFi Location Services only														
Bluetooth	Bluetooth 5.1														
Sensors	<table border="0"> <tr> <td>Accelerometer</td> <td>6-axis & Gyro, Start: 10 ms (warm), 55 ms (cold), Sensitivity: ~16.4 LSB/°/s (@ 2000°/s range)</td> </tr> <tr> <td>Temperature</td> <td>Range: -40°C to 85°C</td> </tr> <tr> <td>Pressure</td> <td>Range: 300 hPa - 1100 hPa, Offset temp. coef.: ±1.5 Pa/K</td> </tr> <tr> <td>Humidity</td> <td>Range: 0 to 100 %RH, Accuracy: ± 3%</td> </tr> <tr> <td>Ambient Light</td> <td>Range: 0 to 64000 lux</td> </tr> <tr> <td>Drop & Impact</td> <td>Range: 1 to 25.5 G</td> </tr> <tr> <td>Tilt</td> <td>Range: 0 to 180 (non-negative)</td> </tr> </table>	Accelerometer	6-axis & Gyro, Start: 10 ms (warm), 55 ms (cold), Sensitivity: ~16.4 LSB/°/s (@ 2000°/s range)	Temperature	Range: -40°C to 85°C	Pressure	Range: 300 hPa - 1100 hPa, Offset temp. coef.: ±1.5 Pa/K	Humidity	Range: 0 to 100 %RH, Accuracy: ± 3%	Ambient Light	Range: 0 to 64000 lux	Drop & Impact	Range: 1 to 25.5 G	Tilt	Range: 0 to 180 (non-negative)
Accelerometer	6-axis & Gyro, Start: 10 ms (warm), 55 ms (cold), Sensitivity: ~16.4 LSB/°/s (@ 2000°/s range)														
Temperature	Range: -40°C to 85°C														
Pressure	Range: 300 hPa - 1100 hPa, Offset temp. coef.: ±1.5 Pa/K														
Humidity	Range: 0 to 100 %RH, Accuracy: ± 3%														
Ambient Light	Range: 0 to 64000 lux														
Drop & Impact	Range: 1 to 25.5 G														
Tilt	Range: 0 to 180 (non-negative)														
Battery	4000 mAh Li-ion (rechargeable); Up to 1-year battery life on a single charge (1 ping per day)														
Operating Voltage	>3.8 V														
Enclosure	Increased rigidity and environmental resistance with sensor vents														
Dimension	122 x 60 x 23 mm														
Indicators and Sensors	Power, Network, and GPS LED status; Ambient light window; Humidity vents (optional membrane)														
Operating Temperature	-20°C to 60°C														
Certifications	FCC, ISED, Verizon, PTCRB, RoHS2 (EU directive), T-Mobile, U.S. Cellular														
Warranty	1 Year Device and Parts														