



# THE LEADING SOLUTION FOR REAL-TIME VAPING DETECTION

Introducing FlySense®, the real-time vaping, elevated sound incident detection solution that gives you control of areas where you cannot place a camera or microphone.

**Soter Technologies**  
101 Comac Street  
Ronkonkoma, NY 11779  
1-877-END-VAPE  
info@sotertechnologies.com  
www.sotertechnologies.com

FlySense® is a registered trademark of Soter Technologies, LLC. FlySense® vape detector is protected by granted and pending patents and design registrations: [www.sotertechnologies.com/patents](http://www.sotertechnologies.com/patents)

© 2021 Soter Technologies, LLC. All rights reserved.

## Take control

The key to improving life safety and security in schools is through automated situational awareness. FlySense® is a cutting-edge, turnkey solution for detecting vaping and bullying — particularly in school bathrooms and locker rooms. The solution is comprised of an array of multi-sensor devices connected to a cloud-based platform.



**Detect**  
Vape, Smoke, Elevated Sound Incidents, and Device Tampering.



**Instant Alert Notifications**  
Alert the designated school official when vaping, elevated sound or device tampering is detected via email or text.



**FlySense® Dashboard**  
Control your sensors through a computer or on a smartphone with our mobile version.

## How it works

When a sensor detects chemicals from vaping or sound anomalies that suggest bullying / violence, it sends an immediate, location-specific notification to the computers or mobile devices of one or more designated school officials.

### Device Tampering

An audible signal will sound when someone or something else is within the proximity sensor range. Both the proximity range and buzzer volume can be adjusted in the FlySense® Portal.

## Detect. Educate. Deter.

FlySense® provides environmental intelligence that allows a possible dangerous or harmful situation to be addressed in a timely and effective manner — thus averting potential disaster.

Through the FlySense® Dashboard, accessible through a computer or phone with our mobile version, it is possible to obtain analytical reports to determine which locations and time of day experience the most activity to help schools align operations and react accordingly.

## Benefits

Easy installation and set-up. Mount FlySense® on to the ceiling with two screws.

Successfully identify, analyze, manage incidents on school grounds with customizable, real-time SMS and email alert notifications.

Increased situational awareness and deterrence of harmful and dangerous behavior.

Risk mitigation, reduction in the staffing burden for designated coverage areas, and increased efficiency through coordination of resources.

Support state laws and compliances.

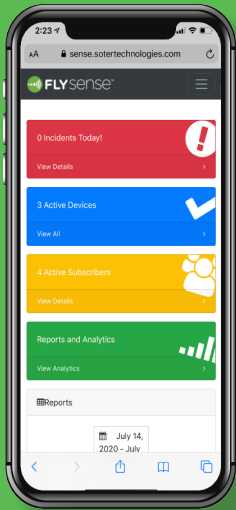
Zero invasion of student privacy.



**COMPONENTS**  
FlySense® Device



Administrator Mobile Access



**Soter Technologies**

101 Comac Street  
Ronkonkoma, NY 11779  
1-877-END-VAPE  
info@sotertechnologies.com  
www.sotertechnologies.com

FlySense® is a registered trademark of Soter Technologies, LLC. FlySense® vape detector is protected by granted and pending patents and design registrations: www.sotertechnologies.com/patents

**Features**



**Incident Detection**

Smart sensor array detects vaping signatures®, sound anomalies associated with bullying / fighting, or device tampering in real time, 24/7.



**Alert Notifications**

Zero-delay, location-specific alert notifications on vape and sound incidents sent by SMS or email to designated school officials.



**Solution Management**

Easy to use administrator web portal for schools teams to manage devices, customize subscriber schedules and view alerts.



**Performance Optimization**

30-day, categorized alert history allows devices to learn environments, reduce false positives, and optimize performance.



**Insights & Analytics**

Real-time sensor data and analytical reports help to determine which locations and time of day experience the most activity.



**Power Options**

Options to power devices via Power-over-Ethernet (PoE) or external input power with Wi-Fi capability.

**Specifications**

Physical Characteristics	
Dimensions	4.75" W x 6.56" L x 2.20" H
Weight	9.0 oz.
Housing Material	ABS Plastic

Connectivity	
Ethernet data connectivity via built-in RJ-45 connector and 802.3af interface	
802.11b/g/n/ac Wi-Fi supporting 2.4/5 GHz frequency band	

Warranty	
1-year limited hardware warranty covers defects in workmanship and materials	

Environment	
Operating Temp.	55° to 95°F (12.8° to 35°C)
Coverage Area	10' x 10' x 9'

Sensors	
Vape	Temperature
Sound	Humidity
Proximity	

Event Indicators	
RGB LED Alert Indicator	

Input Power	
Built-in 802.3af compliant PoE (over Cat 5e or 6 cable)	
External power via 24V 0.5A AC/DC transformer with 5.5mm x 2.1mm DC connector	