



IMMERSING
GLOBAL
AUDIENCES
EXHIBITIONS
AND SPEAKERS

2024

[NATGEO.ORG/EVENTS](https://www.natgeo.org/events)

LETTER FROM EMILY

Greetings,

The National Geographic Society has funded innovators for more than 136 years – bold scientists, Explorers, educators and storytellers who are committed to furthering our understanding of the planet. By investing in a diverse, global community of changemakers, National Geographic continues to push the boundaries of knowledge, uncover new insights about the natural and cultural worlds, and strengthen our connection to them and one another. We bring these stories of adventure, world cultures and wild places to life in exhibitions, live events and experiences that are designed to be shared with audiences of all ages.

This year, we are thrilled to present a diverse and complementary array of live speaking events and traveling exhibitions. National Geographic Live represents world-leading Explorers, photographers, scientists, authors and filmmakers – individuals who draw on their experiences to inspire, challenge and motivate audiences. Hear these behind-the-scenes stories from featured photographers like **Ronan Donovan** or world-class experts like **Doug Smith** live on stage paired with one of our exhibitions, like **Wolves**, for an unforgettable experience.

We tour a diverse catalog of branded exhibitions to highly visible global venues such as museums, foundations and cultural institutions. We are particularly excited about two new immersive and interactive experiences: **Root for Nature** and **Photo Ark: Animals of Earth** by **Joel Sartore**. These two shows fit alongside our existing award-winning large scale interactive exhibition, our touring immersive experience and various photography shows.

Join us and immerse yourself in the unforgettable imagery and captivating storytelling of National Geographic.



EMILY DUNHAM
CHIEF CAMPUS AND EXPERIENCES OFFICER

TABLE OF CONTENTS

4 Animals of Earth
Joel Sartore

6 Beyond King Tut

8 Root for Nature

10 Becoming Jane

12 Wolves
Ronan Donovan

14 Pristine Seas

16 The Greatest Wildlife Photographs

18 50 Greatest Landscapes

20 Inside the Curve

22 Spectacle

24 National Geographic Live

26 By the Numbers

29 About National Geographic Society

30 Diversity, Equity and Inclusion

WOLVES 12

INSIDE THE CURVE 20

PRISTINE SEAS 14

PHOTOS (TOP TO BOTTOM): RONAN DONOVAN, SIRACHAI (SHIN) ARUNRUGSTICHAI, ENRIG SALA

COMING SOON!



PHOTOS (LEFT TO RIGHT): ELLEN SARTORE, MOMENT FACTORY, JOEL SARTORE NATIONAL GEOGRAPHIC PHOTO ARK

NATIONAL GEOGRAPHIC PHOTOARK
Animals
of EARTH
BY JOEL SARTORE



- IMMERSIVE PROJECTIONS
- MULTIPLE ROOMS
- INTERACTIVES
- MERCHANDISE

PHOTO ARK: ANIMALS OF EARTH

BY JOEL SARTORE

ADD A KEYNOTE SPEAKER

Discover a world where every creature is celebrated in its unique splendor. National Geographic presents “Photo Ark: Animals of Earth by Joel Sartore,” a captivating exhibit showcasing the extraordinary work of renowned Photo Ark founder and National Geographic Explorer Joel Sartore. The exhibit will bring you face-to-face with stunning images of animals from around the globe. Connect with charismatic and wonderful species in this interactive experience like never before.

With a medley of colors and light, every area of this exhibit is a powerful testament to the diversity of species featured. Whether you’re a wildlife enthusiast, a lover of photography or videography, or just seeking a meaningful family adventure, Animals of Earth is your ticket to a journey filled with amazement, inspiration and delight.

FEATURED SPEAKER

JOEL SARTORE | FEATURED PHOTOGRAPHER

Joel Sartore is a National Geographic Explorer and photographer, speaker, author, teacher, conservationist, and regular contributor to National Geographic magazine. He is the founder of the National Geographic Photo Ark, a multiyear project documenting all species living in the world’s zoos, aquariums and wildlife sanctuaries in an effort to raise awareness, educate, and inspire action to help protect wildlife by supporting on-the-ground conservation efforts. In addition to the work he has done for National Geographic, Joel has contributed to Audubon magazine, Time, Life, Newsweek and Sports Illustrated, and Joel and his work have been featured in hundreds of books and magazines. Joel and his work are also the subjects of several national television programs, including National Geographic’s “Explorer,” “NBC Nightly News,” NPR’s “Weekend Edition,” PBS’ hour-long documentary “At Close Range,” and CBS’ “Sunday Morning” and “60 Minutes.”

SUGGESTED TOPICS:

BUILDING THE PHOTO ARK

Go behind the scenes with Joel as he travels the globe to photograph animals from big to small, cute and cuddly to feathered and scaly – no matter their status, size or aesthetic appeal, he brings the beauty of each species to life. Things can go wrong – and they often do – but getting up close and personal is what it’s all about.



PHOTOS: REBECCA HALE



- IMMERSIVE PROJECTIONS
- MULTIPLE ROOMS
- VIRTUAL REALITY
- EDUCATOR GUIDE
- MERCHANDISE

BEYOND KING TUT

THE IMMERSIVE EXPERIENCE

ADD A KEYNOTE SPEAKER

“Beyond King Tut: The Immersive Experience” celebrates the 100-year anniversary of the legendary discovery of Tutankhamun’s tomb in Egypt’s Valley of the Kings. Visitors will experience cinematic storytelling and soaring projection imagery as they venture into the boy king’s world like never before. Meet the gods of the underworld, study the ancient practice of mummification, and learn more about the Explorers who continue to unmask the mysteries of the golden king’s life.

FEATURED SPEAKER

DR. KARA COONEY | EGYPTOLOGIST

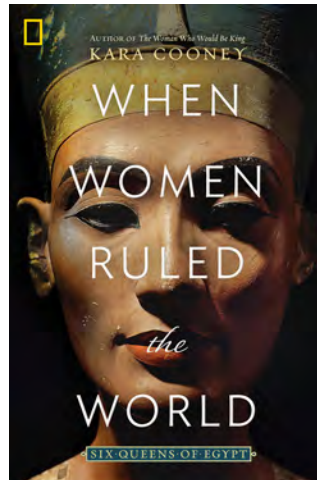
Dr. Kathlyn (Kara) Cooney is a professor of Egyptian Art and Architecture at UCLA. Specializing in craft production, coffin studies and economies in the ancient world, Cooney received her Ph.D. in Egyptology from Johns Hopkins University. In 2005, she was co-curator of the “Tutankhamun and the Golden Age of the Pharaohs” exhibit at the Los Angeles County Museum of Art. Cooney produced “Out of Egypt,” a comparative archaeology television series, which aired in 2009 on the Discovery Channel and is now available online via Netflix and Amazon.



SUGGESTED TOPIC:

WHEN WOMEN RULED THE WORLD

Often neglected in the history books, these women were considered exceptions to the rule: political pawns in a patriarchal society. But their power and influence is undeniable. Cleopatra used her sexuality – and her money – to build alliances with warlords of the Roman Empire. Neferusobek was the first woman to definitively take the title of King. Nefertiti is known more for her beauty than for bringing a fractured Egypt together. What can we learn from how these women ruled? Dr. Cooney shares some illuminating answers.



NOTE: “Beyond King Tut” is not an artifact exhibition, allowing the treasures from Tut’s tomb to remain in their country of origin.

NEW!



PHOTOS: JEAN PHILIP LESSARD

ROOT FOR NATURE

ADD A KEYNOTE SPEAKER

Root for Nature is a powerful, immersive experience inspired by the historic COP15 agreements, where 188 countries agreed to protect 30% of the planet’s land and water by 2030. Far from a mere formality, this “Montreal moment” was a promise of change, with nations pledging to halt and reverse biodiversity loss. Root for Nature is an ode to optimism, a celebration of art and biodiversity as a mirror of our intrinsic connection to nature, and a reminder that every action counts when it comes to building a sustainable future. Where words fail, art speaks, breaking down the barriers between humanity and nature and igniting a spark for awareness and action. Because we all have a part to play. Because we are biodiversity.

This exhibit is produced and traveled by OASIS Immersive Studios in collaboration with National Geographic.

NOTE: The Root for Nature exhibit features 70 minutes of original immersive content with gesture-based interactivity. It can also include educational workshops, informational panels, themed scenography and art installations.



IMMERSIVE PROJECTIONS

MULTIPLE ROOMS

WORKSHOP

MERCHANDISE

FEATURED SPEAKER

ALIZÉ CARRÈRE | ANTHROPOLOGIST & FILMMAKER

Learn the remarkable ways people around the world are adapting to climate change with environmental anthropologist and filmmaker Alizé Carrère. She will offer a hopeful look at the resilience, perseverance and innovation of humans under the most difficult conditions. We will go to the South Pacific waters of Vanuatu, where islanders are using techniques to combat outbreaks of crown-of-thorns starfish that threaten the surrounding reefs, and discover how farmers in Bangladesh living in low-lying areas are reviving the agricultural technique of floating gardens to rebuild community infrastructures from schools to hospitals to playgrounds.





EXHIBIT PHOTOS: ELON SCHOENHOLZ/NATURAL HISTORY MUSEUM OF LOS ANGELES COUNTY; JANE GOODALL PHOTO COURTESY: JANE GOODALL INSTITUTE



**INTERACTIVE
MULTIMEDIA**

AUGMENTED REALITY

7,000 SQUARE FEET

BECOMING JANE

THE EVOLUTION OF
DR. JANE GOODALL

THREE-TIME AWARD WINNER

"Becoming Jane" was honored as an overall award winner by the American Alliance of Museums in 2020. The exhibition also received the Thea Award for Outstanding Achievement. The award, which is internationally recognized, celebrates achievement, talent and personal excellence within the themed entertainment industry. Most recently, the exhibit won the first-ever Traveling Exhibition Award for Best "WOW" Moment at the TREX Traveling Exhibitions Forum.



Dr. Jane Goodall braved the unknown to give the world a remarkable window into humankind's closest relatives: chimpanzees. In this hands-on, transportive multimedia exhibition celebrating her extraordinary life and work, you'll explore Jane's early years through iconic images and a multiscreen experience; venture on an immersive exploration of Tanzania's Gombe National Park, where she did her famous behavioral research on chimps; and learn about her current role as a leader in community-centered conservation and youth empowerment.



An exhibition organized
in partnership with





49 IMAGES WITH LABELS
TEXT PANELS
TITLE PANEL
VIDEOS
BILINGUAL ENGLISH AND SPANISH

WOLVES

PHOTOGRAPHY BY
RONAN DONOVAN

ADD A KEYNOTE SPEAKER



Produced in collaboration with the National Museum of Wildlife Art, this traveling exhibition features stunning images and videos by National Geographic Explorer and photographer Ronan Donovan. A field biologist-turned-conservation photographer and filmmaker, Donovan uses storytelling to explore the relationship between humans and wildlife and dispel the misconceptions that drive human-wildlife conflict. The exhibition contains photos and videos from Donovan's National Geographic Society-funded work in the Greater Yellowstone Ecosystem and at Ellesmere Island in the Canadian Arctic.

FEATURED SPEAKER

RONAN DONOVAN | FEATURED PHOTOGRAPHER

Photographer Ronan Donovan's passion for conserving wild animals and wild places was ignited during his years as a field biologist, inspiring him to use visual storytelling as a way to reach a greater audience. His National Geographic expeditions have spanned continents, from documenting life in Yellowstone to detailing African chimpanzee conflicts. His renowned photographs have hung on the walls of the Natural History Museum in London and the Smithsonian National Museum of Natural History in Washington, D.C.



PHOTOGRAPHER
RONAN DONOVAN



An exhibition from **NATIONAL GEOGRAPHIC**

PRISTINE SEAS

BRINGING THE OCEAN BACK

PHOTO (LEFT): ENRIG SALA
EXHIBIT PHOTOS (TOP TO BOTTOM): ANAS ALLAWAMA, JUDITH AARTSEN



PRISTINE SEAS

BRINGING THE OCEAN BACK

ADD A KEYNOTE SPEAKER

Conservationist and National Geographic Explorer in Residence Enric Sala founded and leads National Geographic Pristine Seas, a project that combines exploration, scientific research, media and strategic communications to inspire country leaders to protect the ocean. Since 2008, Pristine Seas has helped create some of the largest marine protected areas (MPAs) in the world – covering a total area of over 6.6 million square kilometers, which is twice the size of India.

Through 2030, Pristine Seas will work with local and Indigenous communities, governments, and other partners to inspire the creation of new MPAs and catalyze the global community to protect at least 30% of the ocean by 2030. This will preserve vital ocean areas, protect carbon stocks and support local food supply – a triple win.

The Pristine Seas traveling exhibition reveals the benefits of MPAs in protecting biodiversity, preserving carbon stocks, and ensuring economic and food security for the local communities who depend on the ocean for their survival.



- 65 IMAGES WITH LABELS
- TEXT PANELS
- TITLE PANEL
- VIDEOS
- BILINGUAL ENGLISH AND SPANISH
- ARABIC, SWEDISH, DANISH TRANSLATIONS AVAILABLE

FEATURED SPEAKER

DR. ERIKA WOOLSEY | MARINE BIOLOGIST

Once a year, Australia’s most famous reef turns into a snow globe as millions of coral polyps reproduce to send the next generation afloat. This incredible display disguises a harsh truth: the Great Barrier Reef is under attack. More than half of the reef’s coral has died in our lifetime, but there is hope. Join National Geographic Explorer Dr. Erika Woolsey for a dive into the underwater jungles of the Great Barrier Reef, discover the thousands of species who call the reef home, and learn how scientists and citizens are fighting to protect reefs around the world.



MARINE BIOLOGIST
DR. ERIKA WOOLSEY



PHOTOS (TOP): PAUL NICKLEN, (BOTTOM): TIM LAMAN, (RIGHT): TAYLOR WICKAL

- 70+ FRAMED PRINTS WITH LABELS
- TEXT PANELS
- TITLE PANEL
- VIDEOS
- FRENCH TRANSLATIONS



An exhibition from NATIONAL GEOGRAPHIC

The Greatest WILDLIFE PHOTOGRAPHS

THE GREATEST WILDLIFE PHOTOGRAPHS

ADD A KEYNOTE SPEAKER

FEATURED PHOTOGRAPHER JASPER DOEST



For over a century, National Geographic has pioneered and championed the art of wildlife photography and captivated generations of engaged audiences with a steady stream of extraordinary images of animals in nature. From 1906, when we published groundbreaking photos of wildlife at night, to the present, National Geographic’s publications have broken new ground and pushed the bar higher again and again, establishing an unmatched legacy of artistic, scientific and technical achievement.

FEATURED SPEAKERS

JASPER DOEST | FEATURED PHOTOGRAPHER

Jasper Doest is a Dutch photographer and National Geographic Explorer who works at the intersection between humans and nature. Whether in tropical or arctic climates, documenting birds, primates, or our own human impact, Doest’s emotional images are an urgent reminder of the beauty and fragility of our planet. He is a Senior Fellow of the International League of Conservation Photographers and a Dutch World Wildlife Fund ambassador. His work has been published in international journals such as National Geographic magazine, Smithsonian magazine and GEO, and he has received numerous awards, including World Press Photo and Wildlife Photographer of the Year.

RONAN DONOVAN | FEATURED PHOTOGRAPHER

Photographer Ronan Donovan’s passion for conserving wild animals and wild places was ignited during his years as a field biologist, inspiring him to use visual storytelling as a way to reach a greater audience. His National Geographic expeditions have spanned continents, from documenting life in Yellowstone to African chimpanzee conflicts. His renowned photographs have hung on the walls of the Natural History Museum in London and the Smithsonian National Museum of Natural History in Washington, D.C.



PHOTOS (LEFT TO RIGHT): BABAK TAFRESHI, DIANE COOK AND LEN JENSHIEL

- 50 IMAGES WITH LABELS
- TEXT PANELS
- TITLE PANEL
- HARDCOVER BOOK

An exhibition from  NATIONAL GEOGRAPHIC

50 Greatest LANDSCAPES

50 GREATEST LANDSCAPES

ADD A KEYNOTE SPEAKER



This breathtaking tour of the world's most extraordinary landscapes reveals the splendors of nature in every form. Best-in-class photographers have captured views you've never imagined – by climbing mountains, flying in helicopters and diving deep underwater – to bring bold new perspectives to the great outdoors. Vibrant and inspiring, this exhibition is an invigorating journey to see the wonders of the world – from coasts, valleys and hilltops to everything in between.

FEATURED SPEAKER

BABAK TAFRESHI | FEATURED PHOTOJOURNALIST

Babak Tafreshi is a science photojournalist and cinematographer who merges art and science through visual stories. Tafreshi created The World at Night program in 2007 with the message of One People One Sky, and has been directing its team of photographers in approximately 30 countries. He received the 2009 Lennart Nilsson Award, the world's most recognized scientific imaging award at the time, for his effort to reconnect humanity with the natural world using night sky images. A National Geographic contributor since 2012, he has presented his work in more than 100 television shows and documentaries, and he is a 2022 National Geographic Wayfinder Award recipient.



| FEATURED PHOTOJOURNALIST |
BABAK TAFRESHI



PHOTOS (LEFT TO RIGHT): SIRACHAI (SHIN) ARUNRUGSTICHAI, DIANA BAGNOLI

NATIONAL GEOGRAPHIC
(INSIDE THE CURVE)
 STORIES FROM THE PANDEMIC

INSIDE THE CURVE

STORIES FROM THE PANDEMIC

ADD A KEYNOTE SPEAKER



(INSIDE THE CURVE)

STORIES FROM THE PANDEMIC

BY CLAUDI CARRERAS



| CURATOR |
 CLAUDI CARRERAS



- 125 IMAGES WITH LABELS
- TITLE ART
- VIDEOS
- HARDCOVER BOOK

At the outset of the unprecedented COVID-19 pandemic, National Geographic quickly responded by creating an emergency fund to support journalists and storytellers worldwide. The penetrating work of these grantees richly illustrates myriad aspects of a world in crisis, elevating deeply personal local stories and giving them a global reach. See the pandemic through the eyes of these National Geographic storytellers.

The exhibition is curated by Claudi Carreras Guillén, an independent curator, editor and photography researcher.

FEATURED SPEAKER

MUHAMMED MUHEISEN | PHOTOGRAPHER

Images have power. Join National Geographic Explorer Muhammed Muheisen, a two-time Pulitzer Prize-winning photographer, on a journey to explore the enduring human spirit through his powerful portraits that tell stories of resilience from around the world. Muheisen pursues his photography with the belief that a single image can change the world. His work takes an unflinching but hopeful look at lives impacted by war. From children's games to balloon salespeople, his images capture the kindness and humanity that exists in even the worst situations.



| PHOTOGRAPHER |
 MUHAMMED MUHEISEN



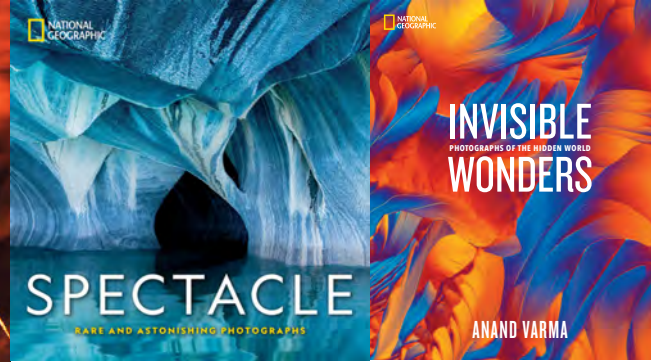
PHOTO: DIANE COOK AND LEN JENSEN

SPECTACLE

RARE AND ASTONISHING PHOTOGRAPHS

ADD A KEYNOTE SPEAKER

“Spectacle” is an exquisite photo exhibition that showcases an array of sights that are as remarkable as they are unforgettable. The photographs highlight moments of celebration and moments of utter chaos. They reveal awe-inspiring life-forms and capture our miraculous planet in all its glory – emphasizing the need to protect all of its wonder. Each image enlightens and inspires, allowing visitors to marvel at the diverse, complex and truly remarkable planet on which we all live.



60 IMAGES WITH LABELS

TEXT PANELS

SPEAKER OPPORTUNITIES

HARDCOVER BOOKS

FEATURED PHOTOGRAPHERS

ROBBIE SHONE | PHOTOGRAPHER

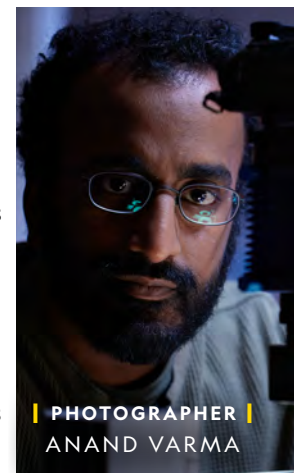
A cave explorer and visual storyteller, Robbie Shone is recognized as one of the most accomplished cave photographers in the world. While studying Fine Art at university, he developed a strong interest in caving, and in particular the challenges that cave photography has to offer. Over the next twenty-five years, Robbie has lit up and captured stunning images of the naturally pitch-black world beneath our feet. Robbie’s exciting expedition photography has taken him to the remotest parts of the world where he’s photographed the ‘deepest’, ‘largest’, ‘longest’ cave systems known. His work has been featured in publications all around the world including National Geographic magazine. Shone has also worked for the European Space Agency, documenting astronauts undergoing geological and microbiological field training and as an expert on National Geographic Student Expeditions



PHOTOGRAPHER
ROBBIE SHONE

ANAND VARMA | PHOTOGRAPHER

Anand Varma is a National Geographic Explorer and award-winning photographer based in Berkeley, California. He has devoted years of his life to developing innovative techniques – even building some of his own equipment – to create intimate, dramatic and surprising images of nature. He holds a degree in integrative biology from University of California, Berkeley, and uses photography to share the story behind the science on topics from honeybee health to hummingbird biomechanics. Varma has photographed numerous stories for National Geographic magazine, including the 2014 cover story, “Mindsuckers.” Varma’s ultimate goal is to spark a sense of wonder about our world. He sees the camera not just as a tool to capture what is visible, but as a way to illuminate the layers of beauty and complexity that are otherwise hidden from the naked eye.



PHOTOGRAPHER
ANAND VARMA



PHOTO: ELMAN STUDIO

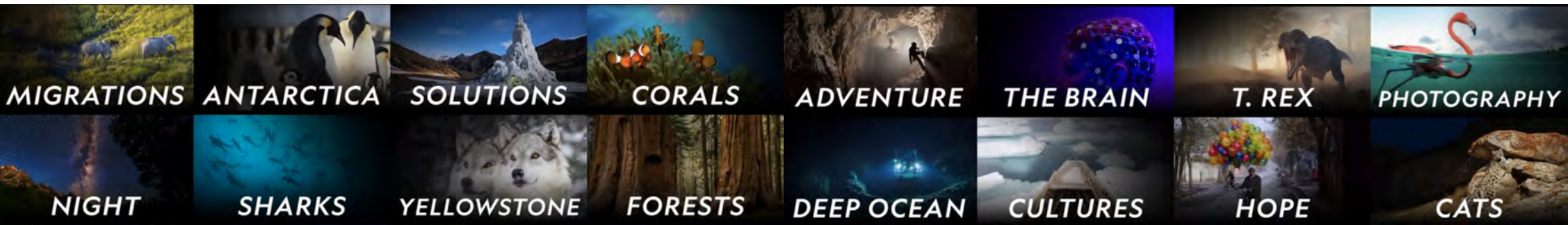
NATIONAL GEOGRAPHIC LIVE

National Geographic Live is a public performance full of immersive storytelling and unforgettable imagery. Hear behind-the-scenes stories from National Geographic’s Explorers, photographers, scientists, filmmakers and adventurers – live on stage.

National Geographic Live is committed to creating community wherever our shows are on stage. We offer a myriad of ancillary activities to add to your performance to reach new audiences.

Options include:

- Student matinees
- Storytelling workshops
- Sip and learn nights
- Outreach opportunities with at-risk populations
- Planetarium shows
- Book talks
- University lectures
- Partnerships with local science centers
- and much more...



TRAVELING EXHIBITIONS

BY THE NUMBERS

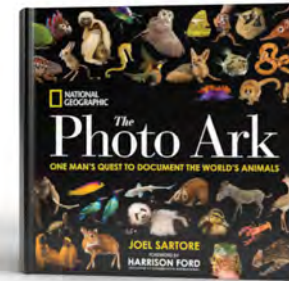
Since 2012, National Geographic traveling exhibitions have been seen by more than



78 MILLION VISITORS



Considered one of the
**TOP SOURCES
FOR ACCLAIMED
PHOTOGRAPHY
EXHIBITIONS IN THE WORLD**



43

Books for adults and kids that are available for exhibition merchandising



Exhibitions have been translated into

31

LANGUAGES

Exhibitions have traveled to

55 COUNTRIES

and

325 CITIES

Please contact us to discuss hosting any of these exhibitions!

EXHIBITIONS@NGS.ORG



PHOTO: REBECCA HALE

EXHIBITIONS: DIGITAL DELIVERY OUTSIDE U.S.

International partners have a unique opportunity to participate in our digital delivery model for exhibitions. Content packages are provided via a secure link, thereby eliminating costly shipping fees. This model is ideal for photography-, video-, and panel-based shows.

1. A fully curated DIGITAL PACKAGE will be sent to your team

Exhibition files:

- Images files
- Videos
- Text and label copy
- Complete press kit
- Logo/title treatment
- Exhibition guide

2. PRINT the files to specs that work for your venue and install.

National Geographic provides print and install guidelines for quality.

Translations may be available. Inquire with our team to discuss exhibitions@ngs.org



ABOUT NATIONAL GEOGRAPHIC SOCIETY

For more than 136 years, the National Geographic Society has funded the best and brightest individuals dedicated to scientific discovery and understanding of our world.

Our historic commitment to dauntless exploration dates back to our founding in 1888 when 33 prominent scholars and scientists established an organization dedicated to the “increase and diffusion of knowledge.”

Today, **National Geographic Explorers** are continuing to push the boundaries of knowledge, uncovering new insights about the natural and cultural worlds, and strengthening our connection to them and one another.

Our Mission: Using the power of science, exploration, education, and storytelling to illuminate and protect the wonder of our world.



PHOTOS (LEFT TO RIGHT): TERRY VIRTS, NASA, MARK THIESSEN



PHOTOS (LEFT TO RIGHT): KOSTADIN LUCHANSKY, ERIC DAFT

OUR COMMITMENT TO DIVERSITY, EQUITY AND INCLUSION

The National Geographic Society is actively working toward a more **inclusive future**. As an organization guided by science and innovation, the Society knows research demonstrates that creativity and innovation stem from effectively engaging people from a wide range of backgrounds and experiences.

The Society also recognizes that the organization cannot succeed with diversity alone. Equity and inclusion play critical roles in the organization's ability to achieve its mission to illuminate and protect the wonder of our world.



As outlined in the Society's strategic plan NG Next, the organization actively and intentionally works toward a more inclusive future by incorporating its diversity, equity and inclusion guiding principles of representation, collaboration, equity in impact, transparency, accessibility, and accountability into its programmatic and operational work.

Together with staff and its global community of Explorers and collaborators, the Society will continue to strive for a more inclusive future.



**NATIONAL
GEOGRAPHIC**

[NATGEO.ORG/EVENTS](https://www.natgeo.org/events)

Contact our teams at
EXHIBITIONS@NGS.ORG
NGLIVE@NGS.ORG