

CUSTOMER RETENTION

ORPHAN ASSOCIATE

Direct & Orphan Book Management



THE HIDDEN COST OF INEFFICIENCY

Direct-written business and unassigned “house accounts” often suffer from neglected service continuity. When these policyholders lack a dedicated agent proactively managing their accounts across your distribution network, they become highly susceptible to silent churn, directly eroding your baseline revenue.

YOUR DIGITAL WORKFORCE

The Orphan Associate: Indemn provides a digital workforce capable of delivering white-glove service at scale. Deploy the Orphan Associate to handle Direct & Orphan Book Management seamlessly, ensuring every policyholder receives continuous attention regardless of their broker assignment status.

AGENTIC BUSINESS RESULTS (ABR) DELIVERED

- **Continuous Service:** Drives automated renewal processing specifically tailored for “house accounts” or direct-written business.
- **Retention Secured:** Ensures customers receive proactive service continuity, preventing them from shopping their policy at renewal.
- **Operational Scale:** Manages high-volume, unassigned books of business without requiring additional operational headcount.



PROVEN ARCHITECTURE, ABSOLUTE CONTROL

COMPLIANCE BY DESIGN

The Human-in-the-loop Differentiator:

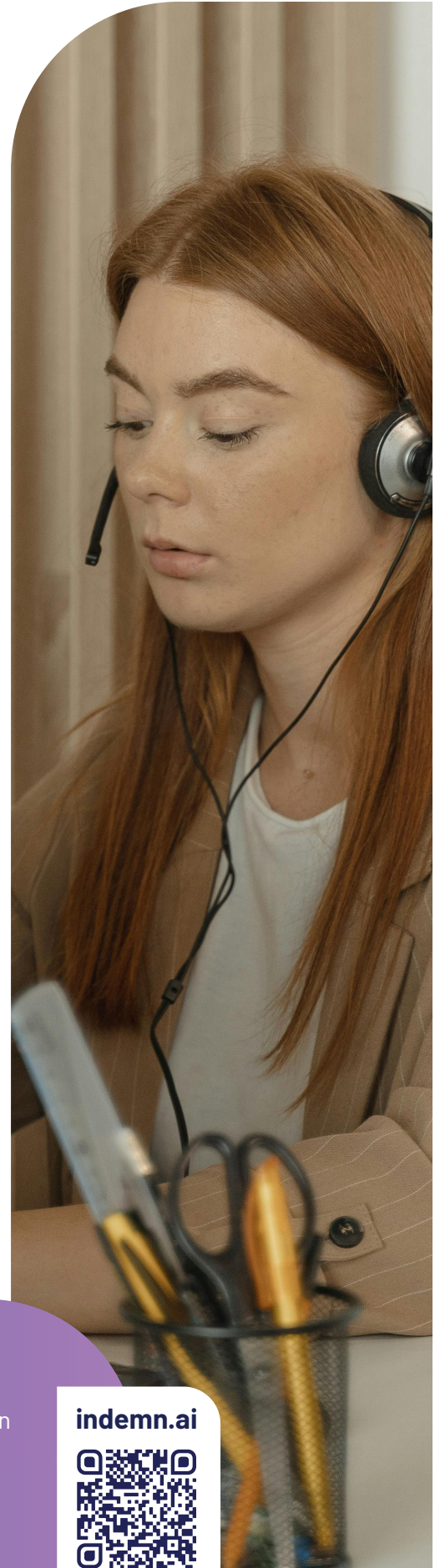
Our human-in-the-loop architecture actively enforces moment-by-moment integrity and NAIC AI Model Bulletin compliance. When ambiguous, the AI queues a response for human review, providing a transparent trail of decision-making.

INCONTROVERTIBLE MARKET VALIDATION

We approach the market with incontrovertible market validation: the successful creation, scaling, and sale of our fully digital MGA, Eventuguard. During its operation, our AI Associates successfully completed over 90% of policy sales transactions from quote to bind entirely without human intervention. This divestiture structurally de-risks our offering for institutional partners.

TECHNICAL VALIDATORS

- **Rapid Time-to-Value:** Production-ready in ~60 days.
- **Insurance-Native Architecture:** Understands binding authority and surplus lines out of the box.
- **API-First Integration:** Integrates with AMS/PAS (Guidewire, Vertafore) without breaking stacks.
- **No-Code Control:** Strategy Studio empowers operations teams to update rules without IT support.



Your Growth Partner in Insurance Distribution

indemn.ai

