

WORKFLOW EFFICIENCY

INBOX ASSOCIATE

Power Your Smart Inbox



THE HIDDEN COST OF INEFFICIENCY

Your highly skilled staff lose hours every day simply sorting, reading, and drafting routine correspondence. This high-volume administrative drudgery traps your producers and service teams, limiting the amount of time they can spend advising clients and generating revenue.

YOUR DIGITAL WORKFORCE

The Inbox Associate: Stop relying on finite savings and start scaling infinite capacity. We deliver Agentic Business Results (ABR) by deploying the Inbox Associate to act as your agency's Smart Inbox capability. It reads intent, synthesizes data, and queues up the work so your humans just have to review and send.

AGENTIC BUSINESS RESULTS (ABR) DELIVERED

- **Intelligent Drafting:** Automatically generates pre-drafted emails regarding claims status or underwriting questions based on the context of the inbound message.
- **Velocity Multiplier:** Allows your team to significantly increase their correspondence velocity, reducing email backlog from days to hours.
- **Elevated Focus:** Liberates human staff from administrative drudgery and high-volume noise so they can focus on judgment and relationships.



PROVEN ARCHITECTURE, ABSOLUTE CONTROL

COMPLIANCE BY DESIGN

The Human-in-the-loop Differentiator:

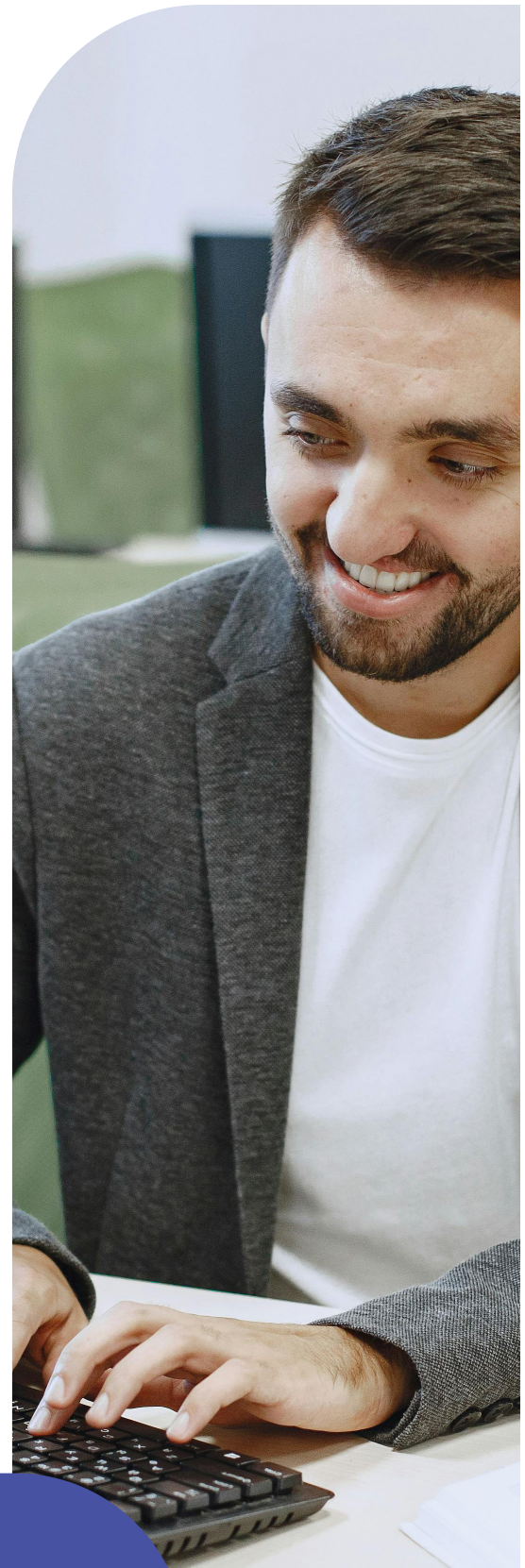
Our human-in-the-loop architecture actively enforces moment-by-moment integrity and NAIC AI Model Bulletin compliance. When ambiguous, the AI queues a response for human review, providing a transparent trail of decision-making.

INCONTROVERTIBLE MARKET VALIDATION

We approach the market with incontrovertible market validation: the successful creation, scaling, and sale of our fully digital MGA, Eventuguard. During its operation, our AI Associates successfully completed over 90% of policy sales transactions from quote to bind entirely without human intervention. This structurally de-risks our offering for institutional partners.

TECHNICAL VALIDATORS

- **Rapid Time-to-Value:** Production-ready in ~60 days.
- **Insurance-Native Architecture:** Understands binding authority and surplus lines out of the box.
- **API-First Integration:** Integrates with AMS/PAS (Guidewire, Vertafore) without breaking stacks.
- **No-Code Control:** Strategy Studio empowers operations teams to update rules without IT support.



Your Growth Partner in Insurance Distribution

indemn.ai

