

WORKFLOW EFFICIENCY

INTAKE ASSOCIATE FOR CLAIMS

# Accelerate the Claims Journey



## THE HIDDEN COST OF INEFFICIENCY

When a client experiences a loss, delayed intake processes compound their frustration. Furthermore, highly paid producers are trapped doing administrative drudgery while trying to manage these initial claims reports, which squeezes agency resources and limits growth.

## YOUR DIGITAL WORKFORCE

**The Intake Associate for Claims:** Indemn is the “digital workforce” for Insurance Distribution. By deploying specialized AI Associates that work alongside human teams, we empower agencies to scale capacity and extend reach. The Intake Associate for Claims handles the vital First Notice of Loss (FNOL) intake so your team can focus on the client relationship.

## AGENTIC BUSINESS RESULTS (ABR) DELIVERED

- **FNOL Excellence:** Delivers automated intake of First Notice of Loss, providing immediate service to the insured.
- **Immediate Capture:** Captures critical data instantly to accelerate the claims lifecycle and populate downstream systems.
- **Elevated Focus:** Liberates human staff from administrative drudgery and high-volume noise, protecting staff retention.



# PROVEN ARCHITECTURE, ABSOLUTE CONTROL

## COMPLIANCE BY DESIGN

### The Human-in-the-loop Differentiator:

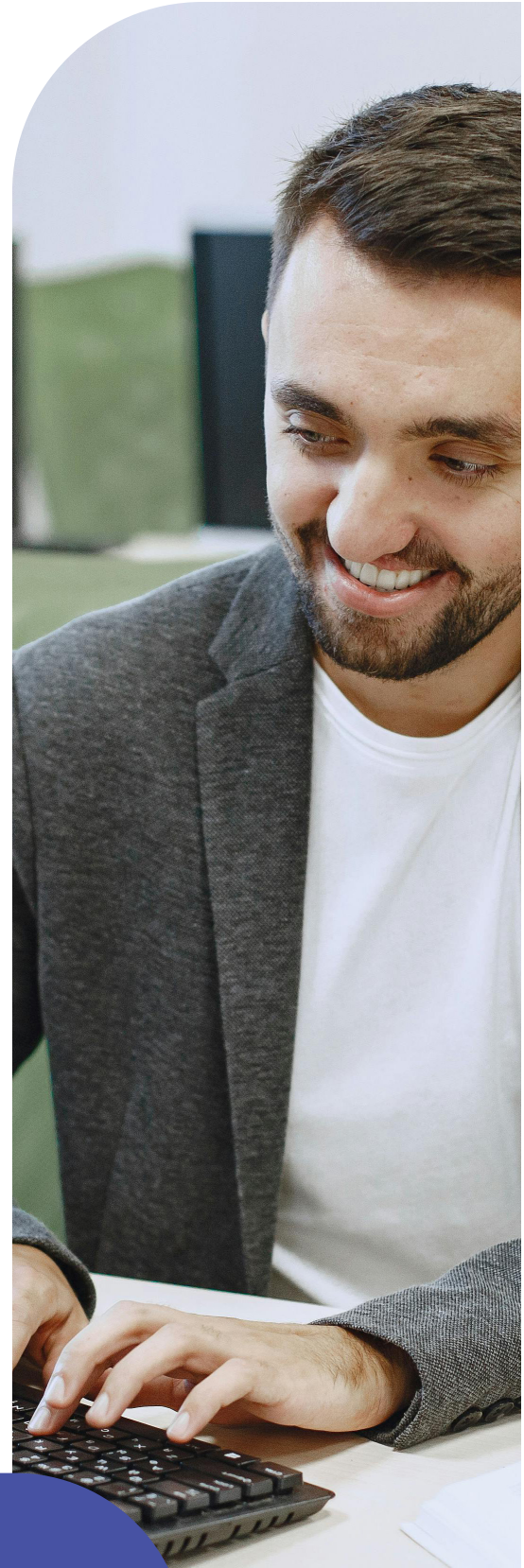
Our human-in-the-loop architecture actively enforces moment-by-moment integrity and NAIC AI Model Bulletin compliance. When ambiguous, the AI queues a response for human review, providing a transparent trail of decision-making.

## INCONTROVERTIBLE MARKET VALIDATION

We approach the market with incontrovertible market validation: the successful creation, scaling, and sale of our fully digital MGA, Eventuguard. During its operation, our AI Associates successfully completed over 90% of policy sales transactions from quote to bind entirely without human intervention. This structurally de-risks our offering for institutional partners.

## TECHNICAL VALIDATORS

- **Rapid Time-to-Value:** Production-ready in ~60 days.
- **Insurance-Native Architecture:** Understands binding authority and surplus lines out of the box.
- **API-First Integration:** Integrates with AMS/PAS (Guidewire, Vertafore) without breaking stacks.
- **No-Code Control:** Strategy Studio empowers operations teams to update rules without IT support.



Your Growth Partner in Insurance Distribution

[indemn.ai](https://indemn.ai)

