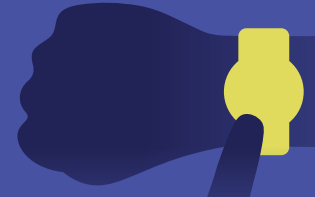


WORKFLOW EFFICIENCY

INTAKE ASSOCIATE

# Automate Line of Business Applications



## THE HIDDEN COST OF INEFFICIENCY

Navigating complex, multi-page Line of Business (LOB) applications is notoriously fraught with friction. Forcing your account managers to manually chase down data and re-key information into carrier portals wastes expensive labor and slows down your speed-to-market.

## YOUR DIGITAL WORKFORCE

**The Intake Associate:** Indemn is building the Resolution Layer for the industry, moving beyond defensive “efficiency tools” to become a Growth Partner. By deploying the Intake Associate for LOB applications, your agency can seamlessly translate unstructured data into actionable, ready-to-bind applications.

## AGENTIC BUSINESS RESULTS (ABR) DELIVERED

- **Application Management:** Drives automated Line of Business application processes, pulling data directly from client correspondence and historical records.
- **Frictionless Processing:** Significantly reduces the back-and-forth required to gather missing information from the insured.
- **Operational Scale:** Protects EBITDA and staff retention by removing one of the most tedious manual processes in the agency workflow.



# PROVEN ARCHITECTURE, ABSOLUTE CONTROL

## COMPLIANCE BY DESIGN

### The Human-in-the-loop Differentiator:

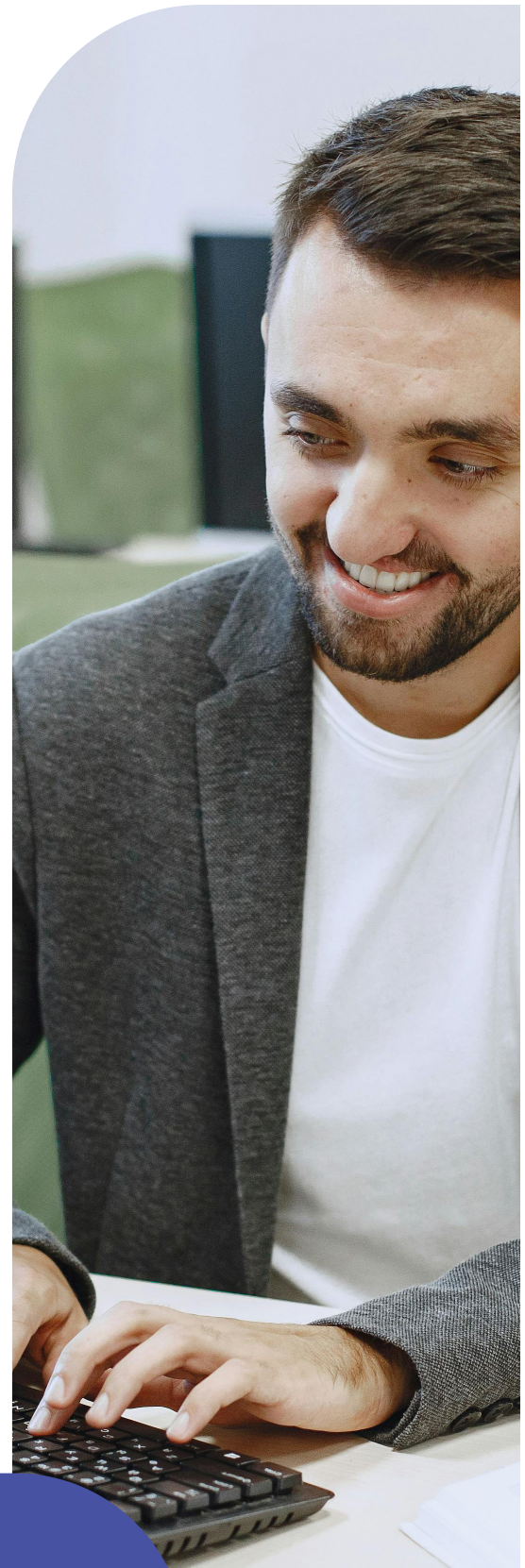
Our human-in-the-loop architecture actively enforces moment-by-moment integrity and NAIC AI Model Bulletin compliance. When ambiguous, the AI queues a response for human review, providing a transparent trail of decision-making.

## INCONTROVERTIBLE MARKET VALIDATION

We approach the market with incontrovertible market validation: the successful creation, scaling, and sale of our fully digital MGA, Eventuguard. During its operation, our AI Associates successfully completed over 90% of policy sales transactions from quote to bind entirely without human intervention. This structurally de-risks our offering for institutional partners.

## TECHNICAL VALIDATORS

- **Rapid Time-to-Value:** Production-ready in ~60 days.
- **Insurance-Native Architecture:** Understands binding authority and surplus lines out of the box.
- **API-First Integration:** Integrates with AMS/PAS (Guidewire, Vertafore) without breaking stacks.
- **No-Code Control:** Strategy Studio empowers operations teams to update rules without IT support.



Your Growth Partner in Insurance Distribution

[indemn.ai](https://indemn.ai)

