

WORKFLOW EFFICIENCY

KNOWLEDGE ASSOCIATE

# Eliminate the Research Bottleneck



## THE HIDDEN COST OF INEFFICIENCY

Your team is constantly interrupted to track down policy details, forms, and manuals. Highly paid producers are trapped doing administrative drudgery, and agencies are squeezed by labor shortages. When your human staff is bogged down by high-volume noise, the entire agency suffers.

## YOUR DIGITAL WORKFORCE

**The Knowledge Associate:** We are building the Resolution Layer for the industry, moving beyond defensive “efficiency tools” to become a Growth Partner. The Knowledge Associate acts as a Smart Process Library, providing a “super-search” capability for your internal team.

## AGENTIC BUSINESS RESULTS (ABR) DELIVERED

- **Instant Retrieval:** Knowledge Associate acts as a “super-search” for policy forms and manuals.
- **Time Recaptured:** Liberates human staff from administrative drudgery and high-volume noise.
- **Empowered Teams:** Ensures human experts focus on judgment, relationships, and innovation.



# PROVEN ARCHITECTURE, ABSOLUTE CONTROL

## COMPLIANCE BY DESIGN

### The Human-in-the-loop Differentiator:

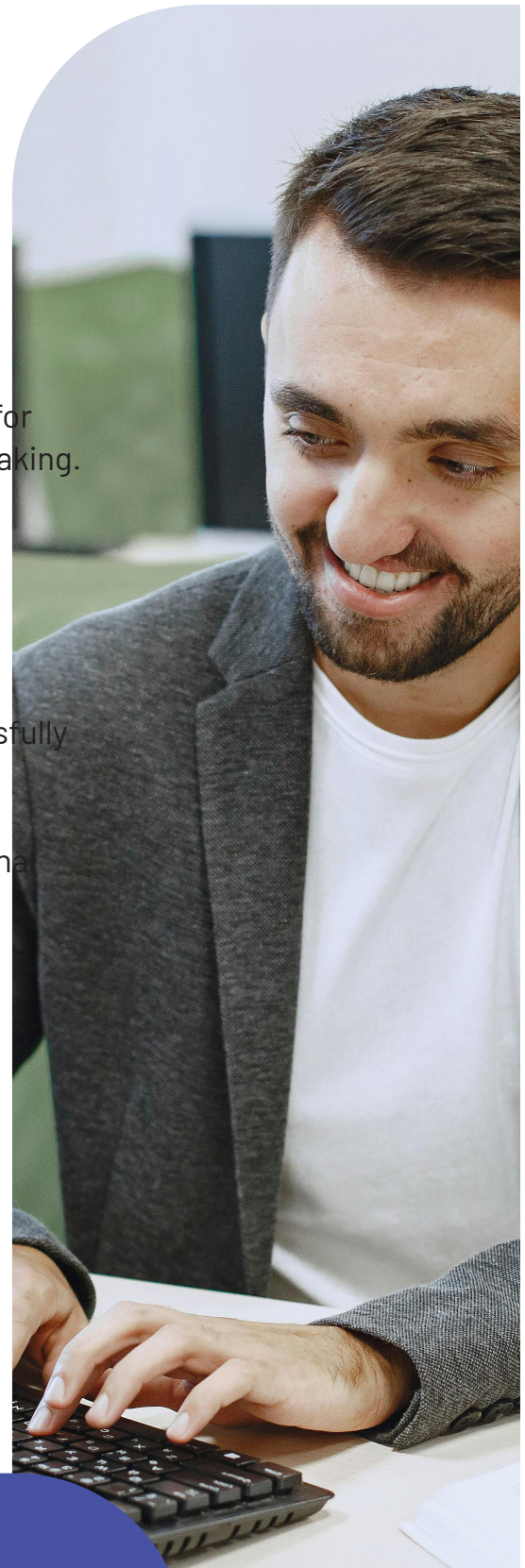
Our human-in-the-loop architecture actively enforces moment-by-moment integrity and NAIC AI Model Bulletin compliance. When ambiguous, the AI queues a response for human review, providing a transparent trail of decision-making.

## INCONTROVERTIBLE MARKET VALIDATION

We approach the market with incontrovertible market validation: the successful creation, scaling, and sale of our fully digital MGA, Eventuguard, to Jeweler's Mutual Insurance. During its operation, our AI Associates successfully completed over 90% of policy sales transactions from quote to bind entirely without human intervention. This divestiture structurally de-risks our offering for institutional partners, proving our AI Associates function reliably in highly regulated, live production environments.

## TECHNICAL VALIDATORS

- **Rapid Time-to-Value:** Production-ready in ~60 days.
- **Insurance-Native Architecture:** Understands binding authority and surplus lines out of the box.
- **API-First Integration:** Integrates with AMS/PAS (Guidewire, Vertafore) without breaking stacks.
- **No-Code Control:** Strategy Studio empowers operations teams to update rules without IT support.



Your Growth Partner in Insurance Distribution

[indemn.ai](https://indemn.ai)

