

WORKFLOW EFFICIENCY

ANSWER ASSOCIATE

The Ultimate Product Expert



THE HIDDEN COST OF INEFFICIENCY

When agents or policyholders cannot get immediate, accurate answers to dynamic product questions, confidence drops and business stalls. Forcing distribution partners to wait on hold for basic product clarifications actively limits your revenue capacity.

YOUR DIGITAL WORKFORCE

The Answer Associate: Serve as an instant Product Expert for your entire distribution network. We empower insurance organizations to pair human expertise with compliant, auditable AI Associates that provide immediate answers to complex questions.

AGENTIC BUSINESS RESULTS (ABR) DELIVERED

- **Centralized Knowledge:** Acts as the central provision of “source of truth” data for your specific carrier products and guidelines.
- **Dynamic Resolution:** Provides instant, accurate responses to dynamic information requests from agents or direct consumers.
- **Frictionless Distribution:** Removes the knowledge bottlenecks that slow down the quoting and binding process.



PROVEN ARCHITECTURE, ABSOLUTE CONTROL

COMPLIANCE BY DESIGN

The Human-in-the-loop Differentiator:

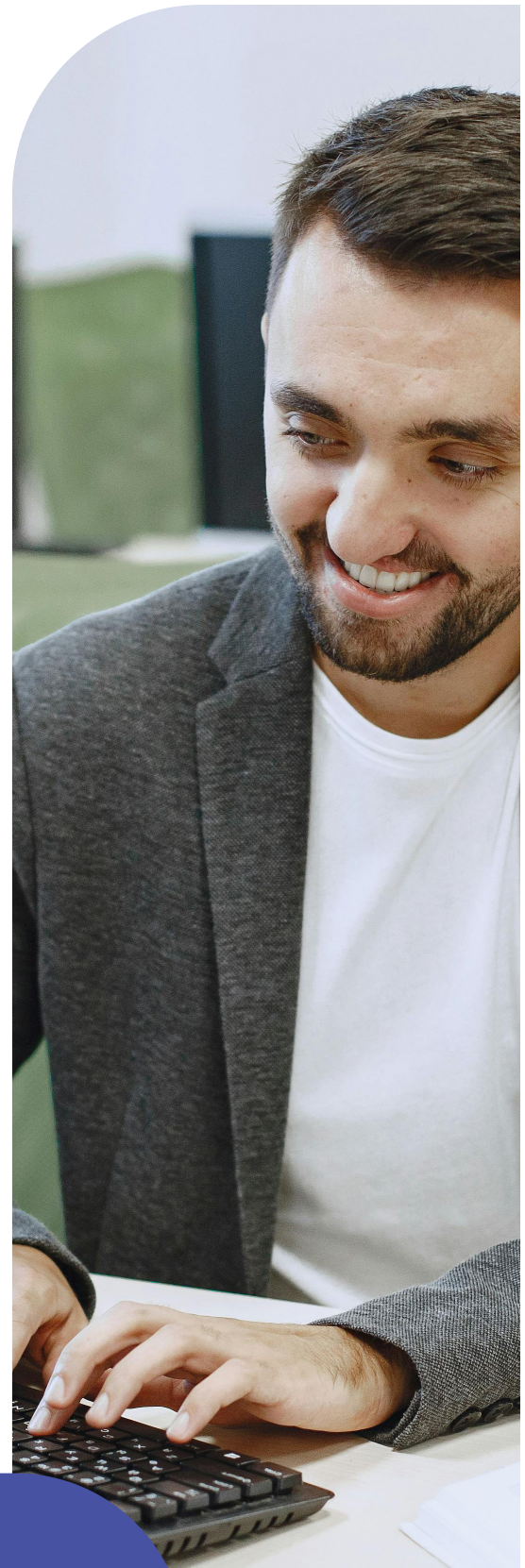
Our human-in-the-loop architecture actively enforces moment-by-moment integrity and NAIC AI Model Bulletin compliance. When ambiguous, the AI queues a response for human review, providing a transparent trail of decision-making.

INCONTROVERTIBLE MARKET VALIDATION

We approach the market with incontrovertible market validation: the successful creation, scaling, and sale of our fully digital MGA, Eventuguard, to Jeweler's Mutual Insurance. During its operation, our AI Associates successfully completed over 90% of policy sales transactions from quote to bind entirely without human intervention. This divestiture structurally de-risks our offering for institutional partners.

TECHNICAL VALIDATORS

- **Rapid Time-to-Value:** Production-ready in ~60 days.
- **Insurance-Native Architecture:** Understands binding authority and surplus lines out of the box.
- **API-First Integration:** Integrates with AMS/PAS (Guidewire, Vertafore) without breaking stacks.
- **No-Code Control:** Strategy Studio empowers operations teams to update rules without IT support.



Your Growth Partner in Insurance Distribution

indemn.ai

