

WORKFLOW EFFICIENCY

INBOX ASSOCIATE

Power Your Smart Inbox



THE HIDDEN COST OF INEFFICIENCY

Carrier adjusters and underwriters waste countless hours drafting repetitive emails regarding basic status updates or missing information. This administrative drudgery shrinks their capacity for complex decision-making and extends processing times.

YOUR DIGITAL WORKFORCE

The Inbox Associate: Equip your team with a Smart Inbox. Indemn replaces manual “efficiency tools” with a Growth Partner capability, reading intent, synthesizing data, and queuing up the work so your human experts can operate at peak velocity.

AGENTIC BUSINESS RESULTS (ABR) DELIVERED

- **Intelligent Drafting:** Automatically generates pre-drafted emails regarding claims status or complex underwriting questions.
- **Velocity Multiplier:** Allows adjusters and underwriters to significantly increase their correspondence velocity.
- **Elevated Focus:** Liberates carrier staff from administrative noise so they can focus strictly on judgment and risk assessment.



PROVEN ARCHITECTURE, ABSOLUTE CONTROL

COMPLIANCE BY DESIGN

The Human-in-the-loop Differentiator:

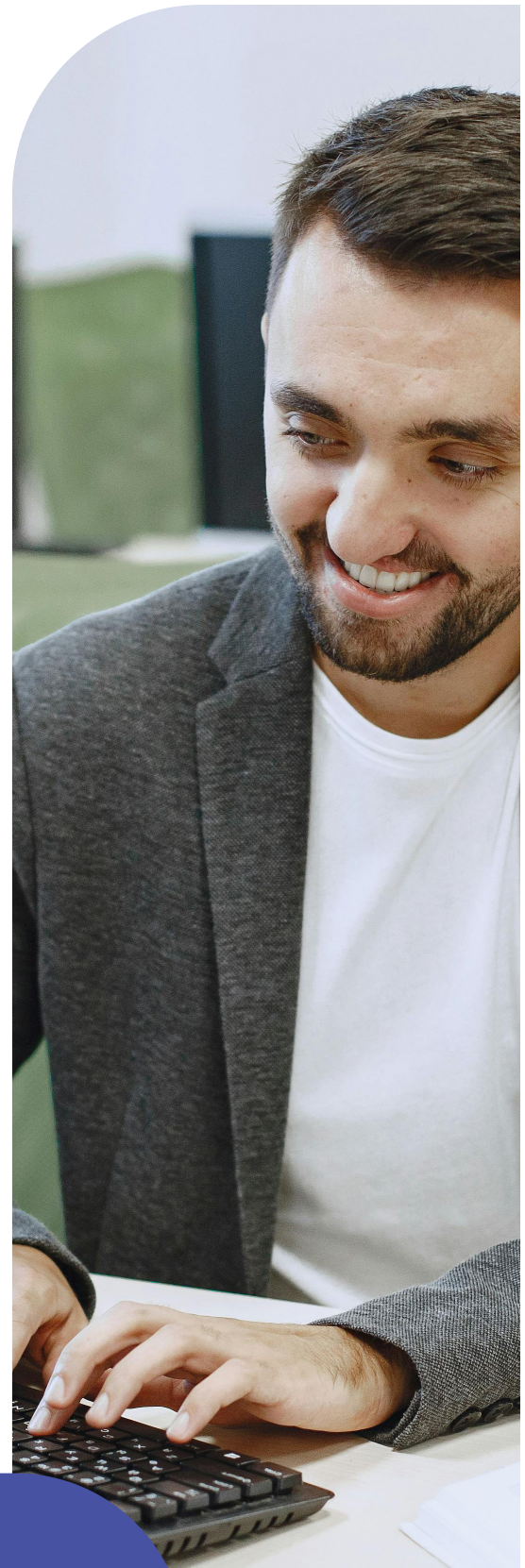
Our human-in-the-loop architecture actively enforces moment-by-moment integrity and NAIC AI Model Bulletin compliance. When ambiguous, the AI queues a response for human review, providing a transparent trail of decision-making.

INCONTROVERTIBLE MARKET VALIDATION

We approach the market with incontrovertible market validation: the successful creation, scaling, and sale of our fully digital MGA, Eventuguard, to Jeweler's Mutual Insurance. During its operation, our AI Associates successfully completed over 90% of policy sales transactions from quote to bind entirely without human intervention. This divestiture structurally de-risks our offering for institutional partners.

TECHNICAL VALIDATORS

- **Rapid Time-to-Value:** Production-ready in ~60 days.
- **Insurance-Native Architecture:** Understands binding authority and surplus lines out of the box.
- **API-First Integration:** Integrates with AMS/PAS (Guidewire, Vertafore) without breaking stacks.
- **No-Code Control:** Strategy Studio empowers operations teams to update rules without IT support.



Your Growth Partner in Insurance Distribution

indemn.ai

