

WORKFLOW EFFICIENCY

ONBOARDING ASSOCIATE

Accelerate Your Time-to-Sell



THE HIDDEN COST OF INEFFICIENCY

Knowledge traps in complex manuals and confusing agent portals slow down your distribution network. When agents are delayed by administrative bottlenecks during onboarding, you lose valuable time-to-market and revenue capacity.

YOUR DIGITAL WORKFORCE

The Onboarding Associate: Indemn provides an insurance-native digital workforce to act as your Growth Partner. By deploying the Onboarding Associate, you liberate your human staff from administrative drudgery and streamline the distributor experience.

AGENTIC BUSINESS RESULTS (ABR) DELIVERED

- **Intelligent Automation:** Executes automated agent intake with licenses verification and contracting form management.
- **Speed to Revenue:** Drastically reduces the time-to-sell from weeks to days.
- **Capacity Expansion:** Empowers your organization to grow revenue capacity without scaling headcount.



PROVEN ARCHITECTURE, ABSOLUTE CONTROL

COMPLIANCE BY DESIGN

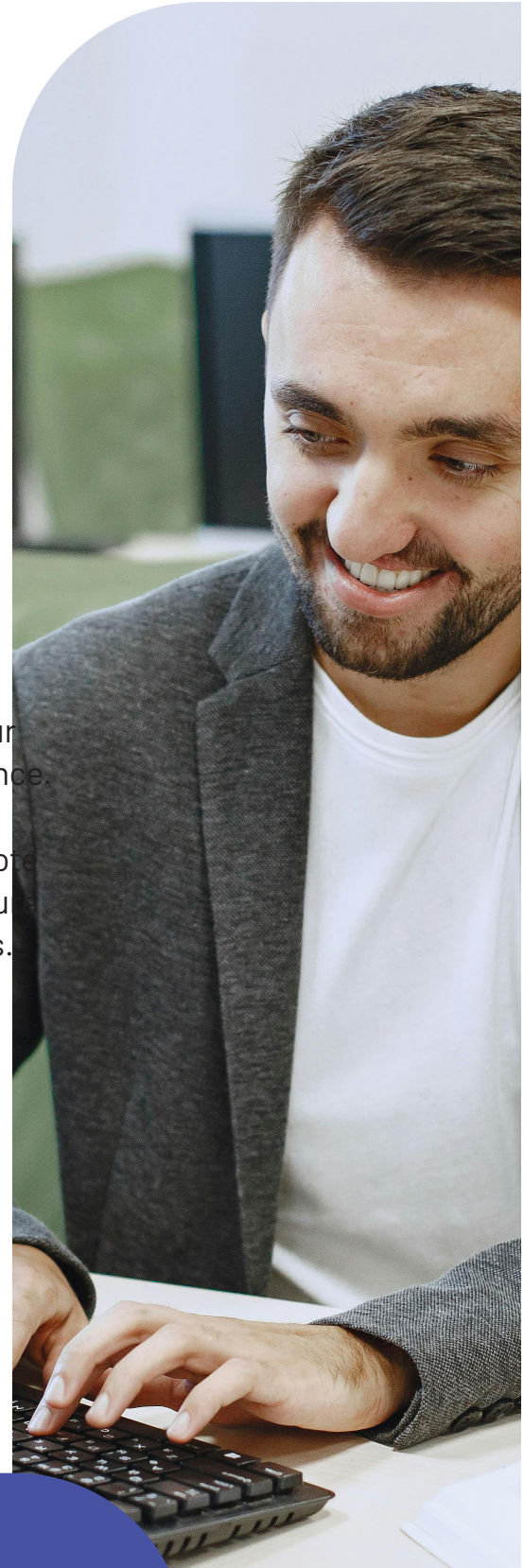
The Human-in-the-loop Differentiator: For carriers, we focus heavily on compliance-by-design. Our human-in-the-loop architecture actively enforces moment-by-moment integrity and NAIC AI Model Bulletin compliance. When ambiguous, the AI queues a response for human review, providing a transparent trail of decision-making.

INCONTROVERTIBLE MARKET VALIDATION

We approach the market with incontrovertible market validation: the successful creation, scaling, and sale of our fully digital MGA, Eventuguard, to Jeweler's Mutual Insurance. During its operation, our AI Associates successfully completed over 90% of policy sales transactions from quote to bind entirely without human intervention. This divestiture structurally de-risks our offering for institutional partners.

TECHNICAL VALIDATORS

- **Rapid Time-to-Value:** Production-ready in ~60 days.
- **Insurance-Native Architecture:** Understands binding authority and surplus lines out of the box.
- **API-First Integration:** Integrates with AMS/PAS (Guidewire, Vertafore) without breaking stacks.
- **No-Code Control:** Strategy Studio empowers operations teams to update rules without IT support.



Your Growth Partner in Insurance Distribution

indemn.ai

