

WORKFLOW EFFICIENCY

INTAKE ASSOCIATE FOR CLAIMS

Accelerate Claim Responses



THE HIDDEN COST OF INEFFICIENCY

Manual claim intake processes create bottlenecks during high-stress moments for policyholders and agents.

YOUR DIGITAL WORKFORCE

The Intake Associate for Claims: Indemn empowers your organization to scale capacity with outcome-driven AI Associates.

AGENTIC BUSINESS RESULTS (ABR) DELIVERED

- **FNOL Automation:** Delivers automated intake of First Notice of Loss.
- **High-Volume Resolution:** Liberates human staff from administrative drudgery and high-volume noise.



PROVEN ARCHITECTURE, ABSOLUTE CONTROL

COMPLIANCE BY DESIGN

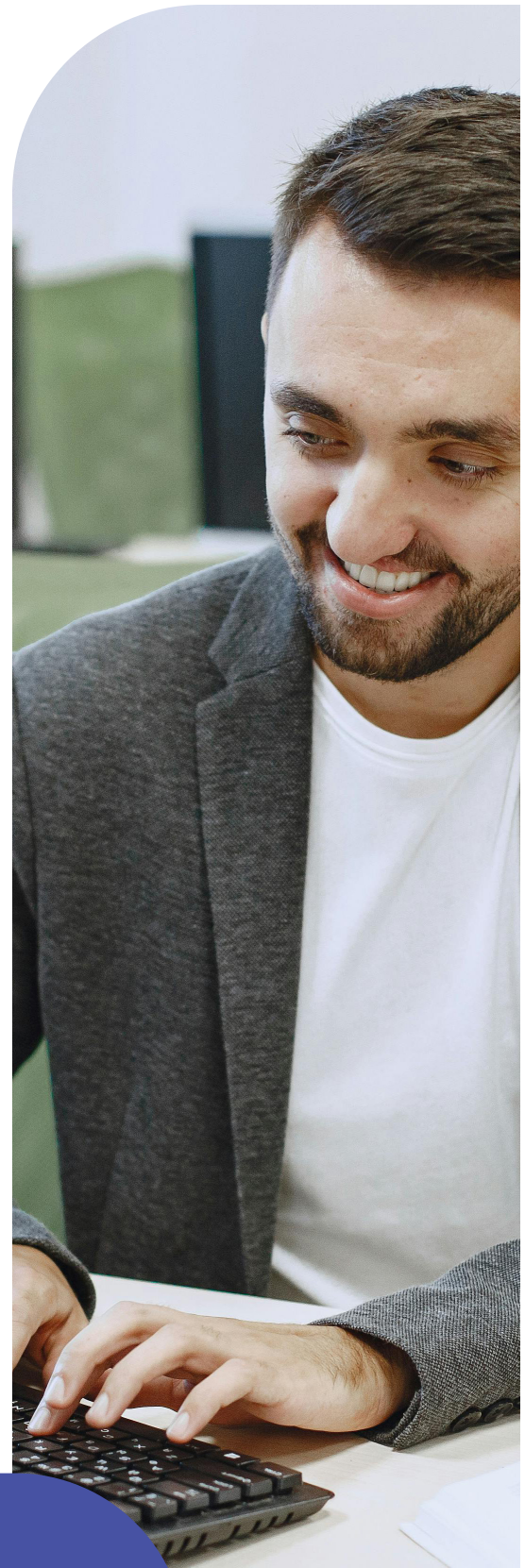
The Human-in-the-loop Differentiator: We treat AI as a collaborative tool. Our human-in-the-loop architecture actively enforces moment-by-moment integrity and NAIC AI Model Bulletin compliance. When ambiguous, the AI queues a response for human review, providing a transparent trail of decision-making.

INCONTROVERTIBLE MARKET VALIDATION

This divestiture of Eventuard structurally de-risks our offering for institutional partners, proving our AI Associates function reliably in highly regulated, live production environments.

TECHNICAL VALIDATORS

- **Compliance:** Our human-in-the-loop architecture actively enforces moment-by-moment integrity and NAIC AI Model Bulletin compliance. When ambiguous, the AI queues a response for human review.
- **Validation:** We approach the market with incontrovertible market validation: the successful creation, scaling, and sale of our fully digital MGA, Eventuard. AI Associates completed over 90% of transactions from quote to bind entirely without human intervention.
- **Technical Validators:** Production-ready in ~60 days. Insurance-Native Architecture understands binding authority. API-First Integration with AMS/PAS. Strategy Studio empowers no-code control.



Your Growth Partner in Insurance Distribution

indemn.ai

