



Advanced, Easy to Use and Cost Effective Clinical Water Treatment Technology

先进、易于使用、具有成本效益的临床水处理技术

Geavanceerde, gebruiksvriendelijke en kosteneffectieve klinische waterbehandelingstechnologie

Technologie avancée, économique et facile à utiliser pour le traitement de l'eau clinique

Technologie avancée, économique et facile à utiliser de traitement de l'eau clinique

Hoch entwickelte, einfach zu bedienende und kostengünstige Methode zur Wasseraufbereitung für den klinischen Bedarf

Tecnologia di trattamento clinico dell'acqua avanzata, semplice da usare ed economicamente vantaggiosa

進歩的、簡便、優れたコスト効率 臨床的水処理テクノロジー

Tecnologia clínica avançada, fácil de usar e ótimo custo-benefício de tratamento de água

Совершенная, удобная и экономичная технология клинической обработки воды

Tecnología de tratamiento clínico de agua avanzada, fácil de usar y rentable

INSTRUCTIONS FOR USE

DentaPure Microbiological Water Purification System

使用说明

DentaPure 微生物浄水システム

GEBRUIKSAANWIJZING

DentaPure microbiologisch waterzuiveringsysteem

MODE D'EMPLOI

Système de purification d'eau microbiologique DentaPure

MODE D'EMPLOI

Système de purification d'eau microbiologique DentaPure

GEBRAUCHSANWEISUNG

DentaPure mikrobiologisches Wasseraufbereitungssystem

ISTRUZIONI PER L'USO

Sistema di purificazione microbiologica dell'acqua DentaPure

使用説明書

DentaPure 微生物学的浄水システム

INSTRUÇÕES DE USO

Sistema microbiológico de purificação de água DentaPure

ИНСТРУКЦИЯ ПО ЭКСПЛУАТАЦИИ

Микробиологическая система очистки воды DentaPure

INSTRUCCIONES DE USO


Sistema de purificación microbiológica de agua DentaPure



CROSSTEX[®]
A CANTEL MEDICAL COMPANY

Precautionary Statements,Warnings, First Aid, and Product Information

PRECAUTIONARY STATEMENTS

 **CAUTION:** Avoid direct contact with eyes, skin and clothing. Wear protective eyewear (goggles) and gloves when handling. Wash thoroughly with soap and water after handling and before eating, drinking, chewing gum, or using tobacco. Remove and wash contaminated clothing before reuse. Safety and effectiveness in children under the age of two has not been established. Do not expose resin pellets to the environment.

FIRST AID:

IF IN EYES: Hold eye open and rinse slowly and gently with water for 15-20 minutes. Remove contact lenses, if present after the first 5 minutes, then continue rinsing eye. Call poison control center or doctor for treatment advice.

IF ON SKIN/CLOTHING: Take off contaminated clothing. Rinse skin immediately with plenty of water for 15-20 minutes.

IF SWALLOWED: Call poison control center or doctor immediately for treatment advice. Have person sip a glass of water if able to swallow. Do not induce vomiting unless told to do so by the poison control center or doctor. Do not give anything by mouth to an unconscious person. Have product container or label with you when calling a poison control center or doctor, or going for treatment.

USE CAUTION: IN THE EVENT THE CYLINDER OR CARTRIDGE IS DAMAGED AND THE IODINATED RESIN PELLETS ARE EXPOSED.



NOTE: USED, UNDAMAGED CARTRIDGES AND CYLINDERS ARE NOT CONSIDERED HAZARDOUS AND MAY BE WRAPPED IN NEWSPAPER AND DISPOSED OF IN THE REGULAR TRASH.

DO NOT USE THIS PRODUCT IN ANY MANNER INCONSISTENT WITH ITS LABELING.

Active Ingredient:

Iodine*	46%
Other Ingredients	54%
TOTAL	100%

Unit	DPI365M	DPI365B	DPI40B
Iodinated Resin	38 cc	16 cc	4 cc

**Bonded to strong base anion exchange resin*

USES: DENTAPURE cartridge is for use on dental unit waterlines attached to the dynamic dental instruments. Used according to labeling, this cartridge reduces bacteria from the water supplied through the instruments to a level that will meet or exceed the current ADA recommendations for water quality having a maximum of 200 cfu/ml.

IMPORTANT: Use DENTAPURE cartridge on dental unit waterlines only, not for general consumption. While the unit will perform above these limits, it is recommended that the dental unit water have a pH level of less than 8 and not have a chlorine level greater than 1 ppm. Do not use heated water. Heated water will promote the growth of bacteria and the buildup of biological film in the water line leading to the DENTAPURE unit. Water pressure should not exceed 45 psi.

Receipt of Product and Installation

Upon receipt, if package seal is broken or cartridge appears dry, wrap the cartridge in newspaper and dispose of it in the trash.



INSTRUCTIONS FOR USE:

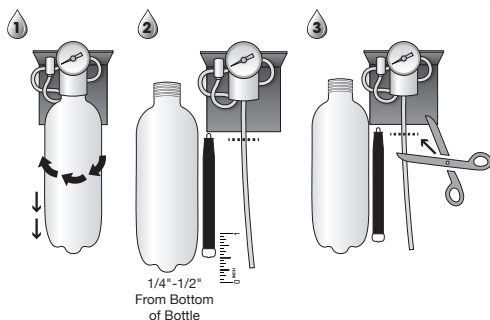
DENTAPURE® DPI40B & DPI365B

TOOLS AND MATERIALS REQUIRED:

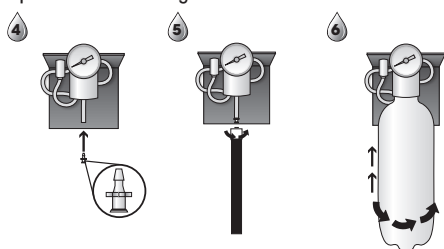
- DentaPure cartridge
- Luer lock from Installation Kit
- Scissors or sharp knife

To obtain maximum bacteriological reduction, dental unit waterlines should be cleaned with an approved dental unit waterline agent prior to initial installation.

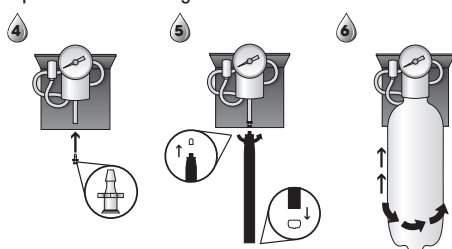
Installation steps 1-3 are the same for both the DPI40B & DPI365B.



Steps 4-6 for Installing the DPI40B



Steps 4-6 for Installing the DPI365B



- Check air pressure to bottle, set at 45 psi.
- Operate dental unit instruments until all air is purged from the water system.

INSTRUCTIONS FOR USE:

DENTAPURE® DPI365M

TOOLS AND MATERIALS REQUIRED:

- Installation Kit—Includes attachment bracket(s), 2 polyflo fittings, 1 union
- Scissors or sharp knife
- Teflon plumber's tape
- Adjustable wrench

1. Locate and turn off water supply. Identify placement of DPI365M in or near junction box, immediately after the water pressure regulator, making sure that there is enough space for the cartridge without kinking the tubing.
2. Set water regulator pressure to 45 psi.
3. Remove the blue shipping plugs from the ends of the cartridge. Wrap Teflon tape around the fitting threads and install the included 1/4" (0.635cm) or 5/8" (1.59 cm) polyflo fittings (determined by the size of your water line) on each end of the DENTAPURE cartridge.
4. Position the DentaPure cartridge immediately after the water pressure regulator so that the maximum amount of waterline is treated. (Please note that DentaPure should not be treating the cuspidor/cup filler, this may require a bypass splice). Cut the water tube using scissors or a knife.

5. Unscrew the brass retainer portion of the polyflow fitting on the cartridge side closest to the junction. Slide the tubing through the retainer and slip the tubing onto the fitting on the cartridge. Tighten the retainer to the fitting.

Note: if tubing has fabric covering, make sure the fabric is captive within the plastic retainer. Make sure the tubing will not kink after it is fitted to the DENTAPURE cartridge.

6. Hold cartridge vertically, place a towel on the end of the cartridge. Turn on water, and let it flow to purge all air.
7. Repeat step 5 on the opposite side of the cartridge.
8. Install the holding bracket(s) if desired. Place cartridge in bracket(s).
9. Operate dental instrument(s) to check water flow and purge air and carbon filter residues from the lines.

To install the bypass splice (to be used where iodinated water is not desired; ie: cuspidor cup configuration): turn water supply off and depressurize the water system by operating the syringe. Install a "T" fitting before the cartridge.

If treatment of the line is desired, turn off the water source. Remove the DENTAPURE cartridge by unscrewing the nut retainers. Reinstall on the splice fitting. Turn on water and purge the water system

free of air using the syringe and hand piece. When treatment is completed, reinstall the DENTAPURE cartridge.

NOTE: If the unit has a cuspidor and cup filler, bypass these using a “T” fitting on the supply line before the water bottle.

Studies show that water heaters can be a source of increased biological contamination. For optimal biological purity DENTAPURE recommends not using water heaters.

Product Use, Replacement, Storage, Disposal and Troubleshooting

Once the cartridge is in place, the supply water will pass through the cartridge’s iodinated resin bed, purifying the water delivered by the dental instrument. To maintain a continuous iodine presence within the dental tubing, install a new cartridge immediately after removing the used cartridge. The cartridge must be left in place during times that the dental unit is not used (weekends, vacations, etc).

Adherence to CDC/ADA guidelines for aseptic procedures including a 2 minute morning flush, a 20-30 second flush between patients, and hand piece sterilization must be continued after the installation of the cartridge.

The bottle in water bottle systems must be emptied each night and set upside down to dry. If desired, wipe down the outside of the cartridge with a clean paper

towel. Fill with fresh water each morning before its first use.

Please see chart below for suggested use based upon cartridge.

REPLACEMENT: Use Iodine sensitive test strips to verify performance. If the level of iodine output falls to less than 0.5 ppm change cartridge. See the chart below for suggested change intervals. To change cartridge, follow installation instructions. Remove the used cartridge and install the new DENTAPURE cartridge. Operate the dental instrument to check flow and verify that the unit is ready for use. Install a new water check-off sheet. Dispose of the old cartridge according to disposal instructions. Shut off water to dental unit when not in use.

Suggested Use Table

DENTAPURE Unit Size	If Water Usage Records Kept	If Water Usage Records NOT Kept	If Iodine Content is Monitored
DPI40B	40 Liters	60 Calendar Days	Change when iodine output falls to less than 0.5 ppm
DPI365M & DPI365B	240 Liters	365 Calendar Days	

STORAGE: Store at room temperature in original packaging, away from children, pets and direct sunlight. Avoid excessive heat. Do not allow cartridge to freeze. Do not store in open or unlabeled containers.



DISPOSAL: Securely wrap cartridge in newspaper and discard in trash.

TROUBLESHOOTING:

Slow or no water flows through cartridge: Make sure new cartridge was installed properly. Make sure air supply is turned on (maximum 45 psi). Make sure cartridge is off the bottom of the bottle.

Air leak from fitting: Please contact your dental dealer

for replacement parts.

Discoloration of the tubing: May change from blue to green or black. This is normal and is not a concern.

Initial dark discoloration of water: This is caused by release of activated carbon. Operate water until flow appears clear.

QUESTIONS OR COMMENTS? Visit our website at www.DentaPure.com, email: crosstex@crosstex.com or call us at 1-631-582-6777.

DENTAPURE is a trademark of Crosstex International.

