



excalibur[®]

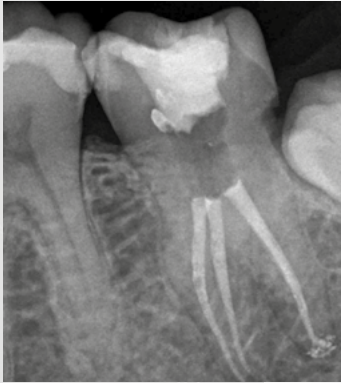
**The reciprocating file that
will conquer the world**

Featuring a state-of-the-art
gold alloy treatment



FROM ODONTOLOGISTS
TO ODONTOLOGISTS

Technology tested by top professionals



José Aranguren

These are reciprocating files that offer the lowest taper, flexibility and cutting capacity in a single instrument. They are amazing.



Arman Gazi

These files complete the wide range of Zarc products. It goes without pressure and softly follows the canal.



José Conde

Speed, safety, conservation and flexibility come together in a single system: Excalibur®.



FROM ODONTOLOGISTS
TO ODONTOLOGISTS

A FILE FOR ALL TYPES OF CANALS

	MFD	TAPER	Ø
SMALL	0,95	5%	0,20
REGULAR	1,00	5%	0,25
MEDIUM	1,08	5%	0,35
LARGE	1,15	5%	0,45

excalibur®

The Excalibur® family is made up of 4 instruments so specialists can choose the one that best suits their clinical needs:

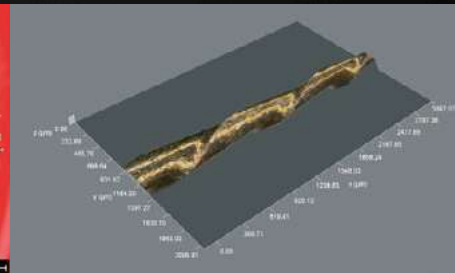
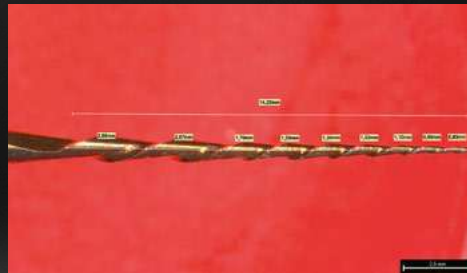
20/05, 25/05, 35/05 and 45/05



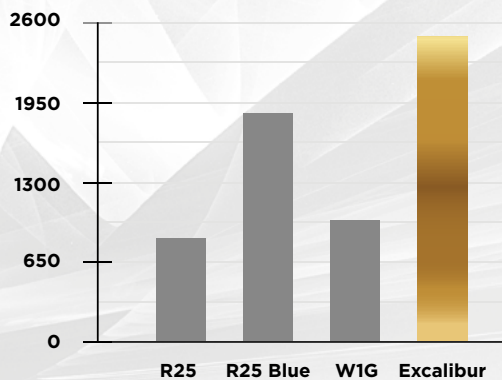
Lower MFD

The reciprocating file with the lowest taper

With just a **5% taper**, Excalibur® is the first conservative single-file reciprocating system. It is capable of removing less dentin than its competitors, ensuring **greater preservation of the original anatomy**.



SUPERB SIMPLICITY LEADING TO ENDODONTIC EXCELLENCE



NCF (Number of cycles to fracture)

*Data on file (Rey Juan Carlos University, Madrid, Spain)
R25, R25Blue and WIG are not registered trademarks of Zarc4Endo

excalibur®

Greater resistance to cyclic fatigue

Excalibur® offers **32%* higher** cyclic fatigue resistance than any other system on the market. It is by far **the most resistant** ever tested.

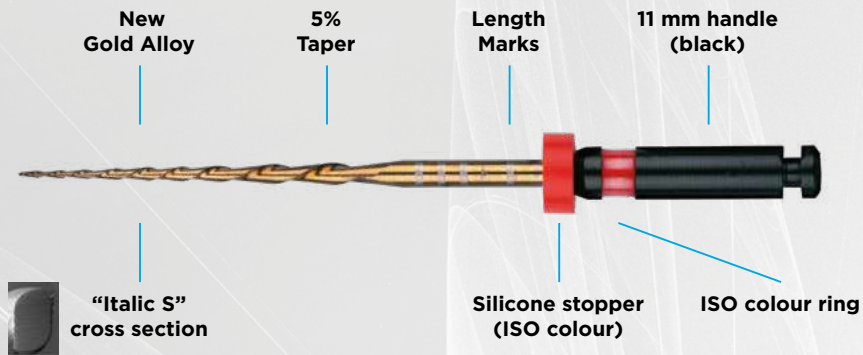


excalibur®

Technical characteristics of Excalibur®

400-500 RPM

150° anticlockwise rotation/30° clockwise rotation



- Excalibur®, which features a state-of-the-art **gold alloy**, is characterized by its **extraordinary flexibility and absence of shape memory**.
- It is the fastest, simplest, most resistant, effective and versatile system ever invented. It has the **best cutting performance** on the market.
- A single-file system **capable of doing it all**, and doing it well.
- The **most conservative and safest** reciprocating system.*

*Data on file

System Reference Codes

Excalibur® 21 mm

ZRE2102005 E20 21 mm (6 units) sterile
ZRE2102505 E25 21 mm (6 units) sterile
ZRE2103505 E35 21 mm (6 units) sterile
ZRE2104505 E45 21 mm (6 units) sterile
ZRE21ASST1 E20-E45 21 mm (4 units) sterile

Excalibur® 25 mm

ZRE2502005 E20 25 mm (6 units) sterile
ZRE2502505 E25 25 mm (6 units) sterile
ZRE2503505 E35 25 mm (6 units) sterile
ZRE2504505 E45 25 mm (6 units) sterile
ZRE25ASST1 E20-E45 25 mm (4 units) sterile

Excalibur® 31 mm

ZRE3102005 E20 31 mm (6 units) sterile
ZRE3102505 E25 31 mm (6 units) sterile
ZRE3103505 E35 31 mm (6 units) sterile
ZRE3104505 E45 31 mm (6 units) sterile
ZRE31ASST1 E20-E45 31 mm (4 units) sterile

Excalibur® Gutta-percha

ZREGP00E20 Gutta-percha E20 (60 units)
ZREGP00E25 Gutta-percha E25 (60 units)
ZREGP00E35 Gutta-percha E35 (60 units)
ZREGP00E45 Gutta-percha E45 (60 units)

Excalibur® Paper Points

ZREPP00E20 Paper Points E20 (100 units)
ZREPP00E25 Paper Points E25 (100 units)
ZREPP00E35 Paper Points E35 (100 units)
ZREPP00E45 Paper Points E45 (100 units)



hola@zarc4endo.com
www.zarc4endo.com



ZARC