

RVG TECHNOLOGY THAT SETS THE STAGE FOR DIAGNOSTIC EXCELLENCE

Proven RVG technology. Established reliability.

Since every diagnosis starts with an image, your sensor has an important role to play in your practice. It needs to produce high-quality images that enable you to diagnose with confidence. It should simplify image acquisition and not complicate your workflow. Your sensor has to be comfortable so your patients can tolerate the imaging experience in the first place.

The RVG 5200 is the simple, yet affordable, sensor that you can rely on to meet these expectations and provide high diagnostic capabilities and workflow efficiencies. Plus, it integrates with most imaging and dental practice management software to streamline the way you practice.

Position. Expose. View.

Because it's designed without a control box, the workflow for the RVG 5200 is as simple as position, expose, and view. There's no need to arm the sensor or open the image acquisition interface to capture an image. The RVG 5200 is always ready to acquire images when you are.



Maximum
durability



High image
quality



Convenient
quickstart

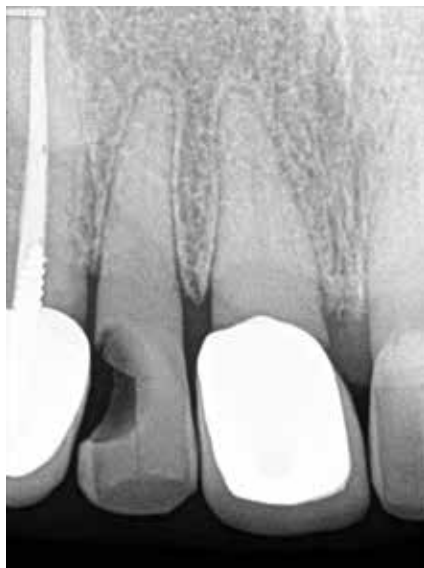


Air- and
watertight

RVG 5200: A GREAT FIRST STEP INTO DIGITAL

There's no sacrifice between image quality and affordability. You can optimize your images effortlessly with three pre-programmed enhancement filters: perio-, endo- and dentin-enamel junction. And the system's easy-to-use sharpness slider bar allows you to customize image appearance according to your needs.

- AFFORDABLE QUALITY**
Enjoy images of the same or higher quality than those produced by other sensors on the market.
- CUSTOMIZABLE IMAGES**
Optimize image contrast according to your diagnostic needs, thanks to pre-programmed enhancement filters.
- SIMPLE, COMFORTABLE POSITIONING**
Ensure proper placement and patient comfort thanks to included positioners and a thinner cable.
- FAST, EASY INSTALLATION**
Use your RVG 5200 immediately with a streamlined installation and verification process.
- LASTING RELIABILITY**
Count on Carestream Dental's decades of experience plus a durable, waterproof design for performance you can count on.
- STREAMLINED WORKFLOW**
Take the complexity out of your workflow when all you have to do is: position, expose and view.



RVG 5200

© Carestream Health, Inc. 2017. 15515 DE RVG 5200 SS 0417
RVG is a trademark of Carestream Health.